

31.12.2013

Kesselwagenset Zans



KesselwagenZans_Ermewa



KesselwagenZans_GATX1



KesselwagenZans_GATX2



KesselwagenZans_VTG



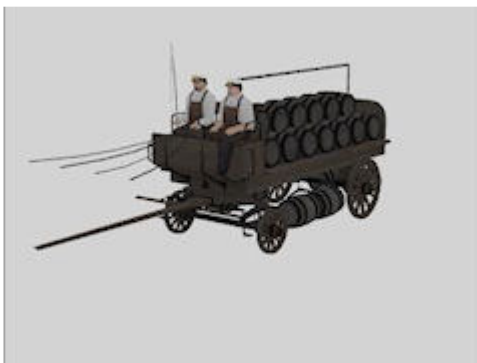
KesselwagenZans_Wascosa

Vora-Shop
Trend-Shop

UG200001.zip
V60NUG20001.zip

31.12.2013

Bierwagen von Bitburger und Hacker-Pschorr (Silvester bei FKG)



Bierwagen-Faesser_BIT-HP_Str_BH1



Bierwagen-leer-BIT-HP_IM_BH1

Bierwagen-Faesser-BIT-HP_IM_BH1

BH 1

BH1_Bierwagen_Bitburger_Hacker-Pschorr.rar

24.12.2013

Herbstliche Hintergründe



Herbst1



Herbst2



Herbst3



Herbst4



Herbst5



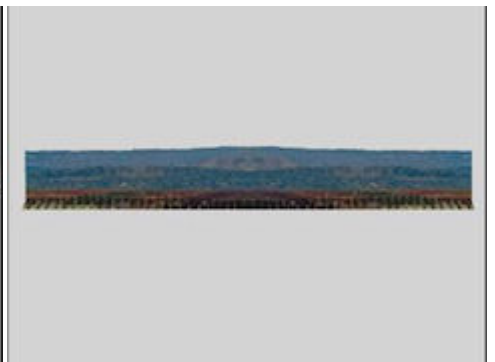
Herbst6



Herbst7



Herbst8



Herbst9



Herbst10



Herbst11



Herbst12

28.12.2013

Fahrgeschaefr Riesenrad Jupiter



Jupiter Riesenrad

Vora-Shop

HB200133.zip

28.12.2013

Duisburger Haeuser PW1



Reihenhaus_1_DU_pw1



Reihenhaus_3_DU_pw1



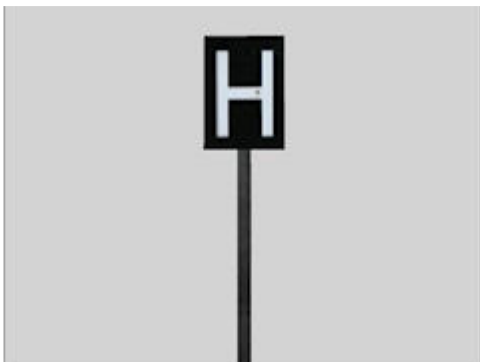
zum_altem_Steiger_DU_pw1

Vora-Shop

PW100052.zip

28.12.2013

Harz-H-Tafel-Signal



TDR_Harz_H_Tafel

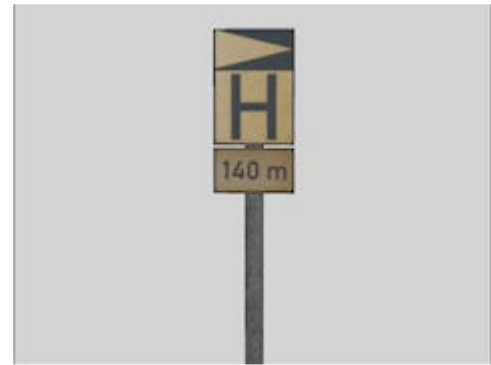
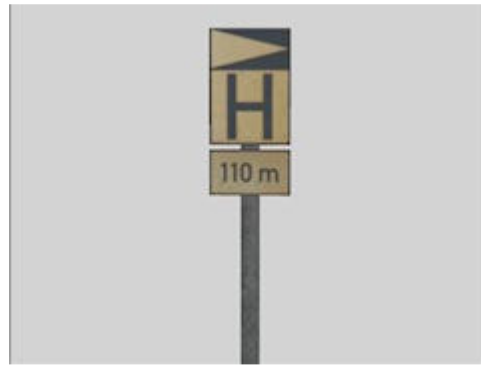
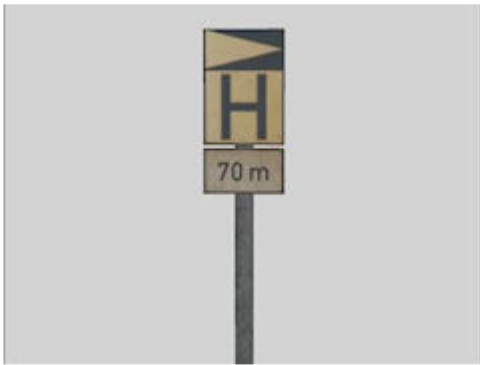
TDR_Harz_H_Tafel_ (unsichtbar)

DS 3

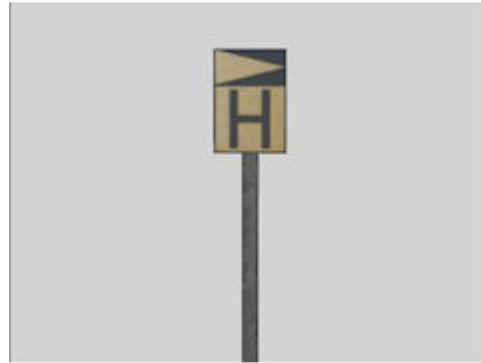
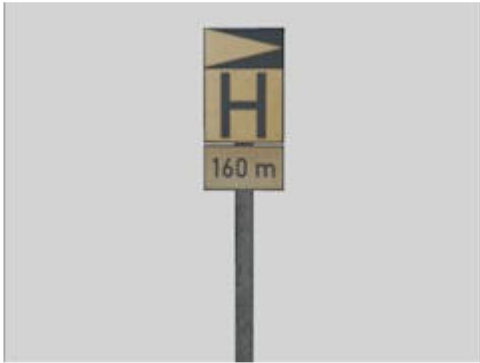
Harz_H_Tafel-Signal.rar

28.12.2013

Haltetafeln Links



TDR_NE5_Haltetafel_70_Verblichen TDR_NE5_Haltetafel_110_Verblichen TDR_NE5_Haltetafel_140_Verblichen



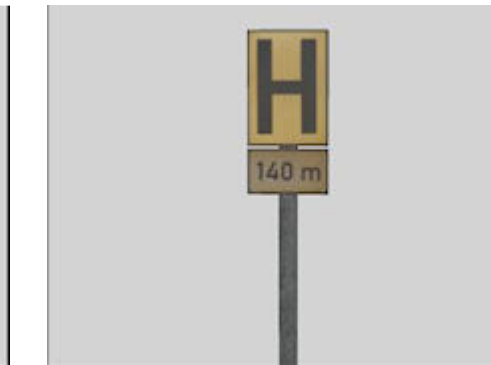
TDR_NE5_Haltetafel_160_Verblichen TDR_NE5_Haltetafel_Ausgebleicht TDR_NE5_Haltetafel_Verblichen_links

DS 3

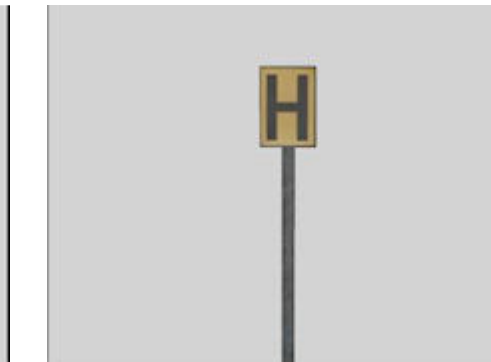
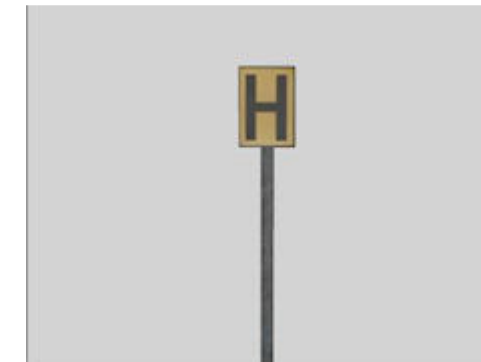
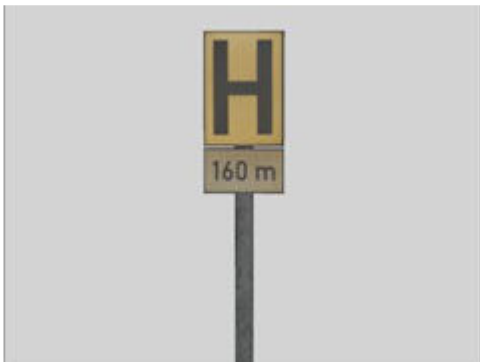
TDR_NE5_Haltetafeln_links.rar

28.12.2013

Haltetafeln Rechts



TDR_NE5_Haltetafel_70_Verblichen2 TDR_NE5_Haltetafel_110_Verblichen2 TDR_NE5_Haltetafel_140_Verbliche



TDR_NE5_Haltetafel_160_Verblichen2 TDR_NE5_Haltetafel_Verblichen TDR_NE5_Haltetafel_Verblichen2

DS 3

TDR_NE5_Haltetafeln_rechts.rar



Baumstaemme_2



Baumstaemme_3



Baumstaemme_4



Baumstamm



Heide2



Heide3



Heide4



Heide5



Heide6



Wacholder6



Wacholder7

24.12.2013

MB-L311_Viehtransporter BH1 (Weihnachten bei FKG)



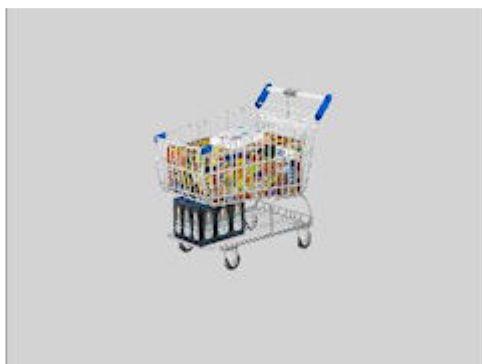
MB-L311_Viehtransporter_BH1
MB-L311_Viehtransporter_IM_BH1

BH 1

BH1_MB-L311_Viehtransporter.rar

24.12.2013

Einkauf Set BH1/HB2 (Weihnachten bei FKG)



Einkaufswagen_blaue_beladen_FW_HB2 Einkaufswagen_blaue_leer_FW_HB2 Frau_schieb_1_BH1
Einkaufswagen_blaue_beladen_Str_HB2 Einkaufswagen_blaue_leer_Str_HB2 Frau_schieb_1_Str_BH1



Frau_schieb_2_BH1
Frau_schieb_2_Str_BH1

Mann_schieb_1_BH1
Mann_schieb_1_Str_BH1

Mann_schieb_2_BH1
Mann_schieb_2_Str_BH1

BH 1

HB 2

Einkauf-Set_BH1-HB2.zip

24.12.2013

Schwedische Elektrolokomotive der Baureihe 185 von Railpool, vermietet an Skandinaviska Jernbanor



Railpool_S_SJ_185-707-
EpVI_DB1_SK2

DB 1

Weihnachten-Free-DB1.rar

24.12.2013

Württembergische Telegrafmasten



Telegrafenleitung_18-25_HB4

Telegrafenleitung_24-25_HB4

Telegrafenleitung_30-25_HB4

Telegrafenleitung_18-35-L-15_HB4

Telegrafenleitung_24-35-L-15_HB4

Telegrafenleitung_30-35-L-15_HB4

Telegrafenleitung_18-35-L-30_HB4

Telegrafenleitung_24-35-L-30_HB4

Telegrafenleitung_30-35-L-30_HB4

Telegrafenleitung_18-35-LR-
15_HB4

Telegrafenleitung_24-35-LR-
15_HB4

Telegrafenleitung_30-35-LR-
15_HB4

Telegrafenleitung_18-35-LR-
30_HB4

Telegrafenleitung_24-35-LR-
30_HB4

Telegrafenleitung_30-35-LR-
30_HB4

Telegrafenleitung_18-35-R-15_HB4

Telegrafenleitung_24-35-R-15_HB4

Telegrafenleitung_30-35-R-15_HB4

Telegrafenleitung_18-35-R-30_HB4

Telegrafenleitung_24-35-R-30_HB4

Telegrafenleitung_30-35-R-30_HB4

Telegrafenleitung_18-35-RL-
15_HB4

Telegrafenleitung_24-35-RL-
15_HB4

Telegrafenleitung_30-35-RL-
15_HB4

Telegrafenleitung_18-35-RL-
30_HB4

Telegrafenleitung_24-35-RL-
30_HB4

Telegrafenleitung_30-35-RL-
30_HB4

Telegrafenleitung_18-50_HB4

Telegrafenleitung_24-50_HB4

Telegrafenleitung_30-50_HB4

Telegrafenleitung_18-75_HB4

Telegrafenleitung_24-75_HB4

Telegrafenleitung_30-75_HB4



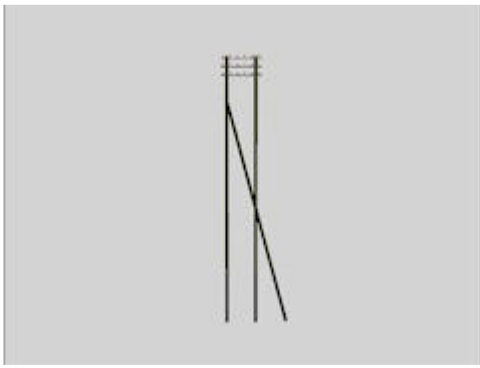
Telegrafenmast_18-01_HB4



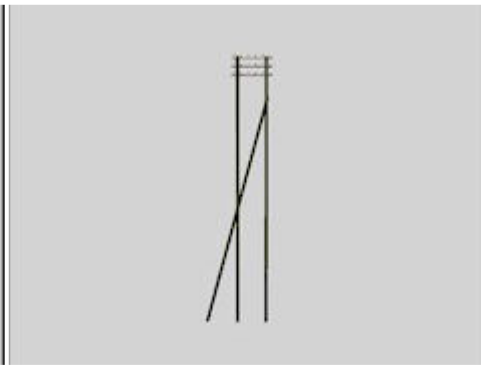
Telegrafenmast_18-02_HB4



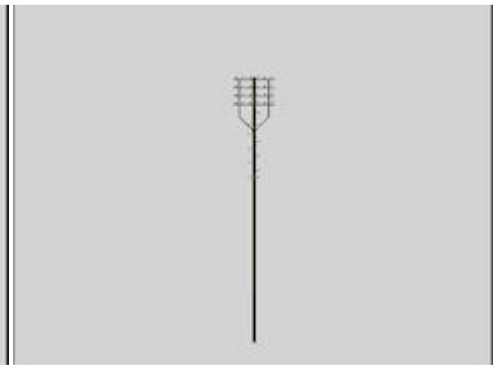
Telegrafenmast_18-03_HB4



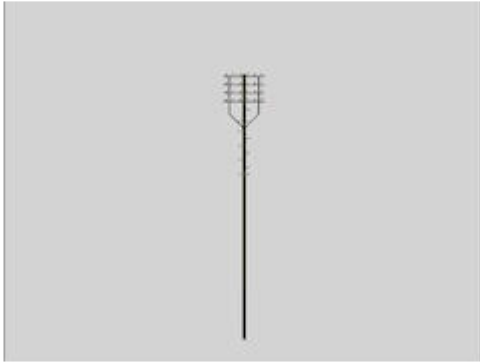
Telegrafenmast_18-04_HB4



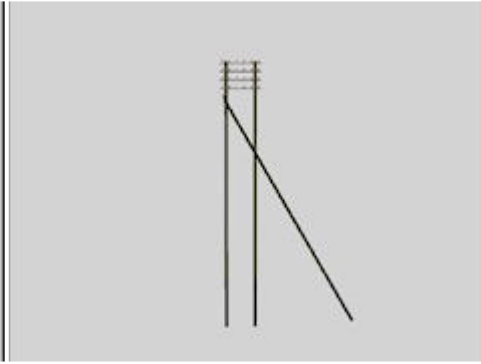
Telegrafenmast_18-05_HB4



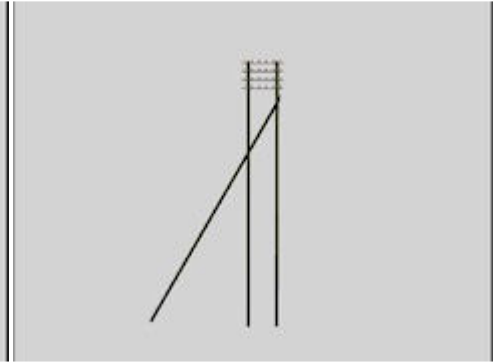
Telegrafenmast_24-01_HB4



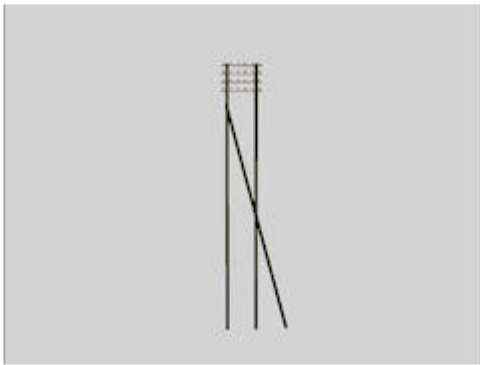
Telegrafenmast_24-01_HB4



Telegrafenmast_24-02_HB4



Telegrafenmast_24-03_HB4



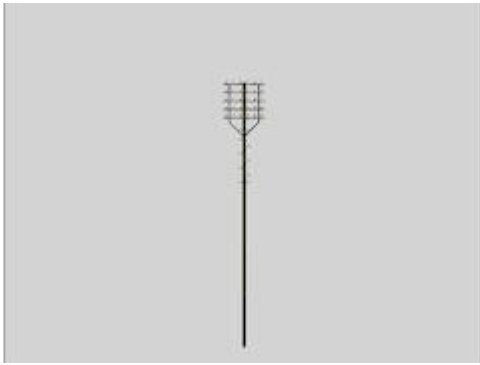
Telegrafenmast_24-04_HB4



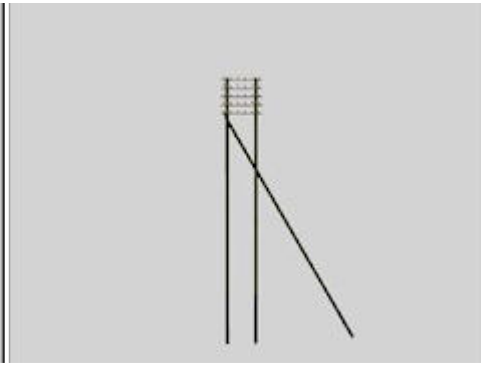
Telegrafenmast_24-05_HB4



Telegrafenmast_30-01_HB4



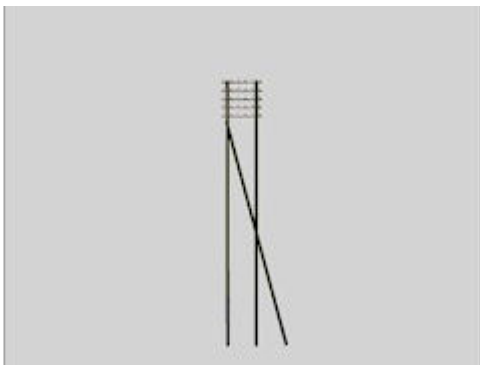
Telegrafenmast_30-01_HB4



Telegrafenmast_30-02_HB4



Telegrafenmast_30-03_HB4



Telegrafenmast_30-04_HB4



Telegrafenmast_30-05_HB4

24.12.2013

Wasserturm Bischofrode Winter



WT_Bischofrode_Wi

DK 1

DK1129.exe

24.12.2013

KPEV-C3i_pr91-Berlin_833_HB4 (Weihnachten bei FKG)



KPEV-C3i_pr91-Berlin_833_HB4

HB 4

KPEV-C3i_pr91-Berlin_833_HB4.zip

24.12.2013

Verkehrszeichen



Baustelle_EP5



Baustelle_EP5-solo



Bodenwelle



Bodenwelle-solo



Bremsschwelle



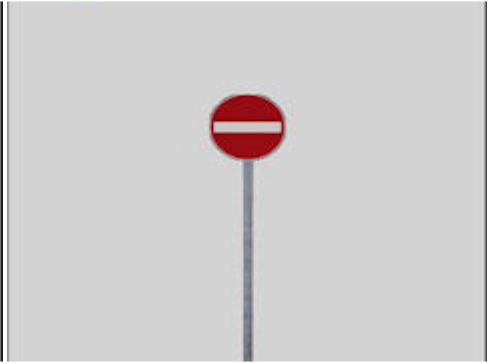
Bremsschwelle-solo



Einbahn_links_EP5



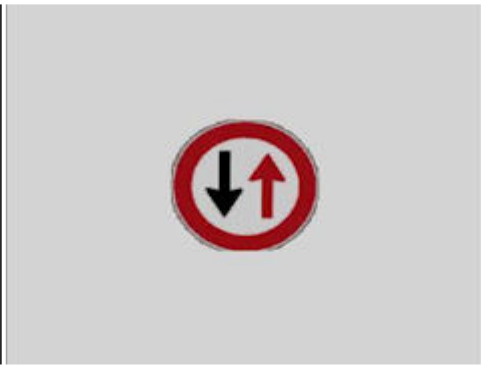
Einbahn_rechts_EP5



Einfahrtverbot



Gegenverkehr-Vorrang



Gegenverkehr-Vorrang-solo



Gehweg_EP5



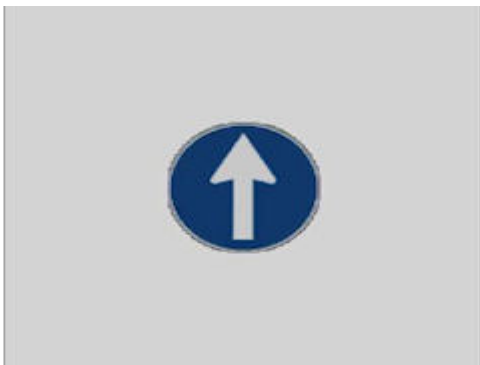
Geradeaus



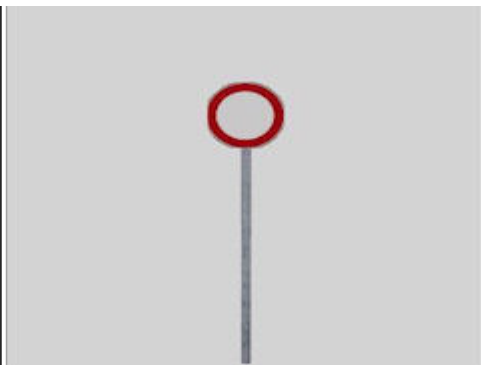
Geradeaus-links_EP5



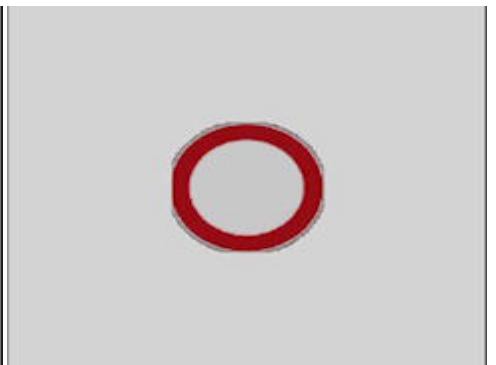
Geradeaus-rechts_EP5



Geradeaus-solo



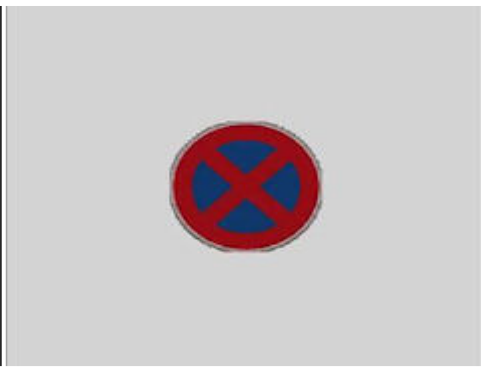
Gesperrt_EP5



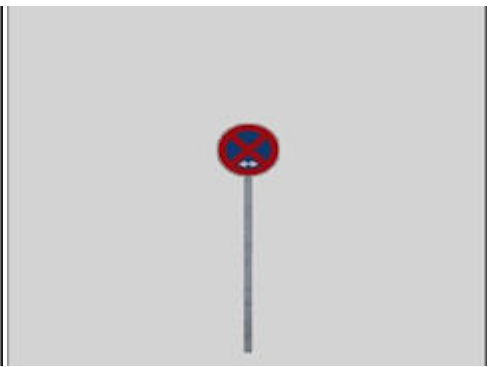
Gesperrt_EP5-solo



Halteverbot_EP5



Halteverbot_EP5-solo



Halteverbot-ff



Halteverbot-ff-solo



Kurve_links_EP5



Kurve_links_EP5-solo



Kurve_rechts_EP5



Kurve_rechts_EP5-solo



Links



Linksab



Links-vorbei



Links-vorbei-solo



Parken_Seite



Parken_Seite_half



Park-n-Ride



Parkplatz_EP5



Parkverbot_Anf



Parkverbot_Anf-solo



Parkverbot_Ende



Parkverbot_Ende-solo



Parkverbot_EP5



Parkverbot_EP5-solo



Rechtab



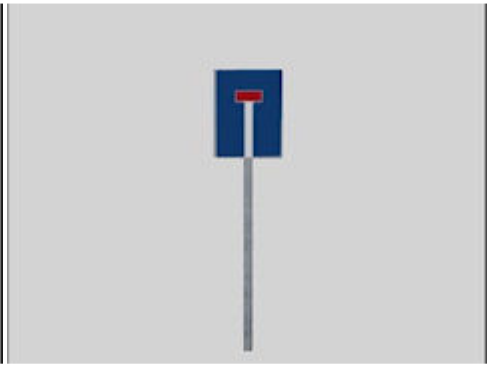
Rechts



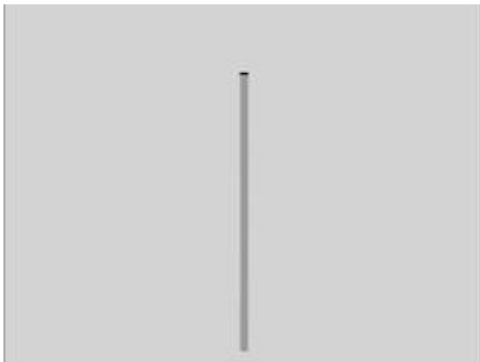
Rechts-vorbei



Rechts-vorbei-solo



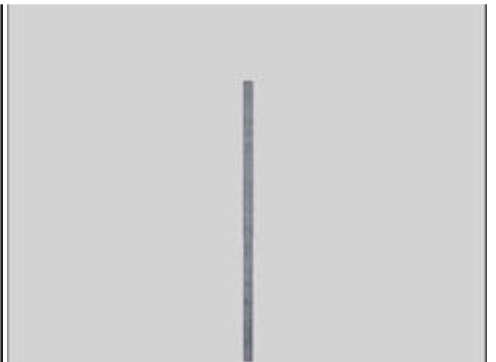
Sackgasse_EP5



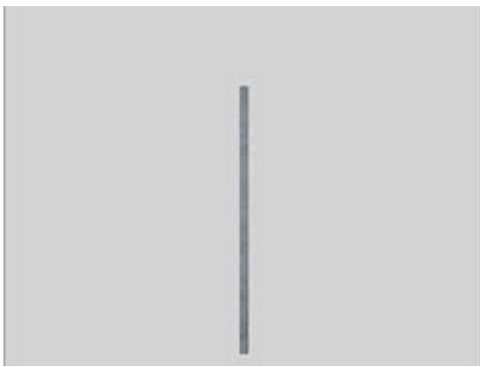
Schilderstange-90



Schilderstange-130



Schilderstange-260



Schilderstange-280



S-Kurve-links



S-Kurve-links-solo



S-Kurve-rechts



S-Kurve-rechts-solo



Stopp_EP5



Taxistand



Ueberholverbot_EP5



Ueberholverbot_EP5-solo



Ueberweg_links



Ueberweg_rechts



Viehtrieb_EP5



Viehtrieb_EP5-solo



Vorfahrt_achten



Vorfahrt_EP5



Vorfahrt_EP5-solo



Vorfahrt_hier



Vorrang_EP5



Wandern-links



Wandern-rechts



Wanderparkplatz



Wasserschutzgebiet



Wendeverbot



Wendeverbot-solo



Wildwechsel_EP5



Wildwechsel_EP5-solo

24.12.2013
Schuppen LBE



Schuppen_LBE
Schuppen_LBE_IM

MS 4

MS4F054_Weihnachten_2013.zip

24.12.2013
Weihnachten im Vorashop



DB-Weichenheizer_BH1



Motocoupe_pol



Motocoupe_pol_im

Vora-Shop

dez2513.zip

22.12.2013
Zugschlussleuchten (4.Advent bei FKG)



Zugschlusslaternen-2_BH1

BH 1

Zugschlussleuchten-2.rar

22.12.2013

Containertragwagen vom Typ Sgnss von Green Cargo, beladen mit 20ft-Container von Volvo



GC_Sgnss-Volvo1_DB1



GC_Sgnss-Volvo2_DB1



GC_Sgnss-Volvo3_DB1



GC_Sgnss-Volvo4_DB1

DB 1

4-Advent-Free-DB1.rar

22.12.2013

Schindelwagen (4.Advent bei FKG)



HJB_Schindelwagen_Eisberg_r



HJB_Schindelwagen_Eisberg_r_



HJB_Schindelwagen_Eisberg_st

HB 2

HB2044_Schindelwagen_Eisberg.rar

22.12.2013

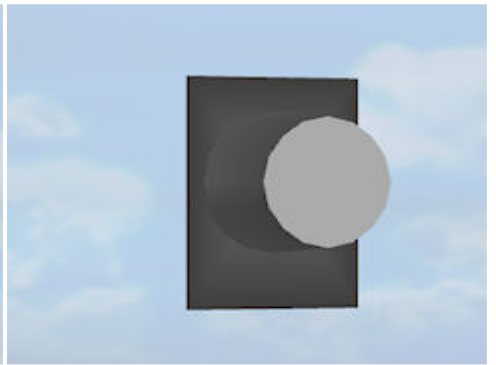
4. Advent im Vorashop



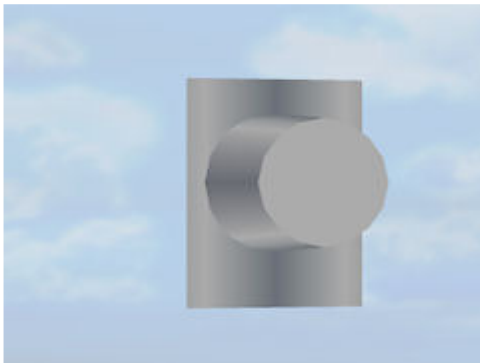
Wandleuchte1_oT



Wandleuchte1_T147



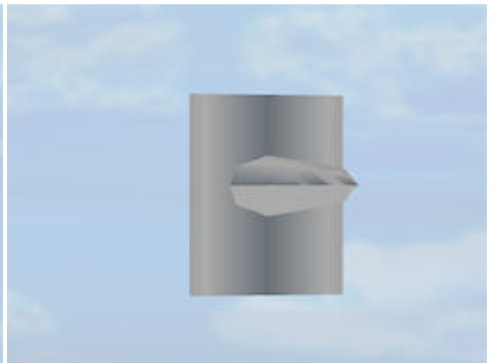
Wandleuchte2_oT



Wandleuchte2_T147



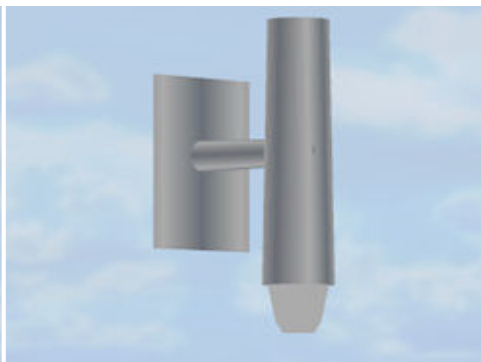
Wandleuchte3_oT



Wandleuchte3_T147



Wandleuchte4_oT



Wandleuchte4_T147



Aussichtsplattform_Holz_2m_FF1



Bhf_Spitz_GS_Winter

21.12.2013

Felswände (5 Jahre AF1)



Felswand_01_AF1



Felswand_02_AF1



Felswand_03_AF1



Felswand_04_AF1

Das EEP-Depot

Felswand_AF1.zip

21.12.2013

ABx Wagen mit DED Werbung (Adventskalender im DED)



ABx_DED_DR1

Das EEP-Depot

21_41360.rar

19.12.2013

Laster Franz Kottel (Adventskalender im DED)



MB_LP__608_L11_LKW_Kottel_JE1

MB_LP__608_L12_LKW_Kottel_JE1

MB_LP__608_L13_LKW_Kottel

MB_LP__608_L11_LKW_Kottel_FW_JE1

MB_LP__608_L12_LKW_Kottel_FW_JE1

MB_LP__608_L13_LKW_Kottel

MB_LP__608_L11_LKW_Kottel_IMO_JE1

MB_LP__608_L12_LKW_Kottel_IMO_JE1

MB_LP__608_L13_LKW_Kottel



MB_LP__608_L14_LKW_Kottel_JE1

MB_LP__608_L14_LKW_Kottel_FW_JE1

MB_LP__608_L14_LKW_Kottel_IMO_JE1

Das EEP-Depot

19_JE1.rar

19.12.2013

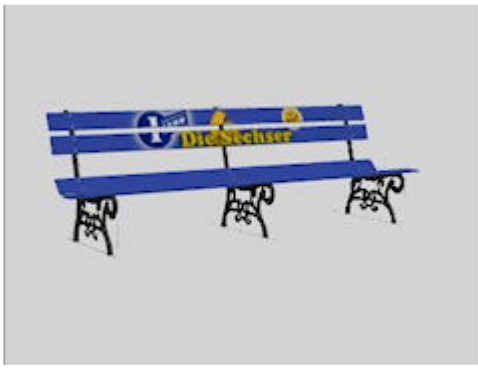
Die Sechser - Jubiläums-Paket



DBAG_Hcceerrs_330_Teil-A1_Railion_6er_DB1

Hindenburg_pw1

LBE_Bhstbank_1JahrSechser_BH2



LBE_Parkbank_1JahrSechser_BH2



Litfasssaule_1JahrSechser



Plakatwand1JahrSechser_BH2



T2_TRAN_96_Forum_JE1
T2_TRAN_96_Forum_FW_JE1
T2_TRAN_96_Forum_IMO_JE1



T2_TRAN_97_Forum_JE1
T2_TRAN_97_Forum_FW_JE1
T2_TRAN_97_Forum_IMO_JE1



Wandplakat_1JahrSechser_BH2

Die 6er - freie Modelle

Die_Sechser_1-Geburtstag.exe

19.12.2013

Rangierer EpIII Winter



Rangierer_III_Winter_6er_BH1
Rangierer_III_Winter_6er_Str_BH1

Die 6er - freie Modelle

Rangierer EpIII-Winter 6er_BH1.rar

19.12.2013

Abschlüsse Kreihnsdoerp Winter



Abschluss_Bahnsteig-Kreihnsdoerp
_9mWi

Abschluss_KreihnsdoerpWi

SK 3

Abschluesse_Kreihnsdoerp_Winter.rar

18.12.2013

Feldspritzen Anhaenger



Feldspritze-Rau-Str
Feldspritze-Rau-FW
Feldspritze-Rau-IM

Feldspritze-Deere-Str
Feldspritze-Deere-FW
Feldspritze-Deere-IM

Vora-Shop

Trend-Shop

MS400016.zip

V60NMS40004.zip

18.12.2013

Triebwagen RBe 540 Kolibri



SBB_RBe540_k_FH1

Vora-Shop

Trend-Shop

FH100003.zip

V60NFH10003.zip

18.12.2013

Containertragwagen Sgjs 712 DB DBAG



DB_Sgjs-712-leer_DB1



DB_Sgjs-712-Lad01_DB1



DB_Sgjs-712-Lad02_DB1



DB_Sgjs-712-Lad03_DB1



DB_Sgjs-712-Lad04_DB1



DB_Sgjs-712-Lad05_DB1



DB_Sgjs-712-Lad06_DB1



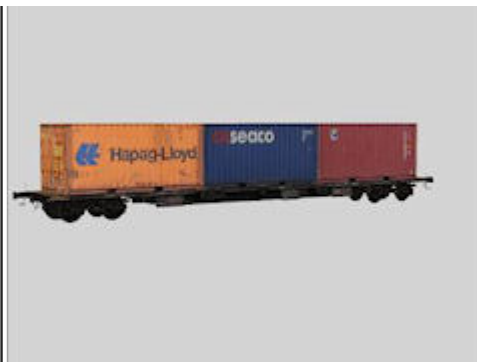
DB_Sgjs-712-Lad07_DB1



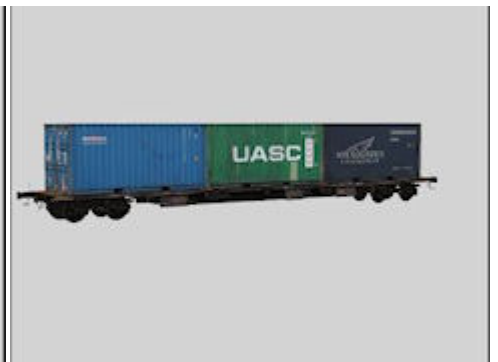
DB_Sgjs-712-Lad08_DB1



DBAG_Sgjs-712-leer_DB1



DBAG_Sgjs-712-Lad01_DB1



DBAG_Sgjs-712-Lad02_DB1



DBAG_Sgjs-712-Lad03_DB1



DBAG_Sgjs-712-Lad04_DB1



DBAG_Sgjs-712-Lad05_DB1



DBAG_Sgjs-712-Lad06_DB1



DBAG_Sgjs-712-Lad07_DB1



DBAG_Sgjs-712-Lad08_DB1

Vora-Shop
Trend-Shop

DB100164.zip
V60NDB10164.zip

18.12.2013

Containertragwagen Sgnss Green Cargo ERR



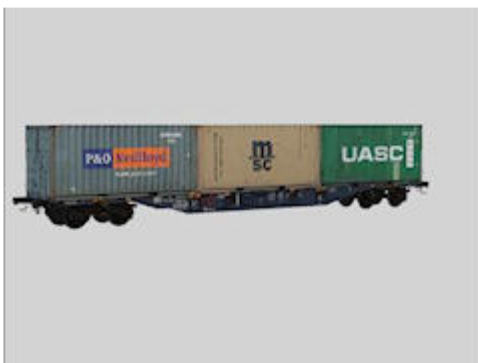
ERR_Sgnss-leer_DB1



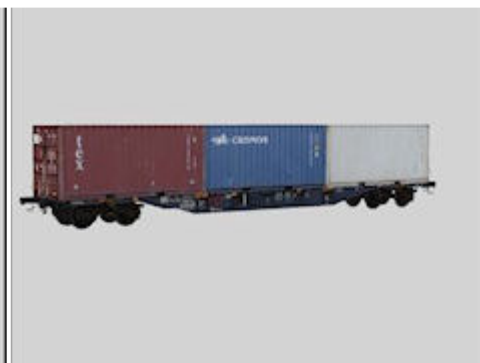
ERR_Sgnss-Lad01_DB1



ERR_Sgnss-Lad02_DB1



ERR_Sgnss-Lad03_DB1



ERR_Sgnss-Lad04_DB1



ERR_Sgnss-Lad05_DB1



ERR_Sgnss-Lad06_DB1



ERR_Sgnss-Lad07_DB1



ERR_Sgnss-Lad08_DB1



GC_Sgnss-leer_DB1



GC_Sgnss-Lad01_DB1



GC_Sgnss-Lad02_DB1



GC_Sgnss-Lad03_DB1



GC_Sgnss-Lad04_DB1



GC_Sgnss-Lad05_DB1



GC_Sgnss-Lad06_DB1



GC_Sgnss-Lad07_DB1



GC_Sgnss-Lad08_DB1

Vora-Shop
Trend-Shop

DB100163.zip
V60NDB10163.zip

18.12.2013

Containertragwagen Sgnss Sgns AAE DBAG



AAE_Sgnss-leer_DB1



AAE_Sgnss-Lad01_DB1



AAE_Sgnss-Lad02_DB1



AAE_Sgnss-Lad03_DB1



AAE_Sgnss-Lad04_DB1



AAE_Sgnss-Lad05_DB1



AAE_Sgnss-Lad06_DB1



AAE_Sgnss-Lad07_DB1



AAE_Sgnss-Lad08_DB1



DBAG_Sgns-681-leer_DB1



DBAG_Sgns-681-Lad01_DB1



DBAG_Sgns-681-Lad02_DB1



DBAG_Sgns-681-Lad03_DB1



DBAG_Sgns-681-Lad04_DB1



DBAG_Sgns-681-Lad05_DB1



DBAG_Sgns-681-Lad06_DB1



DBAG_Sgns-681-Lad07_DB1



DBAG_Sgns-681-Lad08_DB1

Vora-Shop
Trend-Shop

DB100162.zip
V60NDB10162.zip

18.12.2013

Containertragwagen Sggrss 80



DBAG_Sggrss-733-1A-leer_DB1



DBAG_Sggrss-733-1B-leer_DB1



DBAG_Sggrss-733-1A-Lad1_DB1



DBAG_Sggrss-733-1B-Lad1_DB1



DBAG_Sggrss-733-1A-Lad2_DB1



DBAG_Sggrss-733-1B-Lad2_DB1



DBAG_Sggrss-733-1A-Lad3_DB1



DBAG_Sggrss-733-1B-Lad3_DB1



DBAG_Sggrss-733-1A-Lad4_DB1



DBAG_Sggrss-733-1B-Lad4_DB1



DBAG_Sggrss-733-1A-Lad5_DB1



DBAG_Sggrss-733-1B-Lad5_DB1



DBAG_Sggrss-733-1A-Lad6_DB1



DBAG_Sggrss-733-1B-Lad6_DB1



DBAG_Sggrss-733-1A-Lad7_DB1



DBAG_Sggrss-733-1B-Lad7_DB1



DBAG_Sggrss-733-1A-Lad8_DB1



DBAG_Sggrss-733-1B-Lad8_DB1



DBAG_Sggrss-733-1A-Lad9_DB1



DBAG_Sggrss-733-1B-Lad9_DB1



DBAG_Sggrss-733-1A-Lad10_DB1



DBAG_Sggrss-733-1B-Lad10_DB1



Wascosa_Sggrss-80-1A-leer_DB1



Wascosa_Sggrss-80-1B-leer_DB1



Wascosa_Sggrss-80-1A-Lad1_DB1



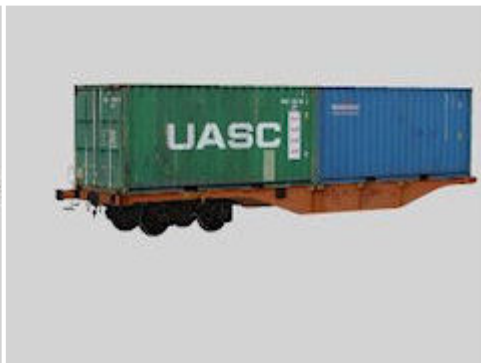
Wascosa_Sggrss-80-1B-Lad1_DB1



Wascosa_Sggrss-80-1A-Lad2_DB1



Wascosa_Sggrss-80-1B-Lad2_DB1



Wascosa_Sggrss-80-1A-Lad3_DB1



Wascosa_Sggrss-80-1B-Lad3_DB1



Wascosa_Sggrss-80-1A-Lad4_DB1



Wascosa_Sggrss-80-1B-Lad4_DB1



Wascosa_Sggrss-80-1A-Lad5_DB1



Wascosa_Sggrss-80-1B-Lad5_DB1



Wascosa_Sggrss-80-1A-Lad6_DB1



Wascosa_Sggrss-80-1B-Lad6_DB1



Wascosa_Sggrss-80-1A-Lad7_DB1 Wascosa_Sggrss-80-1B-Lad7_DB1 Wascosa_Sggrss-80-1A-Lad8_DB1



Wascosa_Sggrss-80-1B-Lad8_DB1 Wascosa_Sggrss-80-1A-Lad9_DB1 Wascosa_Sggrss-80-1B-Lad9_DB1

Vora-Shop
Trend-Shop

DB100161.zip
V60NDB10161.zip

18.12.2013

Zweiachs Containertragwagen Lgns 583



DBAG_Lgns-583-leer_DB1 DBAG_Lgns-583-Lad01_DB1 DBAG_Lgns-583-Lad02_DB1



DBAG_Lgns-583-Lad03_DB1 DBAG_Lgns-583-Lad04_DB1 DBAG_Lgns-583-Lad05_DB1



DBAG_Lgns-583-Lad06_DB1



DBAG_Lgns-583-Lad07_DB1



DBAG_Lgns-583-Lad08_DB1



DBAG_Lgns-583-Lad09_DB1



DBAG_Lgns-583-Lad10_DB1



DBAG_Lgns-583-Lad11_DB1



DBAG_Lgns-583-Lad12_DB1



DBAG_Lgns-583-Lad13_DB1

Vora-Shop
Trend-Shop

DB100160.zip
V60NDB10160.zip

18.12.2013

Containertragwagen Sggmrs 715



DBAG_Sggmrs-715-1A-leer_DB1



DBAG_Sggmrs-715-1B-leer_DB1



DBAG_Sggmrs-715-1A-Lad01_DB1



DBAG_Sggmrs-715-1B-Lad01_DB1 DBAG_Sggmrs-715-1A-Lad02_DB1 DBAG_Sggmrs-715-1B-Lad02_DB1



DBAG_Sggmrs-715-1A-Lad03_DB1 DBAG_Sggmrs-715-1B-Lad03_DB1 DBAG_Sggmrs-715-1A-Lad04_DB1



DBAG_Sggmrs-715-1B-Lad04_DB1 DBAG_Sggmrs-715-2A-leer_DB1 DBAG_Sggmrs-715-2B-leer_DB1



DBAG_Sggmrs-715-2A-Lad01_DB1 DBAG_Sggmrs-715-2B-Lad01_DB1 DBAG_Sggmrs-715-2A-Lad02_DB1



DBAG_Sggmrs-715-2B-Lad02_DB1 DBAG_Sggmrs-715-2A-Lad03_DB1 DBAG_Sggmrs-715-2B-Lad03_DB1



DBAG_Sggmrs-715-2A-Lad04_DB1 DBAG_Sggmrs-715-2B-Lad04_DB1 DBAG_Sggmrs-715-3A-leer_DB1



DBAG_Sggmrs-715-3B-leer_DB1 DBAG_Sggmrs-715-3A-Lad01_DB1 DBAG_Sggmrs-715-3B-Lad01_DB1



DBAG_Sggmrs-715-3A-Lad02_DB1 DBAG_Sggmrs-715-3B-Lad02_DB1 DBAG_Sggmrs-715-3A-Lad03_DB1



DBAG_Sggmrs-715-3B-Lad03_DB1 DBAG_Sggmrs-715-3A-Lad04_DB1 DBAG_Sggmrs-715-3B-Lad04_DB1

Vora-Shop
Trend-Shop

DB100159.zip
V60NDB10159.zip

17.12.2013

Wartburg311CampingSW (Adventskalender bei Roman Iwer)



Wartburg311CampingSW_JS2

JS 2

Dez_17.zip

15.12.2013

Kaltblüter (3. Advent bei FKG)



Kaltblut_dklbraun_1_BH1



Kaltblut_hellbraun_2_BH1

BH 1

Kaltblüter_BH1.rar

15.12.2013

Elektrolokomotive der Baureihe 189 in weiß von Siemens/PKP Cargo



PKP_189-846-EpVI_DB1-SK2

DB 1

3-Advent-Free-DB1.rar

15.12.2013

Toilettencontainer (3. Advent bei FKG)



HJB_Toilettencontainer



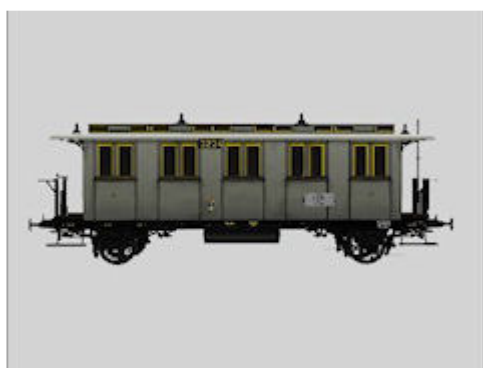
HJB_Toilettencontainer_wegweiser

HB 2

HB2043_Toilettencontainer.zip

15.12.2013

KPEV Di pr94 Berlin 3224 (3. Advent bei FKG)



KPEV-Di_pr94-Berlin_3224_HB4

HB 4

KPEV-Di_pr94-Berlin_3224_HB4.rar

15.12.2013

3. Advent im Vorashop



Antiquariat



Rauchfarn01 bis Rauchfarn20



Rauchfeuerfarn01
Rauchfeuerfarn02



Kabine_077

Vora-Shop

dez2313.zip

13.12.2013

Bx Wagen mit DED Werbung (Adventskalender im DED)



Bx_DED_DR1

Das EEP-Depot

13_41360.rar

12.12.2013

Mercedes Benz LP 1620 mit Anhaenger 1963 Set3



MB_LP_1620-
S08_LKW_tag_Muench
_JE1

MB_LP_1620-
S08_LKW_tag_Muench
_FW_JE1

MB_LP_1620-
S08_LKW_tag_Muench
_IMO_JE1



MB_LP_1620-
S08_ANH_tag_Muench
_JE1

MB_LP_1620-
S08_ANH_tag_Muench
_FW_JE1

MB_LP_1620-
S08_ANH_tag_Muench
_IMO_JE1

Vora-Shop

JE100052.zip

12.12.2013

Lifterweiterungen (Adventskalender im DED)



Mitte_Lift_Abdeckung



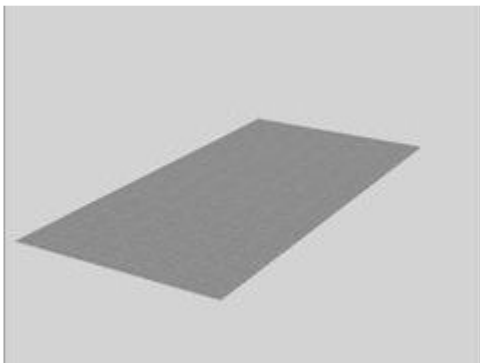
Mitte_Lift_FZ1_DH1

Das EEP-Depot

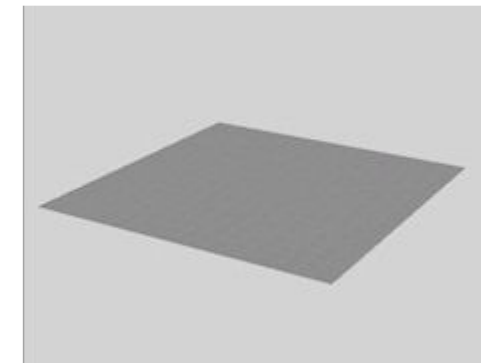
Dez_12.zip

10.12.2013

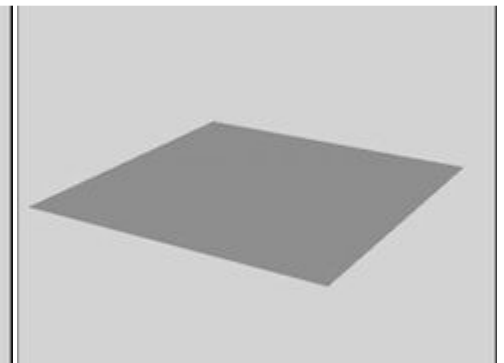
Modelle der Selfkantbahn



Bodenplatte_Pflaster5x10_WS2



Bodenplatte_Pflaster10x10_WS2



Bodenplatte_Pflaster20x20_WS2



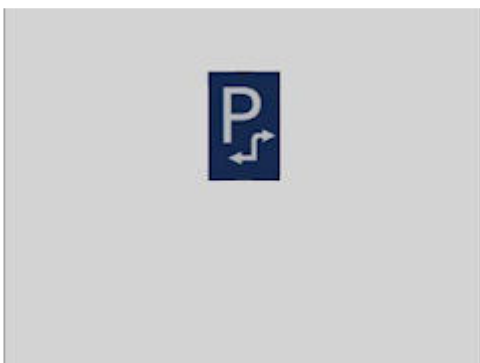
Uferboeschung_200m_WS2



Achtung_Gasthaus_WS2



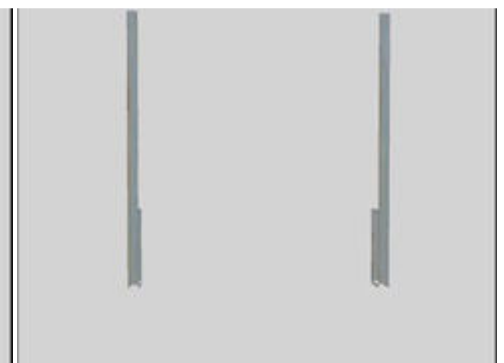
Parkplatz1_Selfk_WS2



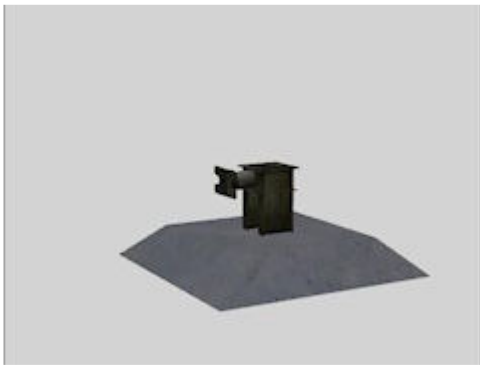
Parkplatz2_oPf_Selfk_WS2



WS2_Hinweisschild_B_10_I_Tx



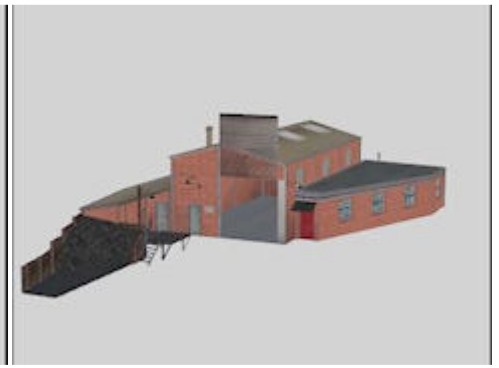
WS2_Schilderbr_Halter_3



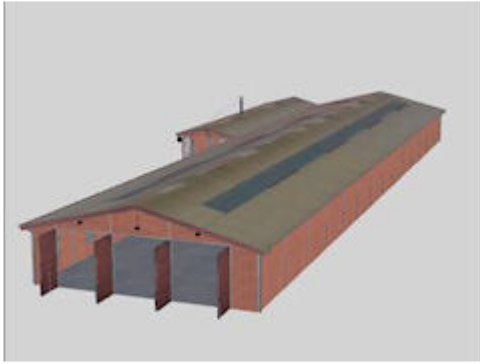
Prellbock_1000_WS2



Bekohlung_Podest_Selfk_WS2



Lockwerkstatt_Selfk_WS2



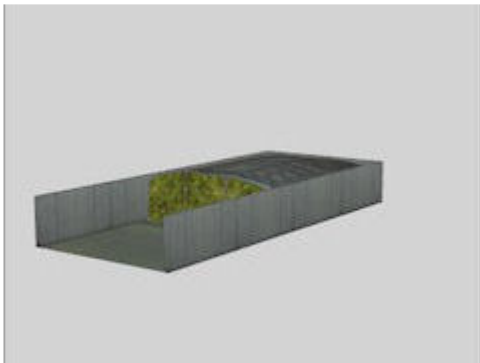
Lok_Wagenhalle_Selfk_WS2



Bhf_Gaststaette_Selfk_WS2



WS2_Silage



WS2_Silage_Mauer_half



Blumenkarre_WS2



WS2_Moertelsilo_grau



Bhf_Gillrath_Selfk_WS2



WS2_Weidemelkwagen



Toilette_Selfk_WS2



WS2_Brunnen_Spirale



WS2_Selfk_Denkmal



Infotafel_1_Selfk_WS2



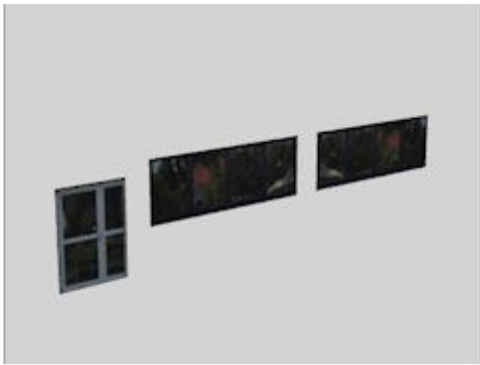
Infotafel_2_Selfk_WS2



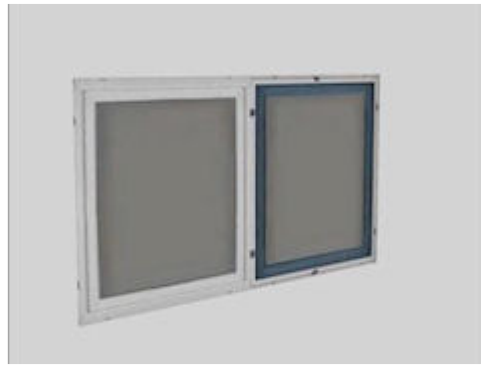
Infotafel_3_Selfk_WS2



Infotafel_4_Selfk_WS2



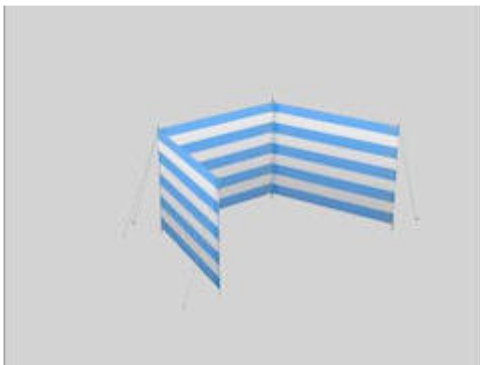
Fenster_Tuerfront_WS2



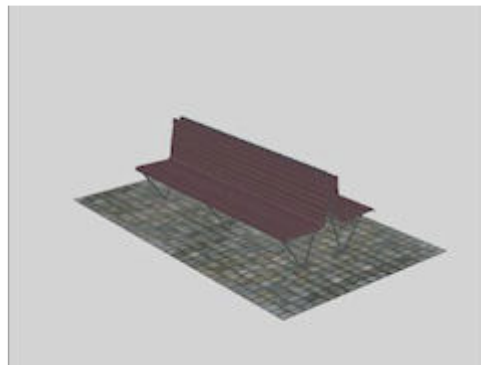
Fenster1_WS2



Fenster2_WS2



WS2_Windschutz2



Bhf_Bank_Pfl_Selfk_WS2



Blumenkasten_Geranie_WS2



Biergarten_Laterne_WS2



WS2_Selfk_Lampe



WS2_Selfk_Lampe_Stuetz



WS2_Selfk_Lichtm_Bhf_Abf_Gillr



WS2_Selfk_Lichtm_Bhf_Schild



WS2_Selfk_Lichtm_Warnung



WS2_Selfk_Lichtmast

WS2_Selfk_Lichtmast_einfl

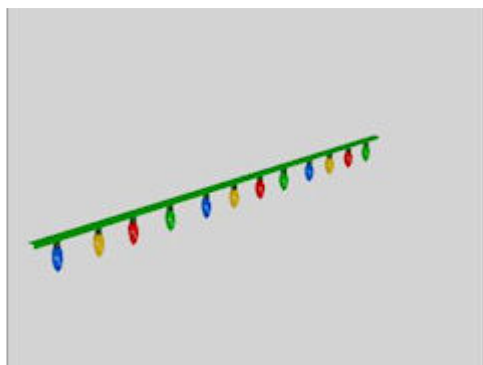
WS2_Freiltg



WS2_Freiltg_Abspann_R

WS2_Freiltg_Endmast

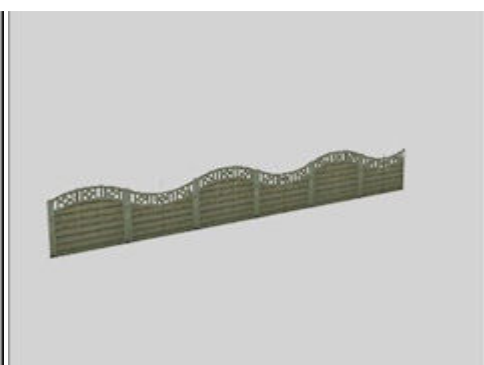
WS2_Freiltg_nur_Ltg



WS2_Lichterkette_3m

Strassenl_alt-Mast_WS2

Strassenl_alt-Mast-Abspan_L_WS2



Strassenleuchte_6x_Einfach_vz_WS2

Strassenleuchte_Einfach_vz_WS2

WS2_Sichtschutz_AB_12m



WS2_Sichtschutz_D



WS2_Sichtschutz_D_12m



WS2_Sichtschutz_D1



WS2_Sichtschutz_DE_10m



WS2_SichtschutzF



WS2_SichtschutzF_12m



WS2_SichtschutzF_Gitter



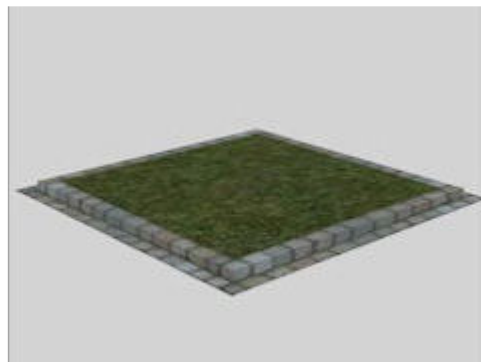
WS2_SichtschutzF1_Gitter



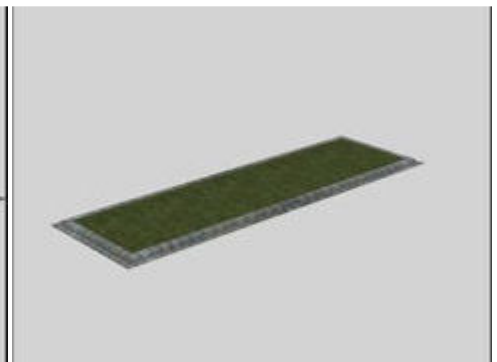
Rammschutz_WS2



Ausstellung_Selfk_WS2



Baumrabatte_Quadr_Selfk_WS2



Baumrabatte_Selfk_WS2



Baumstamm_Geranie_WS2



Eingangstuer_WS2



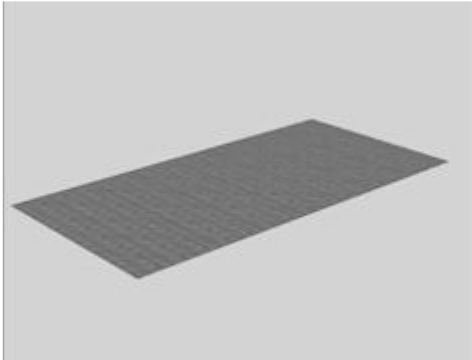
WS2_Heizer_Selfk_RM

10.12.2013

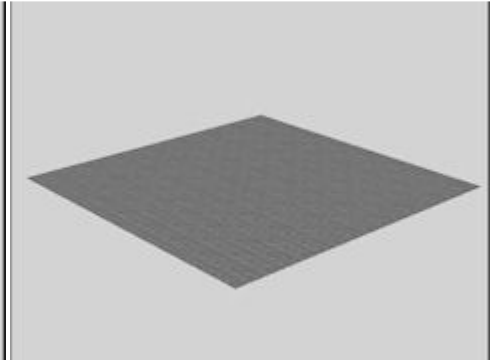
Anlage Selfkantbahn



Anlage Selfkantbahn



Pflaster30x30_5x10m_pw1



Pflaster30x30_10x10m_pw1

08.12.2013

Containertragwagen vom Typ Sgns/Sgnss, beladen mit offenen 30ft Container von Innofreight



DBAG_Sgns-681-Lad09_DB1



DBAG_Sgns-681-Lad10_DB1



GC_Sgnss-Lad09_DB1



GC_Sgnss-Lad10_DB1

08.12.2013

Schenker-Truck (2. Advent bei FKG)



HJB_Schenker_Trailer



HJB_Schenker_Trailer_st



HJB_Schenker_Truck



HJB_Schenker_Truck_st

HB 2

HB2042_Schenker_Truck.rar

08.12.2013

KPEV Ci pr91 Berlin 1443 (2. Advent bei FKG)



KPEV-Ci_pr91-Berlin_1443_HB4

HB 4

KPEV-Ci_pr91-Berlin_1443_HB4.rar

08.12.2013

Weichenheizung



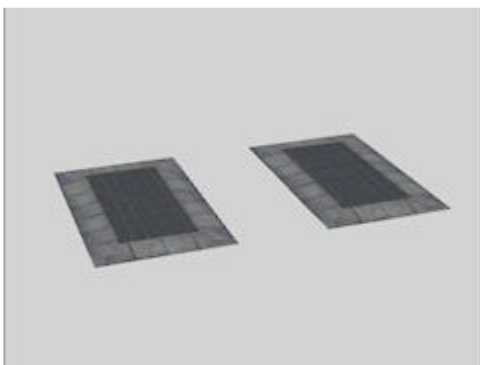
Weichenheizung_PW2

PW 2

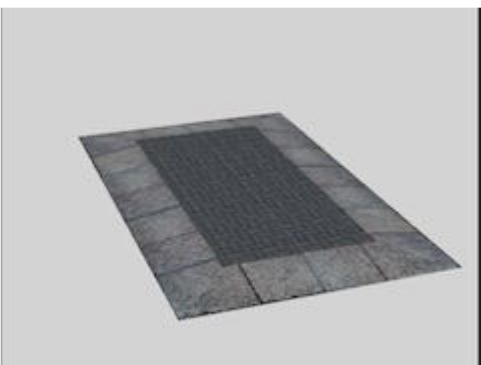
Weichenheizung_PW2.rar

08.12.2013

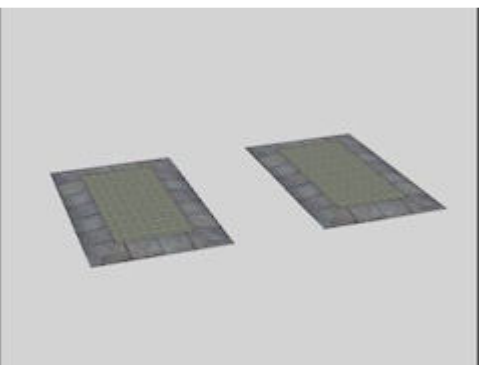
2. Advent im Vorshop



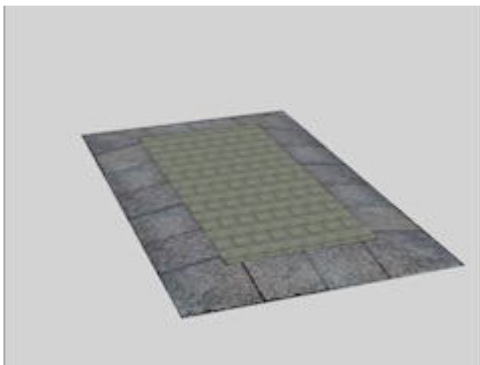
Berliner_Kissen_1



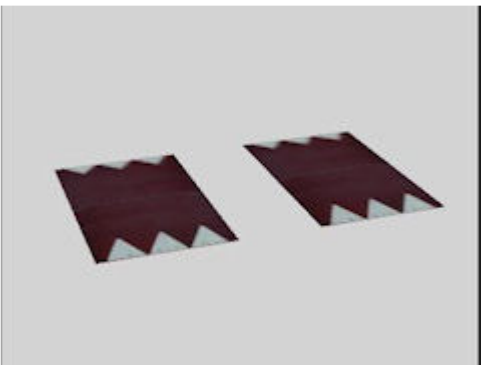
Berliner_Kissen_1r



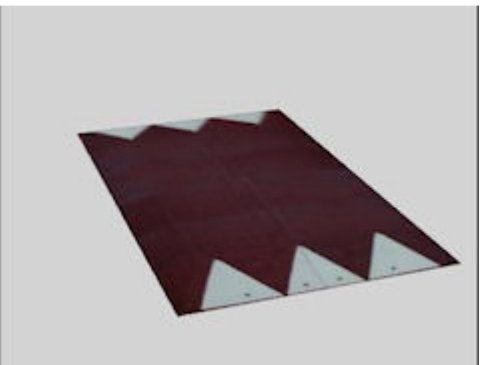
Berliner_Kissen_2



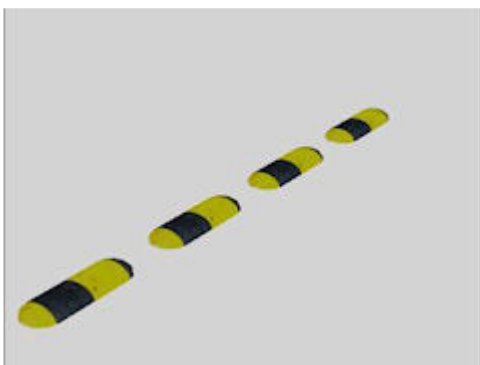
Berliner_Kissen_2r



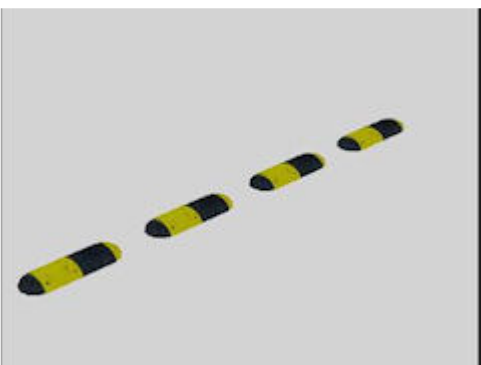
Berliner_Kissen_3



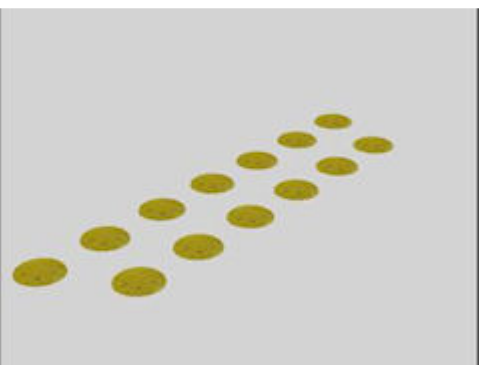
Berliner_Kissen_3r



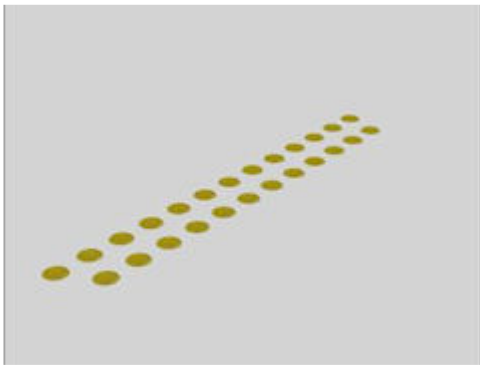
Bremsschwellen



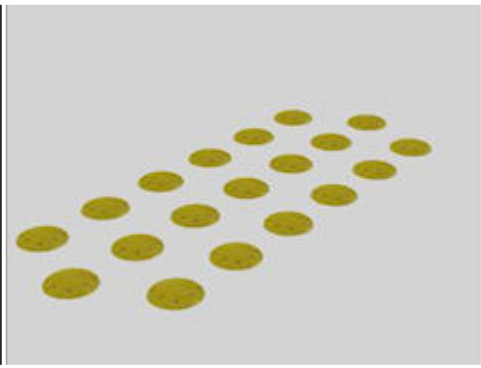
Bremsschwellen_IM



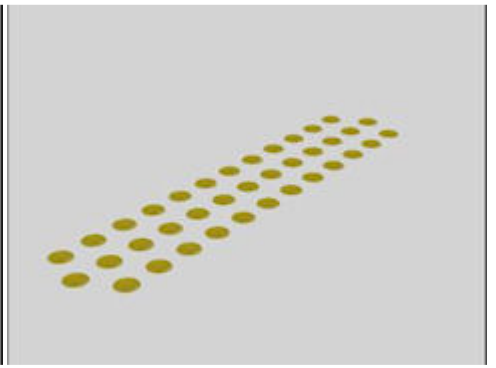
Koelner_Teller_Gelb2hr



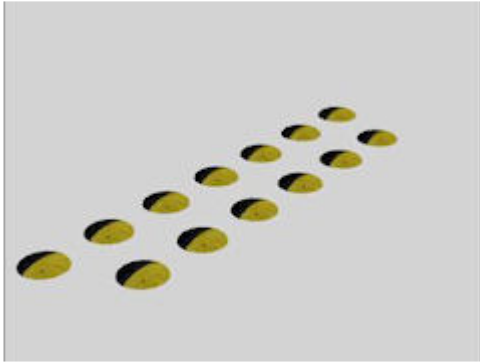
Koelner_Teller_Gelb2r



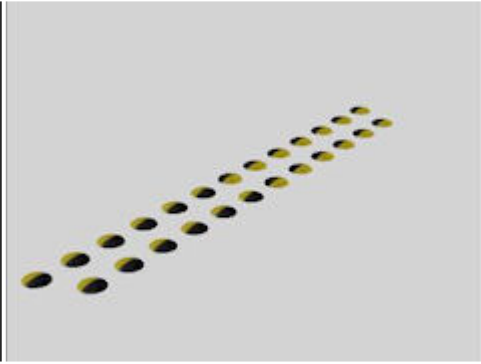
Koelner_Teller_Gelb3hr



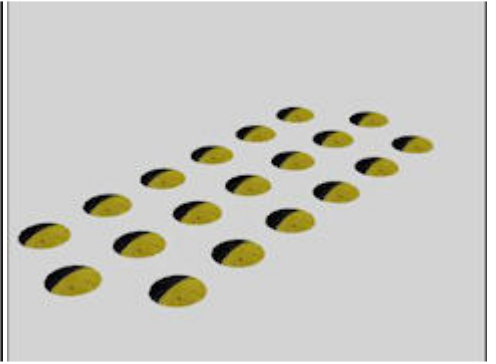
Koelner_Teller_Gelb3r



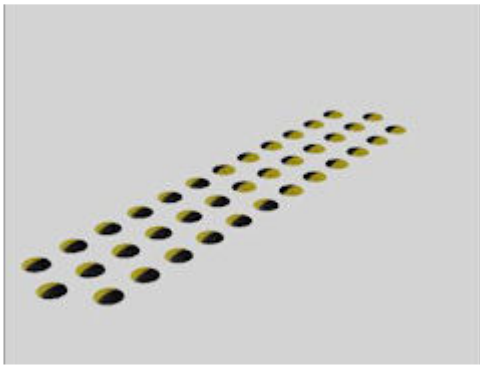
Koelner_Teller_ge-sw2hr



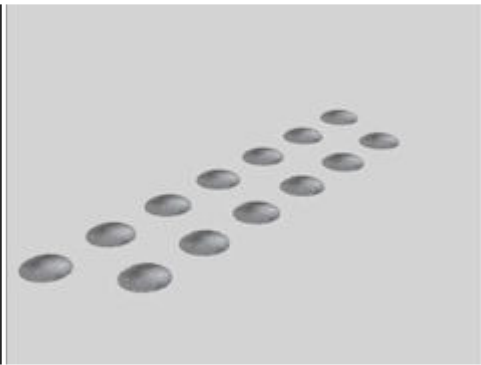
Koelner_Teller_ge-sw2r



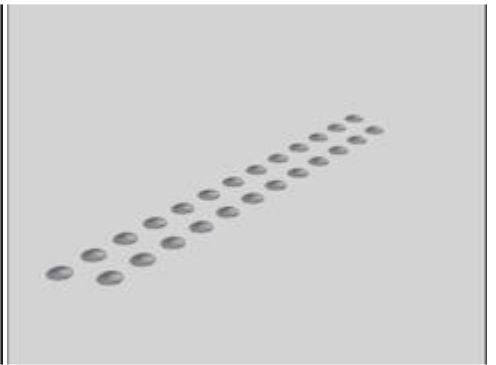
Koelner_Teller_ge-sw3hr



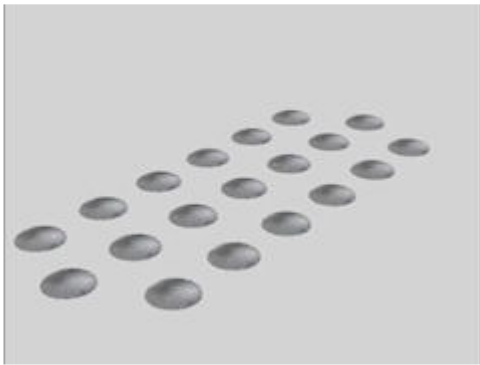
Koelner_Teller_ge-sw3r



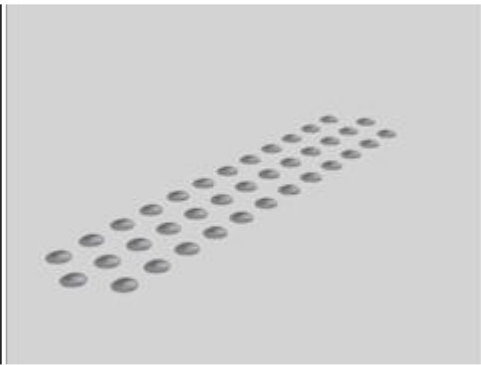
Koelner_Teller_Silber2hr



Koelner_Teller_Silber2r



Koelner_Teller_Silber3hr



Koelner_Teller_Silber3r



Zollinger-Anfang1



Zollinger-Anfang2



Zollinger-Anfang-Bau1



Zollinger-Anfang-Winter



Zollinger-Ende1



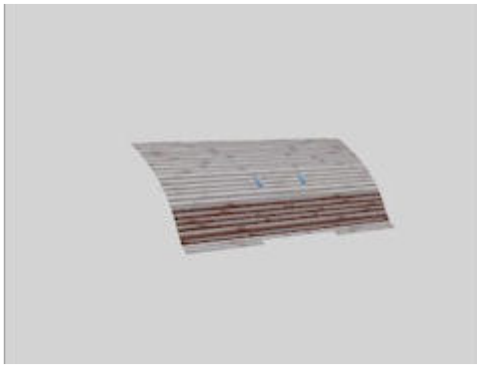
Zollinger-Ende-Bau1



Zollinger-Reihe1



Zollinger-Reihe2



Zollinger-Reihe2-Winter



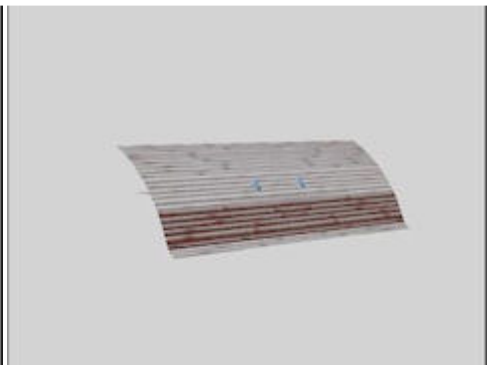
Zollinger-Reihe3



Zollinger-Reihe4



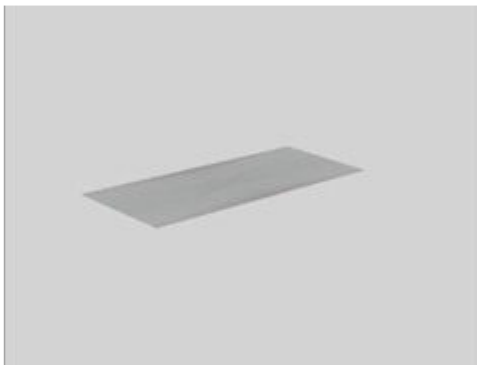
Zollinger-Reihe5



Zollinger-Reihe5-Winter



Zollinger-Stall1



Zollinger-Stall1-Winter



Zollinger-Stall2



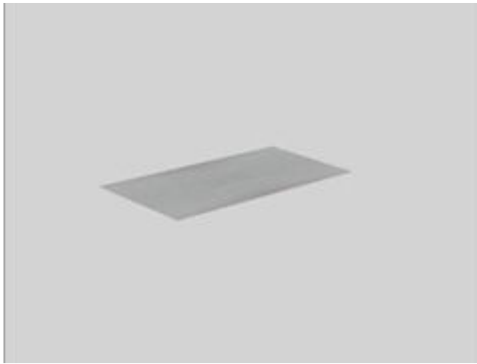
Zollinger-Stall3



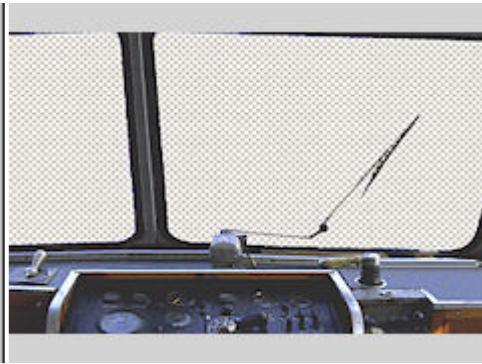
Zollinger-Stall4



Zollinger-Stall5



Zollinger-Stall5-Winter



Kabine_075

Vora-Shop

dez2213.zip

07.12.2013

BR 151 RBH Set2



RBH_151-081-EpVI_DB1-SK2



RBH_151-123-EpVI_DB1-SK2

Vora-Shop

DB100158.zip

Trend-Shop

V60NDB10158.zip

07.12.2013

BR 151 RBH Set1



RBH_151-084-EpVI_DB1-SK2



RBH_151-143-EpVI_DB1-SK2



RBH_151-144-EpVI_DB1-SK2



RBH_151-147-EpVI_DB1-SK2

Vora-Shop
Trend-Shop

DB100157.zip
V60NDB10157.zip

07.12.2013

BR 189 Dispolok NF Cargo



Dispolok_NF-Cargo_189-989-EpVI
_DB1-SK2



Dispolok_NF-Cargo_189-993-EpVI
_DB1-SK2

Vora-Shop
Trend-Shop

DB100156.zip
V60NDB10156.zip

07.12.2013

BR 189 Dispolok Nordcargo



Dispolok_Nordcargo_189-913-EpVI
_DB1-SK2



Dispolok_Nordcargo_189-925-EpVI
_DB1-SK2

Vora-Shop
Trend-Shop

DB100155.zip
V60NDB10155.zip

06.12.2013

Klv12 (Nikolaus bei FKG)



DB_klv12-4711_BH1

BH 1

Nikolaus-2013_BH1.rar

06.12.2013

Bus-Fahrspurwechsel



BusA12m2ST-gelb2

CS 2

Bus_Fahrspurwechsel.zip

06.12.2013

Elektrolokomotive der Baureihe Re474 im Siemens-Werbedesign



Siemens_Re474-201-EpVI_DB1-SK2

DB 1

Nikolaus-Free-DB1.rar

06.12.2013
Unterstände 2



DK1_Unterstand2



DK1_Unterstand2_Wi

DK 1

DK1128.exe

06.12.2013
KPEV Di pr91 Berlin 3100



KPEV-Di_pr91-Berlin_3100_HB4

HB 4

KPEV-Di+pr91-Berlin+3100-HB4.rar

06.12.2013
Nikolaus im Vorashop



DB_Samms709_FW-Str_BH1



T2_TRAN_21_Orange_JE1
T2_TRAN_21_Orange_FW_JE1
T2_TRAN_21_Orange_IMO_JE1



T2_TRAN_22_Himbeere_JE1
T2_TRAN_21_Himbeere_FW_JE1
T2_TRAN_21_Himbeere_IMO_JE1



T2_TRAN_23_Heidelbeere_JE1

T2_TRAN_24_Banane_JE1

T2_TRAN_25_Kiwi_JE1

T2_TRAN_23_Heidelbeere_FW_JE1

T2_TRAN_24_Banane_FW_JE1

T2_TRAN_25_Kiwi_FW_JE1

T2_TRAN_23_Heidelbeere_IMO_JE1

T2_TRAN_24_Banane_IMO_JE1

T2_TRAN_25_Kiwi_IMO_JE1



Kabine_073

Kabine_074

Vora-Shop

dez2113.zip

05.12.2013

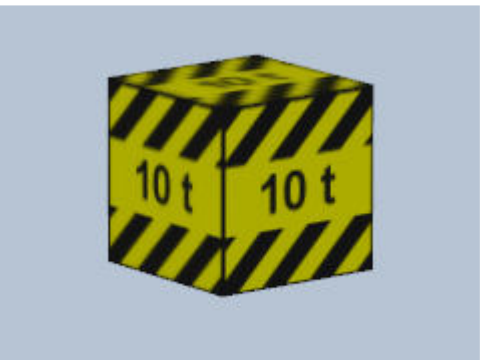
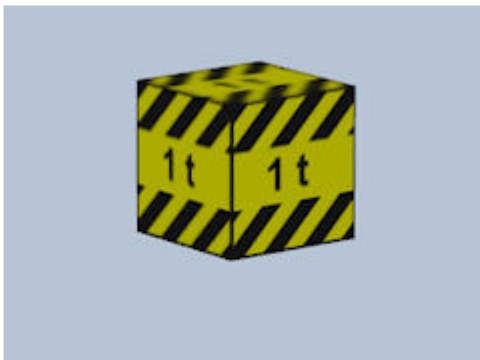
V6_Ballastgewichte für Schiene und Strasse



Ballast_100t

Ballast_200t

Ballast_500t



Ballast_1t

Ballast_5t

Ballast_10t



Ballast_20t

SB 4

V6_Ballast_SB4.zip

05.12.2013

Unterstände (Adventskalender im DED)



DK1_Unterstand1



DK1_Unterstand1_Wi

Das EEP-Depot

05_stormblast.rar

04.12.2013

BR 189 Dispolok SBB



Dispolok_SBB_189-995-EpVI
_DB1-SK2



Dispolok_SBB_189-996-EpV
_DB1-SK2

Vora-Shop

Trend-Shop

DB100154.zip

V60NDB10154.zip

04.12.2013
BR 189 Veolia



Veolia_189-094-EpVI_DB1-SK2



Veolia_189-095-EpVI_DB1-SK2

Vora-Shop
Trend-Shop

DB100153.zip
V60NDB10153.zip

04.12.2013
BR 186 Captain EpVI



Captrain_186-142-EpVI_DB1_SK2



Captrain_186-148-EpVI_DB1_SK2



Captrain_186-149-EpVI_DB1_SK2



Captrain_186-150-EpVI_DB1_SK2

Vora-Shop
Trend-Shop

DB100152.zip
V60NDB10152.zip

04.12.2013

BR 186 DBAG EpVI



DBAG_186-321-EpVI_DB1_SK2



DBAG_186-326-EpVI_DB1_SK2



DBAG_186-330-EpVI_DB1_SK2



DBAG_186-333-EpVI_DB1_SK2

Vora-Shop
Trend-Shop

DB100151.zip
V60NDB10151.zip

03.12.2013

Schnellzuglokomotive kkStb 380



kkStb380_101



Tender_kkStB_380

Vora-Shop
Trend-Shop

FF100043.zip
V60NFF10043.zip

03.12.2013

Universal Gleismauer Set



V61_Gleismauerabschluss
_gerade_SB4



V61_Gleismauerabschluss
_schraeg_SB4



V61_GmG_HL_Abschluss_SB4



V61_GmG_HR_Abschluss_SB4



V61_GmS_HL_Abschluss_SB4



V61_GmS_HL_Abschluss_SB4

Vora-Shop

SB400001.zip

01.12.2013

Buessing BS 16L von 1969 Unterflur



BUE_BS_16L-S03_LKW_Post_JE1

BUE_BS_16L-S03_LKW_Post_FW_JE1

BUE_BS_16L-
S03_LKW_Post_IMO_JE1



BUE_BS_16L-S03_ANH_DP_JE1

BUE_BS_16L-S03_ANH_DP_FW_JE1

BUE_BS_16L-
S03_ANH_DP_IMO_JE1

Vora-Shop

JE100051.zip

01.12.2013

Mann mit Fotoapparat (Advent bei FKG)



Mann_FotoApp_1_BH1

BH 1

Mann_FotoApp_1_BH1.rar

01.12.2013

**Containertragwagen vom Typ Sggmrs 715,
beladen mit 45ft Container von Bertschi**



DBAG_Sggmrs-715-3A-Lad05_DB1

DBAG_Sggmrs-715-3B-Lad05_DB1

DB 1

1-Advent-Free-DB1.rar

01.12.2013

Industrietore 2-3



TDR_Industrietor2

TDR_Industrietor3

TDR_Industrietor3_SH2

DS 3

TDR_Industrietore2-3.rar

01.12.2013

KPEV Ci pr91 Berlin 237 (Advent bei FKG)



KPEV-Ci_pr91-Berlin_237_HB4

HB 4

KPEV-Ci_pr91-Berlin_237_HB4.rar

01.12.2013

1. Advent im Vorashop



Muehlental



Kabine_057

Vora-Shop

dez2013.zip