

30.11.2014

Aquacar (von Hr. Fred Fuchs / FF1)

Freemodell zum 1.Advent



Aquacar_VORA

Vora-Shop

Dez2114.zip

30.11.2014

Zugschlussscheibe (1.Advent bei FKG)



Zugschlussscheibe_BH1

Hr. Bernt Hoppe

BH 1

BH1_Zugschlussscheibe-FKG.rar

30.11.2014

Pwi pr84 (1.Advent bei FKG)



DRG-Pwi_pr84-Altona_91-536_HB4

Hr. Holger Beran

HB 4

DRG-Pwi_pr84-Altona_91-536_HB4.zip

30.11.2014

Signaltafel „Halt für Zugfahrten“

Freemodell zum 1.Advent



Halt_fuer_Zugfahrten_BH2

Hr. Benjamin Hognl

BH 2

HaltFuerZugfahrten_BH2.zip

30.11.2014

Landhaus Set 2

Dieses Set knüpft an das Landhausset 1 (MK200032) an

Sommermodelle:



Landhaus7_MK2



Landhaus8_MK2



Landhaus9_MK2

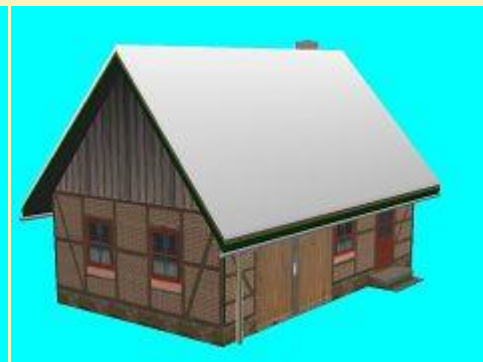
Wintermodelle:



Landhaus7-wi_MK2



Landhaus8-wi_MK2



Landhaus9-wi_MK2

Vora-Shop

MK200064.zip

28.11.2014

Dampflokomotiven ÖBB 674.498



DRG_74_498_HB1



KPEV_T12_7765_HB1



OBB_674_498_HB1

Vora-Shop
Trend-Shop

HB100098.zip
V60NHB10098.zip

26.11.2014

Gehende Menschen Epoche II Set 2

Bitte die Artikelbeschreibung im Shop beachten!



Dienstmädchen_II_1_BH1
Dienstmädchen_II_1_Str_BH1



Frau_II_05_BH1
Frau_II_05_Str_BH1



Junge_II_02_BH1
Junge_II_02_Str_BH1



Maedchen_II_02_BH1
Maedchen_II_02_Str_BH1



Mann_II_05_BH1
Mann_II_05_Str_BH1



Mann_II_06_BH1
Mann_II_06_Str_BH1

Vora-Shop

BH100243.zip

21.11.2014

Arbeitstriebwagen der Chemnitzer Straßenbahn mit TexEx



C_TW1035_JS2



C_TW1169_JS2



C_TW1271_JS2

Vora-Shop
Trend-Shop

JS200022
V60NJS20019.zip

21.11.2014

Personenzug-Tenderlokomotive ÖBB 75



BBO_229_89



kkStB_229_96



OBB_75-722

Vora-Shop
Trend-Shop

FF100062.zip
V60NFF10062.zip

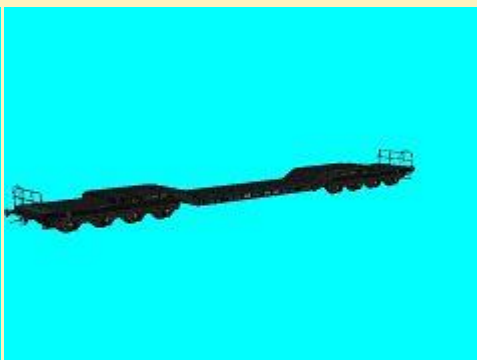
18.11.2014

Schwerlast Tiefladewagen SSt 425

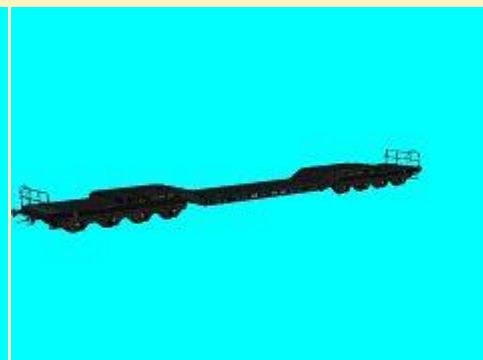
Rollmaterial:



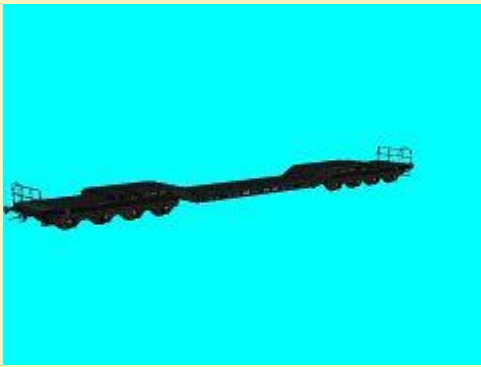
DB_Schwerlastwagen_Coil_SB4



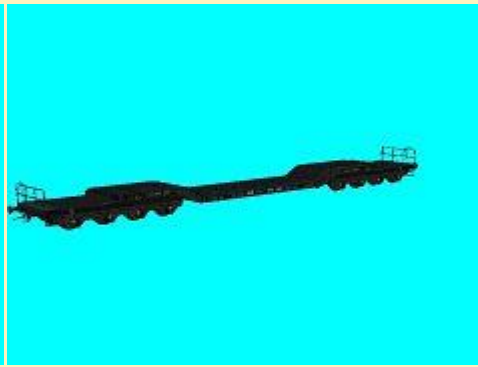
DB_Schwerlastwagen_low_SB4



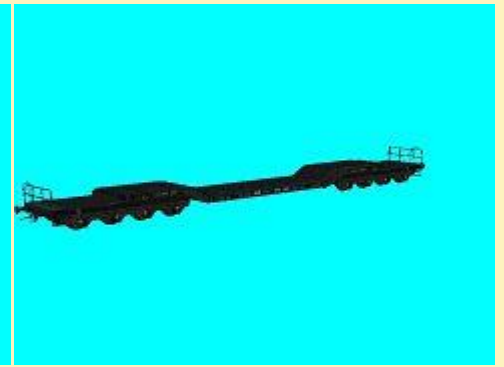
DB_Schwerlastwagen_Schiene_SB4



DB_Schwerlastwagen_
Schiene750_SB4

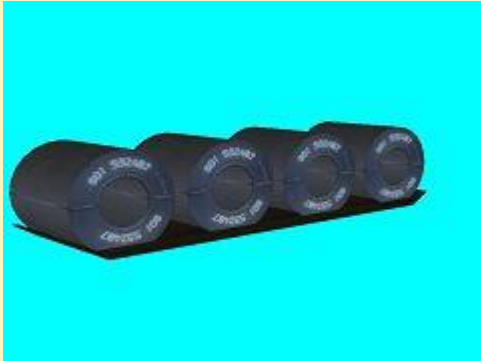


DB_Schwerlastwagen_
Schiene1000_SB4



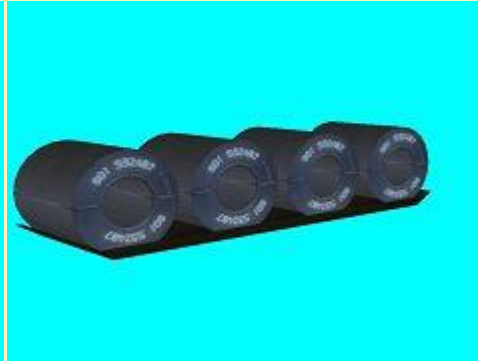
DB_Schwerlastwagen_Strasse_SB4

Ladegut:



Coilgestell

Immobilie:



Coilgestell_immo

Vora-Shop

SB400003.zip

17.11.2014

DRG Personenzug-Gepäckwagen, Pwi pr84 - Set 2



DRG-Pwi_pr84-Frankfurt_91-
536_HB4



DRG-Pwi_pr84-Frankfurt_91-
539_HB4



DRG-Pwi_pr84-Halle_91-538_HB4



DRG-Pwi_pr84-Hannover_91-
533_HB4



DRG-Pwi_pr84-Magdeburg_91-
546_HB4



DRG-Pwi_pr84-Mainz_91-543_HB4



DRG-Pwi_pr84-Posen_91-534_HB4



DRG-Pwi_pr84-Schwerin_91-542_HB4



DRG-Pwi_pr84-Stettin_91-541_HB4



DRG-Pwi_pr84-Stettin_91-550_HB4

Vora-Shop
Trend-Shop

HB400028.zip
V60NHB40028.zip

17.11.2014

DRG Personenzug-Gepäckwagen, Pwi pr84 - Set 1



DRG-Pwi_pr84-Altona_91-532_HB4



DRG-Pwi_pr84-Berlin_91-535_HB4



DRG-Pwi_pr84-Berlin_91-537_HB4



DRG-Pwi_pr84-Berlin_91-541_HB4



DRG-Pwi_pr84-Berlin_91-547_HB4



DRG-Pwi_pr84-Breslau_91-530_HB4



DRG-Pwi_pr84-Breslau_91-542_HB4



DRG-Pwi_pr84-Breslau_91-553_HB4



DRG-Pwi_pr84-Cassel_91-543_HB4



DRG-Pwi_pr84-Essen_91-548_HB4

Vora-Shop
Trend-Shop

HB400027.zip
V60NHB40027.zip

17.11.2014

K.P.E.V. Personenzug-Gepäckwagen, Pwi pr84 - Set 2



KPEV-Pwi_pr84-Frankfurt_3386_HB4



KPEV-Pwi_pr84-Halle_3366_HB4



KPEV-Pwi_pr84-Halle_3386_HB4



KPEV-Pwi_pr84-Hannover_3026_HB4



KPEV-Pwi_pr84-Magdeburg_3021_HB4



KPEV-Pwi_pr84-Magdeburg_3026_HB4



KPEV-Pwi_pr84-Stettin_3078_HB4 KPEV-Pwi_pr84-Stettin_3637_HB4

Vora-Shop
Trend-Shop

HB400026.zip
V60NHB40026.zip

17.11.2014

K.P.E.V. Personenzug-Gepäckwagen, Pwi pr84 - Set 1



KPEV-Pwi_pr84-Berlin_3058_HB4 KPEV-Pwi_pr84-Berlin_3367_HB4 KPEV-Pwi_pr84-Berlin_3386_HB4



KPEV-Pwi_pr84-Berlin_3539_HB4 KPEV-Pwi_pr84-Berlin_4011_HB4 KPEV-Pwi_pr84-Breslau_4010_HB4



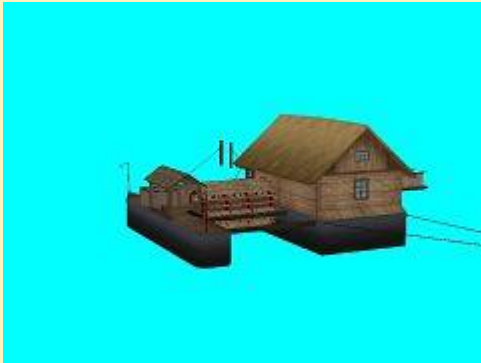
KPEV-Pwi_pr84-Cassel_3078_HB4 KPEV-Pwi_pr84-Essen-3020_HB4

Vora-Shop
Trend-Shop

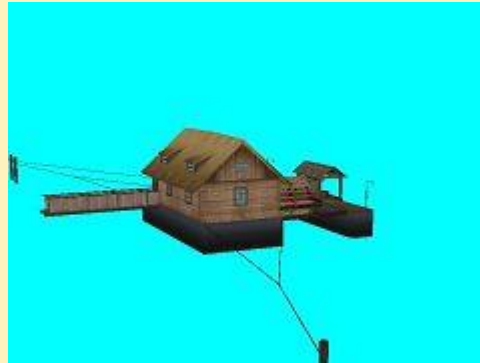
HB400025.zip
V60NHB40025.zip

13.11.2014

Schiffsmühle



Schiffsmuehle_FF1_Li



Schiffsmuehle_FF1_Re

Vora-Shop

Trend-Shop

FF100061.zip

V60NFF10061.zip

10.11.2014

Stahlfachwerkbruecken Baukasten Set 7

Stahlfachwerkbrücken

Baukasten Set 7

747 Modelle

30 Splines mit ID

16 Splines ohne ID

[PDF-Dokumentation](#)

Stahlfachwerkbruecken Baukasten Set 7

Vora-Shop

Trend-Shop

RT200008.zip

V60NRT20008.zip

07.11.2014

Industriehallen Waschbeton Set 2

Zwei verschiedene Texturgrößen und -qualitäten stehen zur Auswahl



Halle_Beton_A_18_mtr_JE1



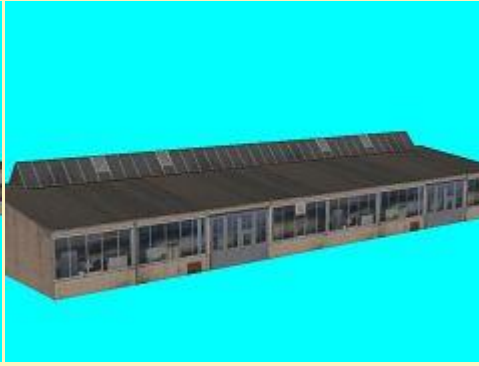
Halle_Beton_A_18_mtr_OberL_JE1



Halle_Beton_A_18_mtr_OberGesch_JE1



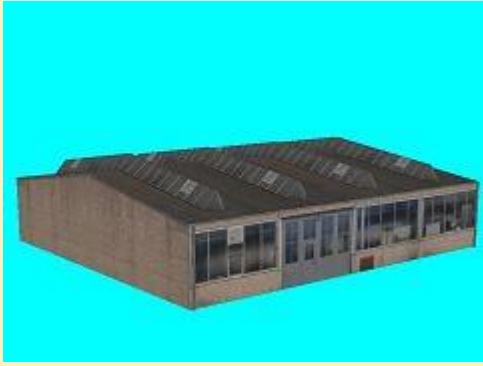
Halle_Beton_A_36_mtr_JE1



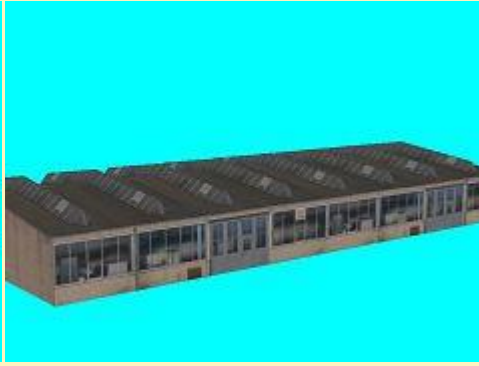
Halle_Beton_A_36_mtr_OberL_JE1



Halle_Beton_A_36_mtr_OberGesch_JE1



Halle_Beton_A_18_mtr_OberLqu_JE1



Halle_Beton_A_36_mtr_OberLqu_JE1

Vora-Shop
Trend-Shop

JE100062.zip
V60NJE10062.zip

04.11.2014

E-Loks BR 155 or der DBAG Epoche VI Set 1



DBAG_155-214-or-EpVI_DB1-SK2



DBAG_155-219-or-EpVI_DB1-SK2

Vora-Shop
Trend-Shop

DB100190.zip
V60NDB10190.zip

04.11.2014

E-Loks BR 155 or der DBAG Epoche V Set 3



DBAG_155-048-or-EpV_DB1-SK2

DBAG_155-057-or-EpV_DB1-SK2

DBAG_155-270-or-EpV_DB1-SK2

Vora-Shop

DB100189.zip

Trend-Shop

V60NDB10189.zip

04.11.2014

E-Loks BR 155 or der DBAG Epoche V Set 2



DBAG_155-030-or-EpV_DB1-SK2

DBAG_155-188-or-EpV_DB1-SK2

DBAG_155-228-or-EpV_DB1-SK2

Vora-Shop

DB100188.zip

Trend-Shop

V60NDB10188.zip

04.11.2014

E-Loks BR 155 or der DBAG Epoche V Set 1



DBAG_155-006-or-EpV_DB1-SK2

DBAG_155-098-or-EpV_DB1-SK2

Vora-Shop

DB100187.zip

Trend-Shop

V60NDB10187.zip

04.11.2014

E-Loks BR 155 or der DBAG Epoche IV Set 1



DR_155-012-or-EpIV_DB1-SK2



DR_155-102-or-EpIV_DB1-SK2



DR_155-192-or-EpIV_DB1-SK2



DR_155-196-or-EpIV_DB1-SK2

Vora-Shop
Trend-Shop

DB100186.zip
V60NDB10186.zip

04.11.2014

Industriehallen Set

oberer gsb-Name: Gleisobjekt / unterer gsb-Name: Immobilie



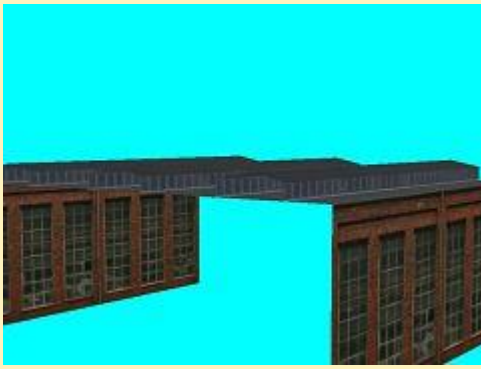
Industriehalle_TorL_SB4
Industriehalle_TorL_SB4



Industriehalle_TorM_SB4
Industriehalle_TorM_SB4



Industriehalle_TorR_SB4
kein Immobilie vorhanden



Industriehalle_Verlaengerung_SB4
kein Immobilie vorhanden

Vora-Shop

SB400002.zip

01.11.2014

ÖBB andere Bahnhofschilder, Epoche IV



OBB_Bhf_And_Bahnexpress_HB1



OBB_Bhf_And_Bahnmeister_HB1



OBB_Bhf_And_Bahnvorstand_HB1



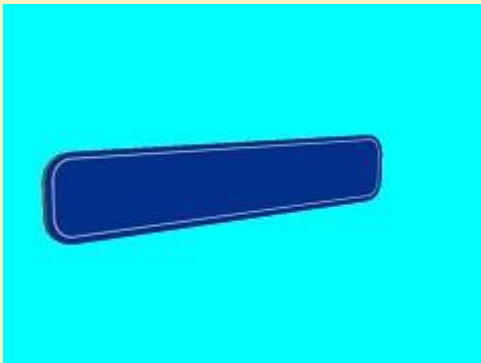
OBB_Bhf_And_Betr_verb_HB1



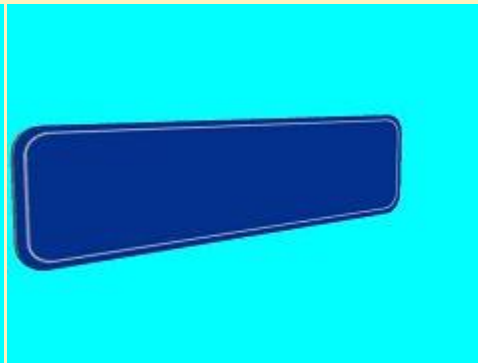
OBB_Bhf_And_Durchg_verb_HB1



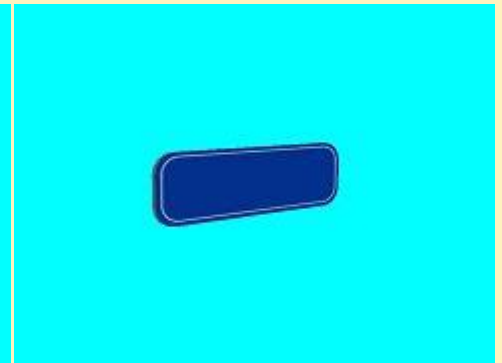
OBB_Bhf_And_Fahrdienstltg_HB1



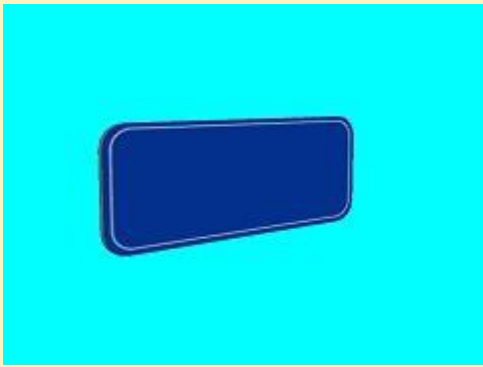
OBB_Bhf_And_Leer_gr_Tx_HB1



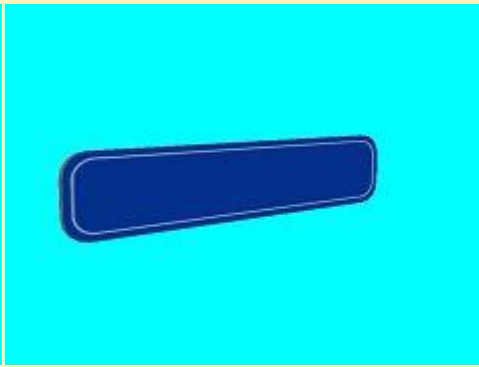
OBB_Bhf_And_Leer_gr2z_Tx_HB1



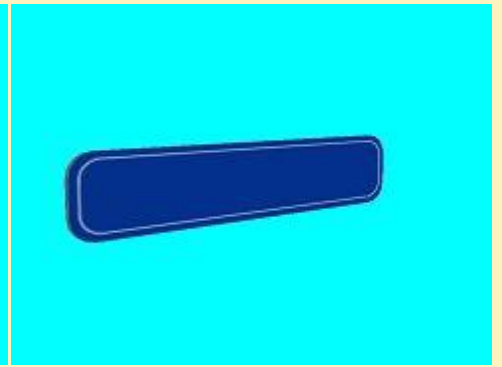
OBB_Bhf_And_Leer_kl_Tx_HB1



OBB_Bhf_And_Leer_kl2z_Tx_HB1



OBB_Bhf_And_Leer_mi1_Tx_HB1



OBB_Bhf_And_Leer_mi2_Tx_HB1



OBB_Bhf_And_Logo_bel_HB1



OBB_Bhf_And_Logo_HB1



OBB_Bhf_And_Logo_Plast_HB1



OBB_Bhf_And_UeG_verb_Bet_HB1



OBB_Bhf_And_UeG_verb_HB1



OBB_Bhf_And_ZuBStg_Ab_HB1



OBB_Bhf_And_ZuBStg_Auf_HB1



OBB_Bhf_And_ZuBStg_Li_HB1



OBB_Bhf_And_ZuBStg_Re_HB1



OBB_Bhf_And_ZuZueg_Ab_HB1



OBB_Bhf_And_ZuZueg_Auf_HB1



OBB_Bhf_And_ZuZueg_Li_HB1



OBB_Bhf_And_ZuZueg_Re_HB1



OBB_Bhf_Weg_Bahnhof_Li1_HB1



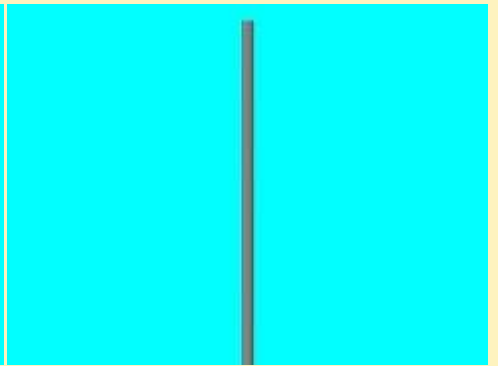
OBB_Bhf_Weg_Bahnhof_Li2_HB1



OBB_Bhf_Weg_Bahnhof_Re1_HB1



OBB_Bhf_Weg_Bahnhof_Re2_HB1



OBB_Bhf_Weg-Mast_hell_HB1

Vora-Shop
Trend-Shop

HB100097.zip

V60NHB10097.zip