

29.08.2015

Lokomotive OGEG_2050-05

Dies ist eine Schwester der Wachaubahnlok ÖSEK 2050.04 (siehe FF100072)



OGEG_2050-05

Vora-Shop

FF1fr011.zip

29.08.2015

Leopard 2A5 Set

Rollmaterial:



Leo2A5_Str_BH1
Leo2A5_FW_BH1



Leo2A5_SchadPz_BH1



DB-Bw_Rlmmmps650_Leo2A5_BH1

**unsicht-
bares
Modell**

Abstand-MilKol-25m_BH1

**unsicht-
bares
Modell**

Abstand-MilKol-50m_BH1

Immobilien:



Leo2A5_IM_BH1



Leo2A5_gezurrt_IM_BH1



Leo2A5_ETrsp_IM_BH1

Vora-Shop

BH100255.zip

27.08.2015

Zuggarnitur der Wachaubahn



OSEK_2050-04



NOEVOG_Schlieren_BDp_A



NOEVOG_Schlieren_BDp_B



NOEVOG_Schlieren_Bp_A



NOEVOG_Schlieren_Bp_B

Vora-Shop

Trend-Shop

FF100072.zip

V60NFF10072.zip

25.08.2015

BR 189 MRCE / Locon



MRCE_TXL_189-023-EpVI_DB1-SK2

Vora-Shop

DB100240.zip

Trend-Shop

V60NDB10240.zip

25.08.2015

BR 189 MRCE / Locon



MRCE_WLE_189-453-EpVI_DB1-SK2

Vora-Shop

DB100239.zip

Trend-Shop

V60NDB10239.zip

25.08.2015

BR 189 MRCE / Locon



MRCE_Lokomotion_189-027-EpVI_DB1-SK2

Vora-Shop

DB100238.zip

Trend-Shop

V60NDB10238.zip

25.08.2015

BR 189 MRCE / Locon



MRCE_Locon_189-098-EpVI_
DB1-SK2



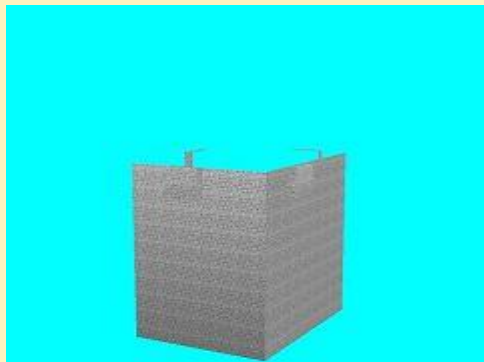
MRCE_Locon_189-098-EpVI_
DB1-SK2

Vora-Shop
Trend-Shop

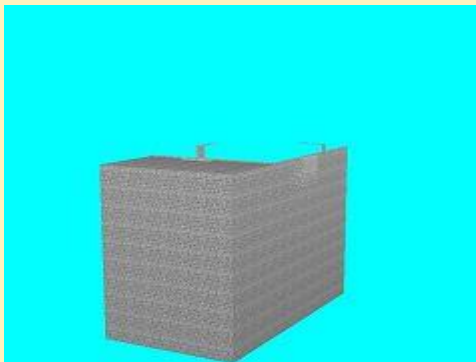
DB100237.zip
V60NDB10237.zip

24.08.2015

Fachwerkhäuser - Untersatz



Fachwerk1und2untersetzer



Fachwerk1und2untersetzer2

Vora-Shop

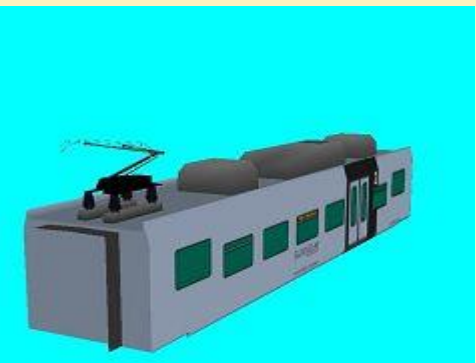
vr1fr017.zip

24.08.2015

KISS_Triebzug der CFL



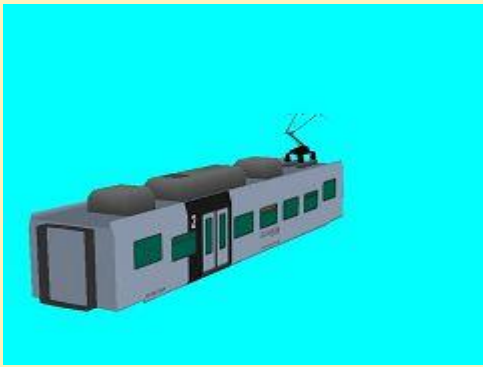
FLIRT3_Suewex_1_MK1



FLIRT3_Suewex_2_MK1



FLIRT3_Suewex_3_MK1



FLIRT3_Suedwex_4_MK1



FLIRT3_Suedwex_5_MK1

Vora-Shop
Trend-Shop

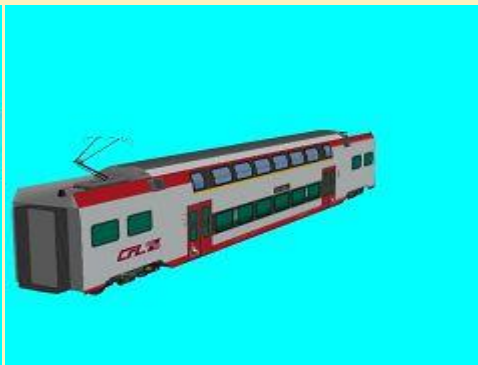
MK100205.zip
V60NMK10205.zip

24.08.2015

KISS_Triebzug der CFL



KISS_CFL_100_MK1



KISS_CFL_200_MK1



KISS_CFL_300_MK1

Vora-Shop
Trend-Shop

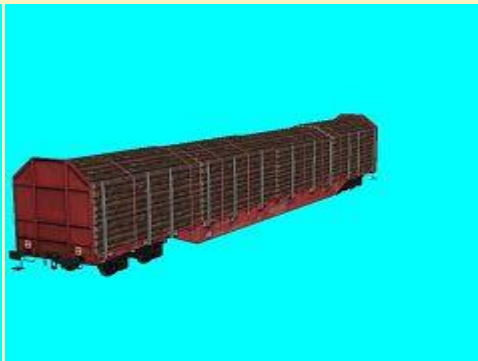
MK100204.zip
V60NMK10204.zip

19.08.2015

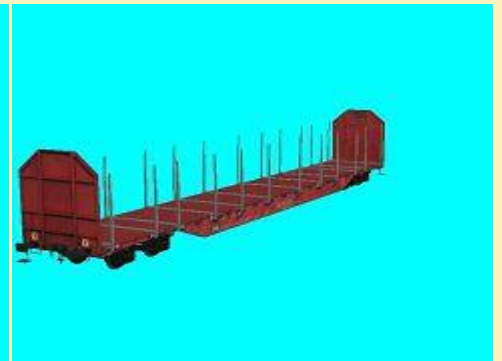
Holztransportwagen Typ Rnoos 644 der DBAG



DBAG_Rnoos-644_Railion_Bretter_DB1



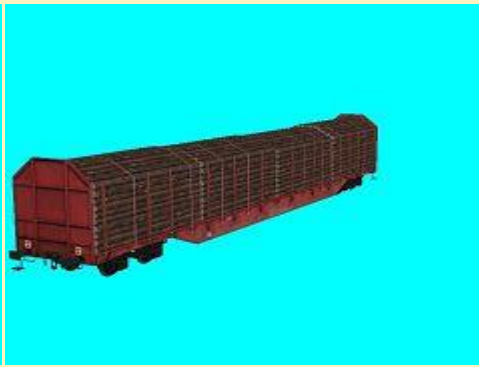
DBAG_Rnoos-644_Railion_Holz_DB1



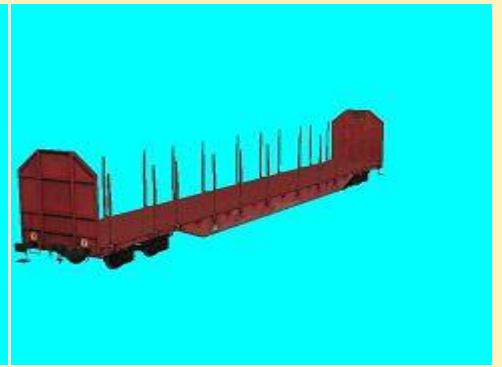
DBAG_Rnoos-644_Railion_leer_DB1



DBAG_Rnoos-644_Schenker1
_Bretter_DB1



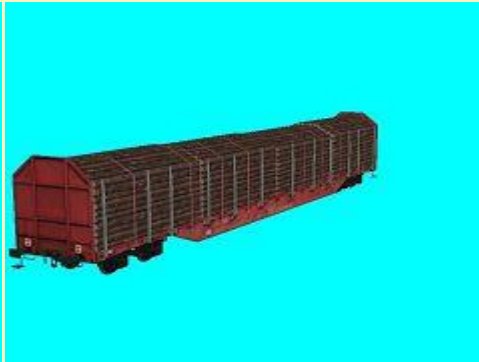
DBAG_Rnoos-644_Schenker1_Holz
_DB1



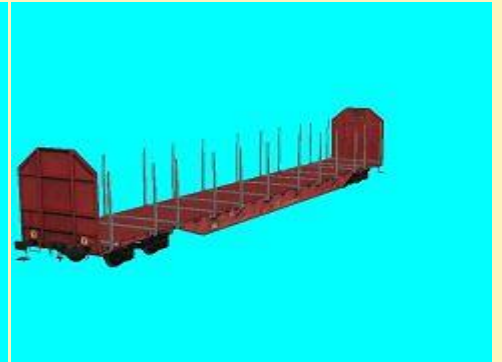
DBAG_Rnoos-644_Schenker1_leer
_DB1



DBAG_Rnoos-644_Schenker2
_Bretter_DB1



DBAG_Rnoos-644_Schenker2_Holz
_DB1



DBAG_Rnoos-644_Schenker2_leer
_DB1

Vora-Shop
Trend-Shop

DB100236.zip
V60NDB10236.zip

19.08.2015

BR 189 MRCE / TXL Bayernhafen Gruppe



MRCE_TXL_189-281-EpVI_DB1-SK2

Vora-Shop
Trend-Shop

DB100235.zip
V60NDB10235.zip

19.08.2015

BR 189 MRCE / SBB



MRCE_SBB_189-082-EpVI_DB1-SK2



MRCE_SBB_189-107-EpVI_DB1-SK2



MRCE_SBB_189-112-EpVI_DB1-SK2



MRCE_SBB_189-282-EpVI_DB1-SK2

Vora-Shop
Trend-Shop

DB100234.zip
V60NDB10234.zip

19.08.2015

BR 189 MRCE / RTB European Gateway Services



MRCE_RTB_189-103-EpVI_DB1-SK2



MRCE_RTB_189-285-EpVI_DB1-SK2

Vora-Shop
Trend-Shop

DB100233.zip
V60NDB10233.zip

17.08.2015

Dampflokomotive DR 52-3549-4



DR_52_3549-4_HB1



DR_Tender_52_3549-4_HB1

Vora-Shop
Trend-Shop

HB100113.zip
V60NHB10113.zip

09.08.2015

Kleine Dorfkapelle ("Danke Schön"-Modell für die GeburtstagsgrüÙe)



Dorfkapelle_3_JE2



Dorfkapelle_3_Wi_JE2

Vora-Shop

JE2FR056.zip

06.08.2015

Kompaktlimousine aus Frankreich



Citro_C4_A



Citro_C4_A_im



Citro_C4_B



Citro_C4_B_im



Citro_C4_C



Citro_C4_C_im



Citro_C4_D



Citro_C4_D_im

Vora-Shop
Trend-Shop

FF100071.zip
V60NFF10071.zip

04.08.2015

Zweiteilige Taschenträger Typ Sdggmrs Kombi Verkehr



Kombi_Sdggmrs-A-Lad01_DB1



Kombi_Sdggmrs-B-Lad01_DB1



Kombi_Sdggmrs-A-Lad02_DB1



Kombi_Sdggmrs-B-Lad02_DB1



Kombi_Sdggmrs-A-Lad03_DB1



Kombi_Sdggmrs-B-Lad03_DB1



Kombi_Sdggmrs-A-Lad04_DB1



Kombi_Sdggmrs-B-Lad04_DB1



Kombi_Sdggmrs-A-Lad05_DB1



Kombi_Sdggmrs-B-Lad05_DB1



Kombi_Sdggmrs-A-Lad06_DB1



Kombi_Sdggmrs-B-Lad06_DB1



Kombi_Sdggmrs-A-Lad07_DB1



Kombi_Sdggmrs-B-Lad07_DB1



Kombi_Sdggmrs-A-Lad08_DB1



Kombi_Sdggmrs-B-Lad08_DB1



Kombi_Sdggmrs-A-Lad09_DB1



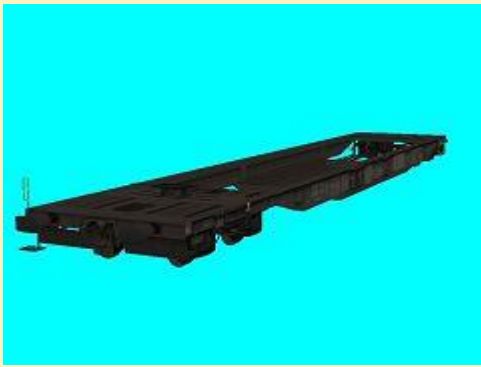
Kombi_Sdggmrs-B-Lad09_DB1



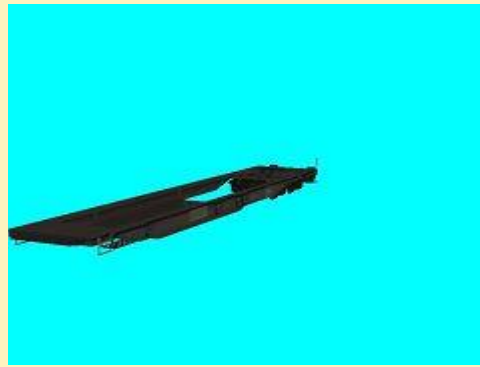
Kombi_Sdggmrs-A-Lad10_DB1



Kombi_Sdggmrs-B-Lad10_DB1



Kombi_Sdggmrs-A-leer_DB1



Kombi_Sdggmrs-B-leer_DB1

Vora-Shop
Trend-Shop

DB100232.zip
V60NDB10232.zip

04.08.2015

Zweiteilige Taschentragewagen Typ Sdggmrs Wascosa orange



Wascosa-01_Sdggmrs-A-Lad01_DB1



Wascosa-01_Sdggmrs-B-Lad01_DB1



Wascosa-01_Sdggmrs-A-Lad02_DB1



Wascosa-01_Sdggmrs-B-Lad02_DB1



Wascosa-01_Sdggmrs-A-Lad03_DB1



Wascosa-01_Sdggmrs-B-Lad03_DB1



Wascosa-01_Sdggmrs-A-
Lad04_DB1



Wascosa-01_Sdggmrs-B-
Lad04_DB1



Wascosa-01_Sdggmrs-A-
Lad05_DB1



Wascosa-01_Sdggmrs-B-
Lad05_DB1



Wascosa-01_Sdggmrs-A-
Lad06_DB1



Wascosa-01_Sdggmrs-B-
Lad06_DB1



Wascosa-01_Sdggmrs-A-
Lad07_DB1



Wascosa-01_Sdggmrs-B-
Lad07_DB1



Wascosa-01_Sdggmrs-A-Lad08_DB1



Wascosa-01_Sdggmrs-B-Lad08_DB1



Wascosa-01_Sdggmrs-A-Lad09_DB1



Wascosa-01_Sdggmrs-B-Lad09_DB1



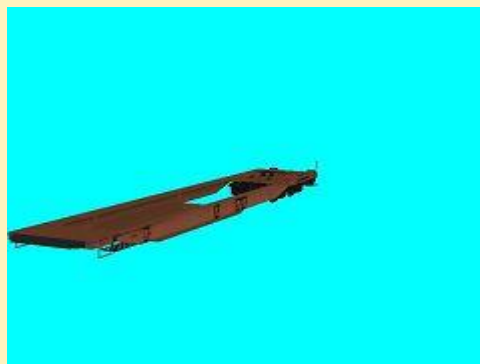
Wascosa-01_Sdggmrs-A-Lad10_DB1



Wascosa-01_Sdggmrs-B-Lad10_DB1



Wascosa-01_Sdggmrs-A-leer_DB1



Wascosa-01_Sdggmrs-B-leer_DB1

Vora-Shop
Trend-Shop

DB100231.zip
V60NDB10231.zip

04.08.2015

Zweiteilige Taschentragewagen Typ Sdggmrs Wascosa blau



Wascosa-02_Sdggmrs-A-
Lad01_DB1



Wascosa-02_Sdggmrs-B-
Lad01_DB1



Wascosa-02_Sdggmrs-A-
Lad02_DB1



Wascosa-02_Sdggmrs-B-
Lad02_DB1



Wascosa-02_Sdggmrs-A-
Lad03_DB1



Wascosa-02_Sdggmrs-B-
Lad03_DB1



Wascosa-02_Sdggmrs-A-
Lad04_DB1



Wascosa-02_Sdggmrs-B-
Lad04_DB1



Wascosa-02_Sdggmrs-A-
Lad05_DB1



Wascosa-02_Sdggmrs-B-
Lad05_DB1



Wascosa-02_Sdggmrs-A-
Lad06_DB1



Wascosa-02_Sdggmrs-B-
Lad06_DB1



Wascosa-02_Sdggmrs-A-
Lad07_DB1



Wascosa-02_Sdggmrs-B-
Lad07_DB1



Wascosa-02_Sdggmrs-A-
Lad08_DB1



Wascosa-02_Sdggmrs-B-
Lad08_DB1



Wascosa-02_Sdggmrs-A-
Lad09_DB1



Wascosa-02_Sdggmrs-B-
Lad09_DB1



Wascosa-02_Sdggmrs-A-
Lad10_DB1



Wascosa-02_Sdggmrs-B-
Lad10_DB1



Wascosa-02_Sdggmrs-A-leer_DB1



Wascosa-02_Sdggmrs-B-leer_DB1

Vora-Shop
Trend-Shop

DB100230.zip
V60NDB10230.zip