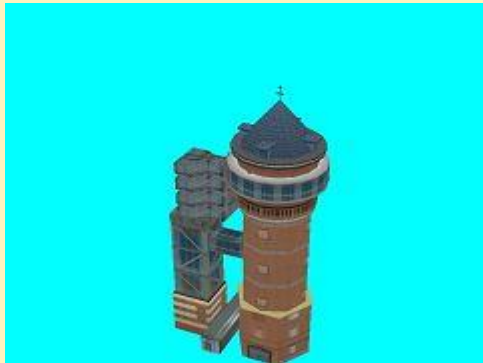


25.09.2015

Wassermuseum Aquarius



Wassermuseum-Aquarius_MK2

Vora-Shop

MK200066.zip

24.09.2015

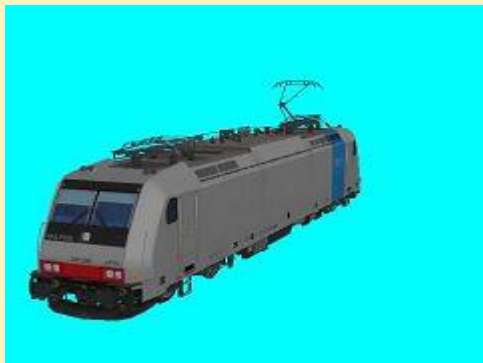
BR 186 Railpool Epoche VI Set 2



Railpool_186-141-EpVI_DB1_SK2



Railpool_186-271-EpVI_DB1_SK2



Railpool_186-286-EpVI_DB1_SK2



Railpool_186-290-EpVI_DB1_SK2

Vora-Shop

DB100242.zip

Trend-Shop

V60NDB10242.zip

24.09.2015

BR 186 Railpool Epoche VI Set 1



Railpool_186-103-EpVI_DB1_SK2



Railpool_186-105-EpVI_DB1_SK2



Railpool_186-108-EpVI_DB1_SK2



Railpool_186-251-EpVI_DB1_SK2

Vora-Shop
Trend-Shop

DB100241.zip
V60NDB10241.zip

23.09.2015

Dampflokomotive DR 52-8178-7



DR_52_8178-7_HB1



DR_Tender_52_8178-7_HB1

Vora-Shop
Trend-Shop

HB100114.zip
V60NHB10114.zip

23.09.2015

Verkehrsschutzeinrichtungen

Landschaftselemente:



Baumscheibe1_MS4



Baumscheibe2_MS4

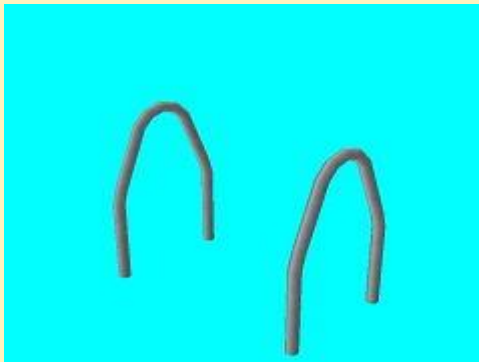


Baumscheibe3_MS4

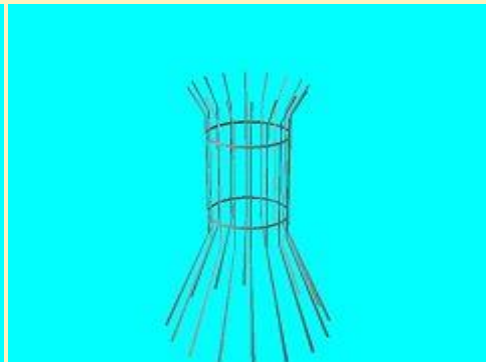
Immobilien:



Baumschutzbügel_MS4



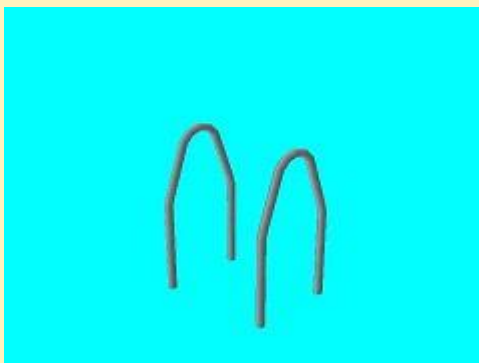
Baumschutzbügel-2fach_MS4



Baumschutzgitter_MS4



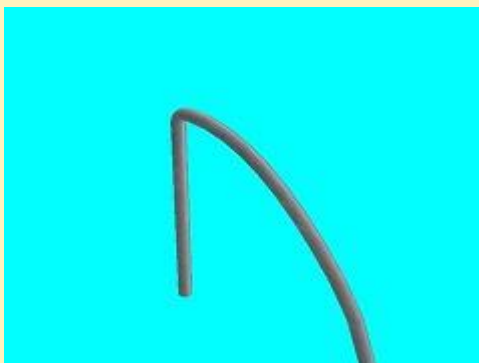
Baumschutzbügel-klein_MS4



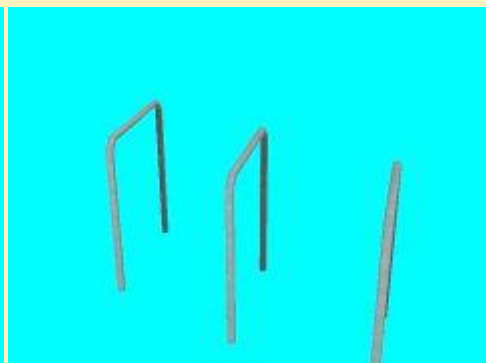
Baumschutzbügel-klein-2fach_MS4



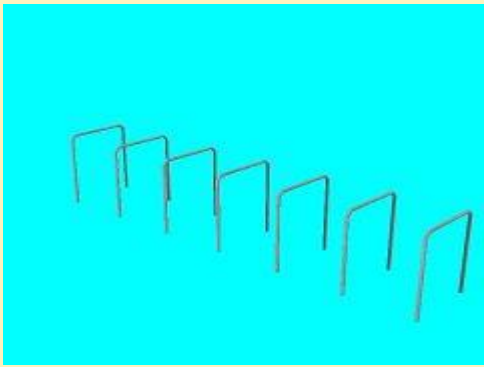
Fahrradbügel_MS4



Fahrradbügel-rund MS4



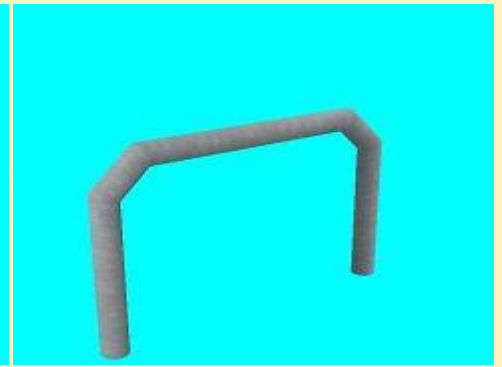
Fahrradstation_3er_MS44



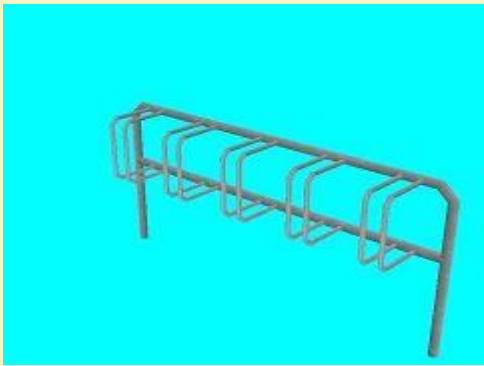
Fahrradstation_MS4



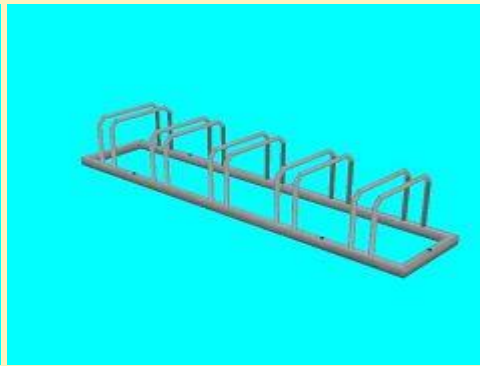
Fahrradstation-klein_MS4



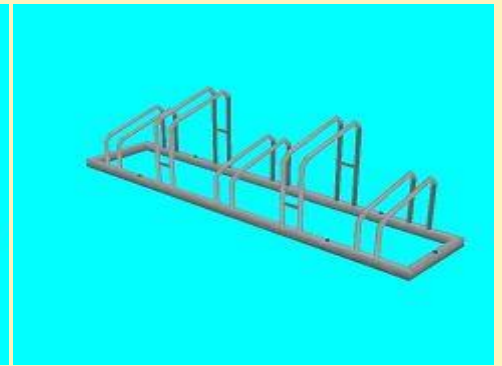
Rammschutzbügel_MS4



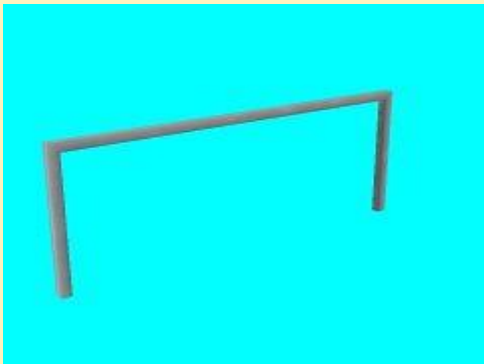
Fahrradstaender1_MS4



Fahrradstaender2_MS4



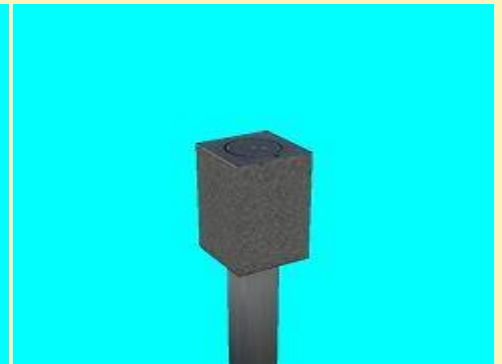
Fahrradstaender3_MS4f



Sperrbügel(Rabattengeländer)_MS4

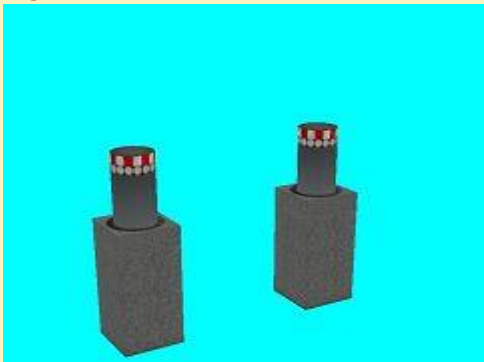


Hydraulikpoller1_MS4

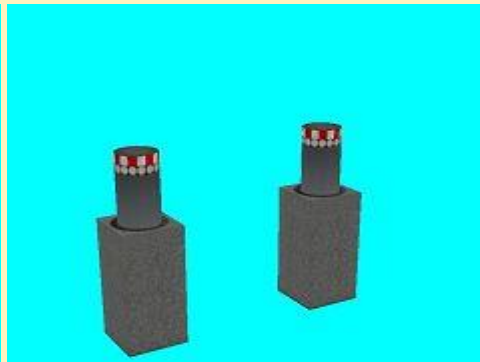


Hydraulikpoller2_MS4

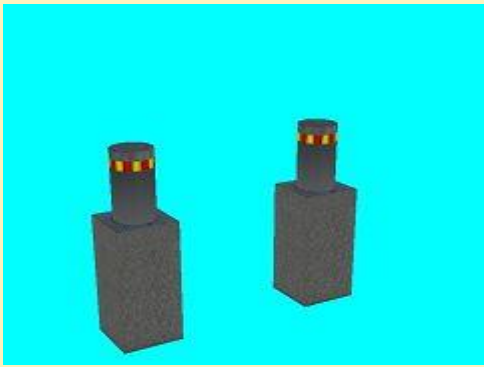
Signale:



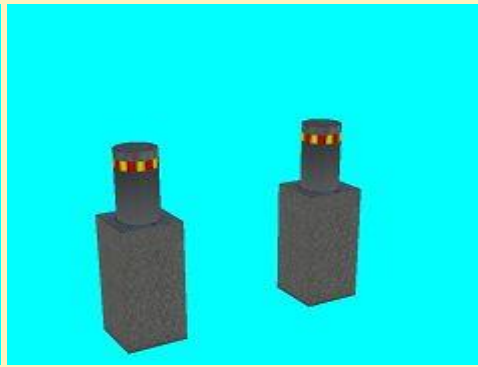
Hydraulikpoller1S2_MS4



Hydraulikpoller1S3_MS4



Hydraulikpoller2S2_MS4



Hydraulikpoller2S3_MS4

Vora-Shop

Trend-Shop

MS400018.zip

V60NMS40006.zip

19.09.2015

KPEV - 3.Klasse Eilzugabteilwagen, C4 pr12 - Set 2



KPEV-C4_pr12-Berlin_2357_HB4



KPEV-C4_pr12-Berlin_2360_HB4

Vora-Shop

Trend-Shop

HB400061.zip

V60NHB40061.zip

19.09.2015

KPEV - 3.Klasse Eilzugabteilwagen, C4 pr03 - Set 2



KPEV-C4_pr03-Berlin_2772_HB4



KPEV-C4_pr03-Berlin_2774_HB4

Vora-Shop

Trend-Shop

HB400060.zip

V60NHB40060.zip

19.09.2015

KPEV - 2./3.Klasse Eilzugabteilwagen, BC4 pr05 - Set 2



KPEV-BC4_pr05-Berlin_282_HB4



KPEV-BC4_pr05-Berlin_283_HB4

Vora-Shop
Trend-Shop

HB400059.zip
V60NHB40059.zip

19.09.2015

KPEV - Eilzug-Gepäckwagen, Pw4 pr04 - Set 2



KPEV-Pw4_pr04-Berlin_3103_HB4



KPEV-Pw4_pr04-Berlin_3300_HB4

Vora-Shop
Trend-Shop

HB400058.zip
V60NHB40058.zip

17.09.2015

KPEV - Güterwagen, "G" nach Blatt 8 von 1878 und "GI" nach Musterblatt Iib1 von 1889 (Sommeraktion 2015)

Dieses Set ist eine Ergänzung zu den Shopsets HB40050-57 bzw. V60NHB40050-57.

Es ist beim Kon per Mailanfrage erhältlich - [blitzbub\(at\)web.de](mailto:blitzbub(at)web.de)

Die Aktion ist zeitlich nicht befristet!



KPEV-G-1878-Mainz-15002_HB4



KPEV-G-1878-Mainz-15038_HB4



KPEV-G-1878-Mainz-15060_HB4



KPEV-G-1878-Mainz-15160_HB4



KPEV-G-1878-Mainz-15202_HB4



KPEV-G-1878-Mainz-15373_HB4



KPEV-G-1878-Mainz-15520_HB4



KPEV-G-1878-Mainz-15578_HB4



KPEV-G-1878-Mainz-15654_HB4



KPEV-G-1878-Mainz-16038_HB4



KPEV-G-1878-Mainz-16160_HB4



KPEV-G-1878-Mainz-16228_HB4



KPEV-G-1878-Mainz-16278_HB4



KPEV-G-1878-Mainz-16373_HB4



KPEV-G-1878-Mainz-16397_HB4



KPEV-G-1878-Mainz-16520_HB4



KPEV-G-1878-Mainz-16578_HB4



KPEV-G-1878-Mainz-16654_HB4



KPEV-GI-1889-Mainz-8084_HB4



KPEV-GI-1889-Mainz-8122_HB4



KPEV-GI-1889-Mainz-8198_HB4



KPEV-GI-1889-Mainz-8320_HB4



KPEV-GI-1889-Mainz-8412_HB4



KPEV-GI-1889-Mainz-8438_HB4



KPEV-GI-1889-Mainz-8490_HB4



KPEV-GI-1889-Mainz-8524_HB4



KPEV-GI-1889-Mainz-8763_HB4



KPEV-GI-1889-Mainz-9178_HB4



KPEV-GI-1889-Mainz-9236_HB4



KPEV-GI-1889-Mainz-9334_HB4



KPEV-GI-1889-Mainz-9426_HB4



KPEV-GI-1889-Mainz-9529_HB4



KPEV-GI-1889-Mainz-9600_HB4



KPEV-GI-1889-Mainz-9825_HB4



KPEV-GI-1889-Mainz-9928_HB4



KPEV-GI-1889-Mainz-9998_HB4

HB 4

Sommer-2015_HB4.zip

10.09.2015

KPEV - Güterwagen, "GI" nach Musterblatt Iib1 von 1889 - Set 4



KPEV-GI-1889-Berlin-9002_HB4



KPEV-GI-1889-Berlin-9202_HB4



KPEV-GI-1889-Berlin-9278_HB4



KPEV-GI-1889-Berlin-9438_HB4



KPEV-GI-1889-Coeln-9060_HB4



KPEV-GI-1889-Coeln-9228_HB4



KPEV-GI-1889-Coeln-9763_HB4



KPEV-GI-1889-Coeln-9928_HB4



KPEV-GI-1889-Halle-9397_HB4



KPEV-GI-1889-Halle-9524_HB4



KPEV-GI-1889-Halle-9825_HB4



KPEV-GI-1889-Halle-9998_HB4

Vora-Shop
Trend-Shop

HB400057.zip
V60NHB40057.zip

10.09.2015

KPEV - Güterwagen, "GI" nach Musterblatt IIb1 von 1889 - Set 3



KPEV-GI-1889-Berlin-8002_HB4



KPEV-GI-1889-Berlin-8228_HB4



KPEV-GI-1889-Berlin-8438_HB4



KPEV-GI-1889-Berlin-8825_HB4



KPEV-GI-1889-Coeln-8060_HB4



KPEV-GI-1889-Coeln-8278_HB4



KPEV-GI-1889-Coeln-8524_HB4



KPEV-GI-1889-Coeln-8928_HB4



KPEV-GI-1889-Halle-8202_HB4



KPEV-GI-1889-Halle-8397_HB4



KPEV-GI-1889-Halle-8763_HB4



KPEV-GI-1889-Halle-8998_HB4

Vora-Shop

Trend-Shop

HB400056.zip

V60NHB40056.zip

10.09.2015

KPEV - Güterwagen, "GI" nach Musterblatt IIb1 von 1889 - Set 2



KPEV-GI-1889-Berlin-9160_HB4



KPEV-GI-1889-Berlin-9560_HB4



KPEV-GI-1889-Berlin-9768_HB4



KPEV-GI-1889-Breslau-9426_HB4



KPEV-GI-1889-Breslau-9646_HB4



KPEV-GI-1889-Breslau-9958_HB4



KPEV-GI-1889-Koenigsberg-9274_HB4



KPEV-GI-1889-Koenigsberg-9529_HB4



KPEV-GI-1889-Koenigsberg-9768_HB4



KPEV-GI-1889-Magdeburg-9440
_HB4



KPEV-GI-1889-Magdeburg-9480
_HB4



KPEV-GI-1889-Magdeburg-9886
_HB4

Vora-Shop
Trend-Shop

HB400055.zip
V60NHB40055.zip

10.09.2015

KPEV - Güterwagen, "GI" nach Musterblatt IiB1 von 1889 - Set 1



KPEV-GI-1889-Berlin-8084_HB4



KPEV-GI-1889-Berlin-8350_HB4



KPEV-GI-1889-Berlin-8520_HB4



KPEV-GI-1889-Breslau-8119_HB4



KPEV-GI-1889-Breslau-8388_HB4



KPEV-GI-1889-Breslau-8922_HB4



KPEV-GI-1889-Koenigsberg-8451
_HB4



KPEV-GI-1889-Koenigsberg-8685
_HB4



KPEV-GI-1889-Koenigsberg-8802
_HB4



KPEV-GI-1889-Magdeburg-8217
_HB4



KPEV-GI-1889-Magdeburg-8400
_HB4



KPEV-GI-1889-Magdeburg-8502
_HB4

Vora-Shop

Trend-Shop

HB400054.zip

V60NHB40054.zip

10.09.2015

KPEV - Güterwagen, "G" nach Blatt 8 von 1878 - Set 4



KPEV-G-1878-Berlin-16202_HB4



KPEV-G-1878-Berlin-16397_HB4



KPEV-G-1878-Berlin-16763_HB4



KPEV-G-1878-Berlin-16998_HB4



KPEV-G-1878-Coeln-16060_HB4



KPEV-G-1878-Coeln-16278_HB4



KPEV-G-1878-Coeln-16524_HB4



KPEV-G-1878-Coeln-16928_HB4



KPEV-G-1878-Halle-16002_HB4



KPEV-G-1878-Halle-16228_HB4



KPEV-G-1878-Halle-16438_HB4



KPEV-G-1878-Halle-16825_HB4

Vora-Shop
Trend-Shop

HB400053.zip
V60NHB40053.zip

10.09.2015

KPEV - Güterwagen, "G" nach Blatt 8 von 1878 - Set 3



KPEV-G-1878-Berlin-15002_HB4



KPEV-G-1878-Berlin-15228_HB4



KPEV-G-1878-Berlin-15438_HB4



KPEV-G-1878-Berlin-15825_HB4



KPEV-G-1878-Coeln-15060_HB4



KPEV-G-1878-Coeln-15278_HB4



KPEV-G-1878-Coeln-15524_HB4



KPEV-G-1878-Coeln-15928_HB4



KPEV-G-1878-Halle-15202_HB4



KPEV-G-1878-Halle-15397_HB4



KPEV-G-1878-Halle-15763_HB4



KPEV-G-1878-Halle-15998_HB4

Vora-Shop
Trend-Shop

HB400052.zip
V60NHB40052.zip

10.09.2015

KPEV - Güterwagen, "G" nach Blatt 8 von 1878 - Set 2



KPEV-G-1878-Berlin-16084_HB4



KPEV-G-1878-Berlin-16600_HB4



KPEV-G-1878-Berlin-16922_HB4



KPEV-G-1878-Breslau-16139_HB4



KPEV-G-1878-Breslau-16256_HB4



KPEV-G-1878-Breslau-16520_HB4



KPEV-G-1878-Koenigsberg-16373_HB4



KPEV-G-1878-Koenigsberg-16412_HB4



KPEV-G-1878-Koenigsberg-16886_HB4



KPEV-G-1878-Magdeburg-16119
_HB4



KPEV-G-1878-Magdeburg-16568
_HB4



KPEV-G-1878-Magdeburg-16680
_HB4

Vora-Shop
Trend-Shop

HB400051.zip
V60NHB40051.zip

10.09.2015

KPEV - Güterwagen, "G" nach Blatt 8 von 1878 - Set 1



KPEV-G-1878-Berlin-15008_HB4



KPEV-G-1878-Berlin-15720_HB4



KPEV-G-1878-Berlin-15958_HB4



KPEV-G-1878-Breslau-15035_HB4



KPEV-G-1878-Breslau-15198_HB4



KPEV-G-1878-Breslau-15295_HB4



KPEV-G-1878-Koenigsberg-15079
_HB4



KPEV-G-1878-Koenigsberg-15158
_HB4



KPEV-G-1878-Koenigsberg-15312
_HB4



KPEV-G-1878-Magdeburg-15046
_HB4



KPEV-G-1878-Magdeburg-15122
_HB4



KPEV-G-1878-Magdeburg-15388
_HB4

Vora-Shop
Trend-Shop

HB400050.zip
V60NHB40050.zip

09.09.2015

Torfstapel



Torfstapel_BH1

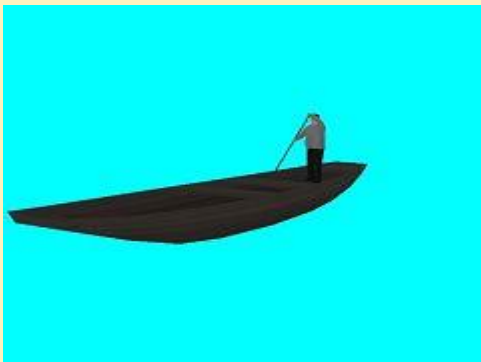
FKG

Torfstapel_BH1.zip

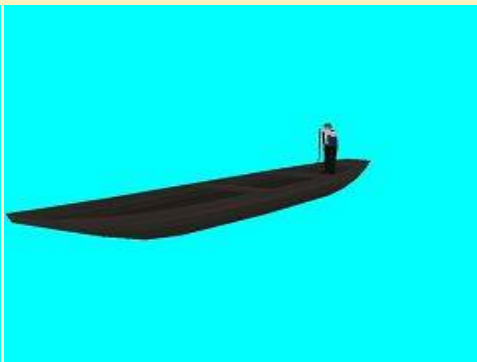
09.09.2015

Kähne Set

Rollmaterial:



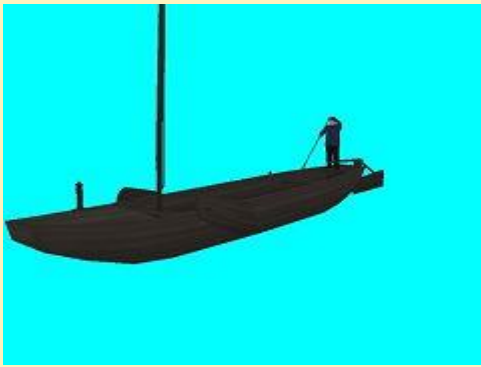
Fischerkahn-gestakt_BH1



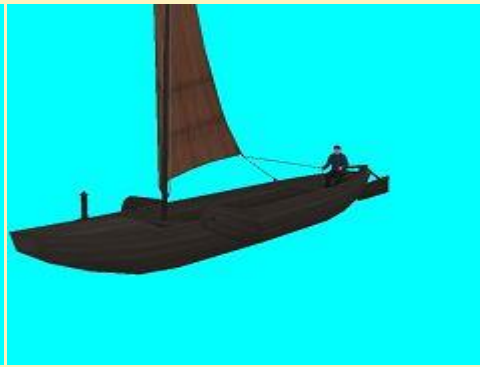
Spreewaldkahn-gestakt_BH1



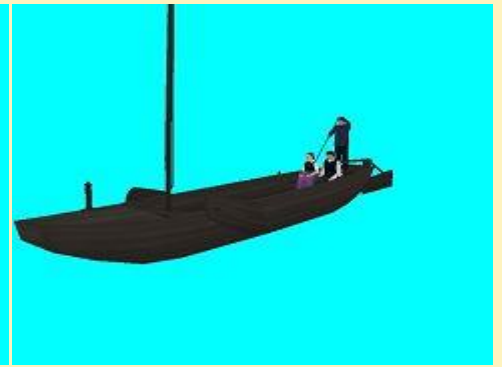
Spreewaldkahn-Pass-gestakt_BH1



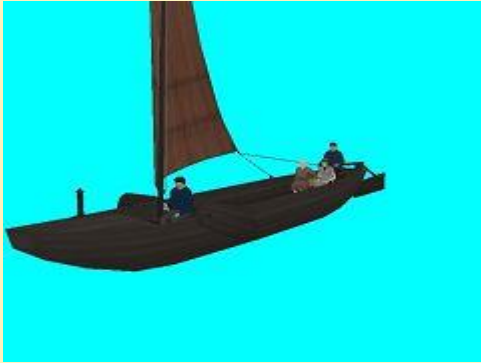
Torfkahn-gestakt_BH1



Torfkahn-mit-Segel_BH1

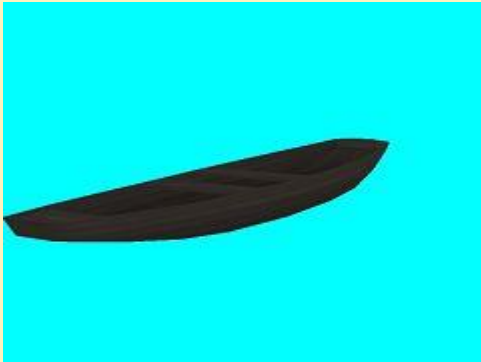


Torfkahn-Pass-gestakt_BH1

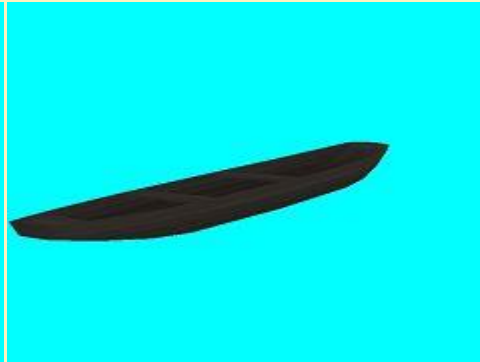


Torfkahn-Pass-mit-Segel_BH1

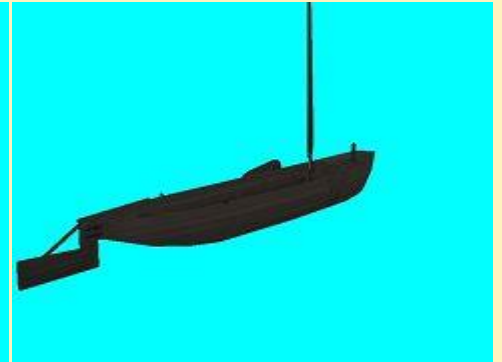
Immobilien:



Fischerkahn_IM_BH1



Spreewaldkahn_IM_BH1



Torfkahn_IM_BH1

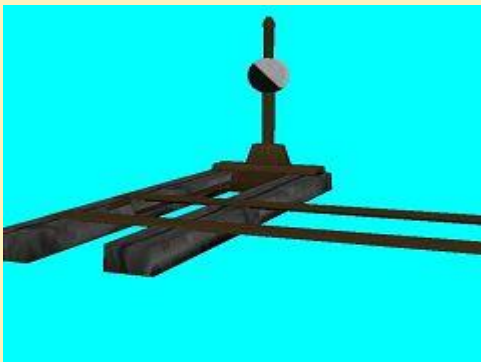
Vora-Shop

BH100256.zip

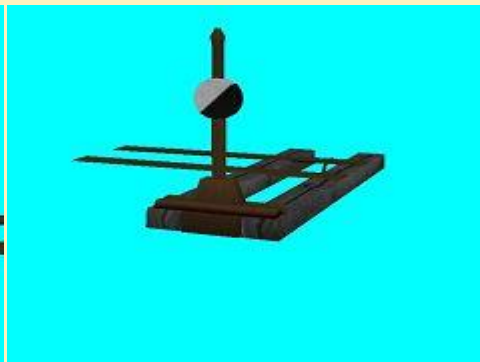
05.09.2015

Splinelieferung (hohe ID-Nummern, ab EEP6.1 verwendbar)

Neben 20 Splines aus verschiedenen Bereichen werden folgende Modelle für 600mm-Feldbahnen geliefert:



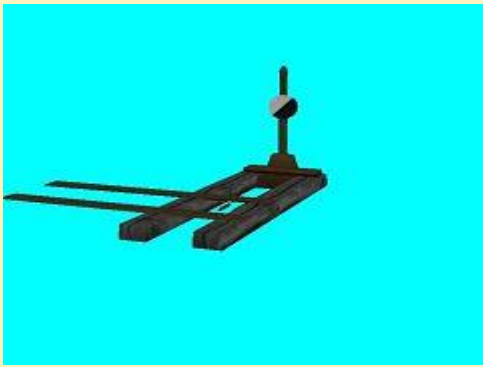
Stellhebel_Ho_I_WL_600_pw1



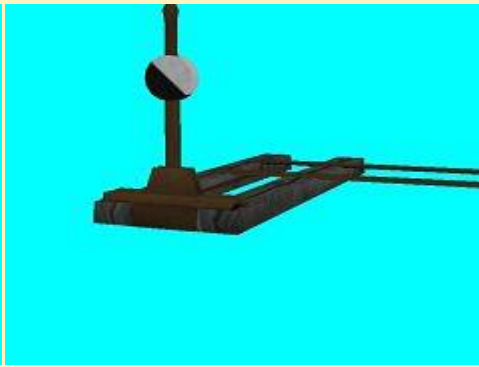
Stellhebel_Ho_I_WR_600_pw1



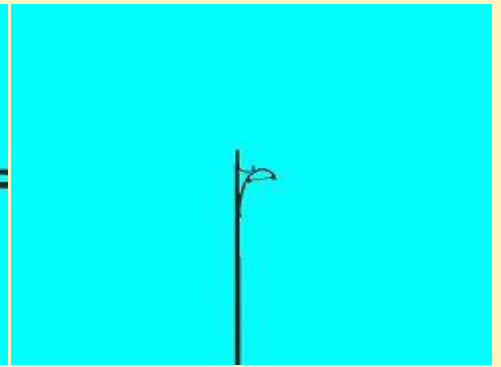
Feldeb_600_Mast1_mi-150-150_pw1



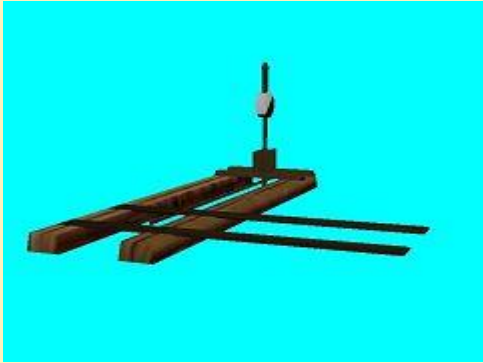
Stellhebel_Ho_r_WL_600_pw1



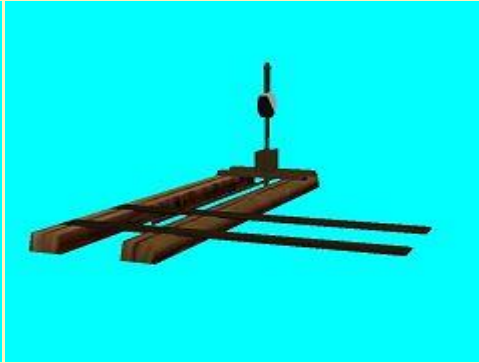
Stellhebel_Ho_r_WR_600_pw1



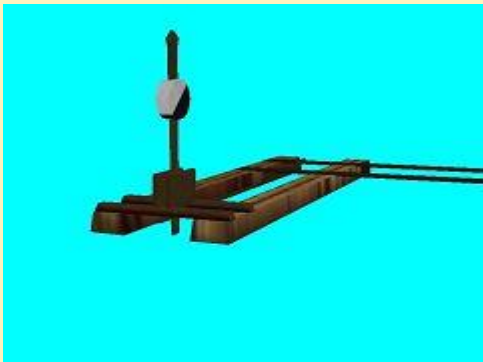
Feldb_600_Mast1_re-150_pw1



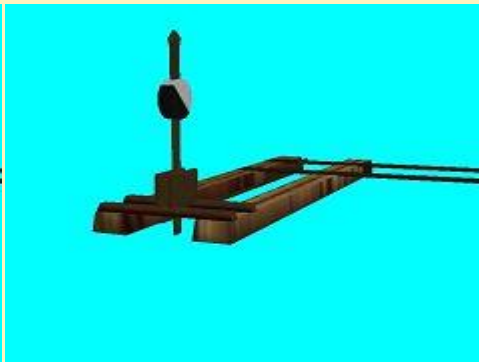
Stellhebel_St_l_WL_600_pw1



Stellhebel_St_l_WR_600_pw1



Stellhebel_St_r_WL_600_pw1



Stellhebel_St_r_WR_600_pw1

Vora-Shop

pw1fr022.zip

05.09.2015

AEG L 21 / L 22



AEG_Lok_21_3075_pw1



AEG_Lok_22_3076_pw1

Vora-Shop

PW100059.zip

03.09.2015

Diesellokomotivenset ÖBB 2050



OBB_2050-11_FF1



OBB_2050-16_FF1

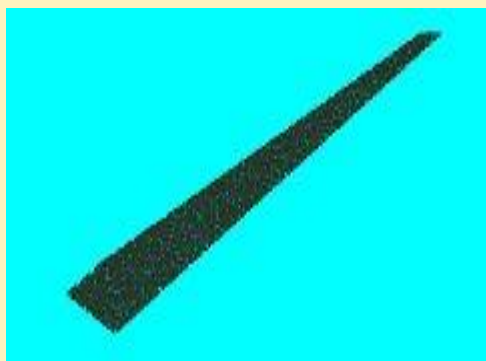
Vora-Shop
Trend-Shop

FF100073.zip
V60NFF10073.zip

02.09.2015

Hafen-Flusswasser_BH1

Enthalten sind zwei Wasserplatten von Bernt Hoppe sowie ein passender Spline (offizielle ID) von Volkhard Ramsenthaler.



Wasser_100x50_oliv_BH1



Wasser_100x100_oliv_BH1

Vora-Shop

BH1Fr003.zip