

25.02.2016

Wagnergraben-Viadukt

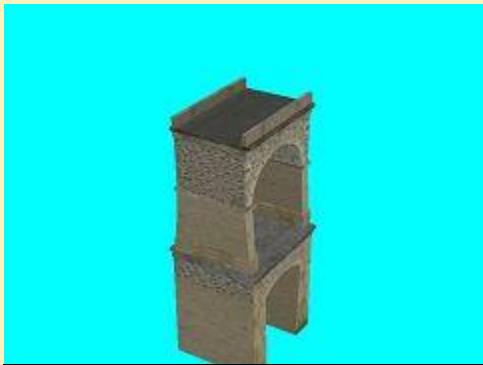
Gleisobjekte:



WagnergrViad_B_Bog_HB1



WagnergrViad_B_GM_HB1

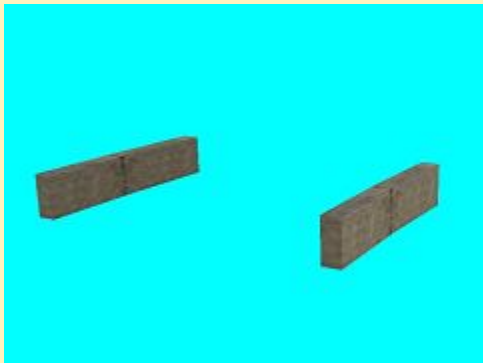


WagnergrViad_G_Bog_HB1

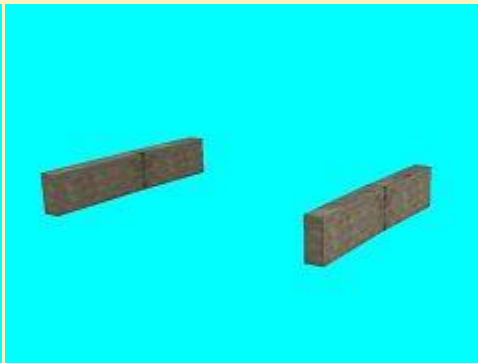


WagnergrViad_G_GM_HB1

Immobilien:



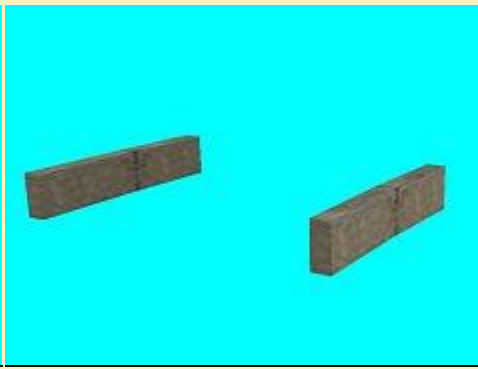
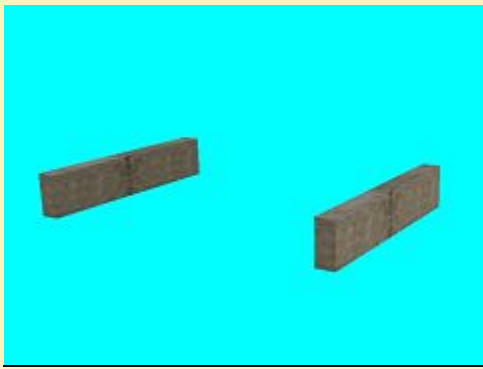
WagnergrViad_B_GM-BrLi_HB1



WagnergrViad_B_GM-BrRe_HB1



SemmeringViad_OL-Masten_HB1



WagnergrViad_G_GM-BrLi_HB1

WagnergrViad_G_GM-BrRe_HB1

Vora-Shop
Trend-Shop

HB100116.zip
V60NHB10116.zip

22.02.2016

"Österreichisches Krokodil" ÖBB 1189.02 (Freemodell)



OBB_1189-02

Vora-Shop

ff1fr014.zip

19.02.2016

DB-Hilfsbauzug Set



DB_Kls443_Fuchs-301_BH1

DB_Kls443_Schotter_BH1

Vora-Shop

BH100265.zip

14.02.2016

FUCHS 301 mit hohem Fuehrerstand blau



Fuchs-301-h_2SG_blaue-FW_BH1

Fuchs-301-h_MSG_blaue-FW_BH1

Vora-Shop

BH100264.zip

10.02.2016

Containerwagen-Erweiterung AAE Sggmrs 104 Set 001 (Railcare)

Diese Ergänzung setzt zwingend die Installation des Shopsets DB100202 bzw. V60NDB10202 voraus.



AAE_Sggmrs-104-1A-Lad11_DB1

AAE_Sggmrs-104-1B-Lad11_DB1



AAE_Sggmrs-104-1A-Lad12_DB1

AAE_Sggmrs-104-1B-Lad12_DB1



AAE_Sggmrs-104-1A-Lad13_DB1

AAE_Sggmrs-104-1B-Lad13_DB1



AAE_Sggmrs-104-1A-Lad14_DB1

AAE_Sggmrs-104-1B-Lad14_DB1



AAE_Sggmrs-104-1A-Lad15_DB1

AAE_Sggmrs-104-1B-Lad15_DB1



AAE_Sggmrs-104-1A-Lad16_DB1

AAE_Sggmrs-104-1B-Lad16_DB1



AAE_Sggmrs-104-1A-Lad17_DB1

AAE_Sggmrs-104-1B-Lad17_DB1



AAE_Sggmrs-104-1A-Lad18_DB1

AAE_Sggmrs-104-1B-Lad18_DB1



AAE_Sggmrs-104-1A-Lad19_DB1

AAE_Sggmrs-104-1B-Lad19_DB1



AAE_Sggmrs-104-1A-Lad20_DB1

AAE_Sggmrs-104-1B-Lad20_DB1



AAE_Sggmrs-104-1A-Lad21_DB1

AAE_Sggmrs-104-1B-Lad21_DB1



AAE_Sggmrs-104-1A-Lad22_DB1

AAE_Sggmrs-104-1B-Lad22_DB1

DB 1

AAE-Sggmrs104-Erweiterung-001-Railcare.rar

08.02.2016

Wechselbrücken LKW ACTROS

Rollmaterial:



BDF_ACTROS_anthrazit_TM1

BDF_ACTROS_blau_TM1

BDF_ACTROS_gelb_TM1



BDF_ACTROS_gruen_TM1

BDF_ACTROS_orange_TM1

BDF_ACTROS_rot_TM1



BDF_ACTROS_weiss_TM1

Immobilien:



BDF_ACTROS_TM1_anthrazit_Stand

BDF_ACTROS_TM1_anthrazit_Stand
_WB_blau

BDF_ACTROS_TM1_anthrazit_Stand
_WB_gelb



BDF_ACTROS_TM1_anthrazit_Stand
_WB_grau

BDF_ACTROS_TM1_anthrazit_Stand
_WB_gruen

BDF_ACTROS_TM1_anthrazit_Stand
_WB_orange



BDF_ACTROS_TM1_anthrazit_Stand
_WB_rot

BDF_ACTROS_TM1_anthrazit_Stand
_WB_weiss



BDF_ACTROS_TM1_blau_Stand



BDF_ACTROS_TM1_blau_Stand
_WB_blau



BDF_ACTROS_TM1_blau_Stand
_WB_gelb



BDF_ACTROS_TM1_blau_Stand
_WB_grau



BDF_ACTROS_TM1_blau_Stand
_WB_gruen



BDF_ACTROS_TM1_blau_Stand
_WB_orange



BDF_ACTROS_TM1_blau_Stand
_WB_rot



BDF_ACTROS_TM1_blau_Stand
_WB_weiss



BDF_ACTROS_TM1_gelb_Stand



BDF_ACTROS_TM1_gelb_Stand
_WB_blau



BDF_ACTROS_TM1_gelb_Stand
_WB_gelb



BDF_ACTROS_TM1_gelb_Stand
_WB_grau



BDF_ACTROS_TM1_gelb_Stand
_WB_gruen



BDF_ACTROS_TM1_gelb_Stand
_WB_orange



BDF_ACTROS_TM1_gelb_Stand
_WB_rot



BDF_ACTROS_TM1_gelb_Stand
_WB_weiss



BDF_ACTROS_TM1_gruen_Stand



BDF_ACTROS_TM1_gruen_Stand
_WB_blau



BDF_ACTROS_TM1_gruen_Stand
_WB_gelb



BDF_ACTROS_TM1_gruen_Stand
_WB_grau



BDF_ACTROS_TM1_gruen_Stand
_WB_gruen



BDF_ACTROS_TM1_gruen_Stand
_WB_orange



BDF_ACTROS_TM1_gruen_Stand
_WB_rot



BDF_ACTROS_TM1_gruen_Stand
_WB_weiss



BDF_ACTROS_TM1_orange_Stand



BDF_ACTROS_TM1_orange_Stand
_WB_blau



BDF_ACTROS_TM1_orange_Stand
_WB_gelb



BDF_ACTROS_TM1_orange_Stand
_WB_grau



BDF_ACTROS_TM1_orange_Stand
_WB_gruen



BDF_ACTROS_TM1_orange_Stand
_WB_orange



BDF_ACTROS_TM1_orange_Stand
_WB_rot



BDF_ACTROS_TM1_orange_Stand
_WB_weiss



BDF_ACTROS_TM1_rot_Stand



BDF_ACTROS_TM1_rot_Stand
_WB_blau



BDF_ACTROS_TM1_rot_Stand
_WB_gelb



BDF_ACTROS_TM1_rot_Stand
_WB_grau



BDF_ACTROS_TM1_rot_Stand
_WB_gruen



BDF_ACTROS_TM1_rot_Stand
_WB_orange



BDF_ACTROS_TM1_rot_Stand
_WB_rot



BDF_ACTROS_TM1_rot_Stand
_WB_weiss



BDF_ACTROS_TM1_weiss_Stand



BDF_ACTROS_TM1_weiss_Stand
_WB_blau



BDF_ACTROS_TM1_weiss_Stand
_WB_gelb



BDF_ACTROS_TM1_weiss_Stand
_WB_grau



BDF_ACTROS_TM1_weiss_Stand
_WB_gruen



BDF_ACTROS_TM1_weiss_Stand
_WB_orange



BDF_ACTROS_TM1_weiss_Stand
_WB_rot



BDF_ACTROS_TM1_weiss_Stand
_WB_weiss

Vora-Shop
Trend-Shop

TM100006.zip
V60XTM11406.zip

08.02.2016

FUCHS-301 mit Zweischalengreifer blau



Fuchs-301_2SG_blau_BH1



Fuchs-301_2SG_blau-FW_BH1

Vora-Shop

BH100263.zip

04.02.2016

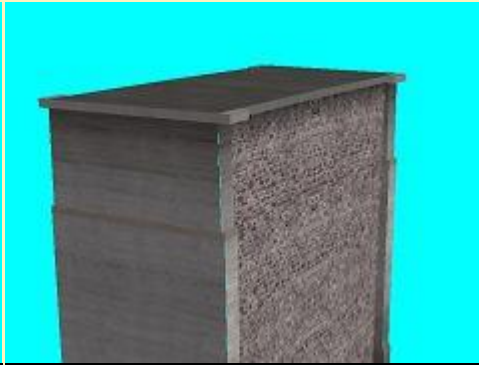
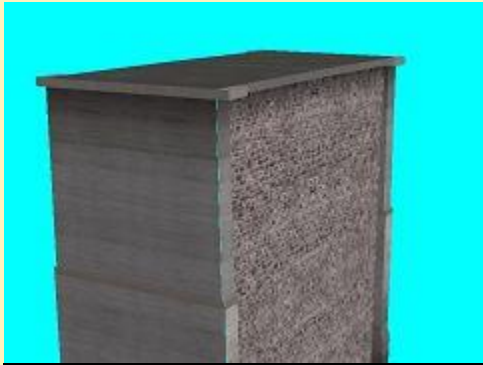
Hoellgraben-Viadukt

Gleisobjekte:



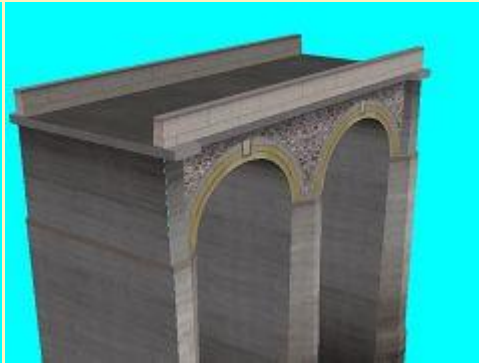
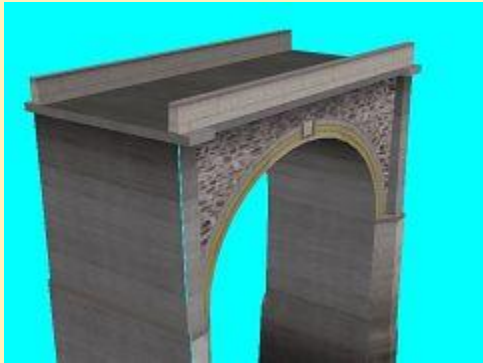
HoellgrabenViad_B_Bog_gr_HB1

HoellgrabenViad_B_Bog_kl_HB1



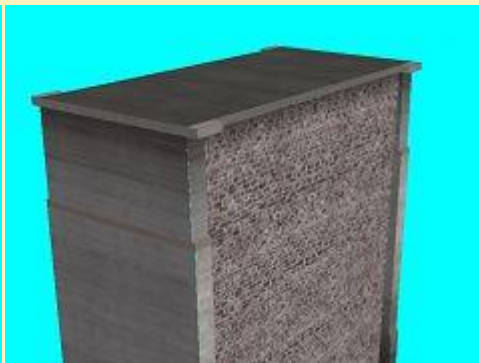
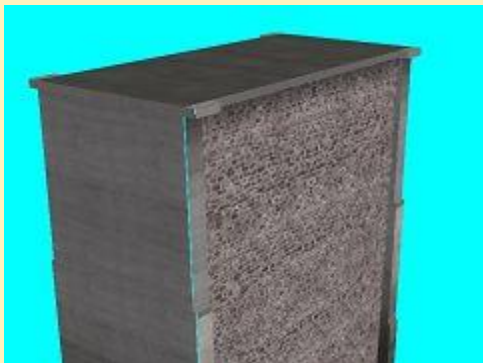
HoellgrabenViad_B_GMgr_HB1

HoellgrabenViad_B_GMkl_HB1



HoellgrabenViad_G_Bog_gr_HB1

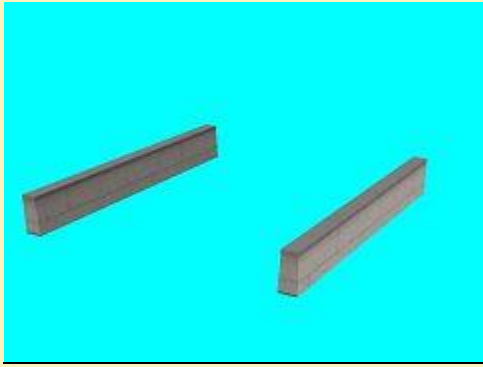
HoellgrabenViad_G_Bog_kl_HB1



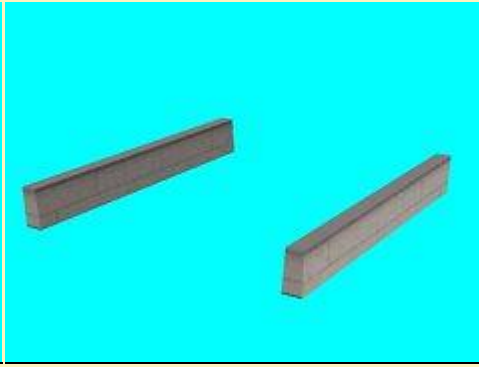
HoellgrabenViad_G_GMgr_HB1

HoellgrabenViad_G_GMkl_HB1

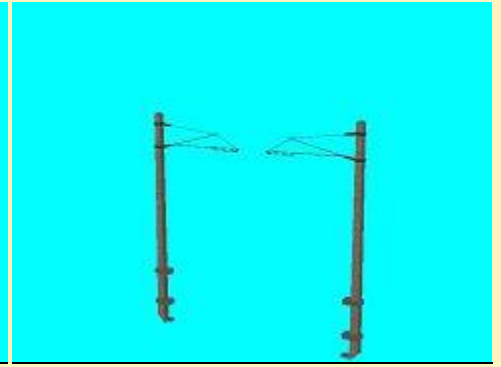
Immobilien:



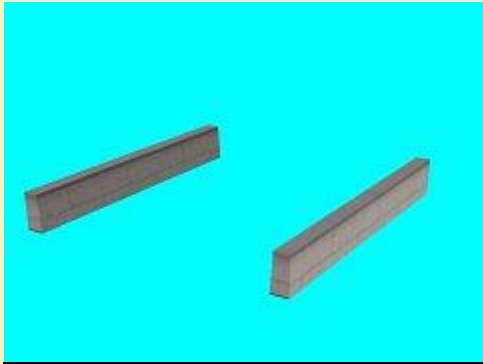
HoellgrabenViad_B_GM-BrLi_HB1



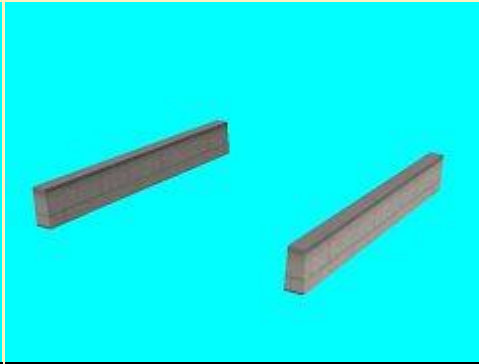
HoellgrabenViad_B_GM-BrRe_HB1



HoellgrabenViad_OL-Masten_HB1



HoellgrabenViad_G_GM-BrLi_HB1



HoellgrabenViad_G_GM-BrRe_HB1

Vora-Shop
Trend-Shop

HB100115.zip
V60NHB10115.zip

03.02.2016

Kuebgraben-Viadukt (Freemodell)

Gleisobjekte:



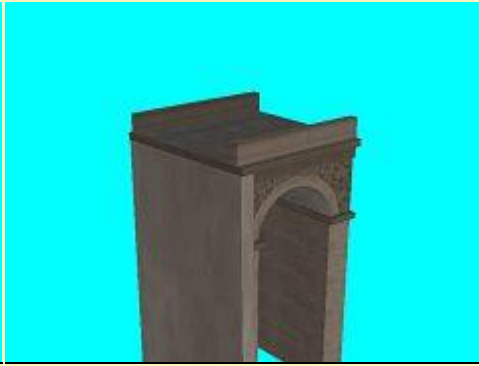
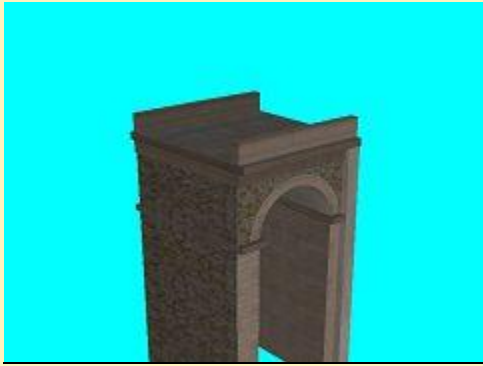
KuebgrabenViad_B_Bog_gr_HB1



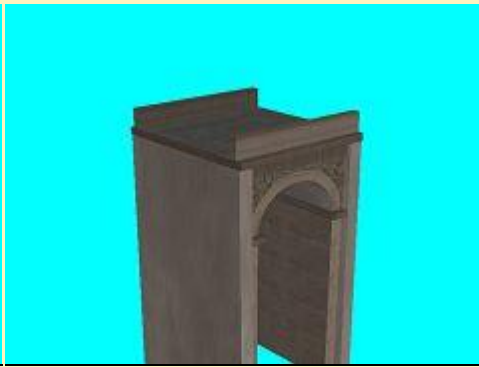
KuebgrabenViad_B_Bog_kl_HB1



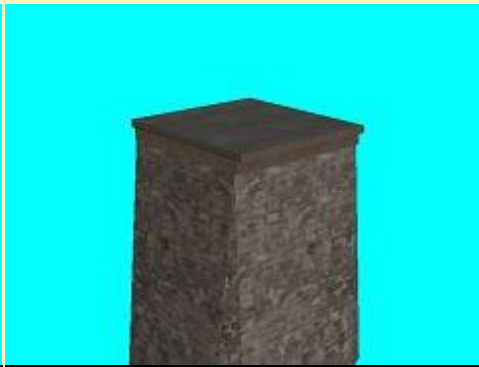
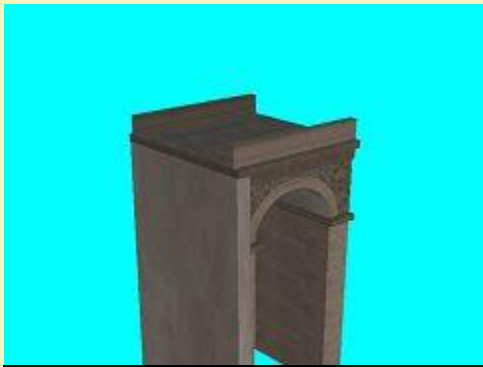
KuebgrabenViad_B_GM_HB1



KuebgrabenViad_B_Bog_RdLi_HB1 KuebgrabenViad_B_Bog_RdRe_HB1

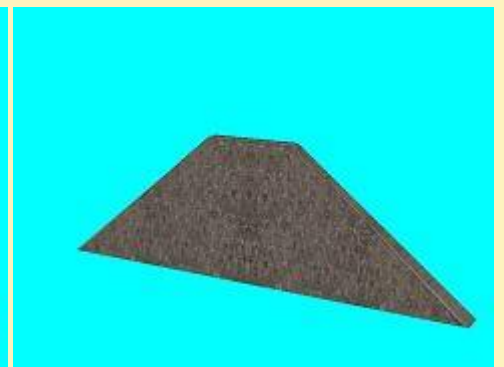
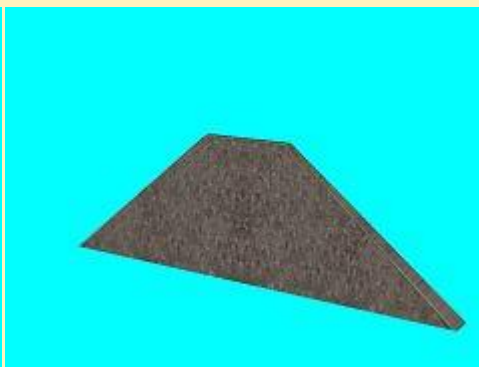
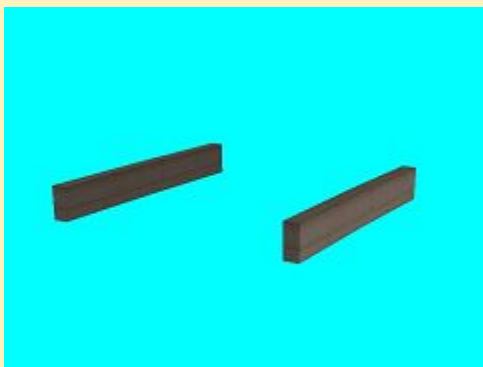


KuebgrabenViad_G_Bog_gr_HB1 KuebgrabenViad_G_Bog_kl_HB1 KuebgrabenViad_G_GM_HB1

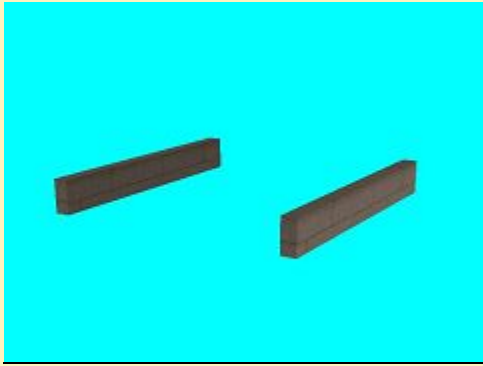


KuebgrabenViad_G_Bog_Rd_HB1 KuebgrabenViad_G_GM_HB1

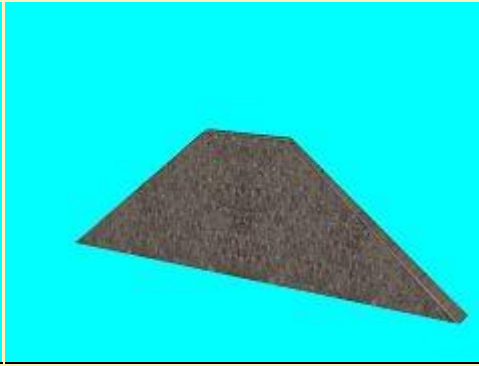
Immobilien:



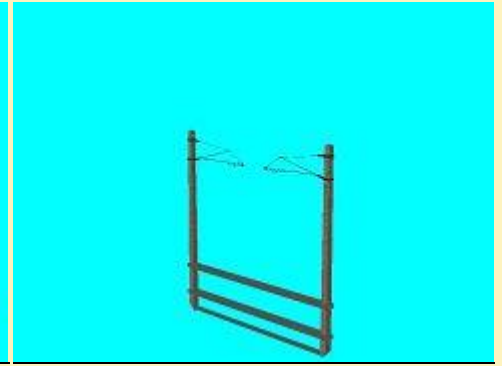
KuebgrabenViad_B_GM_Br_HB1 KuebgrabenViad_B_StM_Re_HB1 KuebgrabenViad_B_StM_Li_HB1



KuebgrabenViad_G_GM_Br_HB1



KuebgrabenViad_G_StM_HB1



SemmeringViad_OL-Masten_HB1

HB 1

hb1f045.zip

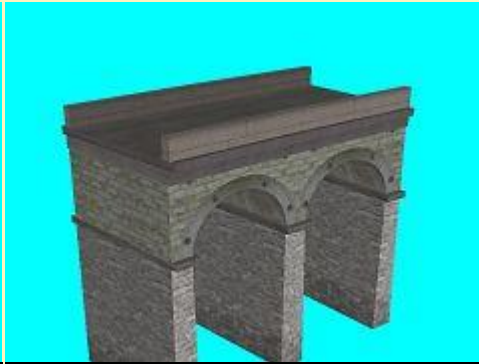
03.02.2016

Payerbachgraben-Viadukt (Freemodell)

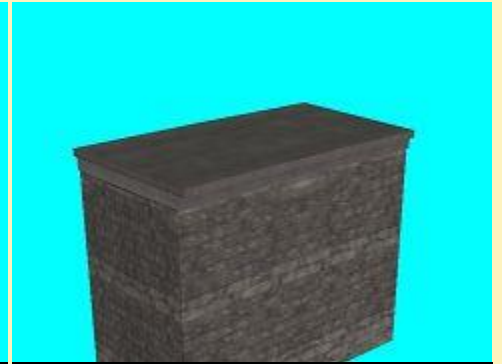
Gleisobjekte:



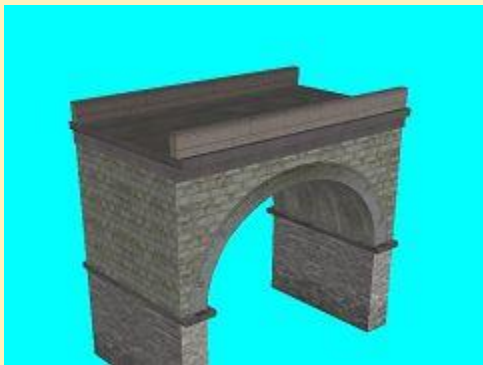
PayerbachgrViad_B_Bog_gr_HB1



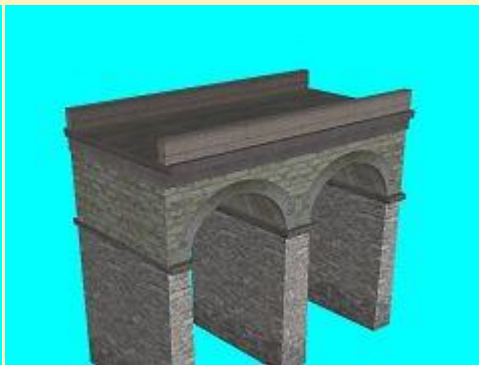
PayerbachgrViad_B_Bog_kl_HB1



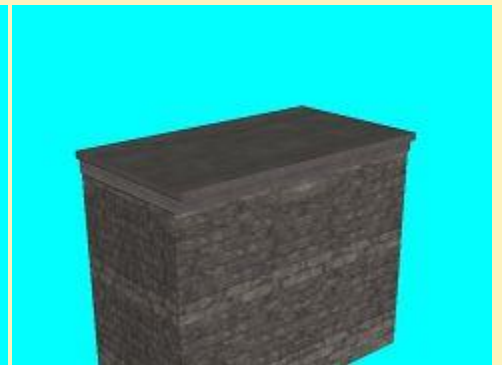
PayerbachgrViad_B_GM_HB1



PayerbachgrViad_G_Bog_gr_HB1

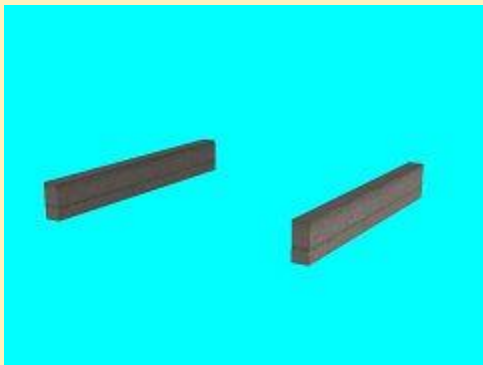


PayerbachgrViad_G_Bog_kl_HB1

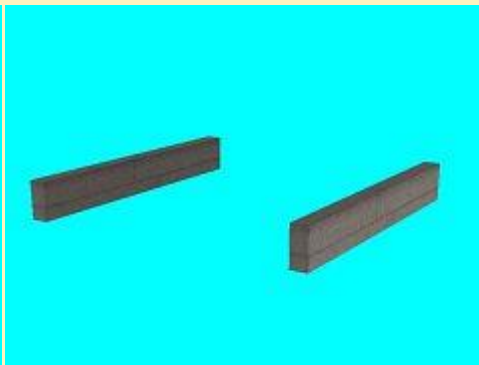


PayerbachgrViad_G_GM_HB1

Immobilien:



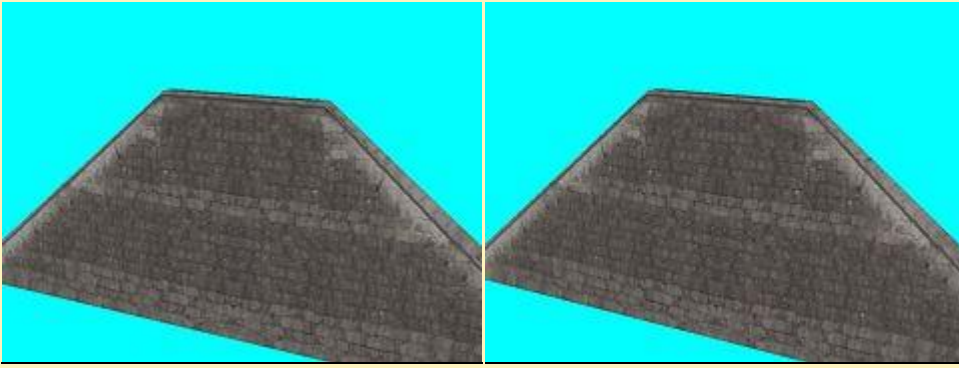
PayerbachgrViad_B_GM-BrLi_HB1



PayerbachgrViad_B_GM-BrRe_HB1

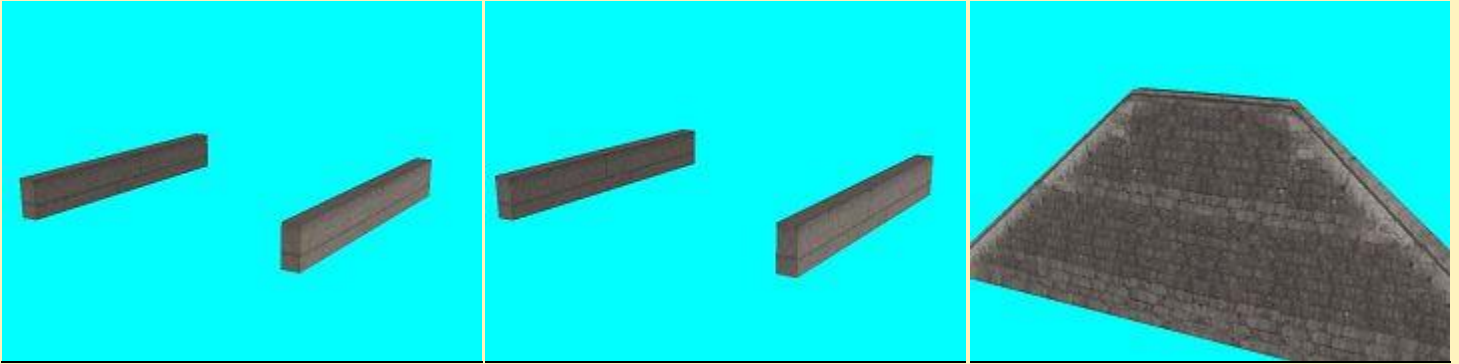


SemmeringViad_OL-Masten_HB1



PayerbachgrViad_B_StM_Li_HB1

PayerbachgrViad_B_StM_Re_HB1



PayerbachgrViad_G_GM-BrLi_HB1

PayerbachgrViad_G_GM-BrRe_HB1

PayerbachgrViad_G_StM_HB1

HB 1

hb1f044.zip