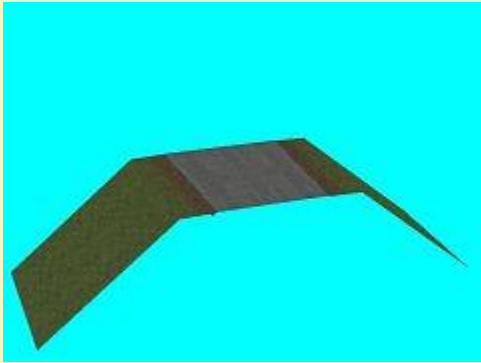


27.06.2016

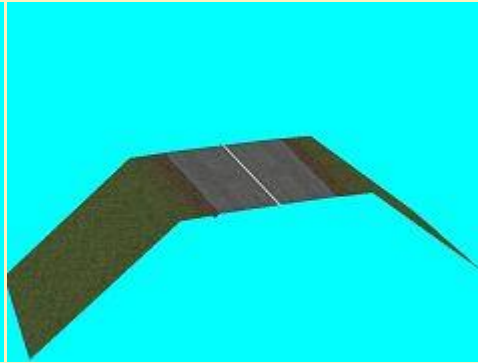
Gleisstil-Set Asphalt-Landstraßen mit Randstreifen

Neben den Modellen sind neun Splines (ID-Nrn. 3083 - 3087, 3501, 3502, 3509 und 3514) enthalten.

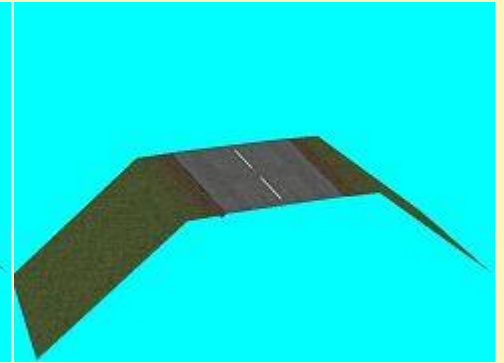
Gleisobjekte:



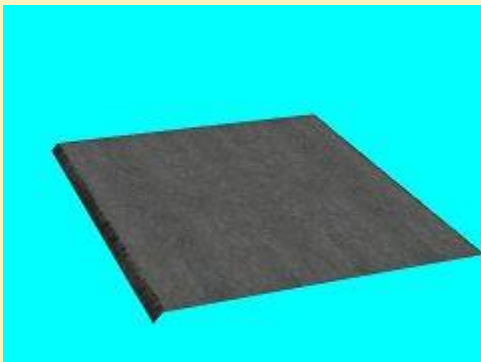
Bln_asph3_0_d_V_Str-Lstr_pw1



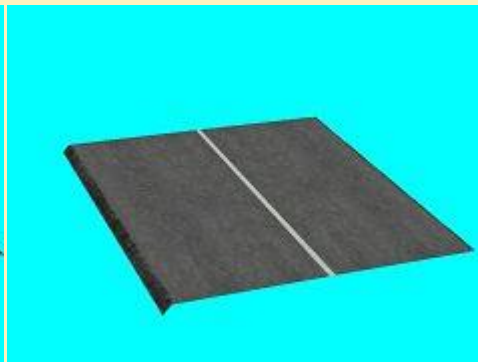
Bln_asph3_1_d_V_Str-Lstr_pw1



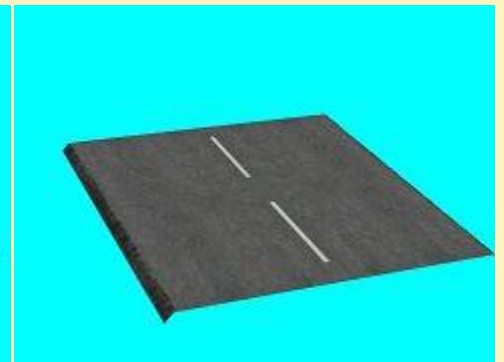
Bln_asph3_2_d_V_Str-Lstr_pw1



Bln_asph3_0_V_Str-Lstr_pw1



Bln_asph3_1_V_Str-Lstr_pw1



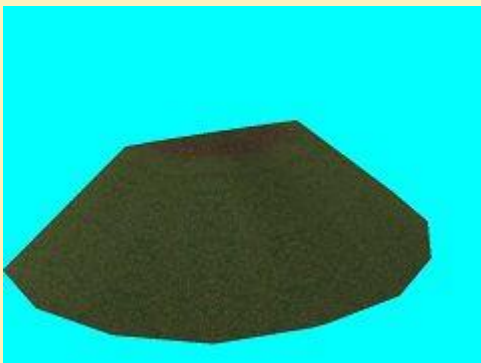
Bln_asph3_2_V_Str-Lstr_pw1



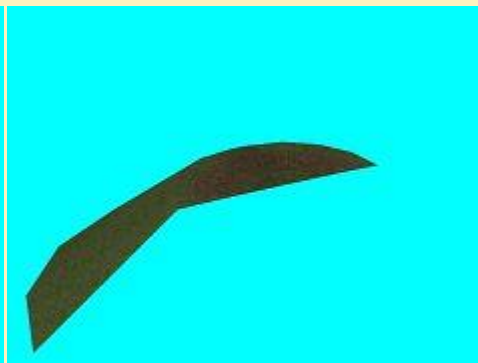
Bln_Damm1_L_Mau1_anf_pw1



Bln_Damm1_L_Mau1_end_pw1



Bln_Damm1_L_rund_anf_pw1



Bln_Damm1_L_rund_end_pw1

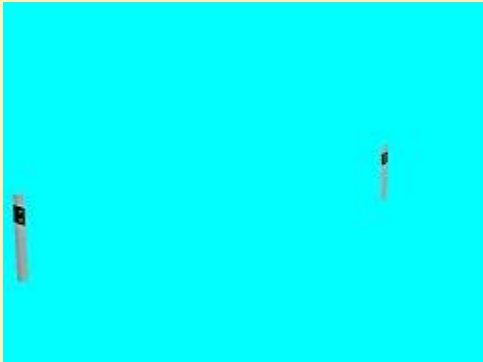


Leitplanke_Anf_pw1

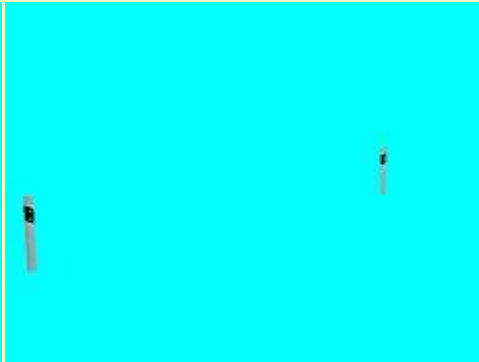


Leitplanke_End_pw1

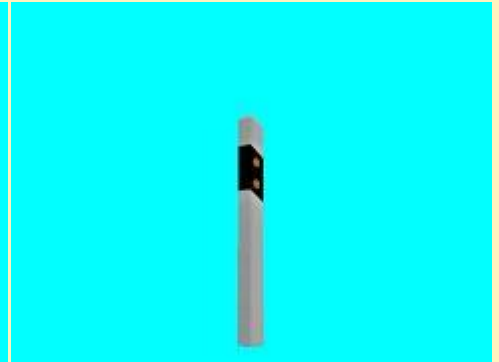
Immobilien:



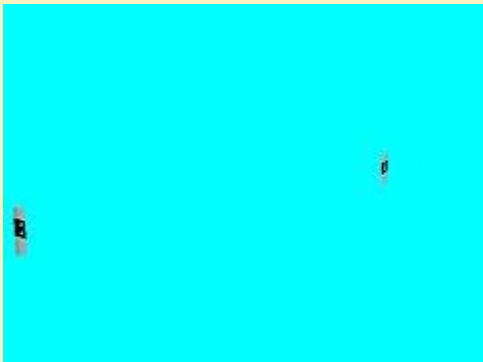
Leipfosten_ora_800_pw1



Leipfosten_ora_900_pw1



Leipfosten_ora_R_pw1



Leipfosten_wei_800_Lpl_pw1



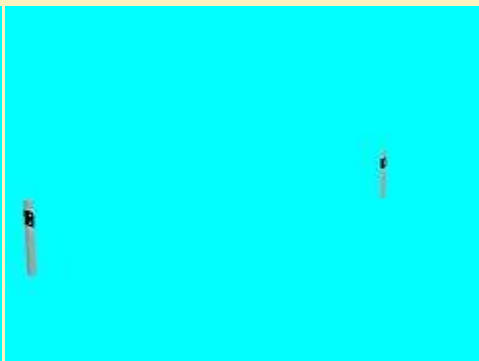
Leipfosten_wei_900_Lpl_pw1



Leipfosten_wei_R_Lpl_pw1



Leipfosten_wei_800_pw1



Leipfosten_wei_900_pw1



Leipfosten_wei_R_pw1

26.06.2015

TDR_SK3_Signalsystem_Set3

Die Bedeutung der Signalbezeichnung wird in einer beiliegenden PDF-Datei erklärt.

Hauptsignale:



Hp1969_B_oV_L

Hp1969_Bv_oV_L

Hp1969_BvB_oV_L



Hp1969_E_oV_L

Hp1969_Ev_oV_L

Hp1969_EvB_oV_L



Hp1969_S_oV_L

Hp1969_Sv_oV_L

Hp1969_SvB_oV_L



Hp1969_B_vkB_L

Hp1969_Bv_vkB_L

Hp1969_BvB_vkB_L



Hp1969_E_vkB_L



Hp1969_Ev_vkB_L



Hp1969_EvB_vkB_L



Hp1969_S_vkB_L



Hp1969_Sv_vkB_L



Hp1969_SvB_vkB_L



Hp1969_B_vN_L



Hp1969_Bv_vN_L



Hp1969_BvB_vN_L



Hp1969_E_vN_L



Hp1969_Ev_vN_L



Hp1969_EvB_vN_L



Hp1969_S_vN_L



Hp1969_Sv_vN_L



Hp1969_SvB_vN_L



Hp1969_B_vW_L



Hp1969_Bv_vW_L



Hp1969_BvB_vW_L



Hp1969_E_vW_L



Hp1969_Ev_vW_L



Hp1969_EvB_vW_L



Hp1969_S_vW_L



Hp1969_Sv_vW_L



Hp1969_SvB_vW_L



Hp1969_B_vW



Hp1969_Bv_vW



Hp1969_BvB_vW



Hp1969_E_vW



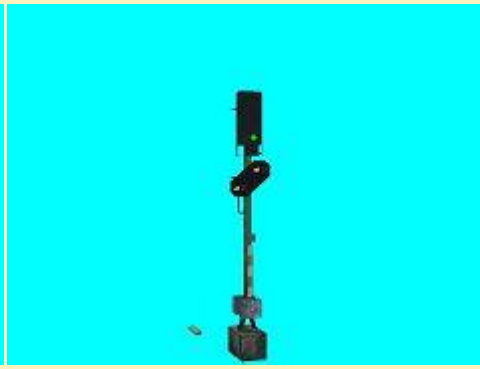
Hp1969_Ev_vW



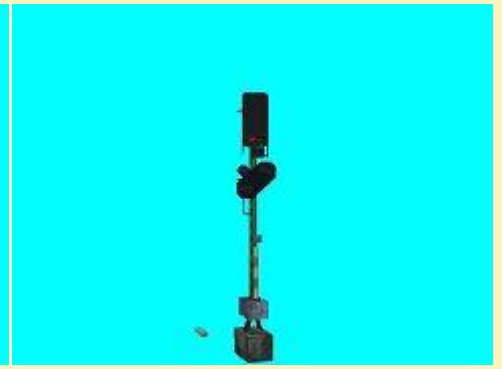
Hp1969_EvB_vW



Hp1969_S_vW



Hp1969_Sv_vW



Hp1969_SvB_vW

einzeln stehende Vorsignalwiederholer:



Hp1969_vW_L



Hp1969_vW_vW_L



Hp1969_vN_vW_L



Hp1969_vkB_vW_L

Vorsignale:

unsicht- bares Modell



Vorsignal_leer für:

Hp1969_B_oV_L
Hp1969_Bv_oV_L
Hp1969_BvB_oV_L
Hp1969_E_oV_L
Hp1969_Ev_oV_L
Hp1969_EvB_oV_L
Hp1969_S_oV_L
Hp1969_Sv_oV_L
Hp1969_SvB_oV_L

Vorsignal_vkB_L für:

Hp1969_B_vkB_L
Hp1969_Bv_vkB_L
Hp1969_BvB_vkB_L
Hp1969_E_vkB_L
Hp1969_Ev_vkB_L
Hp1969_EvB_vkB_L
Hp1969_S_vkB_L
Hp1969_Sv_vkB_L
Hp1969_SvB_vkB_L

Vorsignal_vN_L für:

Hp1969_B_vN_L
Hp1969_Bv_vN_L
Hp1969_BvB_vN_L
Hp1969_E_vN_L
Hp1969_Ev_vN_L
Hp1969_EvB_vN_L
Hp1969_S_vN_L
Hp1969_Sv_vN_L
Hp1969_SvB_vN_L
Hp1969_AvB_vN_L



VorSignal_vW_L für:

Hp1969_B_vW_L
Hp1969_Bv_vW_L
Hp1969_BvB_vW_L
Hp1969_E_vW_L
Hp1969_Ev_vW_L
Hp1969_EvB_vW_L
Hp1969_S_vW_L
Hp1969_Sv_vW_L
Hp1969_SvB_vW_L

Vorsignal_vW für:

Hp1969_B_vW
Hp1969_Bv_vW
Hp1969_BvB_vW
Hp1969_E_vW
Hp1969_Ev_vW
Hp1969_EvB_vW
Hp1969_S_vW
Hp1969_Sv_vW
Hp1969_SvB_vW

SK 3

TDR_SK3_Signalsystem_Set3.rar

26.06.2016

Gleismauer zum 1. 6er-Treffen (Freemodell)



GLM2_SB4

SB 4

Gleismauer 2 Free.zip

25.06.2016

Plakatwand zum 1. 6er-Treffen (Freemodell)



Plakatwand6erHarsum2016_BH2

BH 2

Plakatwand6erHarsum2016_BH2.zip

25.06.2016

Toilettenhaus

*Dieses Modell ist exklusiv für Teilnehmer des 1. 6er-Treffen in Harsum entstanden.
Über eine spätere Veröffentlichung ist noch nicht entschieden.*



Toil_Haus_2_H_berg_pw1

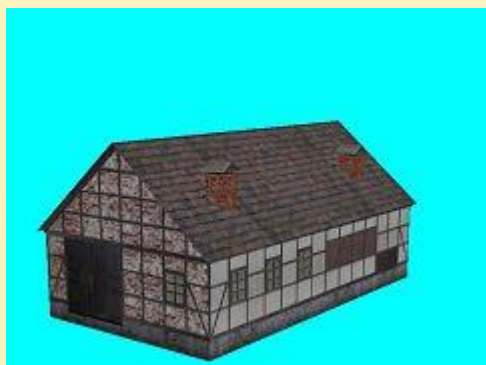
PW 1

Sondermodell_6er-Treffen_pw1.zip

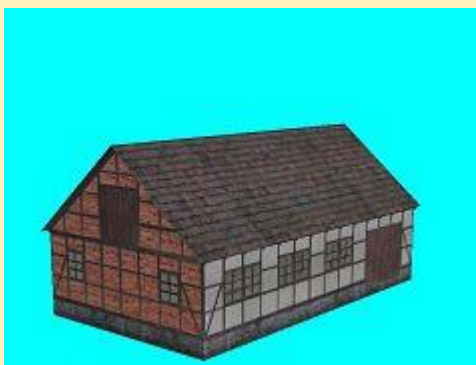
25.06.2016

Holzwerk Kirchbrak

*Dieses Modell ist exklusiv für Teilnehmer des 1. 6er-Treffen in Harsum entstanden.
Über eine spätere Veröffentlichung ist noch nicht entschieden.*



Holzwerk_Kirchbrak_MS4



gegenüber liegende Ansicht

MS 4

Sondermodell_6er-Treffen_ms4.zip

25.06.2016

Denkmal verstorbener Kons

*Dieses Modell ist aktualisiert mit Manfred "Manne" Roth (MR1).
Besitzer des Modells müssen lediglich die "15934.dds" überschreiben.*



Denkmal_Kons

HB 2

HB2_DENKMAL_KON.zip

25.06.2016

Ernst August-Denkmal

*Dieses Modell ist exklusiv für Teilnehmer des 1. 6er-Treffen in Harsum entstanden.
Es kann mit einem später erscheinenden weiteren Denkmal-Baukasten nachgebaut werden.*



Denkmal_Ernst-August-v-H
_6erTreffen-1_BH1

BH 1

Sondermodell_6er-Treffen.rar

21.06.2016

BR 110 Kasten blau DB Epoche IV Set 6



DB_110-104-bl-EpIV_DB1-SK2



DB_110-150-bl-EpIV_DB1-SK2



DB_110-162-bl-EpIV_DB1-SK2



DB_110-173-bl-EpIV_DB1-SK2

Vora-Shop
Trend-Shop

DB100260.zip
V60NDB10260.zip

21.06.2016

BR 110 Kasten blau DB Epoche IV Set 5



DB_110-137-bl-EpIV_DB1-SK2



DB_110-183-bl2-EpIV_DB1-SK2



DB_110-246-bl-EpIV_DB1-SK2



DB_110-287-bl-EpIV_DB1-SK2

Vora-Shop

Trend-Shop

DB100259.zip

V60NDB10259.zip

21.06.2016

BR 110 Kasten blau DB Epoche IV Set 4



DB_110-189-bl-EpIV_DB1-SK2



DB_110-201-bl-EpIV_DB1-SK2



DB_110-222-bl-EpIV_DB1-SK2

Vora-Shop

Trend-Shop

DB100258.zip

V60NDB10258.zip

21.06.2016

BR 110 Kasten blau DB Epoche IV Set 3



DB_110-142-bl-EpIV_DB1-SK2



DB_110-149-bl-EpIV_DB1-SK2



DB_110-168-bl-EpIV_DB1-SK2

Vora-Shop

Trend-Shop

DB100257.zip

V60NDB10257.zip

14.06.2016

Kleine mediterrane Fischerboote

Rollmaterial:



Fischerboot_A_FF1



Fischerboot_B_FF1



Fischerboot_C_FF1



Fischerboot_D_FF1



Fischerboot_E_FF1



Fischerboot_F_FF1



Fischerboot_G_FF1

Immobilien:



Fischerboot_A_im_FF1



Fischerboot_B_im_FF1



Fischerboot_C_im_FF1



Fischerboot_D_im_FF1



Fischerboot_E_im_FF1

Vora-Shop

Trend-Shop

FF100083.zip

V60NFF10083.zip

12.06.2016

DRG - 2./3.Klasse Eilzugabteilwagen, (A)BC4 pr04 - Set 2



DRG-BC4_pr04-Berlin_30-310_HB4



DRG-BC4_pr04-Dresden_30-520_HB4



DRG-BC4_pr04-Hannover_30-561_HB4



DRG-BC4_pr04-Stuttgart_30-623_HB4

Vora-Shop

Trend-Shop

HB400078.zip

V60NHB40078.zip

12.06.2016

DRG - Eilzug-Gepäckwagen, Pw4 pr04 - Set 2



DRG-Pw4_pr04-Berlin-
108_641_HB4



DRG-Pw4_pr04-Dresden-108_708
_HB4



DRG-Pw4_pr04-Essen-
108_783_HB4



DRG-Pw4_pr04-Stuttgart-108_803
_HB4

Vora-Shop
Trend-Shop

HB400077.zip
V60NHB40077.zip

12.06.2016

DRG - 2./3.Klasse Eilzugabteilwagen, BC4 pr05 - Set 2



DRG-BC4_pr05-Berlin_30-515_HB4 DRG-BC4_pr05-Cassel_30-821_HB4



DRG-BC4_pr05-Dresden_30-362
_HB4



DRG-BC4_pr05-Stuttgart_30-416
_HB4

Vora-Shop

Trend-Shop

HB400076.zip

V60NHB40076.zip

12.06.2016

DRG - 3.Klasse Eilzugabteilwagen, C4 pr03 - Set 2



DRG-C4_pr03-Berlin_42-163_HB4



DRG-C4_pr03-Dresden_42-
729_HB4



DRG-C4_pr03-Hannover_41-060
_HB4



DRG-C4_pr03-Stuttgart_41-318
_HB4

Vora-Shop

Trend-Shop

HB400075.zip

V60NHB40075.zip

12.06.2016

DRG - 3.Klasse Eilzugabteilwagen, C4 pr-12 - Set 2



DRG-C4_pr12-Berlin_41-053_HB4



DRG-C4_pr12-Cassel_42-251_HB4



DRG-C4_pr12-Dresden_42-932_HB4



DRG-C4_pr12-Stuttgart_41-610_HB4

Vora-Shop
Trend-Shop

HB400074.zip
V60NHB40074.zip

09.06.2016

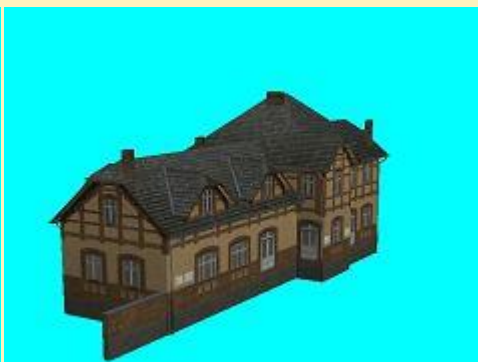
Bahnhof Niersfurt Set

Neben den Modellen sind drei Splines (ID-Nrn. 3517 - 3519) sowie eine Demo-Anlage enthalten.

Empfangsgebäude:



Bf_Nft_EG_pw1



Bf_Nft_EG_neutr_pw1

Hausbahnsteigdächer:

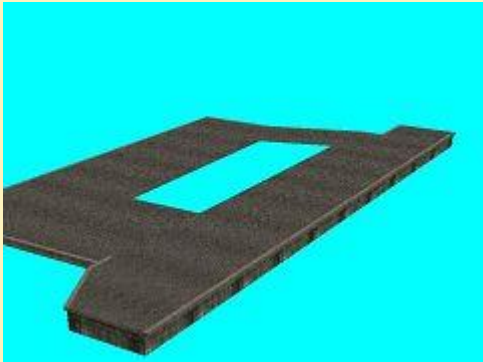


Bf_Nft_HsBstgDa1_pw1

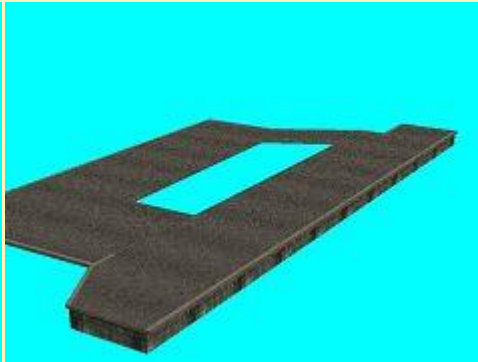


Bf_Nft_HsBstgDa2_pw1

Grundplatten in 3 Texturvarianten und 2 Bahnsteighöhen:

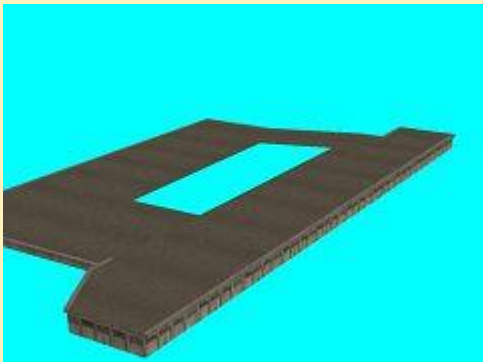


Bf_Nft_EG_GruPla1_38_pw1

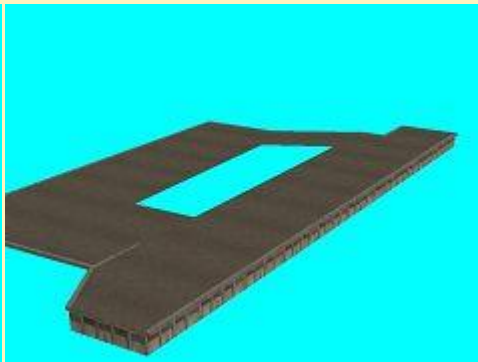


Bf_Nft_EG_GruPla1_76_pw1

(Textur Bstg_Hardenberg)

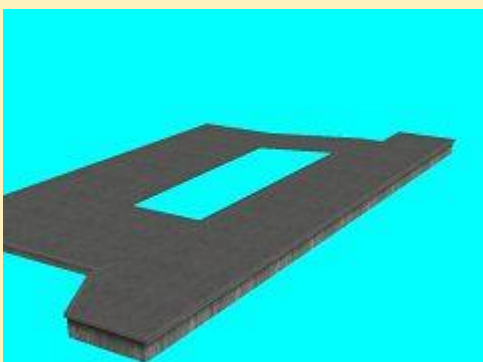


Bf_Nft_EG_GruPla2_38_pw1

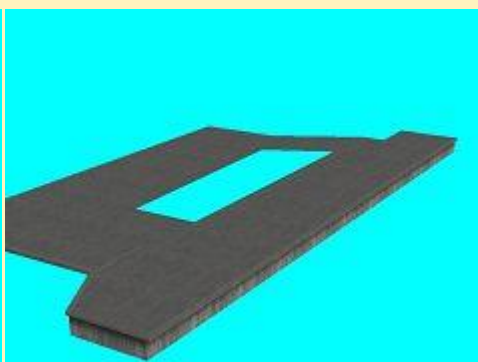


Bf_Nft_EG_GruPla2_76_pw1

(Textur Bstg_Mannheim-Ff)



Bf_Nft_EG_GruPla3_38_pw1



Bf_Nft_EG_GruPla3_76_pw1

(Textur Bstg_Niersfurt)

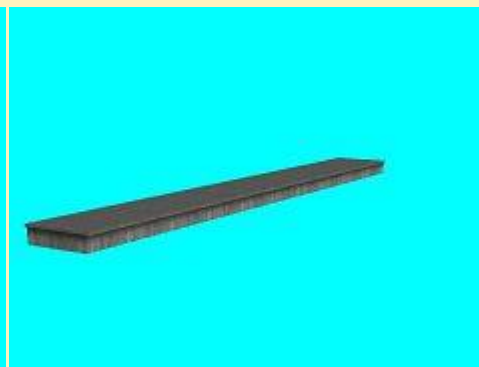
*Bahnsteigelemente in 3 Breiten: (Längen 12, 20 und 40 m)
Bahnsteig 1 (4,84 m breit, Gleisabstand 8,16 m)*



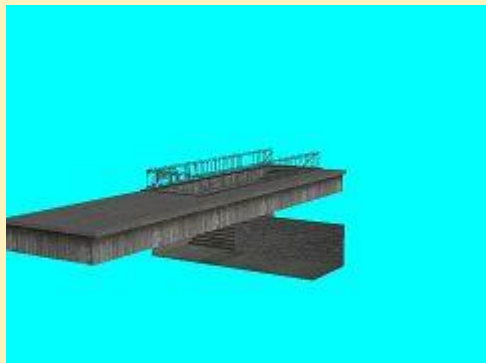
Bf_Nft_Bstg1_Ve-12_pw1



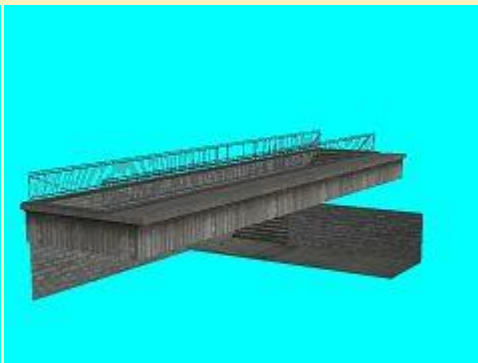
Bf_Nft_Bstg1_Ve-20_pw1



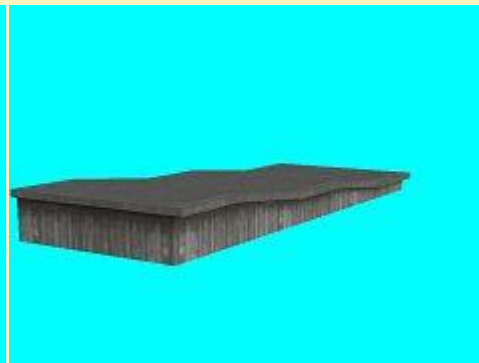
Bf_Nft_Bstg1_Ve-40_pw1



Bf_Nft_Bstg1_Abgang1-20_pw1



Bf_Nft_Bstg1_Abgang2-20_pw1



Bf_Nft_Bstg1_End1-12_pw1
(12,3 m lang)

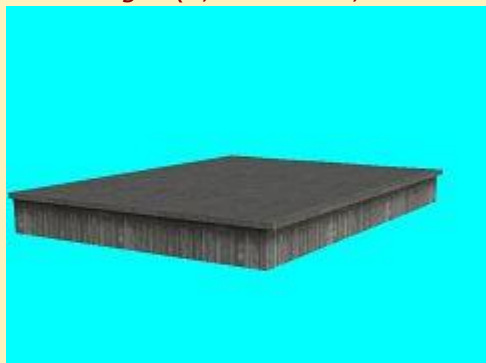


Bf_Nft_Bstg1_Ue1-12_pw1

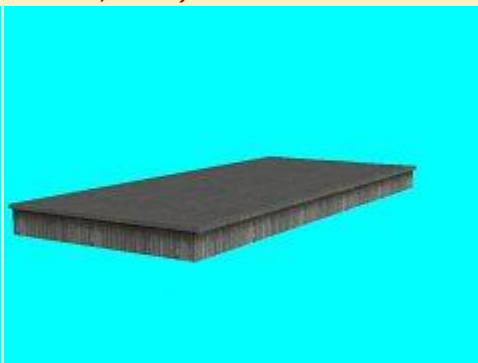


Bf_Nft_Bstg1_Ue1-12_pw1

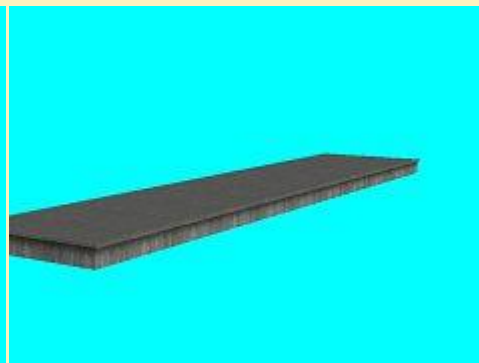
Bahnsteig 2 (9,00 m breit, Gleisabstand 12,32 m)



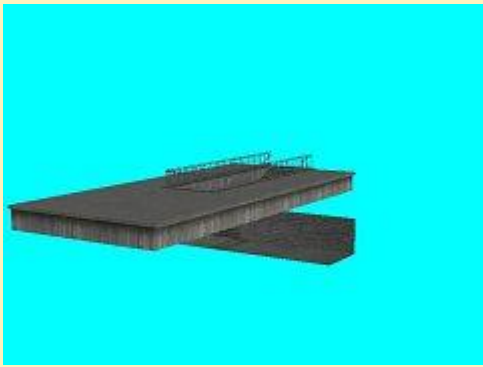
Bf_Nft_Bstg2_Ve-12_pw1



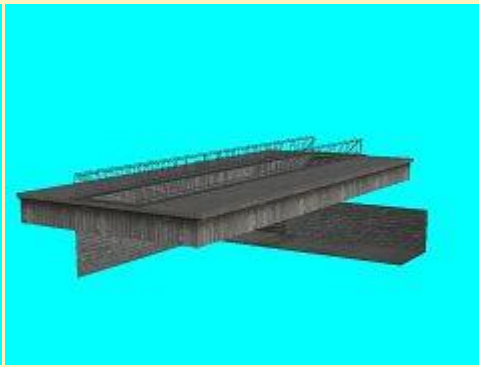
Bf_Nft_Bstg2_Ve-20_pw1



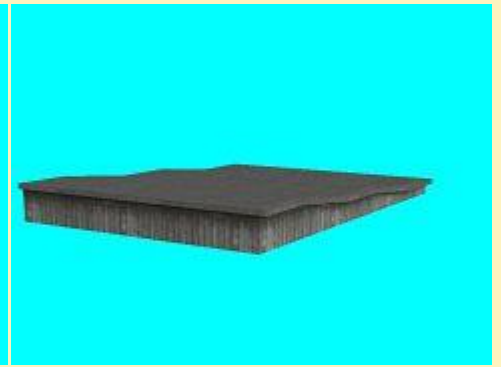
Bf_Nft_Bstg2_Ve-40_pw1



Bf_Nft_Bstg2_Abgang1-20_pw1



Bf_Nft_Bstg2_Abgang2-20_pw1



Bf_Nft_Bstg2_End1-12_pw1
(12,3 m lang)

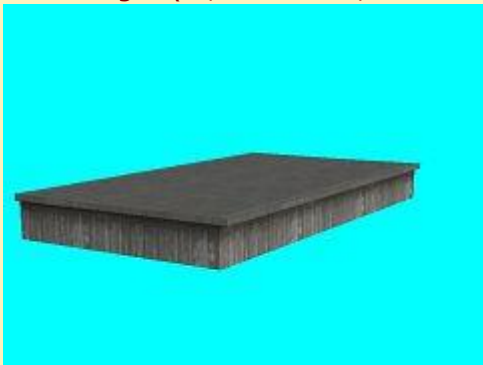


Bf_Nft_Bstg2_Ue1-12_pw1

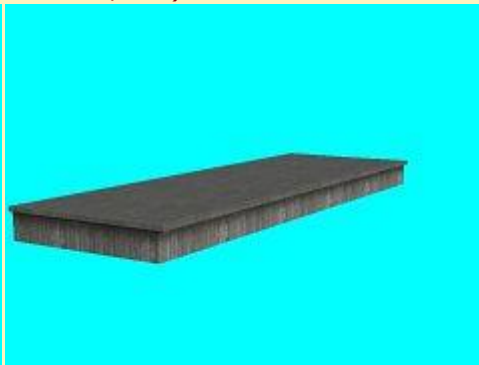


Bf_Nft_Bstg2_Ue1-12_pw1

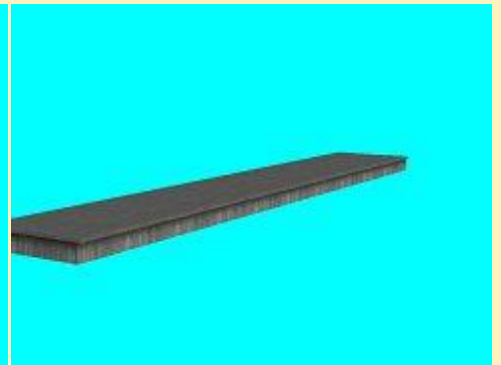
Bahnsteig 3 (6,68 m breit, Gleisabstand 10,0 m)



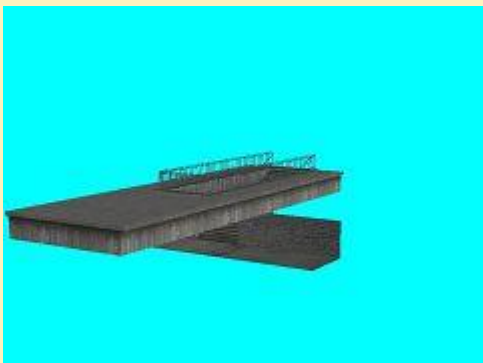
Bf_Nft_Bstg3_Ve-12_pw1



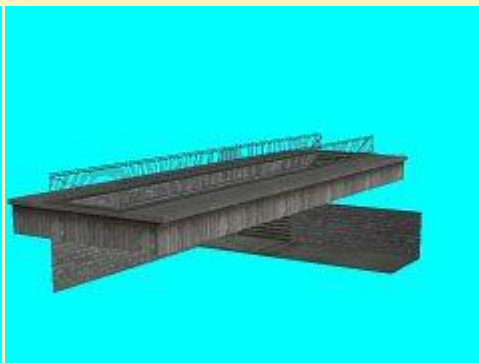
Bf_Nft_Bstg3_Ve-20_pw1



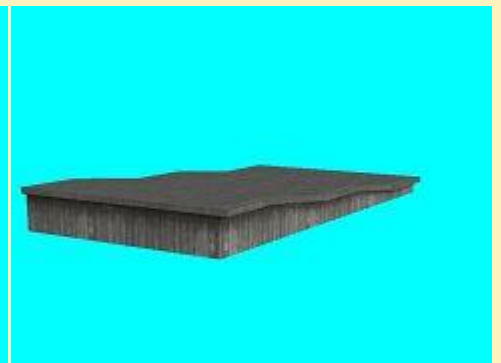
Bf_Nft_Bstg3_Ve-40_pw1



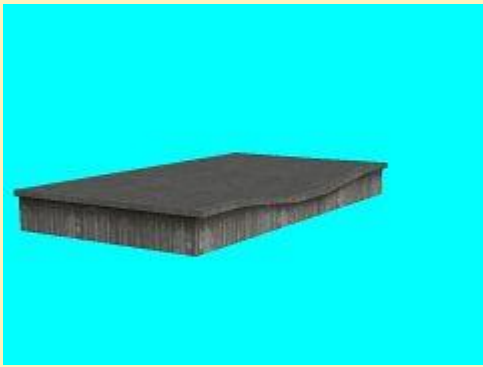
Bf_Nft_Bstg3_Abgang1-20_pw1



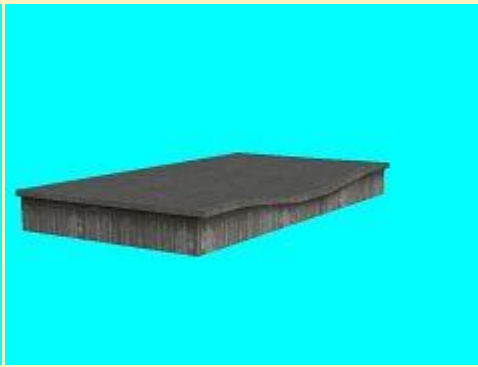
Bf_Nft_Bstg3_Abgang2-20_pw1



Bf_Nft_Bstg3_End1-12_pw1
(12,3 m lang)



Bf_Nft_Bstg3_Ue1-12_pw1



Bf_Nft_Bstg3_Ue1-12_pw1

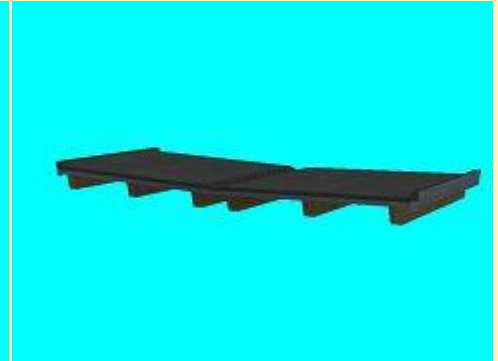
*Bahnsteigdächer in 3 Breiten: (Längen 20 und 40 m)
Breite 4,84 m*



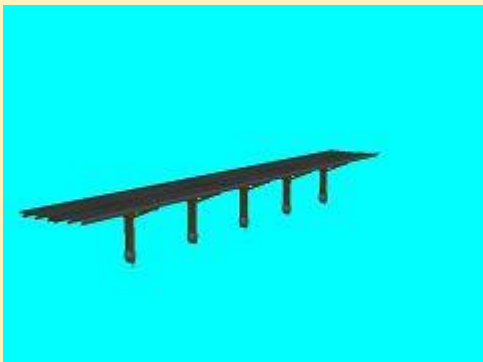
Bf_Nft_BstDa-2xst8-20x4_84_pw1



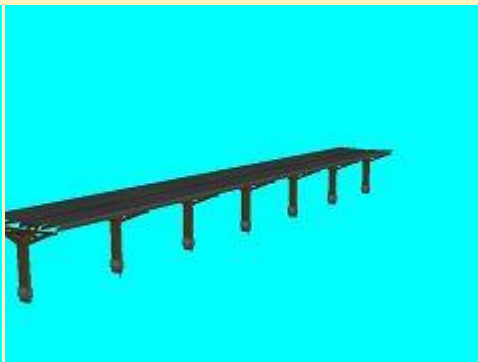
Bf_Nft_BstDa-4xst8-20x4_84_pw1



Bf_Nft_BstDa-End-2x4_84_pw1
(2 m lang)



Bf_Nft_BstDa-5xst8-40x4_84_pw1



Bf_Nft_BstDa-7xst8-40x4_84_pw1



Bf_Nft_BstDa-End-st8-2x4_84_pw1
(2 m lang)

Breite 6,68 m



Bf_Nft_BstDa-2xst3-20x6_68_pw1



Bf_Nft_BstDa-2xst4-20x6_68_pw1



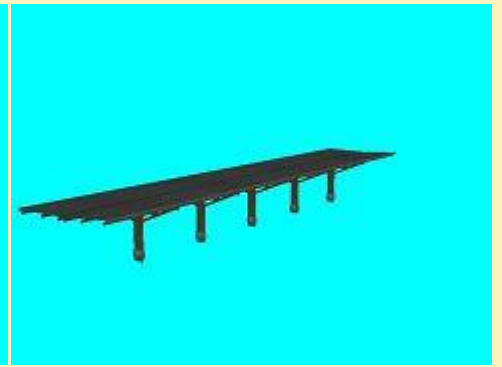
Bf_Nft_BstDa-4xst3_4-20x6_68_pw1



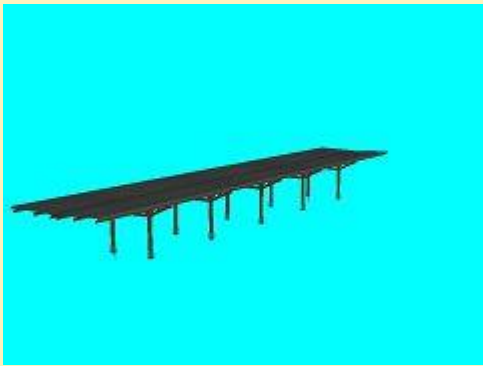
Bf_Nft_BstDa-4xst3-20x6_68_pw1



Bf_Nft_BstDa-4xst4-20x6_68_pw1



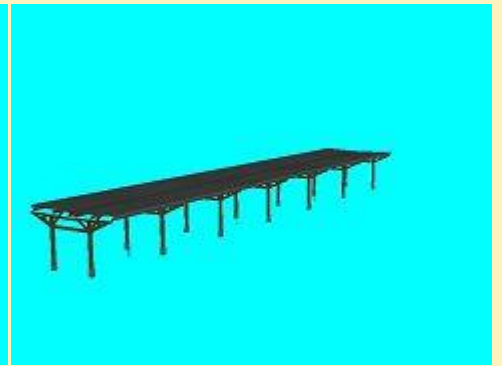
Bf_Nft_BstDa-5xst3-40x6_68_pw1



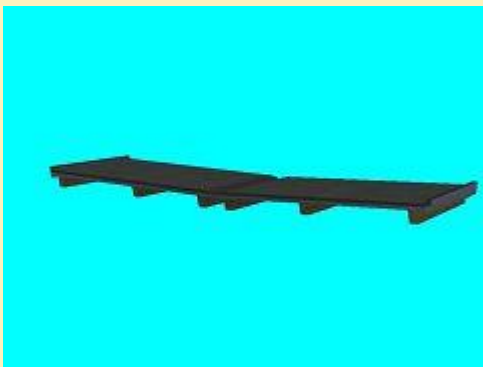
Bf_Nft_BstDa-5xst4-40x6_68_pw1



Bf_Nft_BstDa-7xst3-40x6_68_pw1



Bf_Nft_BstDa-7xst4-40x6_68_pw1



Bf_Nft_BstDa-End-2x6_68_pw1



Bf_Nft_BstDa-End-st3-2x6_68_pw1

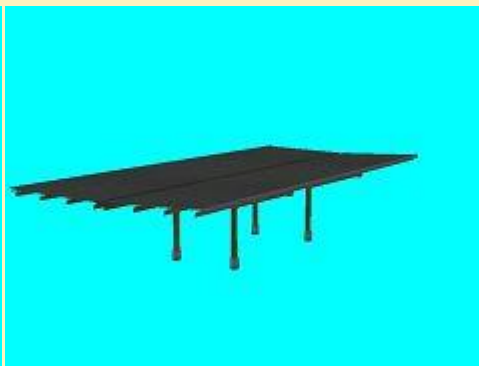


Bf_Nft_BstDa-End-st4-2x6_68_pw1

Breite 9,00 m



Bf_Nft_BstDa-2xst1-20x9_pw1



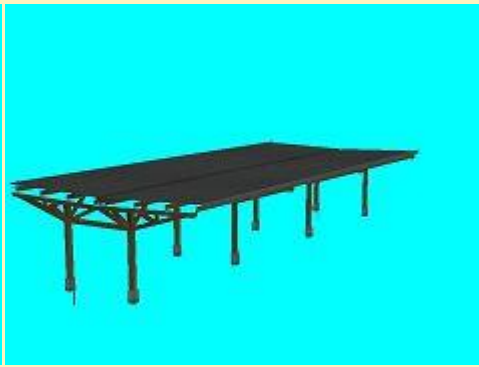
Bf_Nft_BstDa-2xst2-20x9_pw1



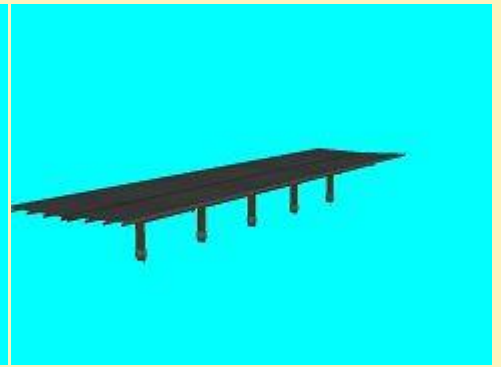
Bf_Nft_BstDa-4xst1_2-20x9_pw1



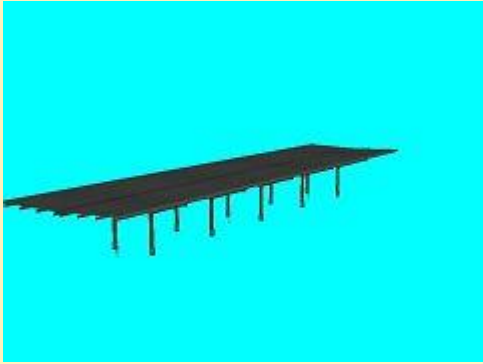
Bf_Nft_BstDa-4xst1-20x9_pw1



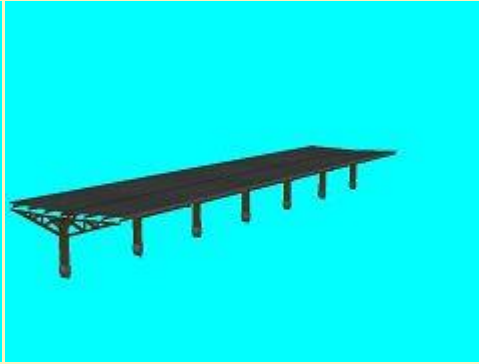
Bf_Nft_BstDa-4xst2-20x9_pw1



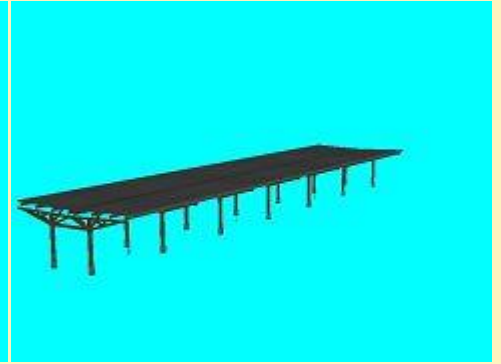
Bf_Nft_BstDa-5xst1-40x9_pw1



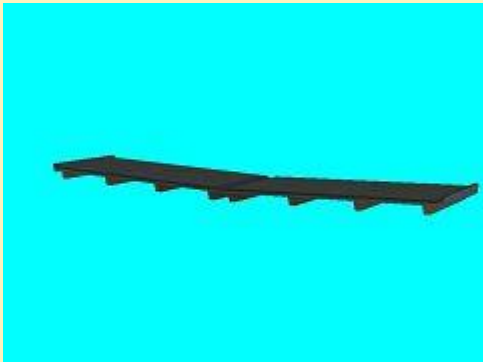
Bf_Nft_BstDa-5xst2-40x9_pw1



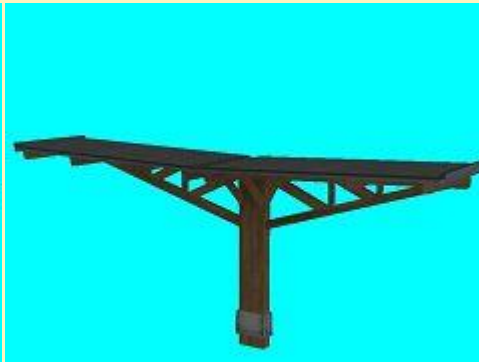
Bf_Nft_BstDa-7xst1-40x9_pw1



Bf_Nft_BstDa-7xst2-40x9_pw1



Bf_Nft_BstDa-End-2x9_pw1

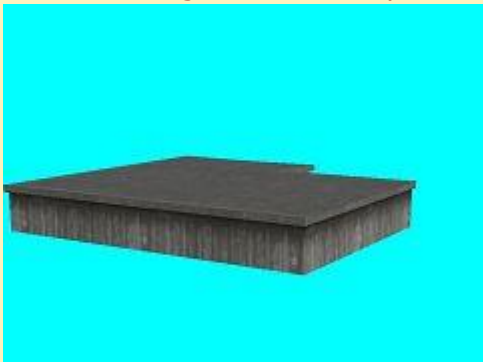


Bf_Nft_BstDa-End-st1-2x9_pw1

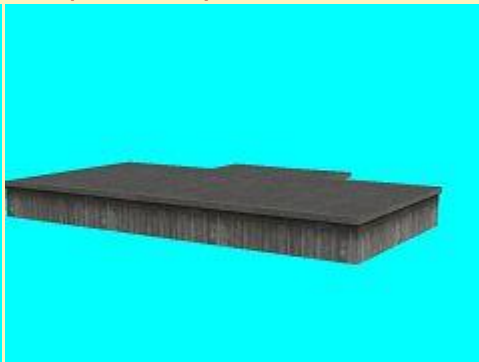


Bf_Nft_BstDa-End-st2-2x9_pw1

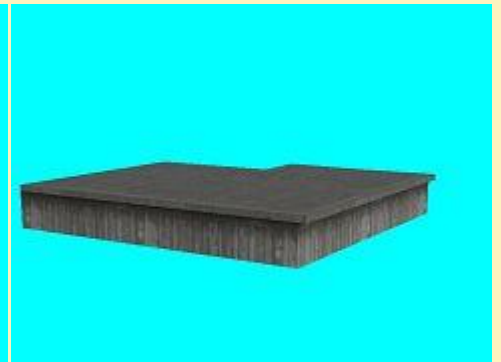
Querbahnsteigmodule für Kopfbahnhöfe (Tiefe 6 m)



Bf_Nft_Bstg1_Q-L_1435_pw1



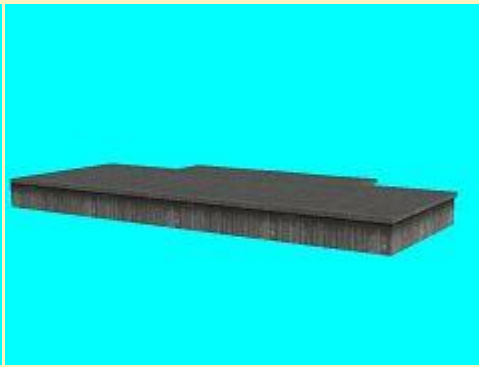
Bf_Nft_Bstg1_Q-M_1435_pw1



Bf_Nft_Bstg1_Q-R_1435_pw1



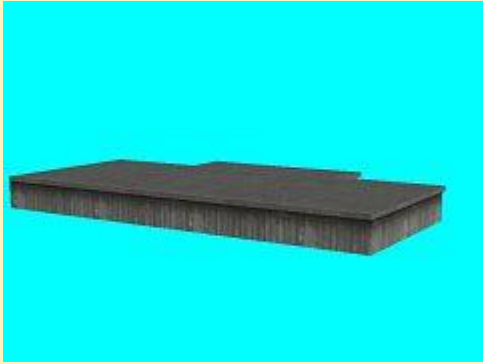
Bf_Nft_Bstg1-3_Q-V_1435_pw1



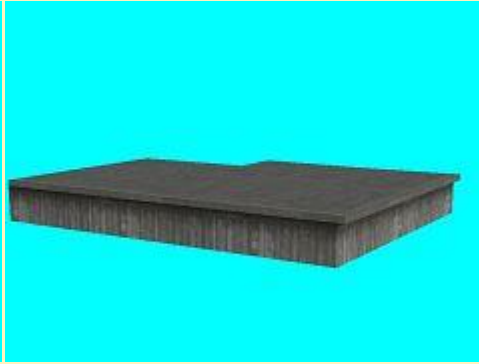
Bf_Nft_Bstg2_Q-M_1435_pw1



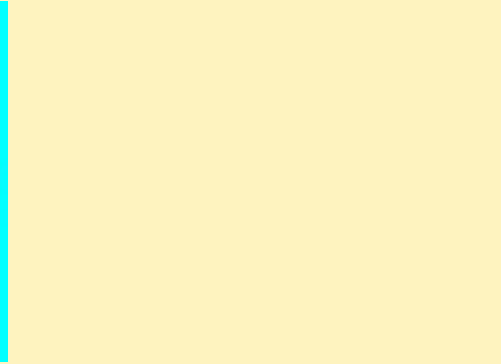
Bf_Nft_Bstg3_Q-L_1435_pw1



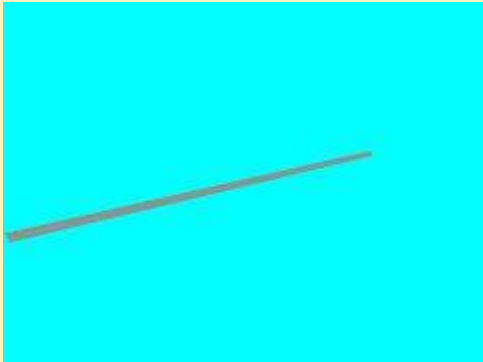
Bf_Nft_Bstg3_Q-M_1435_pw1



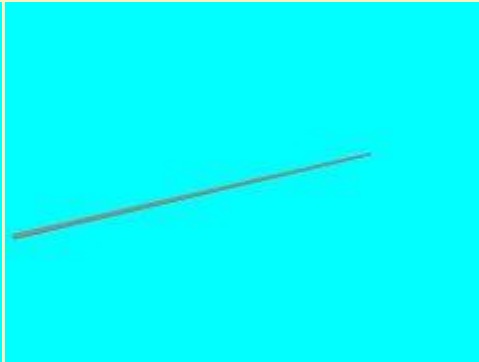
Bf_Nft_Bstg3_Q-R_1435_pw1



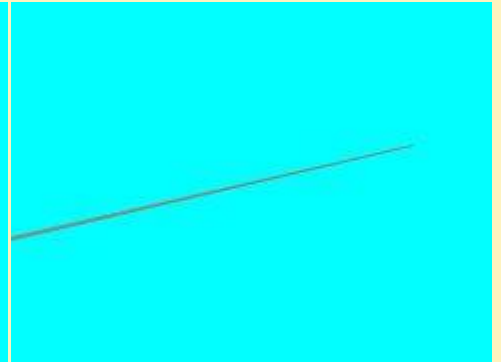
Markierungslinien und Verbindungselemente für Meter- und Regelspur:



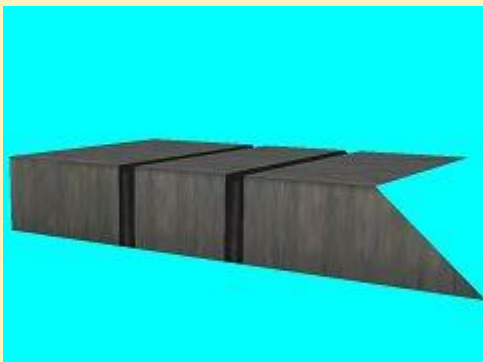
Bf_Nft_Bstg_Strich-12_pw1



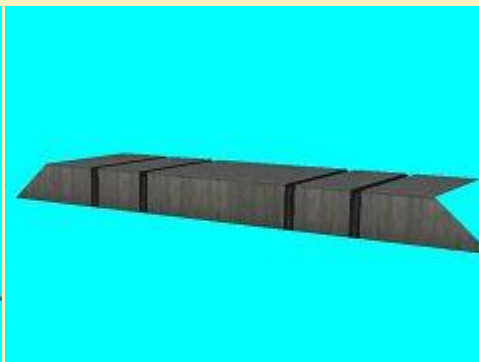
Bf_Nft_Bstg_Strich-20_pw1



Bf_Nft_Bstg_Strich-40_pw1



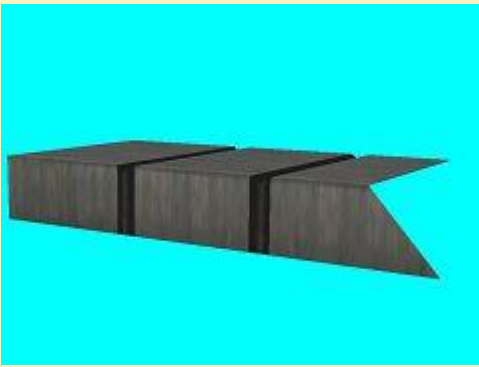
Bf_Nft_Bstg_Verb1000-180_pw1



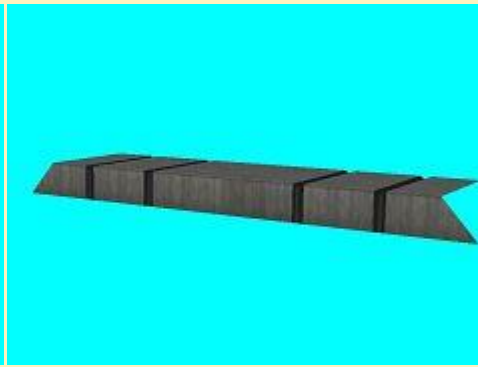
Bf_Nft_Bstg_Verb1000-360_pw1



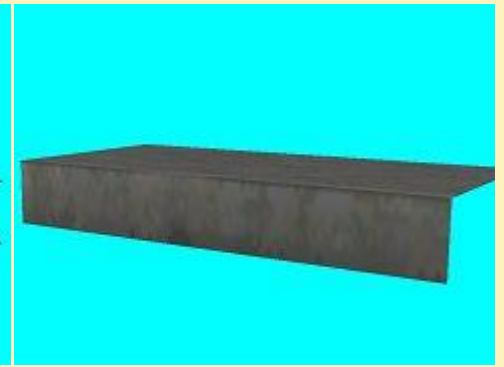
Bf_Nft_Bstg_Verbverl-200_pw1



Bf_Nft_Bstg_Verb1435-225_pw1

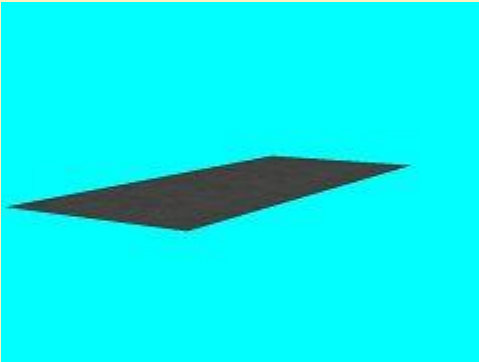


Bf_Nft_Bstg_Verb1435-450_pw1

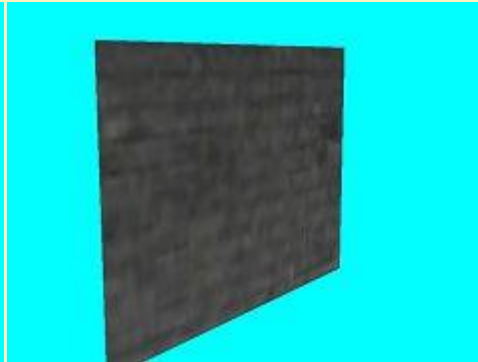


Bf_Nft_Bstg_Verbverl-450_pw1

allg. Immobilien:



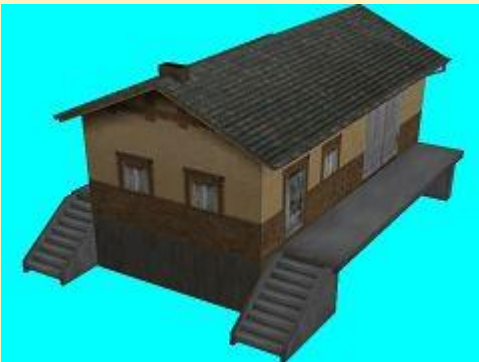
Bf_Nft_Bstg_Abdeckpl_pw1



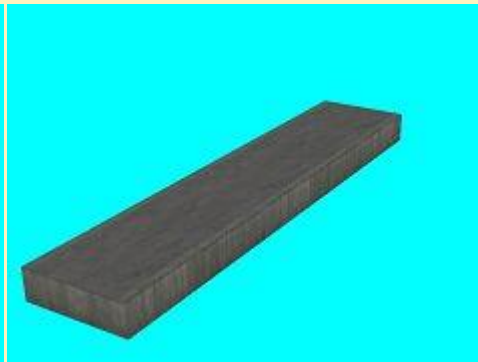
Bf_Nft_Bstg_Abg_Verschl_pw1



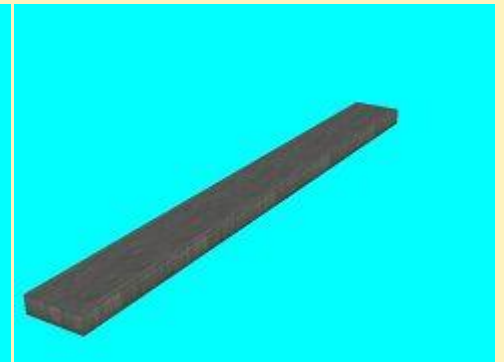
Bf_Nft_Guetersch_8m_pw1



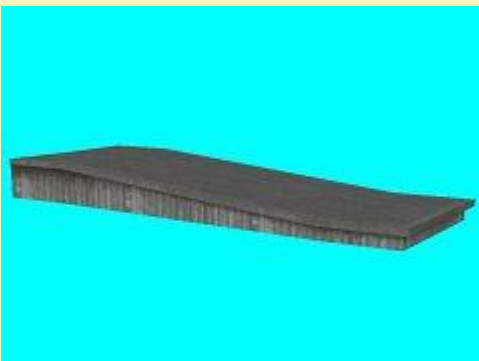
Bf_Nft_Guetersch_9m_pw1



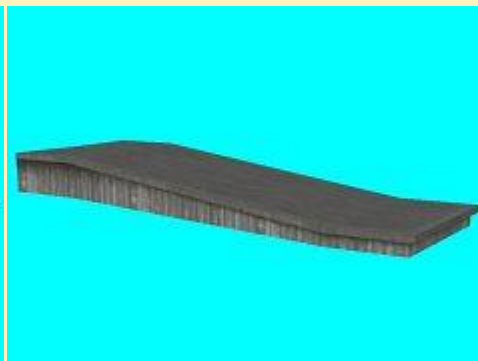
Bf_Nft_Laufsteg10x1_pw1



Bf_Nft_Laufsteg20x1_pw1



Bf_Nft_Bstg_Rampe_38_pw1



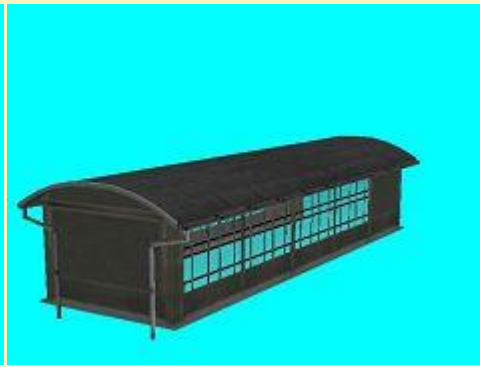
Bf_Nft_Bstg_Rampe_76_pw1



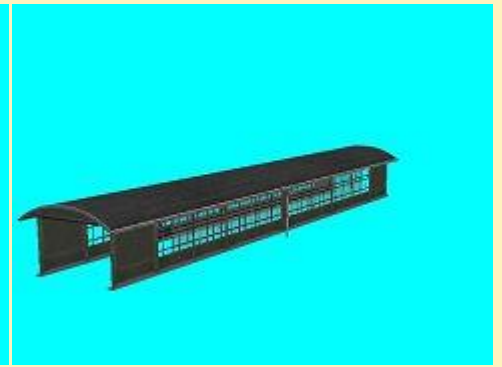
Bf_Nft_Bstg_Schild1_pw1



Bf_Nft_Bstg_Schild2_pw1



Bf_Nft_Bstg_Bl_Abgang1_pw1



Bf_Nft_Bstg_Bl_Abgang2_pw1



Bf_Nft_Bstg_Spl_Ecke_pw1pw1

Vora-Shop

PW100063.zip

07.06.2016

BR 110 Kasten blau DB Epoche IV Set 2



DB_110-126-bl-EpIV_DB1-SK2



DB_110-176-bl-EpIV_DB1-SK2



DB_110-183-bl-EpIV_DB1-SK2



DB_110-188-bl-EpIV_DB1-SK2

Vora-Shop
Trend-Shop

DB100256.zip

V60NDB10256.zip

07.06.2016

BR 110 Kasten blau DB Epoche IV Set 1



DB_110-117-bl-EpIV_DB1-SK2



DB_110-171-bl-EpIV_DB1-SK2



DB_110-175-bl-EpIV_DB1-SK2



DB_110-180-bl-EpIV_DB1-SK2

Vora-Shop
Trend-Shop

DB100255.zip
V60NDB10255.zip

07.06.2016

BR110 Kasten blau DB-DBAG Epoche IV



DB_110-129-bl-EpIV_DB1-SK2



DB_110-163-bl-EpIV_DB1-SK2



DBAG_110-228-bl-EpV_DB1-SK2

Vora-Shop
Trend-Shop

DB100254.zip
V60NDB10254.zip

07.06.2016

BR 110 / E10 Kasten blau DB Epoche IV



DB_110-229-bl-EpIV_DB1-SK2



DB_110-262-bl-EpIV_DB1-SK2



DB_E10-248-bl-EpIV_DB1-SK2

Vora-Shop
Trend-Shop

DB100253.zip
V60NDB10253.zip

06.06.2016

DRG - 2./3.Klasse Eilzugabteilwagen, (A)BC4 pr04 - Set 1



DRG-BC4_pr04-Breslau_61-123_HB4



DRG-BC4_pr04-Cassel_61-012_HB4



DRG-BC4_pr04-Essen_61-032_HB4



DRG-BC4_pr04-Koenigsberg_61-029_HB4

Vora-Shop
Trend-Shop

HB400073.zip
V60NHB40073.zip

06.06.2016

DRG - Eilzug-Gepäckwagen, Pw4 pr04 - Set 1



DRG-Pw4_pr04-Breslau-93_026_HB4



DRG-Pw4_pr04-Cassel-93_035_HB4



DRG-Pw4_pr04-Essen-93_049_HB4



DRG-Pw4_pr04-Koenigsberg-93_012_HB4

Vora-Shop
Trend-Shop

HB400072.zip
V60NHB40072.zip

06.06.2016

DRG - 2./3.Klasse Eilzugabteilwagen, BC4 pr05 - Set 1



DRG-BC4_pr05-Breslau_61-022_HB4



DRG-BC4_pr05-Cassel_61-105_HB4



DRG-BC4_pr05-Halle_61-117_HB4



DRG-BC4_pr05-Koenigsberg_61-114_HB4

Vora-Shop

Trend-Shop

HB400071.zip

V60NHB40071.zip

06.06.2016

DRG - 3.Klasse Eilzugabteilwagen, C4 pr03 - Set 1



DRG-C4_pr03-Breslau_62-026_HB4



DRG-C4_pr03-Essen_62-149_HB4



DRG-C4_pr03-Koenigsberg_62-197_HB4



DRG-C4_pr03-Magdeburg_62-210_HB4

Vora-Shop

Trend-Shop

HB400070.zip

V60NHB40070.zip

06.06.2016

DRG - 3.Klasse Eilzugabteilwagen, C4 pr-12 - Set 1



DRG-C4_pr12-Breslau_62-173_HB4 DRG-C4_pr12-Cassel_62-135_HB4



DRG-C4_pr12-Halle_62-114_HB4 DRG-C4_pr12-Koenigsberg_62-202_HB4

Vora-Shop
Trend-Shop

HB400069.zip
V60NHB40069.zip

06.06.2016

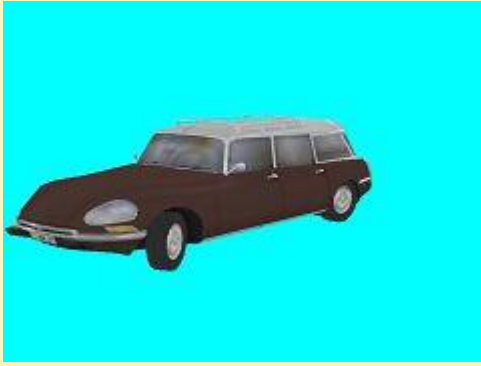
Citroen DS 21 Break Bj 69 international

Rollmaterial:



Citroen-DS21-Break_A_bordeaux_BH1

Citroen-DS21-Break_A_weiss_BH1



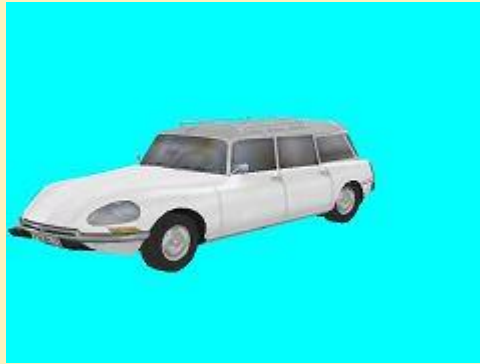
Citroen-DS21-Break_CH_braun_BH1



Citroen-DS21-Break_CH_gruen_BH1



Citroen-DS21-Break_F_blau_BH1



Citroen-DS21-Break_F_weiss_BH1

Immobilien:



Citroen-DS21-Break_A_blau_IM_BH1



Citroen-DS21-Break_A_braun_IM_BH1



Citroen-DS21-Break_CH_bordeaux_IM_BH1



Citroen-DS21-Break_CH_weiss_IM_BH1



Citroen-DS21-Break_F_bordeaux
_IM_BH1



Citroen-DS21-Break_F_gruen_IM
_BH1

Vora-Shop

BH100273.zip

04.06.2016

OBB_1189-08 (Freemodell)

Jubiläumsmodell für 5 Jahre FF1.



OBB_1189-08

Vora-Shop

ff1fr016.zip

03.06.2016

Zugschlussstafelwechsel (Freemodell)

Eine Demoanlage liegt dem Set bei.



Zugschlussstafeln-hoch_BH1



Zugschlussstafeln-runter_BH1

Vora-Shop

bh1fr007.zip

02.06.2016

Citroen DS 21 Break Bj 69

Rollmaterial:



Citroen-DS21-Break_blau_BH1



Citroen-DS21-Break_bordeaux_BH1



Citroen-DS21-Break_braun_BH1



Citroen-DS21-Break_gruen_BH1



Citroen-DS21-Break_weiss_BH1

Immobilien:



Citroen-DS21-Break_blau_IM_BH1



Citroen-DS21-Break_bordeaux_IM_BH1



Citroen-DS21-Break_braun_IM_BH1



Citroen-DS21-Break_gruen_IM_BH1



Citroen-DS21-Break_weiss_IM_BH1