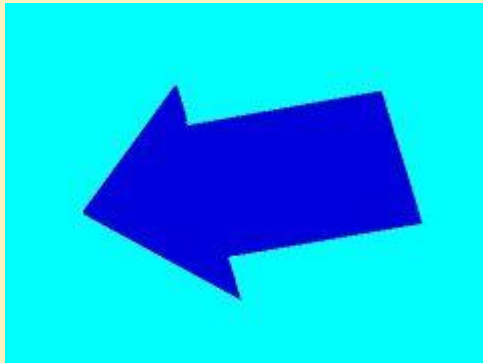


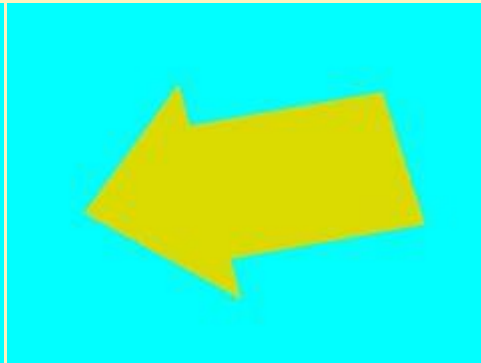
28.07.2016

Streckenhilfsmittel (Freemodell)

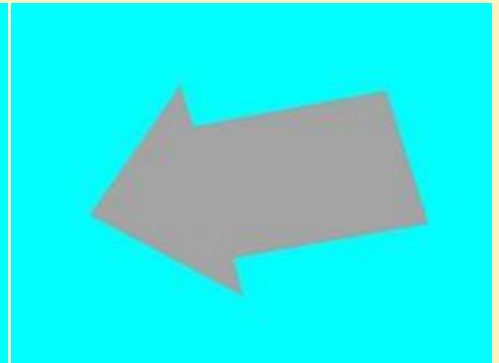
Erstlingswerk als Kon von Hans-Peter Goedel (DU2)



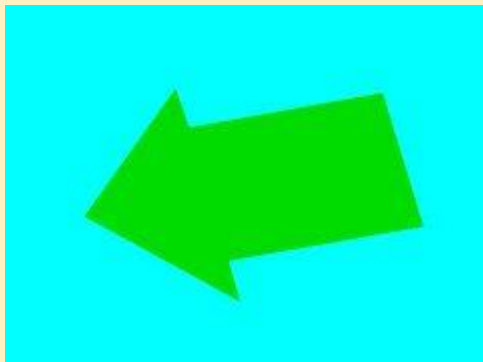
Pfeil-Blau_DU2



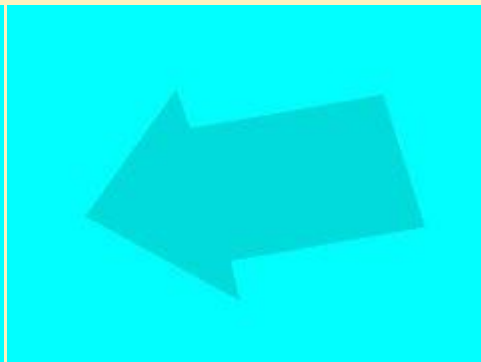
Pfeil-Gelb_DU2



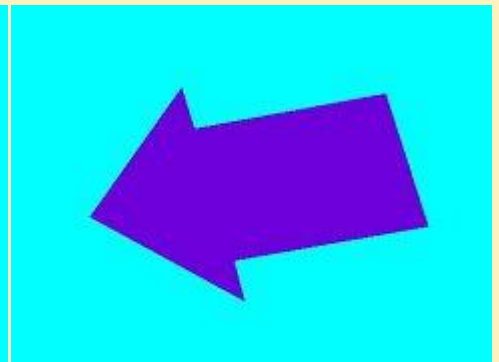
Pfeil-Grau_DU2



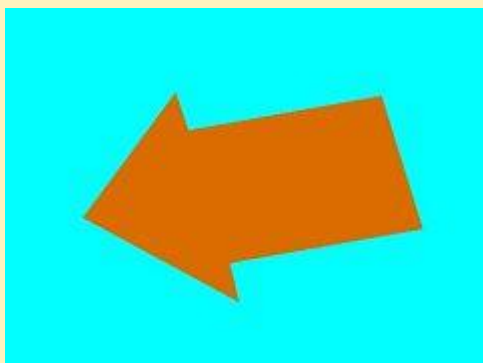
Pfeil-Gruen_DU2



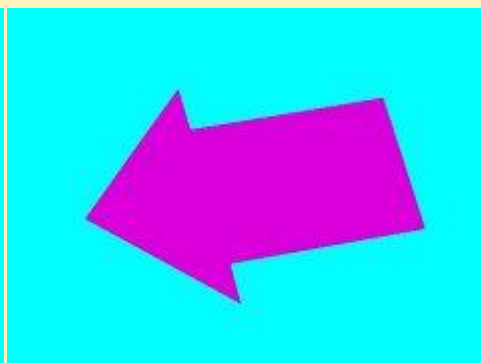
Pfeil-Hellblau_DU2



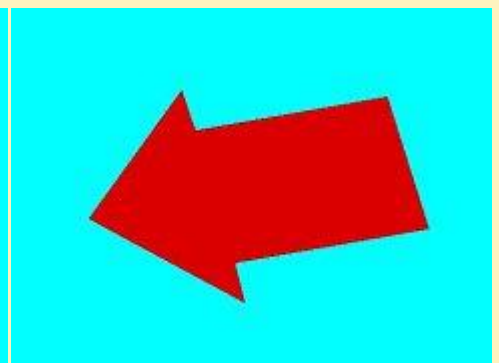
Pfeil-Lila_DU2



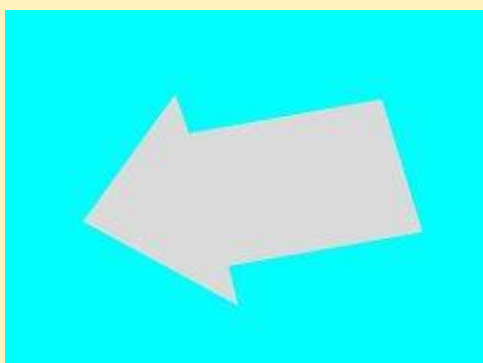
Pfeil-Orange_DU2



Pfeil-Pink_DU2



Pfeil-Rot_DU2



Pfeil-Weiss_DU2

25.07.2016

Sportwagen Jaguar E-Type

Rollmaterial:



E-Type_be_FF1
E-Type_be_FF1_drift



E-Type_gr_FF1
E-Type_gr_FF1_drift



E-Type_ro_FF1
E-Type_ro_FF1_drift

Immobilien:



E-Type_im_be_FF1



E-Type_im_gr_FF1



E-Type_im_ro_FF1

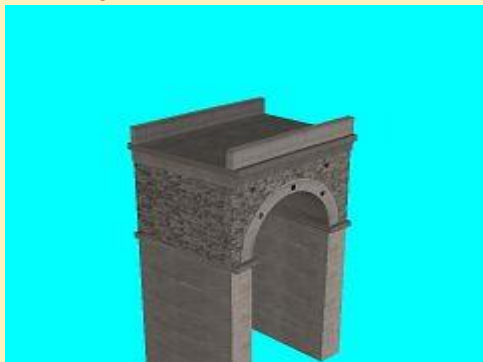
Vora-Shop
Trend-Shop

FF100084.zip
V60NFF10084.zip

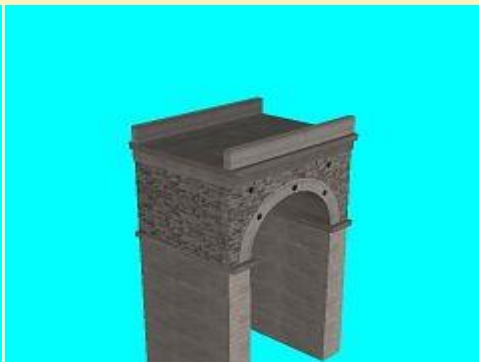
23.07.2016

Rumplergraben-Viadukt (Freemodell)

Gleisobjekte:

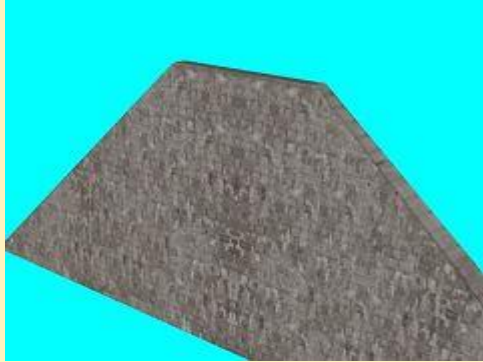


RumplergrViad_B_Bog_HB1

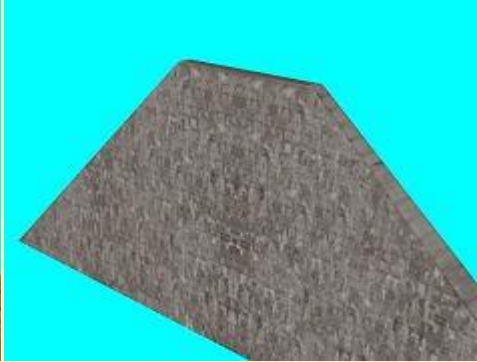


RumplergrViad_G_Bog_HB1

Immobilien:



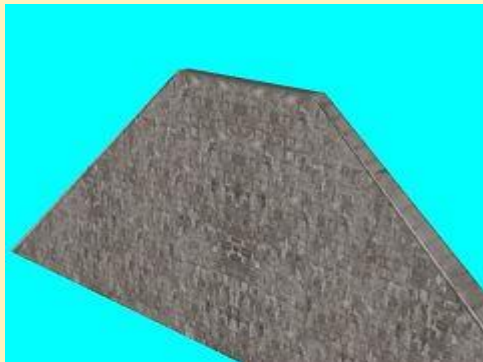
RumplergrViad_B_StM_Li_HB1



RumplergrViad_B_StM_Re_HB1



SemmeringViad_OL-Masten_HB1



RumplergrViad_G_StM_HB1

HB 1

hb1f047.zip

23.07.2016

Kalte Rinne-Viadukt

Gleisobjekte:



KalteRinneViad_B_Bog_HB1



KalteRinneViad_B_GM_HB1

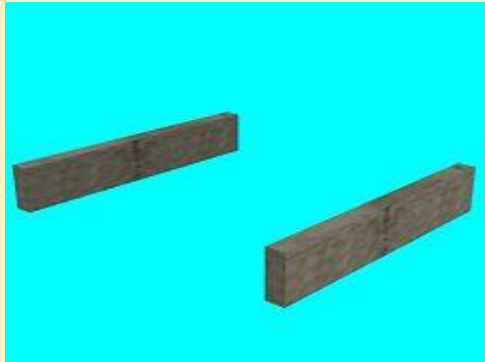


KalteRinneViad_G_Bog_HB1

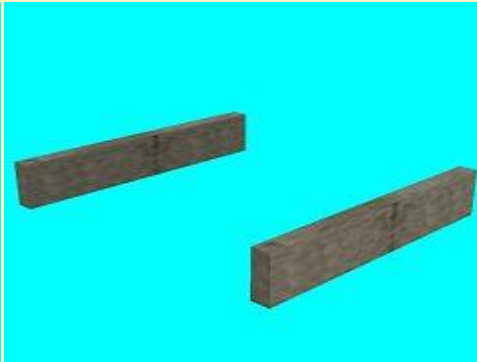


KalteRinneViad_G_GM_HB1

Immobilien:



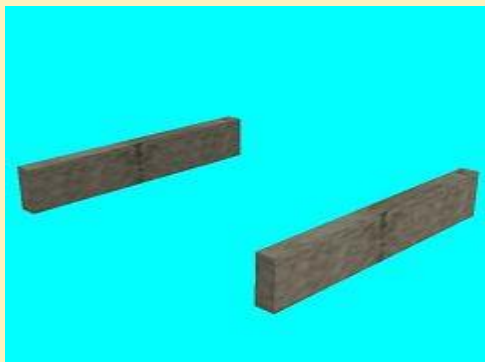
KalteRinneViad_B_GM-BrLi_HB1



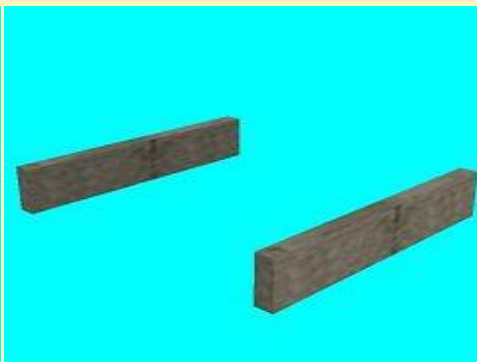
KalteRinneViad_B_GM-BrRe_HB1



SemmeringViad_OL-Masten_HB1



KalteRinneViad_G_GM-BrLi_HB1



KalteRinneViad_G_GM-BrRe_HB1

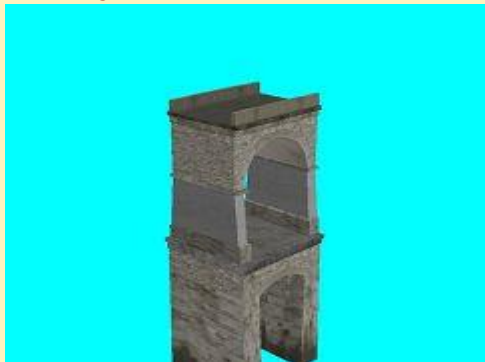
Vora-Shop
Trend-Shop

HB100119.zip
V60NHB10119.zip

23.07.2016

Krauselklause-Viadukt

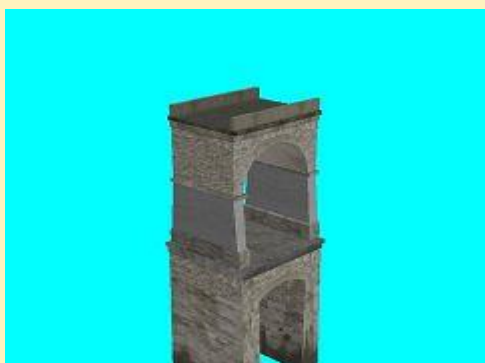
Gleisobjekte:



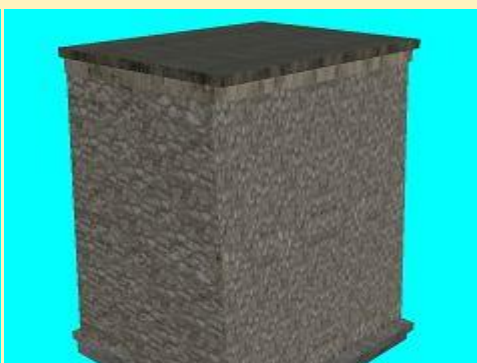
KrauselklauseViad_B_Bog_HB1



KrauselklauseViad_B_GM_HB1

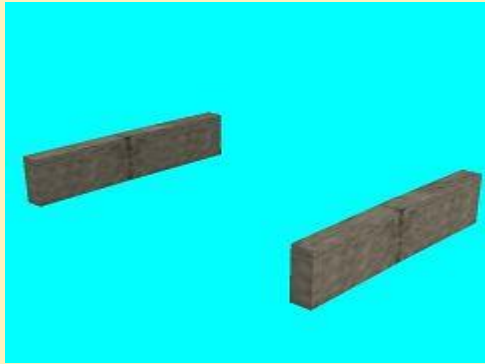


KrauselklauseViad_G_Bog_HB1

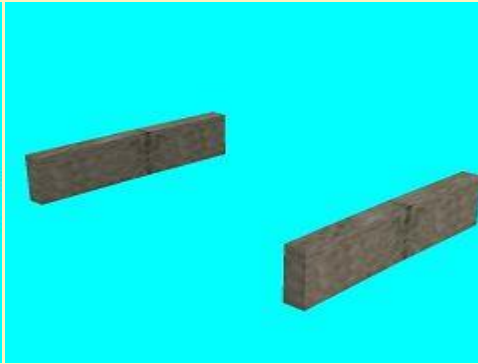


KrauselklauseViad_G_GM_HB1

Immobilien:



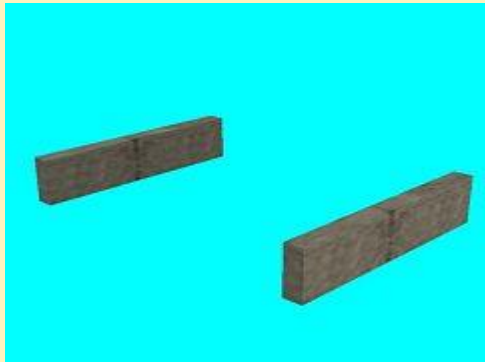
KrauselklausenViad_B_GM-BrLi_HB1



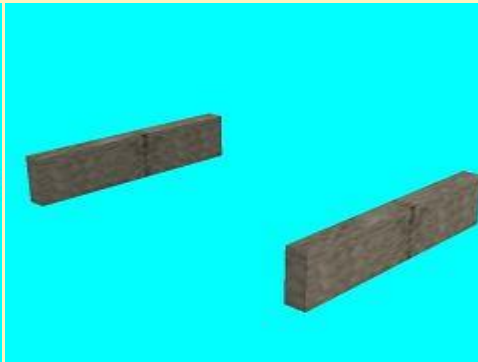
KrauselklausenViad_B_GM-BrRe_HB1



SemmeringViad_OL-Masten_HB1



KrauselklausenViad_G_GM-BrLi_HB1



KrauselklausenViad_G_GM-BrRe_HB1

Vora-Shop
Trend-Shop

HB100118.zip
V60NHB10118.zip

22.07.2016

Trimm-Dich-Schilder (Freemodell)



Schild-00_TdP_JE2



Schild-01_TdP_JE2



Schild-02_TdP_JE2



Schild-03_TdP_JE2



Schild-04_TdP_JE2



Schild-05_TdP_JE2



Schild-06_TdP_JE2



Schild-07_TdP_JE2



Schild-08_TdP_JE2



Schild-09_TdP_JE2



Schild-10_TdP_JE2



Schild-11_TdP_JE2



Schild-12_TdP_JE2



Schild-13_TdP_JE2



Schild-14_TdP_JE2



Schild-15_TdP_JE2



Schild-16_TdP_JE2



Schild-17_TdP_JE2



Schild-18_TdP_JE2



Schild-19_TdP_JE2



Schild-20_TdP_JE2



Schild-Go_Li_TdP_JE2



Schild-Go_Re_TdP_JE2



Schneedach_00-20_TdP_JE2



Schild-Start_TdP_JE2



Schild-Tour_TdP_JE2

Vora-Shop

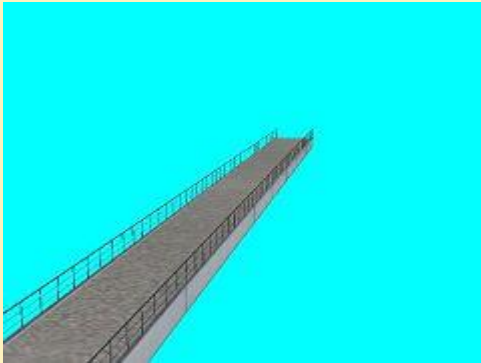
je2fr064.zip

21.07.2016

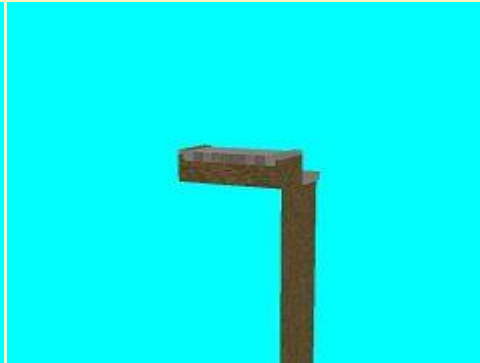
Treptower Spreebrücken

Auf der Homepage des Kons wird eine Textur mit höherer Auflösung zum freien Download angeboten.

Gleisobjekte:



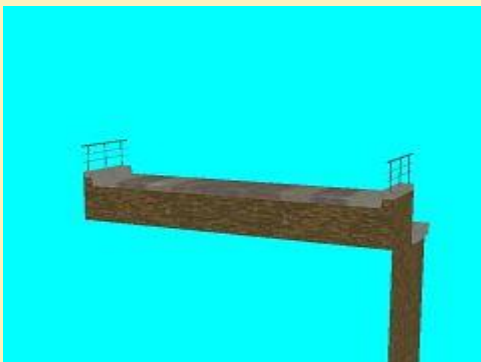
SR26_ParkwegBr_AF1



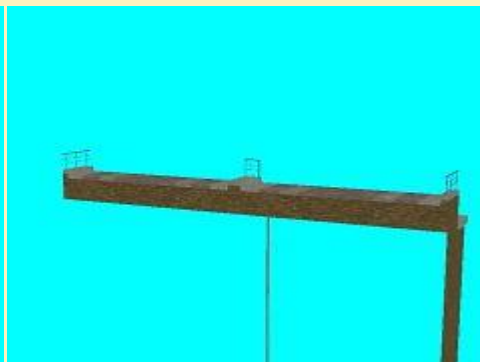
SR26_ParkwegBrKpf_li_AF1



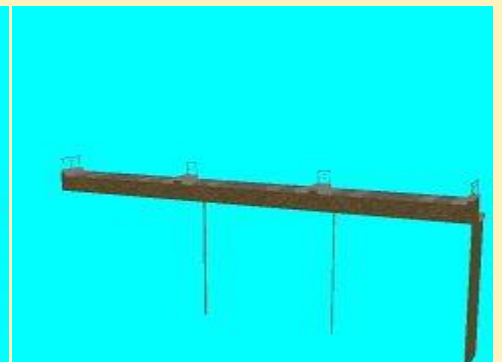
SR26_ParkwegBrKpf_re_AF1



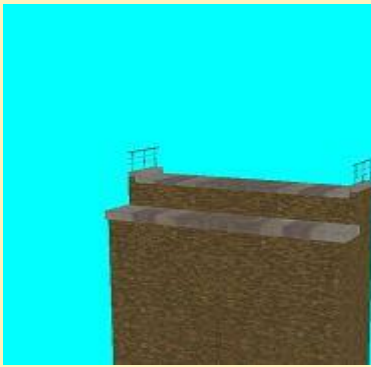
SR26_SpreeBrKpf_li_2_AF1



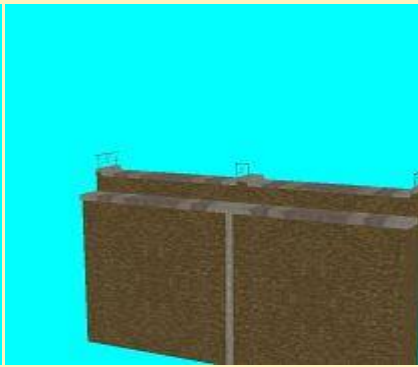
SR26_SpreeBrKpf_li_4_AF1



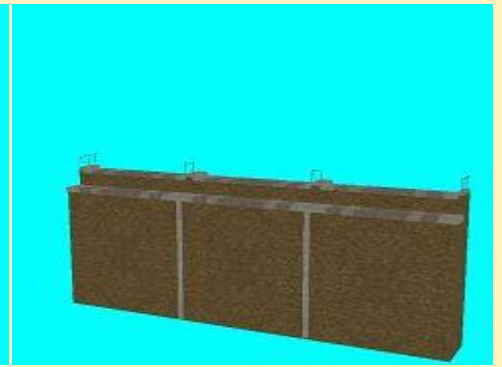
SR26_SpreeBrKpf_li_6_AF1



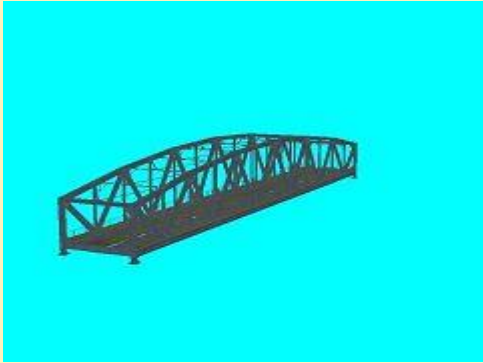
SR26_SpreeBrKpf_re_2_AF1



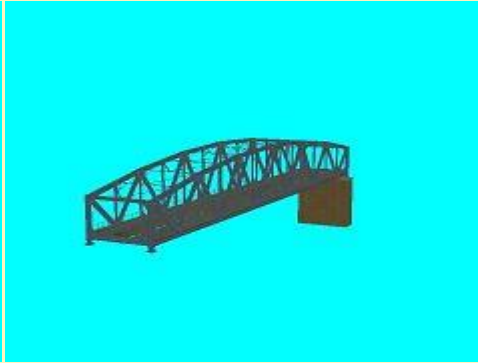
SR26_SpreeBrKpf_re_4_AF1



SR26_SpreeBrKpf_re_6_AF1



SR26_SpreeBr_AF1



SR26_SpreeBr_m_Pf_AF1

Immobilien:



SR26_gr_Pfeiler_AF1

Vora-Shop
Trend-Shop

AF100061.zip
V60NAF10061.zip

20.07.2016

BR 110 Kasten blau DB Epoche IV Set 12



DB_110-196-bl-EpIV_DB1-SK2



DB_110-214-bl-EpIV_DB1-SK2



DB_110-249-bl-EpIV_DB1-SK2

Vora-Shop
Trend-Shop

DB100266.zip
V60NDB10266.zip

20.07.2016

BR 110 Kasten blau DB Epoche IV Set 11



DB_110-121-bl-EpIV_DB1-SK2



DB_110-143-bl-EpIV_DB1-SK2



DB_110-147-bl-EpIV_DB1-SK2

Vora-Shop
Trend-Shop

DB100265.zip
V60NDB10265.zip

20.07.2016

BR 110 Kasten blau DB Epoche IV Set 10



DB_110-122-bl-EpIV_DB1-SK2



DB_110-125-bl-EpIV_DB1-SK2



DB_110-133-bl-EpIV_DB1-SK2

Vora-Shop
Trend-Shop

DB100264.zip
V60NDB10264.zip

13.07.2016

Stahlfachwerkbruecken Baukasten Set 8

Für Details die beiliegende Dokumentation beachten!

Wegen der hohen Spline-ID-Nrn. nur für EEP 6.1 (Classic) geeignet!

Stahlfachwerkbrücken

Baukasten Set 8

472 Modelle
40 Splines
3 Demoanlagen

[PDF-Dokumentation](#)

Stahlfachwerkbruecken Baukasten
Set 8 (Drehbrücken)

Vora-Shop

Trend-Shop

RT200009.zip

V60NRT20009.zip

05.07.2016

BR 110 Kasten blau DB Epoche IV Set 9



DB_110-101-bl-EpIV_DB1-SK2



DB_110-112-bl-EpIV_DB1-SK2



DB_110-159-bl-EpIV_DB1-SK2



DB_110-285-bl-EpIV_DB1-SK2

Vora-Shop

Trend-Shop

DB100263.zip

V60NDB10263.zip

05.07.2016

BR 110 Kasten blau DB Epoche IV Set 8



DB_110-177-bl-EpIV_DB1-SK2



DB_110-185-bl-EpIV_DB1-SK2



DB_110-192-bl-EpIV_DB1-SK2



DB_110-208-bl-EpIV_DB1-SK2

Vora-Shop
Trend-Shop

DB100262.zip
V60NDB10262.zip

05.07.2016

BR 110 Kasten blau DB Epoche IV Set 7



DB_110-152-bl-EpIV_DB1-SK2



DB_110-187-bl-EpIV_DB1-SK2



DB_110-194-bl-EpIV_DB1-SK2



DB_110-211-bl-EpIV_DB1-SK2

Vora-Shop

Trend-Shop

DB100261.zip

V60NDB10261.zip