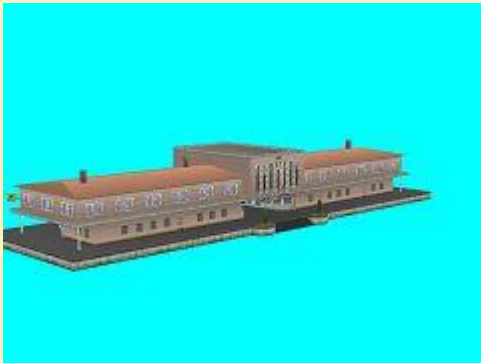


24.09.2016

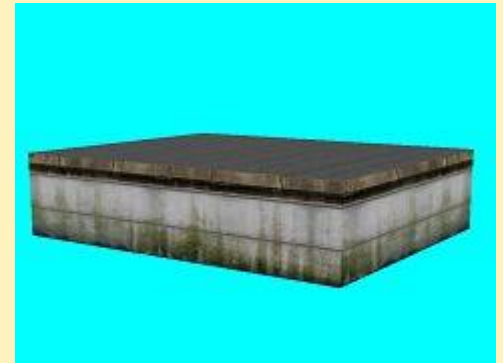
Bahnhof "Irgendwo" - Modellset



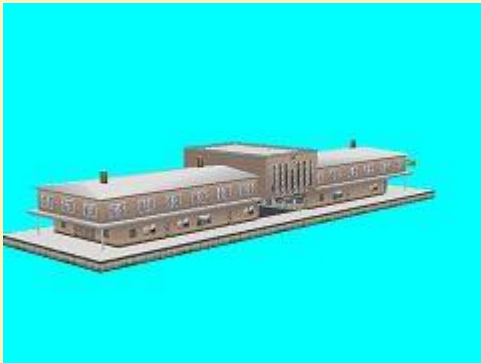
Bahnhof_Irgendwo_JE2



Stellwerk_Irgendwo_JE2



BStg_Bhf_Irgendwo_4m_JE2



Bahnhof_Irgendwo_Wi_JE2



Stellwerk_Irgendwo_Wi_JE2



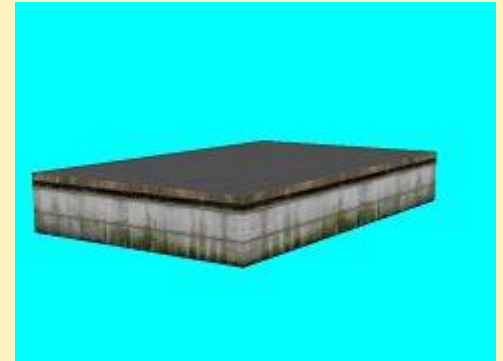
BStg_Bhf_Irgendwo_4m_Wi_JE2



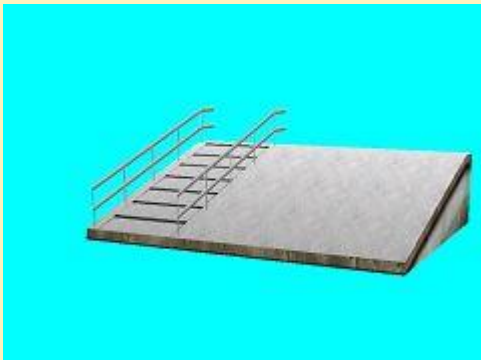
BStg__End_Bhf_Irgendwo_4m_JE2



BStg_Treppe_Bhf_Irgendwo_4m_JE2



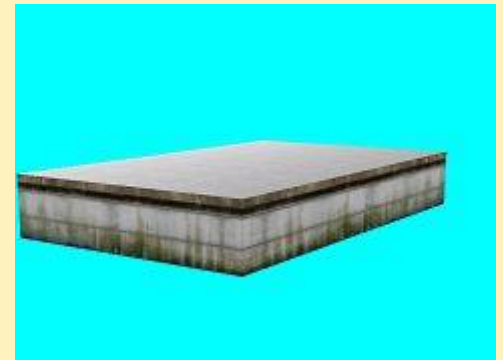
BStg_Bhf_Irgendwo_8m_JE2



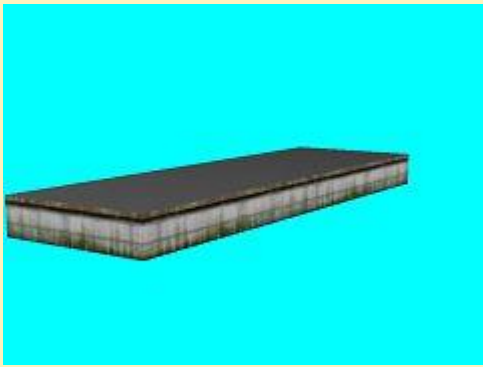
BStg__End_Bhf_Irgendwo_4m_
_Wi_JE2



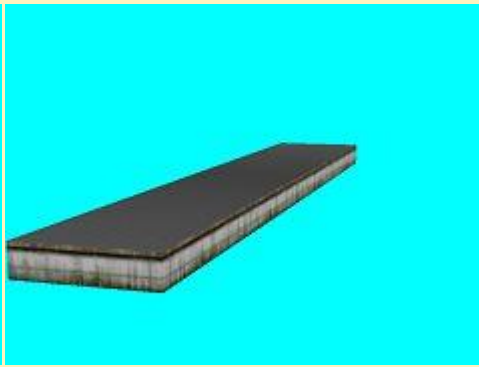
BStg_Treppe_Bhf_Irgendwo_4m_
_Wi_JE2



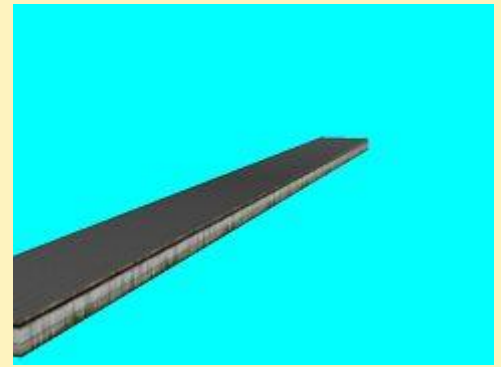
BStg_Bhf_Irgendwo_8m_Wi_JE2



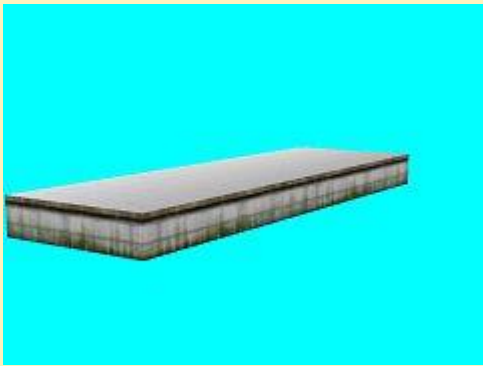
BSdg_Bhf_Irgendwo_16m_JE2



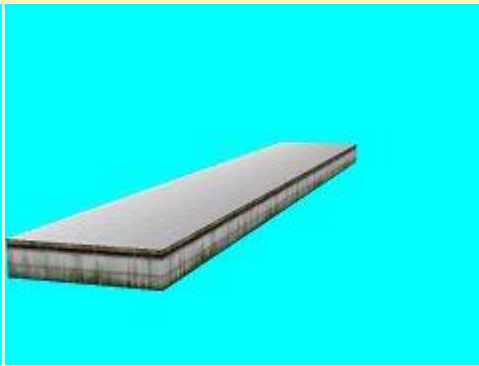
BSdg_Bhf_Irgendwo_32m_JE2



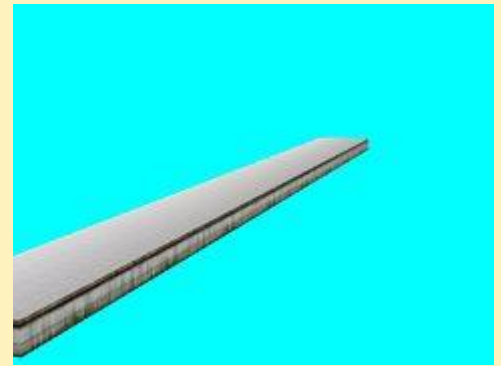
BSdg_Bhf_Irgendwo_64m_JE2



BSdg_Bhf_Irgendwo_16m_Wi_JE2



BSdg_Bhf_Irgendwo_32m_Wi_JE2



BSdg_Bhf_Irgendwo_64m_Wi_JE2

Vora-Shop

JE200103.zip

24.09.2016

Imbiss-Marktstand



Imbis_Marktstand_JE2



Imbis_Marktstand_Wi_JE2



Imbiss_Stehtisch_JE2

Vora-Shop

JE200102.zip

22.09.2016

E-Lok DB102 002 von Skoda



DB102_002_MK1

Vora-Shop
Trend-Shop

MK100209.zip
V60NMK10209.zip

21.09.2016

Taurus_Lok DB182_100 im IC-Outfit



DB182_100_MK1

Vora-Shop
Trend-Shop

MK100208.zip
V60NMK10208.zip

21.09.2016

Luftkissenboot



Luftkissenboot_JE2



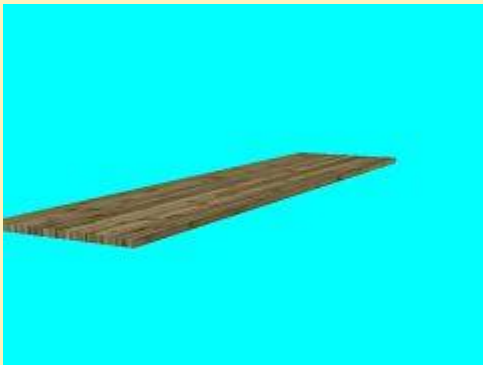
Luftkissenboot_IMO_JE2

Vora-Shop

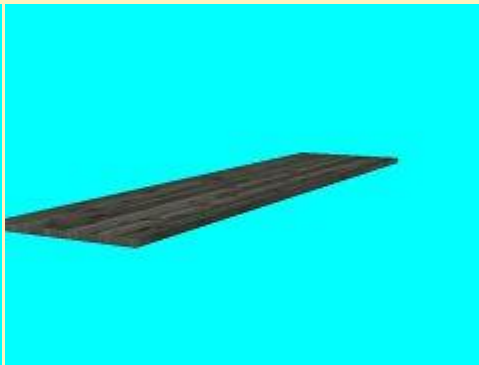
JE200101.zip

19.09.2016

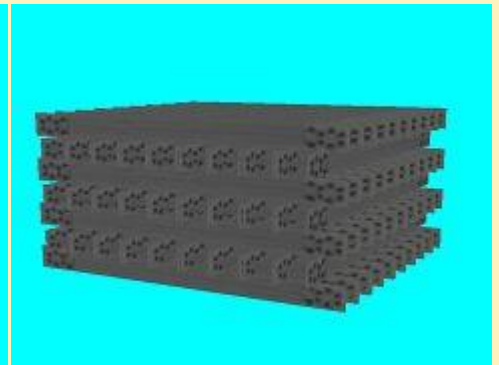
Material- und Baulager für Behelfsbrücken aus R - Gerät (Freemodell)



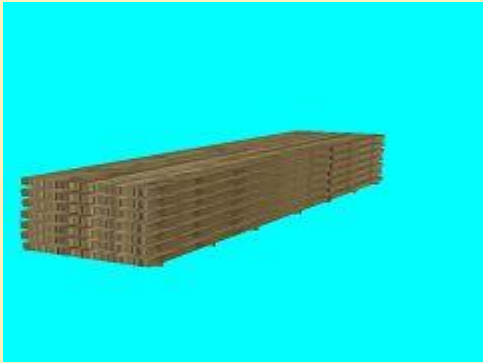
R_Brett_b_AF1



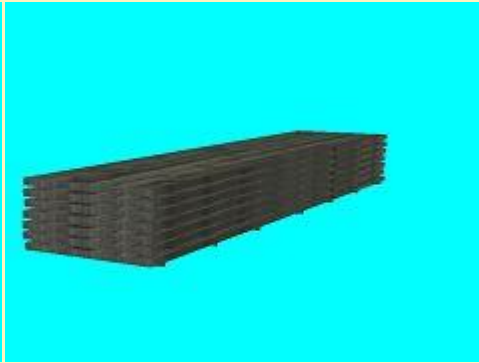
R_Brett_g_AF1



R_K_Streben_AF1



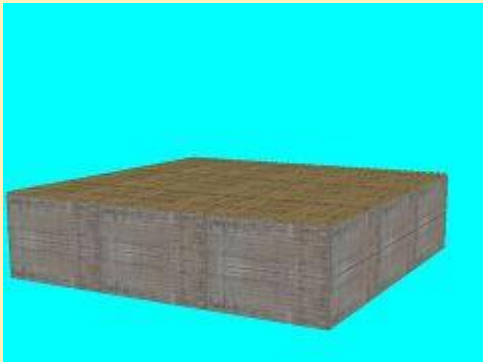
R_Planken_b_AF1



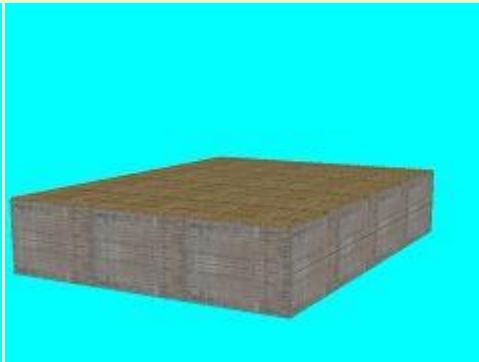
R_Planken_g_AF1



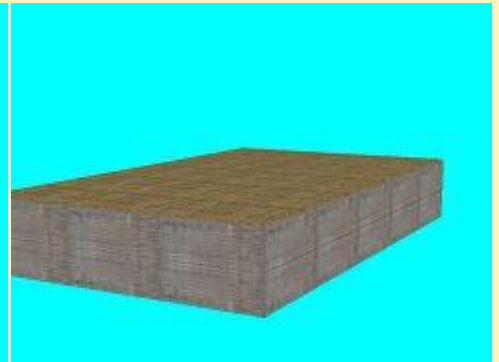
R_Portalstrebe_AF1



R_Sockel_3x3_AF1



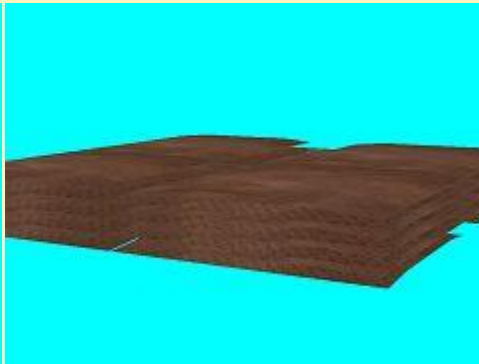
R_Sockel_4x3_AF1



R_Sockel_5x3_AF1



R_Quertraeger_AF1



R_Stahlblech_AF1

AF 1

Baulager_EEP_6.zip

17.09.2016

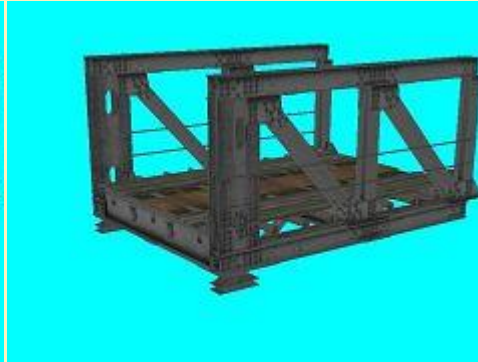
Behelfsbrücke aus R-Gerät (eingeschossig, Typ Gleis unten)

Neben den Modellen sind zwei passende Splines und eine Demo-Anlage enthalten. Die Kodierung der Modelle ist in der beiliegenden PDF-Datei erklärt.

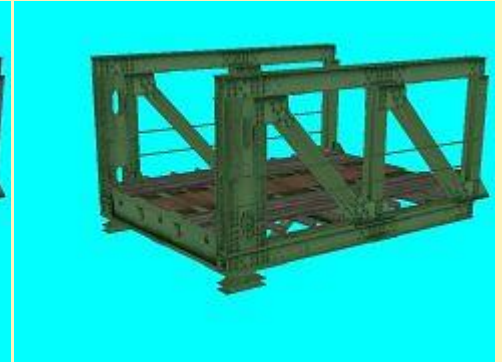
Gleisobjekte:



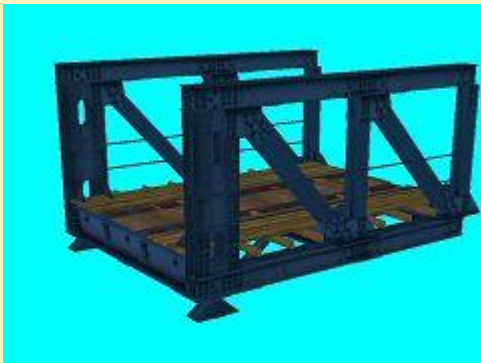
R_b_A_bA_AF1



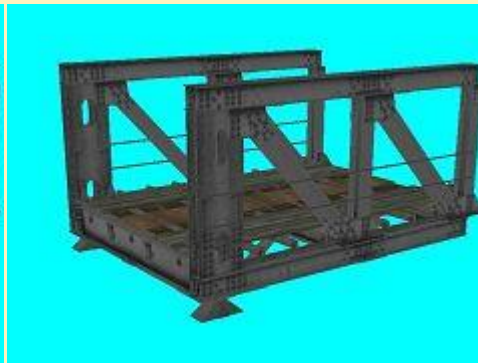
R_e_A_bA_AF1



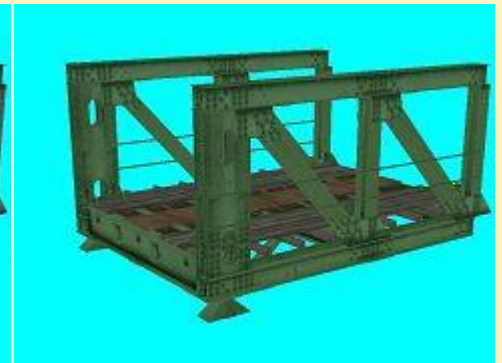
R_g_A_bA_AF1



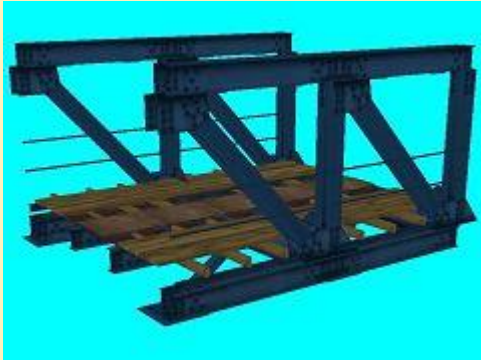
R_b_A_fA_AF1



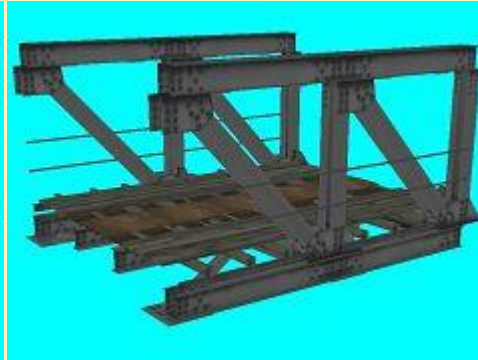
R_e_A_fA_AF1



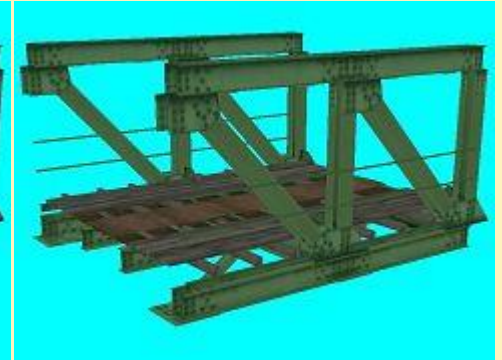
R_g_A_fA_AF1



R_b_B_AF1



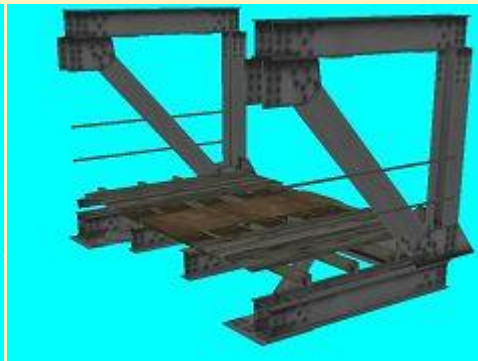
R_e_B_AF1



R_g_B_AF1



R_b_B_3m_AF1



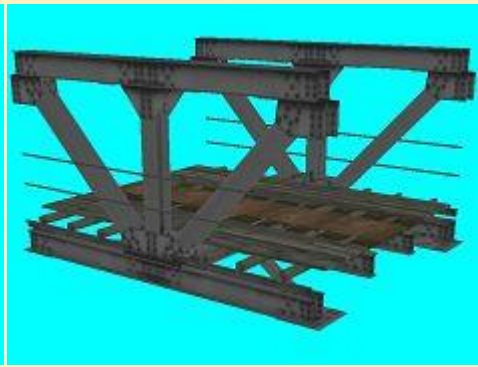
R_e_B_3m_AF1



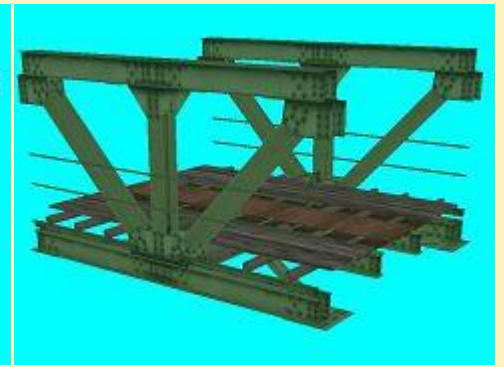
R_g_B_3m_AF1



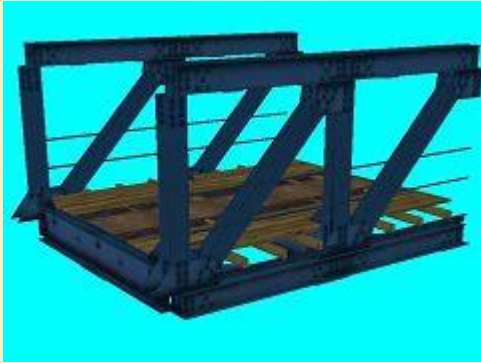
R_b_C_AF1



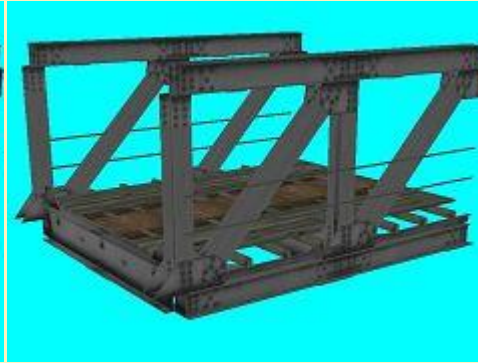
R_e_C_AF1



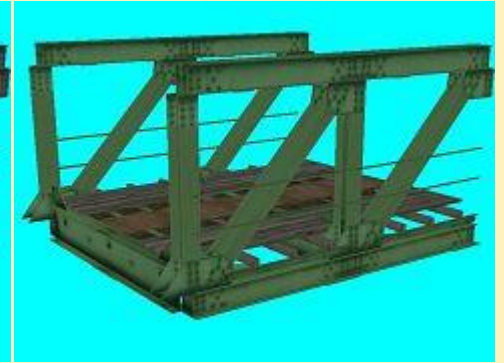
R_g_C_AF1



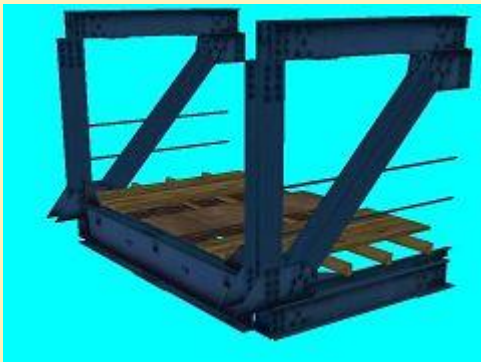
R_b_D_AF1



R_e_D_AF1



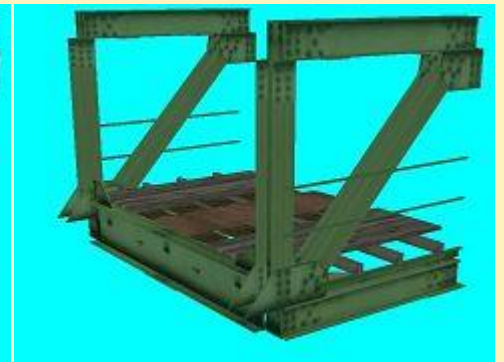
R_g_D_AF1



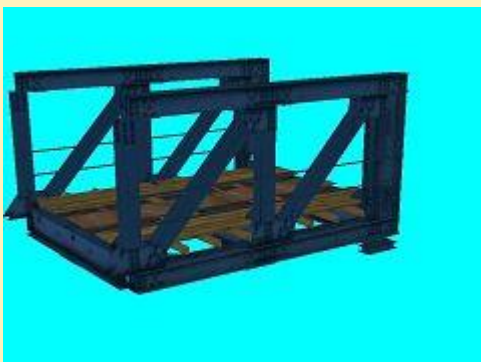
R_b_D_3m_AF1



R_e_D_3m_AF1



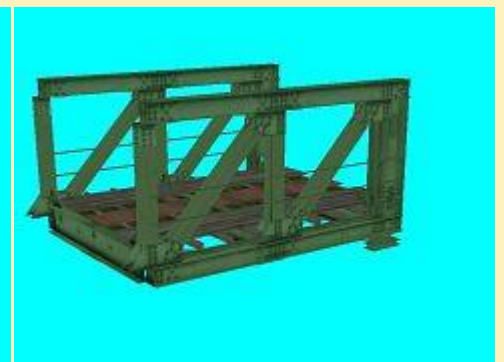
R_g_D_3m_AF1



R_b_E_bA_AF1



R_e_E_bA_AF1



R_g_E_bA_AF1



R_b_E_bA_Pf_1_AF1



R_e_E_bA_Pf_1_AF1



R_g_E_bA_Pf_1_AF1



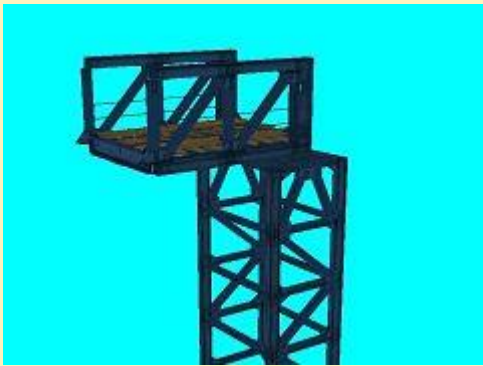
R_b_E_bA_Pf_2_AF1



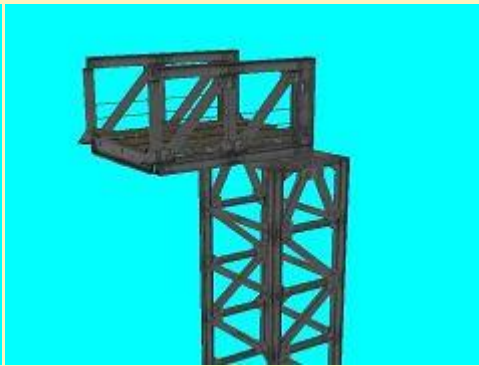
R_e_E_bA_Pf_2_AF1



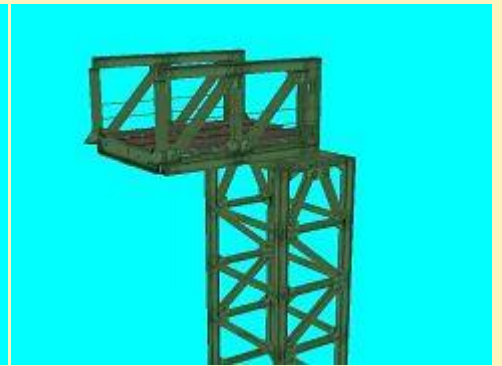
R_g_E_bA_Pf_2_AF1



R_b_E_bA_St_AF1



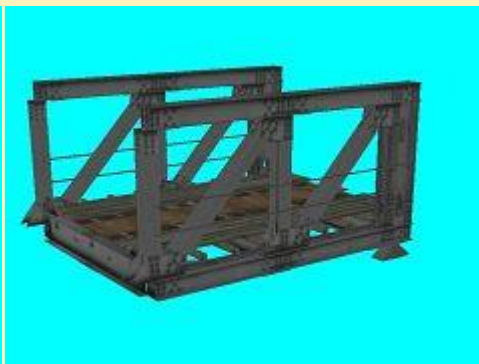
R_e_E_bA_St_AF1



R_g_E_bA_St_AF1



R_b_E_fA_AF1



R_e_E_fA_AF1



R_g_E_fA_AF1



R_b_E_fA_Pf_1_AF1



R_e_E_fA_Pf_1_AF1



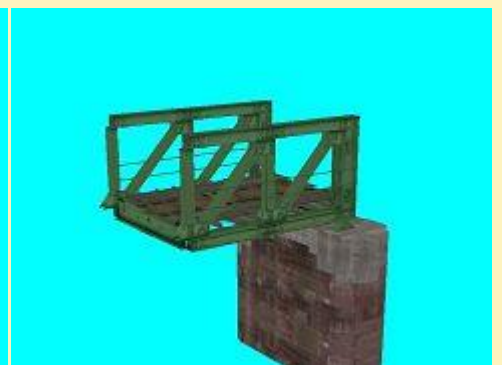
R_g_E_fA_Pf_1_AF1



R_b_E_fA_Pf_2_AF1



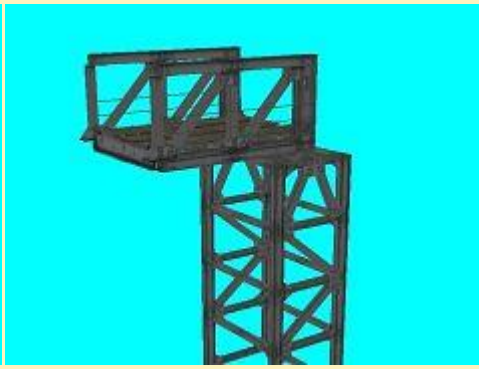
R_e_E_fA_Pf_2_AF1



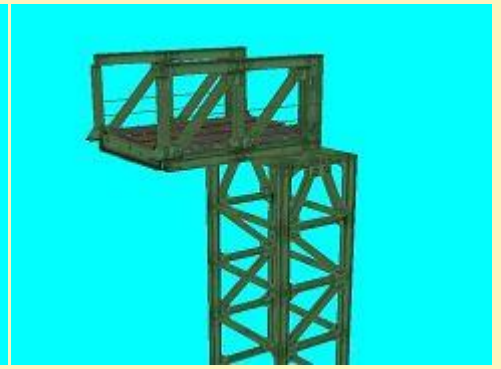
R_g_E_fA_Pf_2_AF1



R_b_E_fA_St_AF1



R_e_E_fA_St_AF1



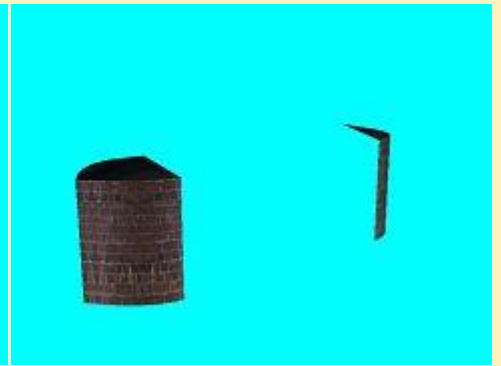
R_g_E_fA_St_AF1



R_Bogen_R_AF1



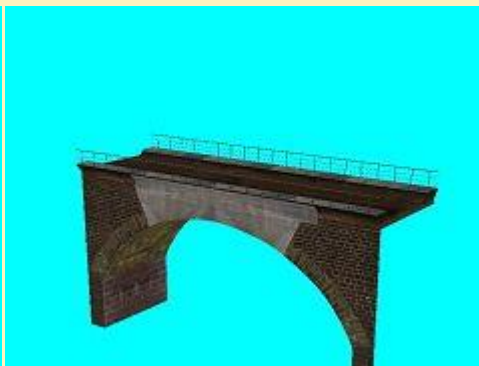
R_Bogen_R_B_AF1



R_BPf_3_Schutz_li_AF1



R_Bogen_G_AF1



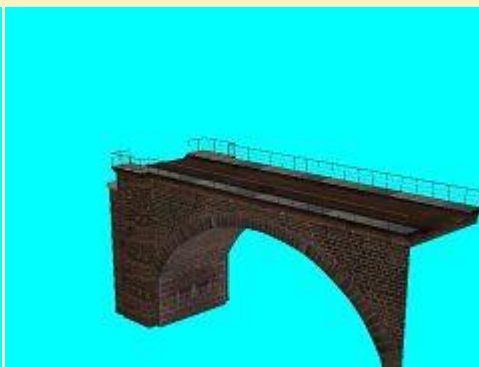
R_Bogen_G_B_AF1



R_BPf_3_Schutz_re_AF1



R_BrKpf_B_F_R_li_AF1



R_BrKpf_F_B_R_re_AF1



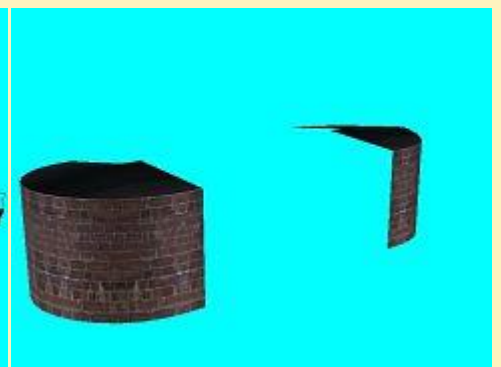
R_BPf_4_Schutz_li_AF1



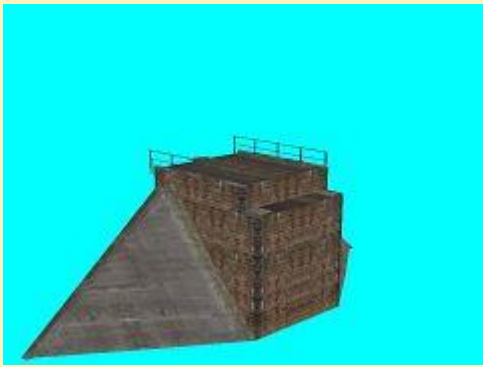
R_BrKpf_B_F_G_li_AF1



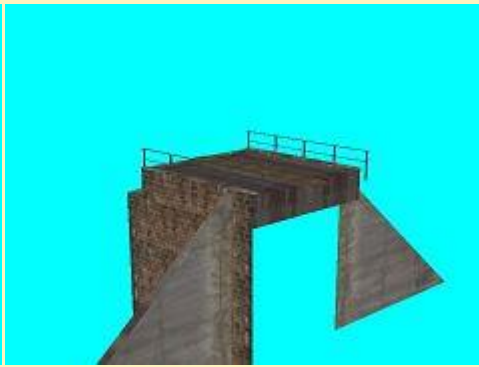
R_BrKpf_F_B_G_re_AF1



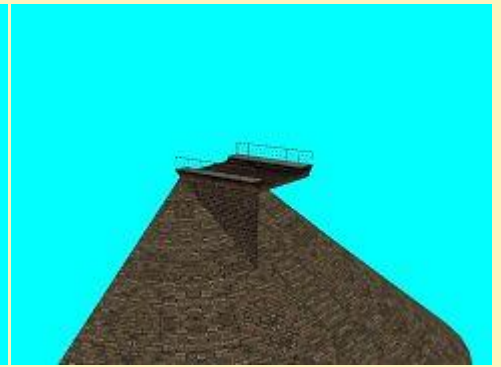
R_BPf_4_Schutz_re_AF1



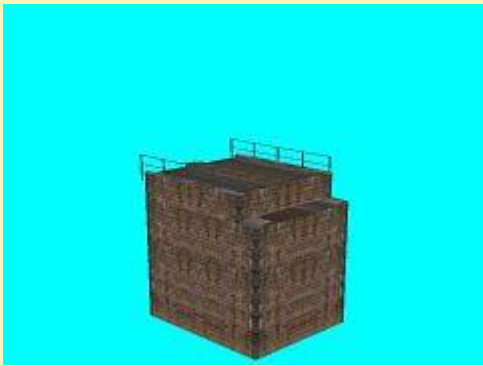
R_BrKpf_D_F_i_li_mM_AF1



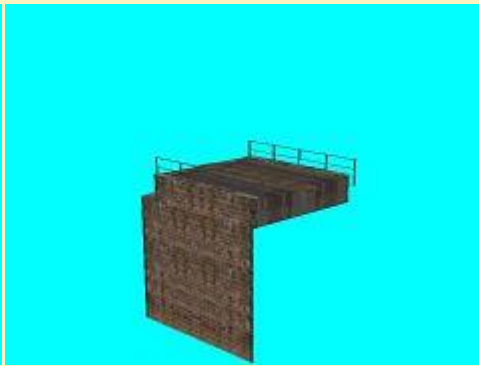
R_BrKpf_F_D_i_re_mM_AF1



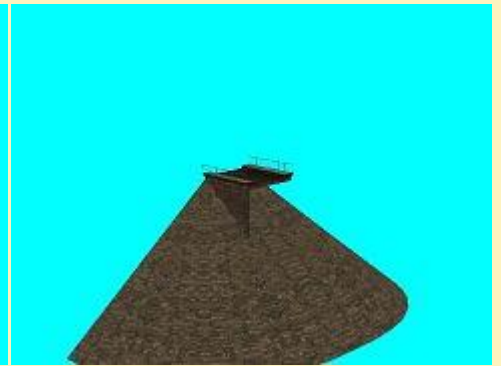
R_B_D_re_AF1



R_BrKpf_D_F_i_li_oM_AG1



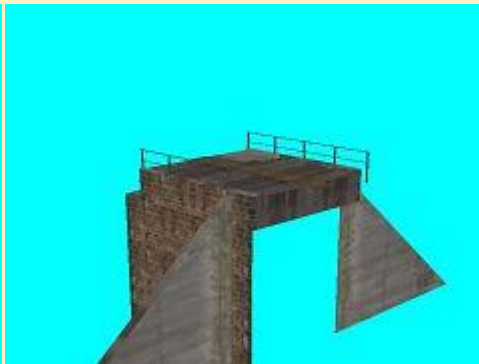
R_BrKpf_F_D_i_re_oM_AF1



R_D_B_li_AF1



R_BrKpf_D_F_r_li_mM_AF1



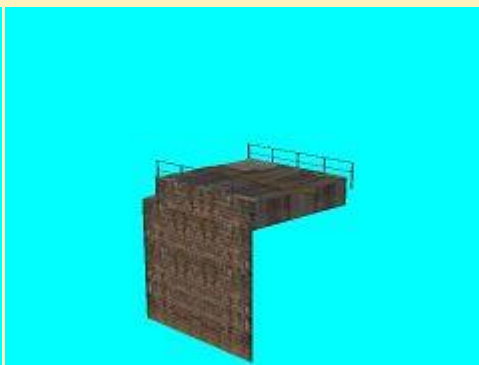
R_BrKpf_F_D_r_re_mM_AF1



R_BrKpf2_D_F_li_AF1



R_BrKpf_D_F_r_li_oM_AF1

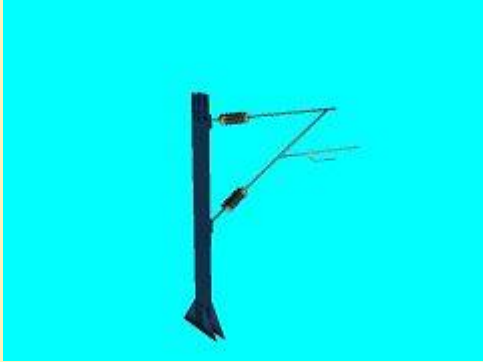


R_BrKpf_F_D_r_re_oM_AF1



R_BrKpf2_F_D_re_AF1

Immobilien:



R_b_Ol_Mast_AF1



R_e_Ol_Mast_AF1



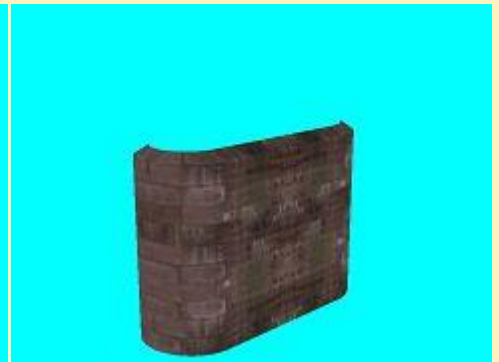
R_g_Ol_Mast_AF1



R_Pf_1_Schutz_vo_AF1



R_Pf_1_Schutz_hi_AF1



R_Pf_Flut_Sockel_vo_AF1



R_Pf_2_Schutz_vo_AF1



R_Pf_2_Schutz_hi_AF1



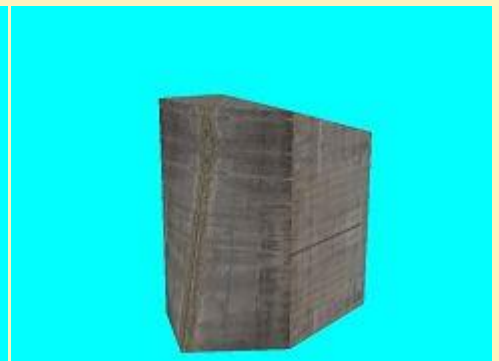
R_Pf_Flut_Sockel_hi_AF1



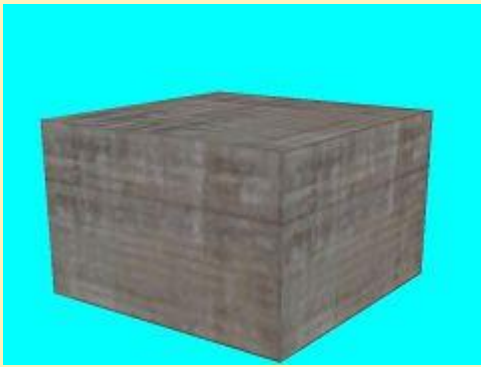
R_Pf_Sockel_AF1



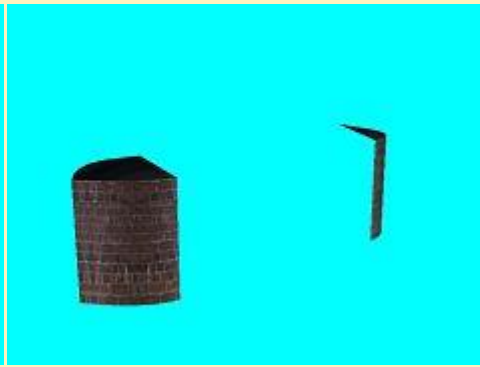
R_St_Flutsocket_vo_AF1



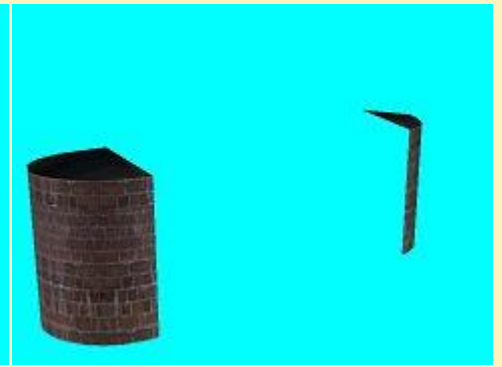
R_St_Flutsocket_hi_AF1



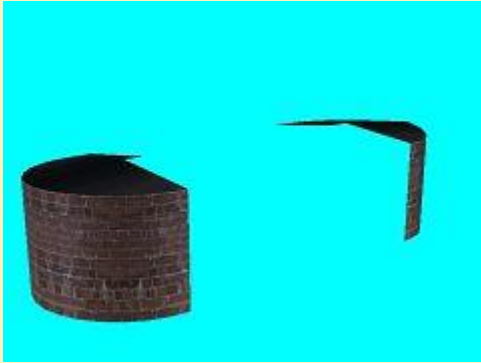
R_St_Sockel_AF1



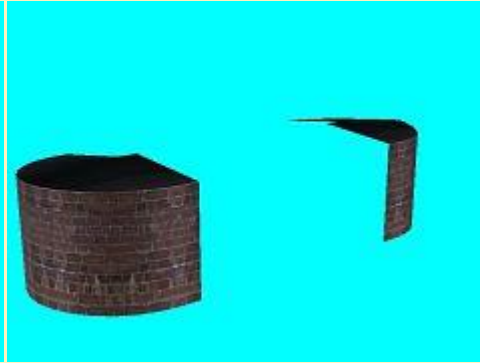
R_BPf_3_Schutz_li_AF1



R_BPf_3_Schutz_re_AF1



R_BPf_4_Schutz_li_AF1



R_BPf_4_Schutz_re_AF1

Vora-Shop
Trend-Shop

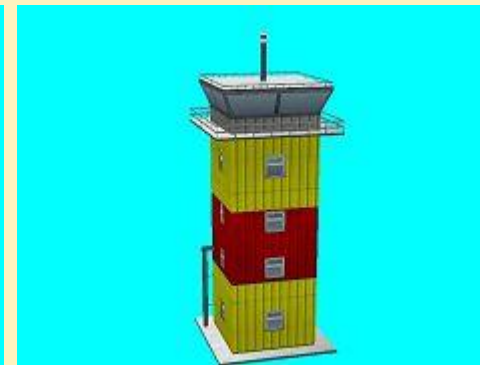
AF100062.zip
V60NAF10062.zip

16.09.2016

Flugplatz-Tower und Garage



Flugplatz_Tower_JE2



Flugplatz_Tower_Wi_JE2



Flugplatz_Tower_Garage_JE2



Flugplatz_Tower_Garage_Wi_JE2

Vora-Shop

JE200100.zip

16.09.2016

Sanatorium und Reha-Klinik Tannenhof



Sanatorium_Tannenhof_JE2



Sanatorium_Tannenhof_Wi_JE2

Vora-Shop

JE200099.zip

13.09.2016

Ponderosa-Ranch



Ponderosa_Ranch_JE2



Ponderosa_Ranch_Wi_JE2



Ponderosa_Pferdeanbindung_JE2



Ponderosa_Kennung_JE2



Ponderosa_Kennung_Wi_JE2

Vora-Shop

JE200098.zip

13.09.2016

US-Krankenhaus



US_Krankenhaus_JE2



US_Krankenhaus_Wi_JE2

Vora-Shop

JE200097.zip

13.09.2016

US-Grundschule



US_Grundschule_JE2



US_Grundschule_Wi_JE2

Vora-Shop

JE200096.zip

13.09.2016

Hektometertafeln Erweiterung 2

Enthalten sind die Tafeln von Kilometer 71_0 bis 119_8 (245 Modelle).



Hektometertafel_71-0_DB1

Vora-Shop

DB100273.zip

Trend-Shop

V60NDB10273.zip

13.09.2016

E-Lok 483 102 Nordcargo/DBAG Epoche VI



DBAG_483-102-EpVI_DB1-SK2

Vora-Shop
Trend-Shop

DB100272.zip
V60NDB10272.zip

13.09.2016

E-Lok BR 483 Nordcargo Epoche VI Set 2



NC_483-104-EpVI_DB1-SK2



NC_483-106-EpVI_DB1-SK2



NC_483-107-EpVI_DB1-SK2



NC_483-108-EpVI_DB1-SK2

Vora-Shop
Trend-Shop

DB100271.zip
V60NDB10271.zip

13.09.2016

E-Lok BR 483 Nordcargo Epoche VI Set 1



NC_483-101-EpVI_DB1-SK2



NC_483-102-EpVI_DB1-SK2



NC_483-103-EpVI_DB1-SK2



NC_483-105-EpVI_DB1-SK2

Vora-Shop
Trend-Shop

DB100270.zip
V60NDB10270.zip

11.09.2016

Ärztehaus



Aerztehaus_JE2



Aerztehaus_Wi_JE2

Vora-Shop

JE200095.zip

11.09.2016

Kleinstadt-Kino



Kleinstadt_Kino_JE2



Kleinstadt-Kino_Wi_JE2

Vora-Shop

JE200094.zip