

28.03.2017

Anlage Nahverkehrsknoten Stralau-Rummelsburg 1926 (Berlin) - Vollversion



Stralau - Rummelsburg 1926 mit Dampf-Stadtbahn



SR 26 ist die "Vorgänger-Anlage" zu Ostkreuz 1961

Aufgrund der Masse an Modellen (>1000 *.gsb-Dateien) wird die Anlage auf einer eigenen Seite vorgestellt.

25.03.2017

Bergkapelle 2 - Set



Bergkapelle_2_JE2



Bergkapelle_2_Glocke_JE2



Bergkapelle_2_Remise_JE2



Bergkapelle_2_Wi_JE2



Bergkapelle_2_Glocke_Wi_JE2



Bergkapelle_2_Remise_Wi_JE2

Vora-Shop

JE200135.zip

25.03.2017

Hotel Fürstenegger Hof



Hotel_Fuerstenegger_Hof_JE2



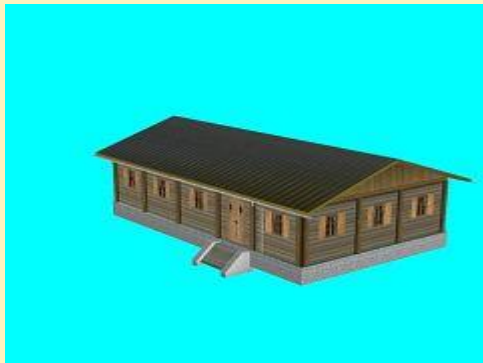
Hotel_Fuerstenegger_Hof_Wi_JE2

Vora-Shop

JE200134.zip

18.03.2017

Almhütte 3



Almhuetten3_MK2



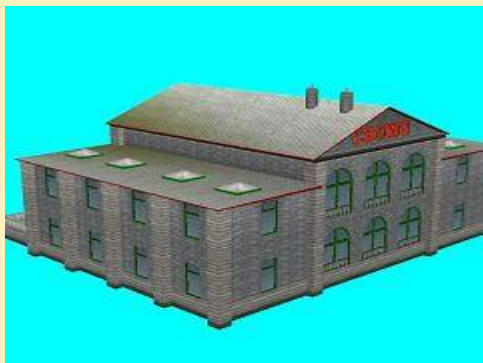
Almhuetten3-wi_MK2

Vora-Shop

mk200069.zip

13.03.2017

Casino_1



Casino_1_JE2



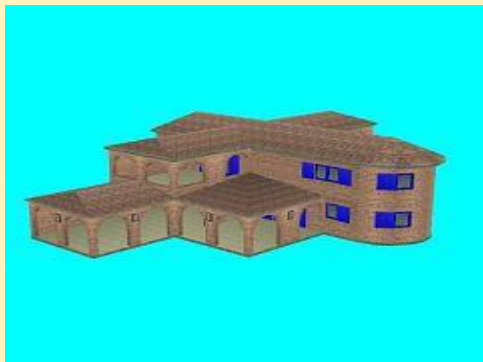
Casino_1_Wi_JE2

Vora-Shop

JE200133.zip

13.03.2017

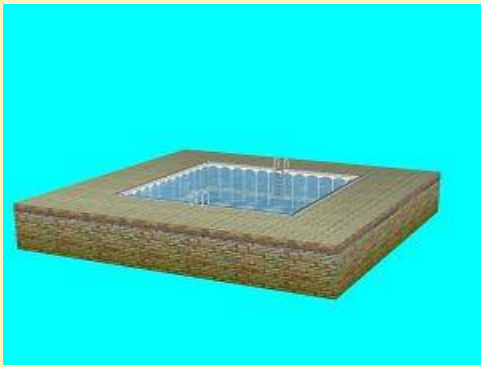
Finka Don Carlos



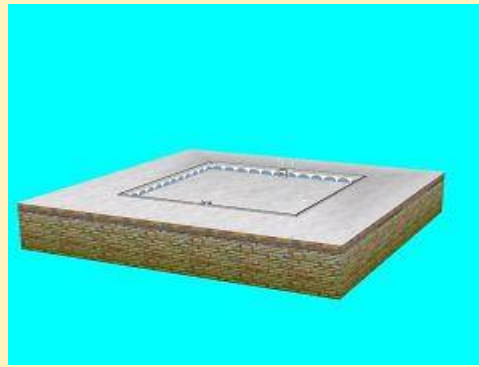
Finka_Don_Carlos_JE2



Finka_Don_Carlos_Wi_JE2



Pool_Finka_DonCarlos_JE2



Pool_Finka_DonCarlos_Wi_JE2

Vora-Shop

JE200132.zip

11.03.2017

Vectron E-Lok 193 850 boxXpress



Vectron_193_850_MK1

Vora-Shop

MK100216.zip

Trend-Shop

V60NMK10216.zip

09.03.2017

Vierachsige Containertragwagen Typ Sgnss 60 SBB



SBB_Sgnss-Lad01_DB1



SBB_Sgnss-Lad02_DB1



SBB_Sgnss-Lad03_DB1



SBB_Sgnss-Lad04_DB1



SBB_Sgnss-Lad05_DB1



SBB_Sgnss-Lad06_DB1



SBB_Sgnss-Lad07_DB1



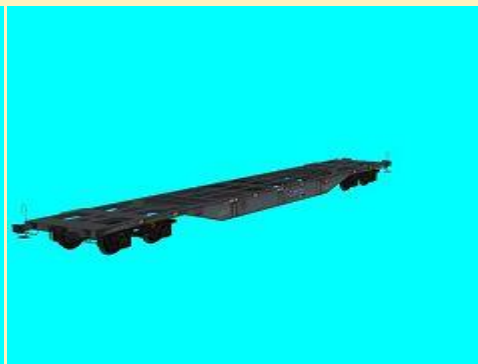
SBB_Sgnss-Lad08_DB1



SBB_Sgnss-Lad09_DB1



SBB_Sgnss-Lad10_DB1



SBB_Sgnss-leer_DB1

Vora-Shop
Trend-Shop

DB100283.zip
V60NDB10283.zip

09.03.2017

Zweiteilige Containertragwagen Typ Sggrss 80 TSSC/RLL



TSSC-RRL_Sggrss-1A-Lad01_DB1



TSSC-RRL_Sggrss-1B-Lad01_DB1



TSSC-RRL_Sggrss-1A-Lad02_DB1



TSSC-RRL_Sggrss-1B-Lad02_DB1



TSSC-RRL_Sggrss-1A-Lad03_DB1



TSSC-RRL_Sggrss-1B-Lad03_DB1



TSSC-RRL_Sggrss-1A-Lad04_DB1



TSSC-RRL_Sggrss-1B-Lad04_DB1



TSSC-RRL_Sggrss-1A-Lad05_DB1



TSSC-RRL_Sggrss-1B-Lad05_DB1



TSSC-RRL_Sggrss-1A-Lad06_DB1



TSSC-RRL_Sggrss-1B-Lad06_DB1



TSSC-RRL_Sggrss-1A-Lad07_DB1



TSSC-RRL_Sggrss-1B-Lad07_DB1



TSSC-RRL_Sggrss-1A-Lad08_DB1



TSSC-RRL_Sggrss-1B-Lad08_DB1



TSSC-RRL_Sggrss-1A-Lad09_DB1



TSSC-RRL_Sggrss-1B-Lad09_DB1



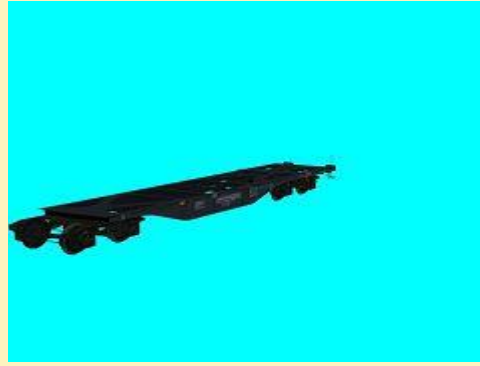
TSSC-RRL_Sggrss-1A-Lad10_DB1



TSSC-RRL_Sggrss-1B-Lad10_DB1



TSSC-RRL_Sggrss-1A-leer_DB1



TSSC-RRL_Sggrss-1B-leer_DB1

Vora-Shop
Trend-Shop

DB100282.zip
V60NDB10282.zip

09.03.2017

Zweiteilige Containertragwagen Typ Sggrss 80 RailLogix/RRL



RailLogix-RRL_Sggrss-1A-Lad01_DB1



RailLogix-RRL_Sggrss-1B-Lad01_DB1



RailLogix-RRL_Sggrss-1A-Lad02_DB1



RailLogix-RRL_Sggrss-1B-Lad02_DB1



RailLogix-RRL_Sggrss-1A-Lad03_DB1



RailLogix-RRL_Sggrss-1B-Lad03_DB1



RailLogix-RRL_Sggrss-1A-
Lad04_DB1



RailLogix-RRL_Sggrss-1B-
Lad04_DB1



RailLogix-RRL_Sggrss-1A-
Lad05_DB1



RailLogix-RRL_Sggrss-1B-
Lad05_DB1



RailLogix-RRL_Sggrss-1A-
Lad06_DB1



RailLogix-RRL_Sggrss-1B-
Lad06_DB1



RailLogix-RRL_Sggrss-1A-
Lad07_DB1



RailLogix-RRL_Sggrss-1B-
Lad07_DB1



RailLogix-RRL_Sggrss-1A-
Lad08_DB1



RailLogix-RRL_Sggrss-1B-
Lad08_DB1



RailLogix-RRL_Sggrss-1A-
Lad09_DB1



RailLogix-RRL_Sggrss-1B-
Lad09_DB1



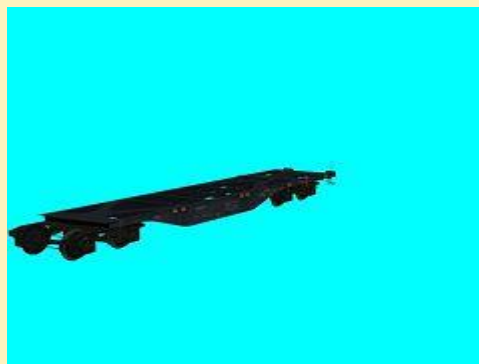
RailLogix-RRL_Sggrss-1A-
Lad10_DB1



RailLogix-RRL_Sggrss-1B-
Lad10_DB1



RailLogix-RRL_Sggrss-1A-leer_DB1



RailLogix-RRL_Sggrss-1B-leer_DB1

Vora-Shop
Trend-Shop

DB100281.zip
V60NDB10281.zip

09.03.2017

Zweiteilige Containertragwagen Typ Sggmrss 90 ITL



ITL_Sggmrss-1A-Lad01_DB1



ITL_Sggmrss-1B-Lad01_DB1



ITL_Sggmrss-1A-Lad02_DB1



ITL_Sggmrss-1B-Lad02_DB1



ITL_Sggmrss-1A-Lad03_DB1



ITL_Sggmrss-1B-Lad03_DB1



ITL_Sggmrss-1A-Lad04_DB1



ITL_Sggmrss-1B-Lad04_DB1



ITL_Sggmrss-1A-Lad05_DB1



ITL_Sggmrss-1B-Lad05_DB1



ITL_Sggmrss-1A-Lad06_DB1



ITL_Sggmrss-1B-Lad06_DB1



ITL_Sggmrss-1A-Lad07_DB1



ITL_Sggmrss-1B-Lad07_DB1



ITL_Sggmrss-1A-Lad08_DB1



ITL_Sggmrss-1B-Lad08_DB1



ITL_Sggmrss-1A-Lad09_DB1



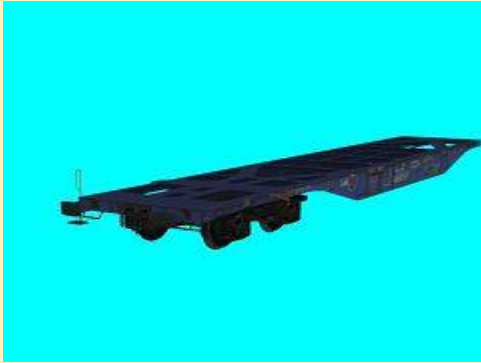
ITL_Sggmrss-1B-Lad09_DB1



ITL_Sggmrss-1A-Lad10_DB1



ITL_Sggmrss-1B-Lad10_DB1



ITL_Sggmrss-1A-leer_DB1



ITL_Sggmrss-1B-leer_DB1

Vora-Shop
Trend-Shop

DB100280.zip
V60NDB10280.zip

07.03.2017

Vectron E-Lok der MRCE



Vectron_MRCE_MK1

Vora-Shop
Trend-Shop

MK100215.zip
V60NMK10215.zip

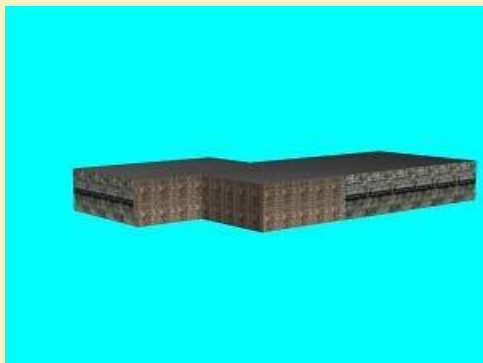
07.03.2017
Ferienhaus01



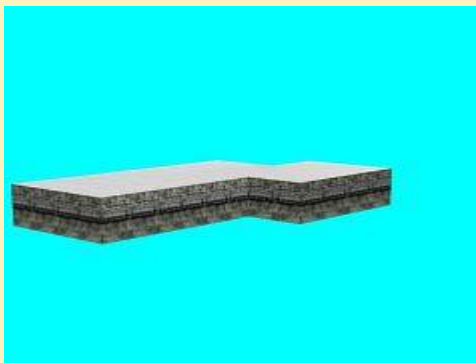
Ferienhaus_01_JE2



Ferienhaus_01_Wi_JE2



Ferienhaus_01_Sockel_JE2



Ferienhaus_01_Sockel_Wi_JE2

Vora-Shop

JE200131.zip

03.03.2017
Dreiseitenkipper

Rollmaterial:



ST_380_I_Dreiseitkipper_rot_FF1



ST_380_II_Dreiseitkipper_blau_FF1



ST_380_II_Dreiseitkipper_rot_FF1

Immobilien:



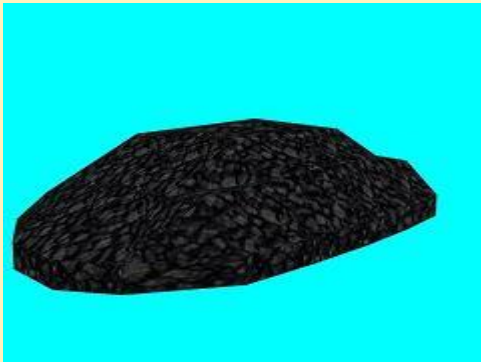
ST_380_I_Dreiseitkipper_im_rot_FF1



ST_380_II_Dreiseitkipper_im_blau_FF1



ST_380_II_Dreiseitkipper_im_rot_FF1



Kohlehaufen_langsam_versenkbar_FF1



Sandhaufen_langsam_versenkbar_FF1

Vora-Shop
Trend-Shop

FF100092.zip
V60NFF10092.zip