

31.05.2017

**Strasse der Reichen - Haus Olymp**

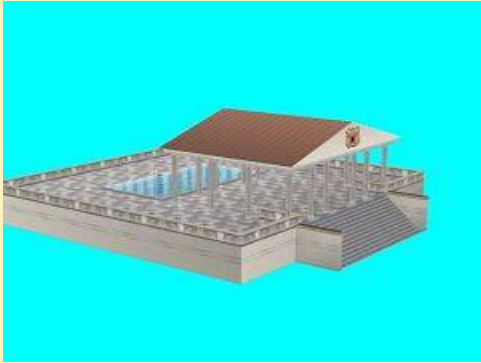
---



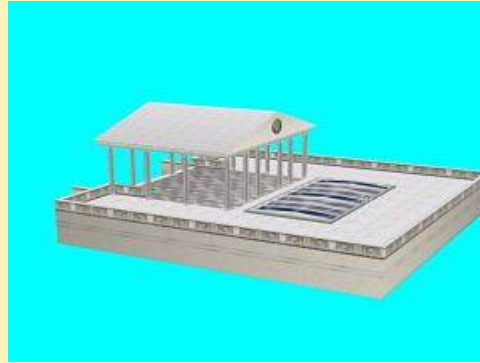
SdR\_Haus\_Olymp\_JE2



SdR\_Haus\_Olymp\_Wi\_JE2



SdR\_Pool\_Olymp\_JE2



SdR\_Pool\_Olymp\_Wi\_JE2

**Vora-Shop**

*JE200144.zip*

---

27.05.2017

**NS Wagen der Fahrzeuggruppe ICL, Set 2**

---



NS-ICL-50\_84\_10-91\_218-4\_HB4



NS-ICL-50\_84\_10-91\_703-5\_HB4



NS-ICL-50\_84\_22-91\_106-7\_HB4



NS-ICL-50\_84\_22-91\_289-1\_HB4



NS-ICL-50\_84\_22-91\_323-8\_HB4



NS-ICL-50\_84\_22-91\_716-3\_HB4

---



NS-ICL-50\_84\_84-90\_705-2\_HB4

Vora-Shop  
Trend-Shop

HB400088.zip  
V60NHB40088.zip

27.05.2017

**NS Wagen der Fahrzeuggruppe ICL, Set 1**



NS-ICL-50\_84\_10-91\_204-4\_HB4



NS-ICL-50\_84\_10-91\_700-1\_HB4



NS-ICL-50\_84\_22-91\_090-3\_HB4



NS-ICL-50\_84\_22-91\_256-0\_HB4



NS-ICL-50\_84\_22-91\_307-1\_HB4



NS-ICL-50\_84\_22-91\_702-3\_HB4



NS-ICL-50\_84\_84-90\_029-7\_HB4

Vora-Shop  
Trend-Shop

HB400087.zip  
V60NHB40087.zip

27.05.2017

**NS Wagen der Fahrzeuggruppe ICK, Set 2**



NS-ICK-50\_84\_12-37\_022-5\_HB4 NS-ICK-50\_84\_22-37\_909-1\_HB4 NS-ICK-50\_84\_22-37\_928-1\_HB4



NS-ICK-50\_84\_22-37\_946-3\_HB4 NS-ICK-50\_84\_22-37\_989-3\_HB4 NS-ICK-50\_84\_82-37\_062-6\_HB4

**Vora-Shop**  
**Trend-Shop**

*HB400086.zip*  
*V60NHB40086.zip*

27.05.2017

**NS Wagen der Fahrzeuggruppe ICK, Set 1**



NS-ICK-50\_84\_12-37\_006-8\_HB4 NS-ICK-50\_84\_12-37\_015-9\_HB4 NS-ICK-50\_84\_82-37\_059-2\_HB4



NS-ICK-50\_84\_22-37\_902-6\_HB4 NS-ICK-50\_84\_22-37\_916-6\_HB4 NS-ICK-50\_84\_22-37\_960-4\_HB4



NS-ICK-50\_84\_22-37\_985-1\_HB4 NS-ICK-50\_84\_22-37\_988-5\_HB4

Vora-Shop

Trend-Shop

HB400085.zip

V60NHB40085.zip

25.05.2017

**einfache G10-Güterwaggons Set 2 (Freemodelle)**

Das Set erschien zum "Herrentag" (Vatertag).



DB\_G10-001

DB\_G10-002

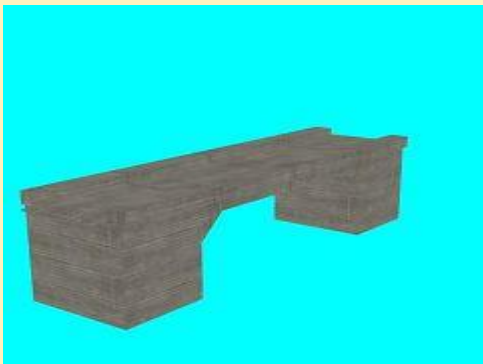
DR\_G10-004

Die Ger - freie Modelle

G10Set02.rar

23.05.2017

**einfache Betonbrücke (Userwunsch)**



Bruecke\_HG3

Vora-Shop

hg3fr001.zip

23.05.2017

**Strasse der Reichen - Haus von Nessen**

---



SdR\_Haus\_von\_Nessen\_JE2



SdR\_Haus\_von\_Nessen\_Wi\_JE2

**Vora-Shop**

*JE200143.zip*

23.05.2017

**LOCOMORE - privater Fernzug**

---



Locomore\_Bmz\_51\_81\_85-90\_001-7  
\_HB4



Locomore\_Bmz\_51\_81\_22-90\_002-1  
\_HB4



Locomore\_Bmz\_51\_81\_22-90\_003-9  
\_HB4



Heros\_Bimz\_56\_80\_22-91\_200-9  
\_HB4

---



Locomore\_Bmz\_61\_81\_22-90\_003-7\_HB4



Locomore\_Bmz\_61\_81\_22-90\_004-5\_HB4



Locomore\_Bmz\_61\_81\_22-90\_004-5-graffity\_HB4

**Vora-Shop**  
**Trend-Shop**

*HB400084.zip*  
*V60NHB40084.zip*

*16.05.2017*

**DBAG 103 220-0 Touristiklok**



DBAG\_103-220-0-Touristik-SK2\_HB4

**Vora-Shop**  
**Trend-Shop**

*HB400083.zip*  
*V60NHB40083.zip*

*11.05.2017*

**Offener Mannschaftstransporter**



ST\_380\_Kabrio\_gr\_Dach\_Pass\_FF1



ST\_380\_Kabrio\_gr\_Dach\_FF1



ST\_380\_Kabrio\_gruen\_im\_FF1



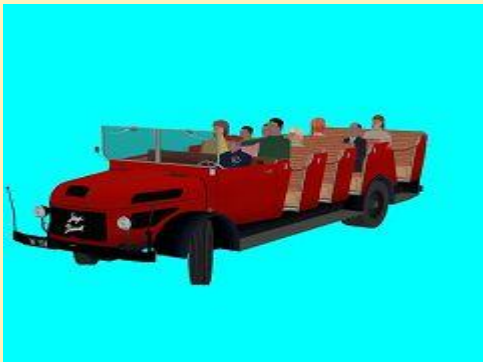


ST\_380\_Kabrio\_gr\_offen\_Pass\_FF1 ST\_380\_Kabrio\_gr\_offen\_FF1



ST\_380\_Kabrio\_ro\_Dach\_Pass\_FF1 ST\_380\_Kabrio\_ro\_Dach\_FF1

ST\_380\_Kabrio\_rot\_im\_FF1



ST\_380\_Kabrio\_ro\_offen\_Pass\_FF1 ST\_380\_Kabrio\_ro\_offen\_FF1

**Vora-Shop**  
**Trend-Shop**

*FF100093.zip*  
*V60NFF10093.zip*

11.05.2017

**Buessing 8000S Langholztransport grün**

---

*Rollmaterial:*



Buessing-8000S\_ZM-LgH\_gruen\_BH1



Buessing-8000S\_ZM-LgH\_leer\_gruen\_BH1

Buessing-8000S\_ZM-LgH\_FW\_gruen\_BH1

Buessing-8000S\_ZM-LgH\_FW\_leer\_gruen\_BH1



Langholz\_Auflieger-B8000\_BH1



Langholz\_Dolly-B8000\_leer\_BH1

Langholz\_Auflieger-B8000\_FW\_BH1

Langholz\_Dolly-B8000\_FW\_leer\_BH1

*Immobilien:*



Buessing-8000S\_ZM-LgH\_gruen\_IM\_BH1



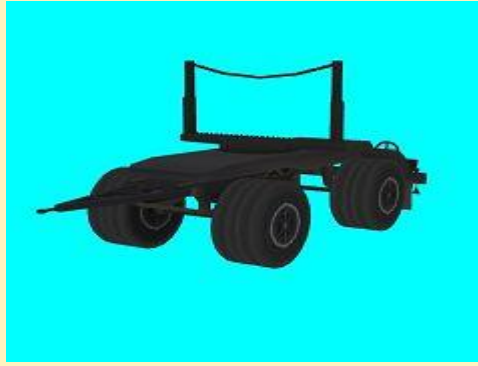
Buessing-8000S\_ZM-LgH\_leer\_gruen\_IM\_BH1







Langholz\_Auflieger-B8000\_IM\_BH1



Langholz\_Dolly-B8000\_leer\_IM\_BH1

**Vora-Shop**

*BH100289.zip*

10.05.2017

**Brückenstellwerk 1-gleisig (Userwunsch)**



Br-Stw\_1gleisig\_JE2



Br-Stw\_1gleisig\_Wi\_JE2

**Vora-Shop**

*JE200142.zip*

04.05.2017

**Feldgeräte**

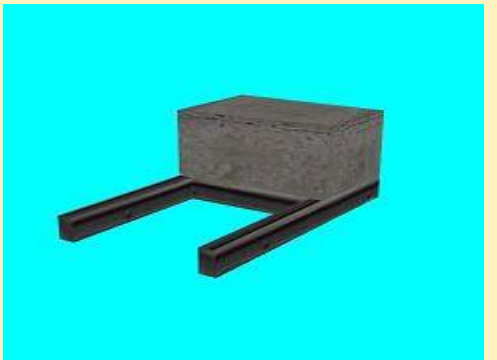
Rollmaterial: (für FW-Modelle)



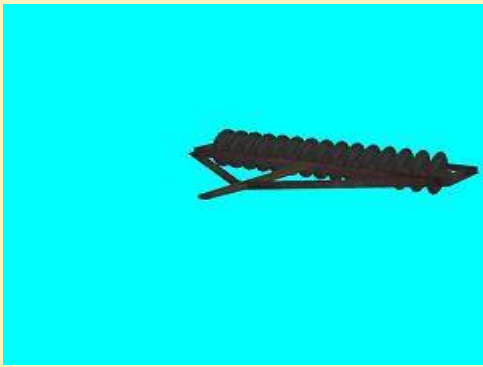
Feldwalze\_1\_MS4



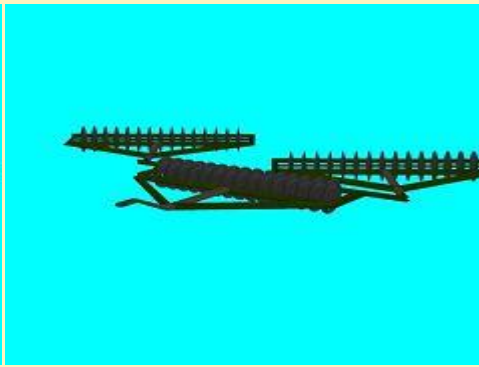
Feldwalze\_3\_MS4



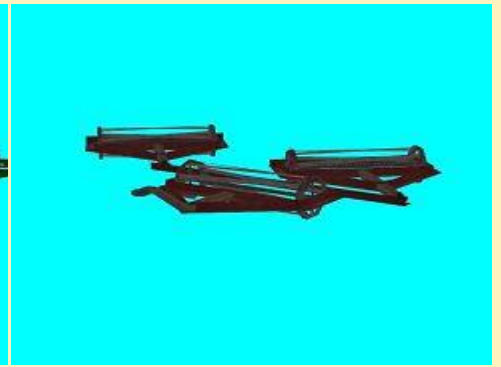
Gegengewicht\_MS4



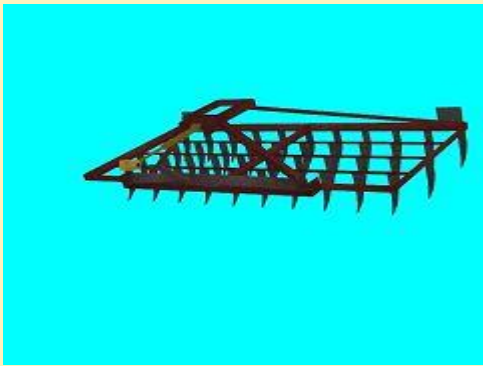
Scheibenegge\_1\_MS4



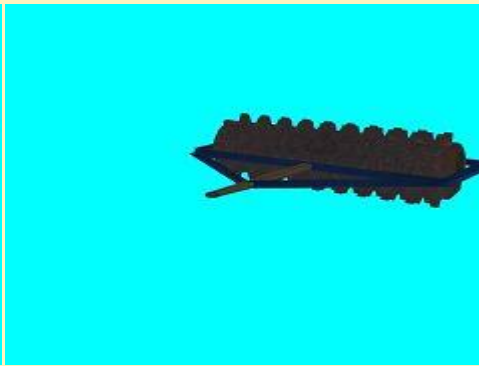
Scheibenegge\_3\_MS4



Spiralwalze\_MS4

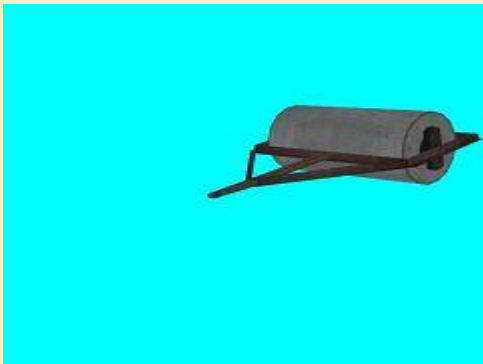


Grubber\_MS4

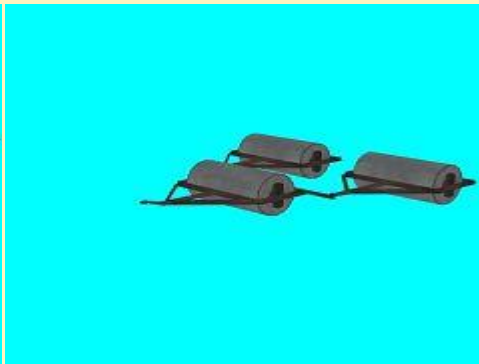


Mulchwalze\_MS4

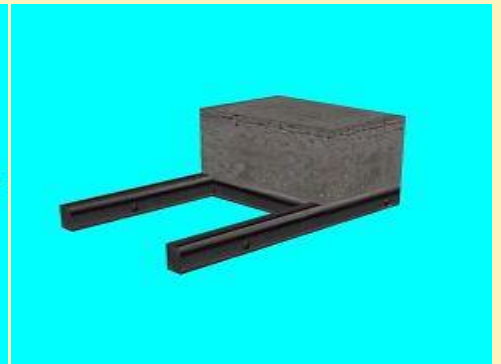
*Immobilien:*



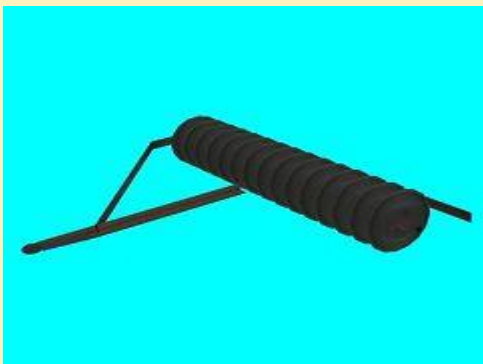
Feldwalze1\_IM\_MS4



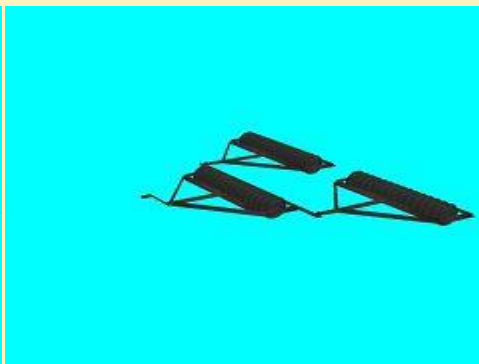
Feldwalze3\_IM\_MS4



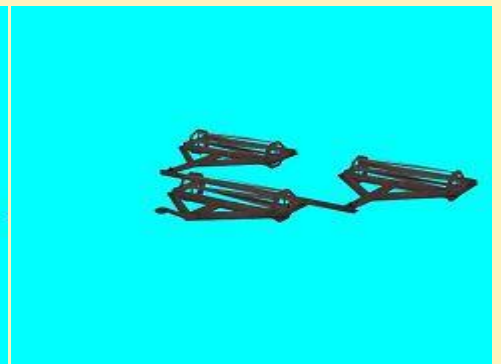
Gegengewicht\_IM\_MS4



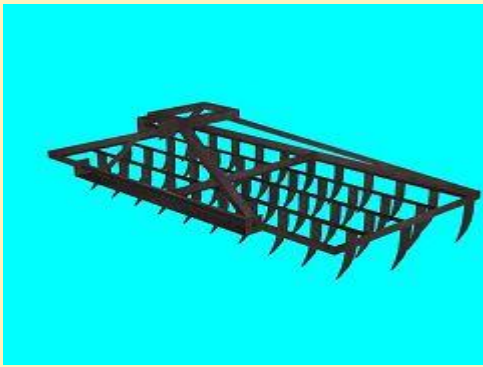
Scheibenegge1\_IM\_MS4



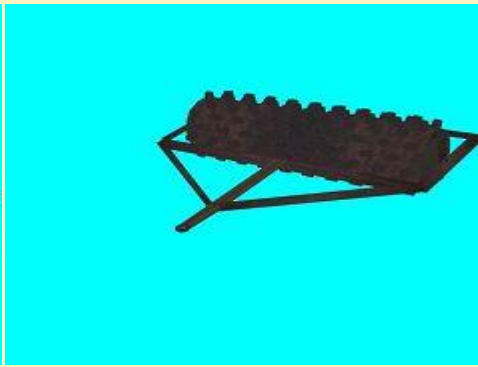
Scheibeneggen3\_IM\_MS4



Spiralwalzen\_IM\_MS4



Grubber\_IM\_MS4



Sternwalze\_IM\_MS4

**Vora-Shop**  
**Trend-Shop**

*ms400020.zip*  
*V60NMS40008.zip*

*04.05.2017*  
**Bergpension**



Bergpension\_JE2



Bergpension\_Wi\_JE2

**Vora-Shop**

*JE200141.zip*

*02.05.2017*  
**einfache G10-Güterwaggons (Freemodelle)**  
*Das Set ist ein "Geburtstagsgruß-Dankeschön" von Volkhard.*



DR\_G10-001



DR\_G10-002



DR\_G10-003

**Die 6er - freie Modelle**

*G10Set01.rar*

01.05.2017

**Wasserski-Set (Freemodelle)**

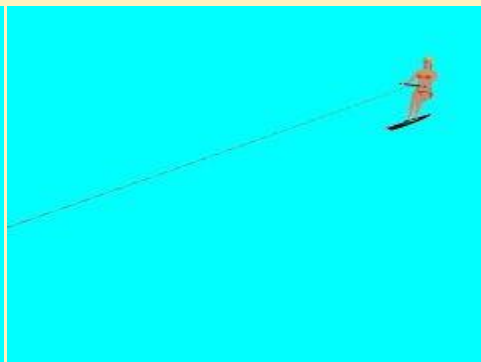
Dem Set liegt eine Demoanlage bei, die bei Interesse von Hand installiert werden muss.



Mobo\_Runabout\_750\_FF1



Mobo\_Runabout\_750\_II\_FF1



Wasserski\_Runabout\_FF1

**Vora-Shop**

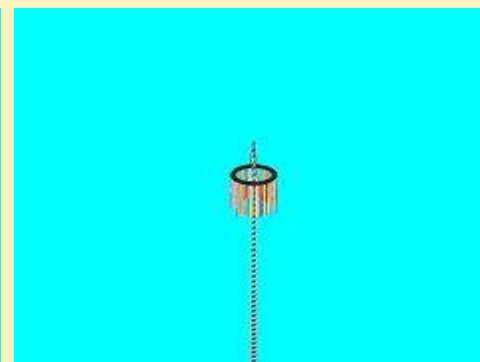
*ff1fr019.zip*

01.05.2017

**Maibaum rot-weiss (Freemodell)**



Maibaum\_rot-ws\_BH1 (Kopf)



Maibaum\_rot-ws\_BH1 (komplett)

**Vora-Shop**

*bh1fr008.zip*