

22.10.2017

**Renault R3 und R4**

*Rollmaterial:*



R3-grau\_MS4



R3-hblau\_MS4



R3-hgruen\_MS4



R4-I-bleu\_MS4



R4-I-gelb\_MS4



R4-I-gruen\_MS4



R4-I-hblau\_MS4



R4-I-rot\_MS4



R4-I-weiss\_MS4

*Immobilien:*



R3-grau-IM\_MS4



R3-hblau-IM\_MS4



R3-hgruen-IM\_MS4



R4-I-bleu\_IM\_MS4



R4-I-bordeaux\_IM\_MS4



R4-I-scirocco\_IM\_MS4



R4-I-hblau\_IM\_MS4



R4-I-rot\_IM\_MS4



R4-I-weiss\_IM\_MS4

**Vora-Shop**  
**Trend-Shop**

*ms400022.zip*  
*V60NMS40010.zip*

18.10.2017

**Sechssachsige Diesellok V300 / BR230 der DB Epoche III/IV**



DB\_230-001-EpIV\_DB1-JW3



DB\_V300-001-EpIII\_DB1-JW3

**Vora-Shop**  
**Trend-Shop**

*DB100308.zip*  
*V60NDB10308.zip*

14.10.2017

**Paddelboot-Trailer (Freemodell, Userwunsch)**



Trailer\_Paddelboot\_FF1



(Ansicht von achtern)

**Vora-Shop**

*FF1fr021.zip*

12.10.2017

**Bannerflaggen aus Deutschland und Österreich**

*National- und sonstige Flaggen:*



BF\_Austria\_JE2



BF\_BRD\_JE2



BF\_ehem\_DDR\_JE2



BF\_Europa\_JE2



BF\_DB\_JE2

*Länderflaggen Deutschland:*



BF\_Baden\_Wuertt\_JE2



BF\_Bayern\_JE2



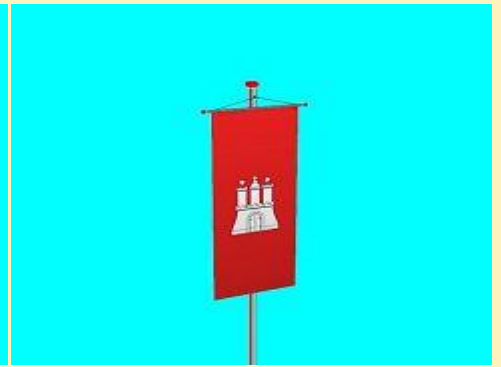
BF\_Berlin\_JE2



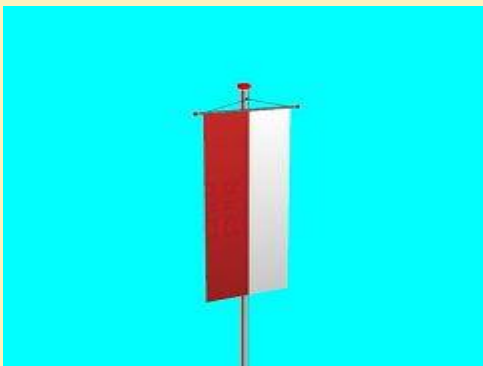
BF\_Brandenbg\_JE2



BF\_Bremen\_JE2



BF\_Hamburg\_JE2



BF\_Hessen\_JE2



BF\_MecklVorpom\_JE2



BF\_Niedersachsen\_JE2



BF\_NordrhWestf\_JE2



BF\_RheinlPfalz\_JE2



BF\_Saarland\_JE2



BF\_SachAnh\_JE2



BF\_Sachsen\_JE2



BF\_SchlesHolst\_JE2



BF\_Thueringen\_JE2

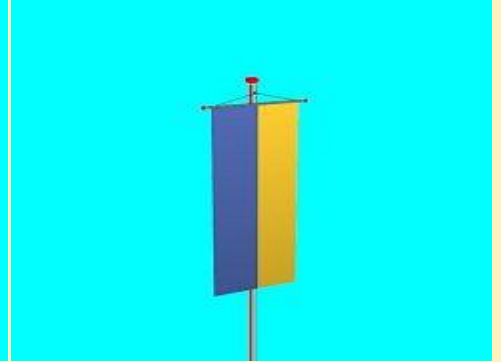
*Länderflaggen Österreich:*



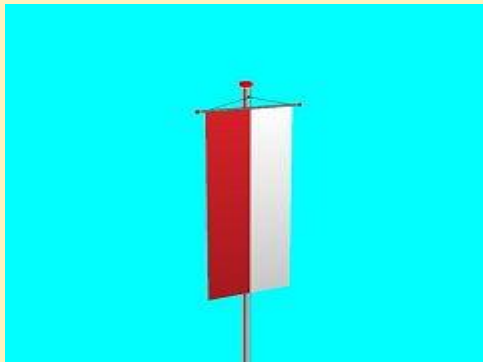
BF\_Burgenland\_JE2



BF\_Kaernten\_JE2



BF\_NiederOester\_JE2



BF\_OberOester\_JE2



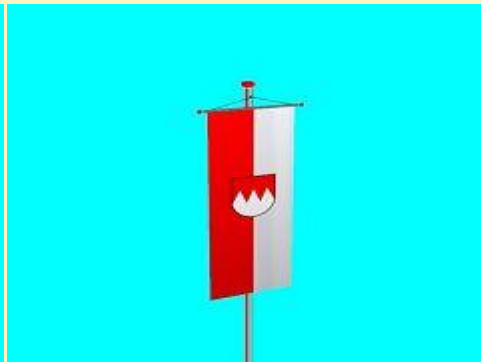
BF\_Salzburg\_JE2



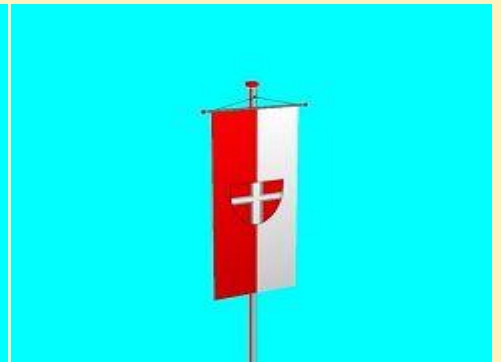
BF\_Steiermark\_JE2



BF\_Tirol\_JE2



BF\_Vorarlberg\_JE2



BF\_Wien\_JE2

**Vora-Shop**

*JE200172.zip*

*12.10.2017*

**Kommissariat K7**



Kripo\_K7\_JE2



Kripo\_K7\_Wi\_JE2

**Vora-Shop**

*JE200171.zip*



05.10.2017

**Hochhausset**

---



Hochhaus1\_rot\_JE2



Hochhaus1\_rot\_Wi\_JE2

---



Hochhaus2\_blau\_JE2



Hochhaus2\_blau\_Wi\_JE2

---



Hochhaus3\_gelb\_JE2



Hochhaus3\_gelb\_Wi\_JE2

---



Hochhaus4\_gruen\_JE2

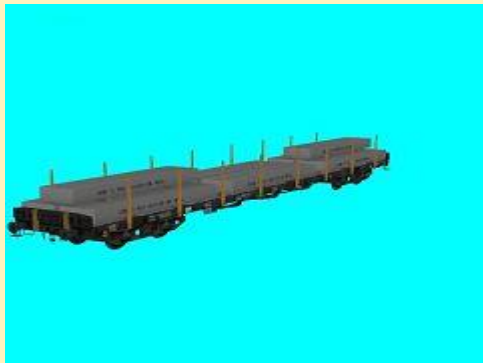


Hochhaus4\_gruen\_Wi\_JE2

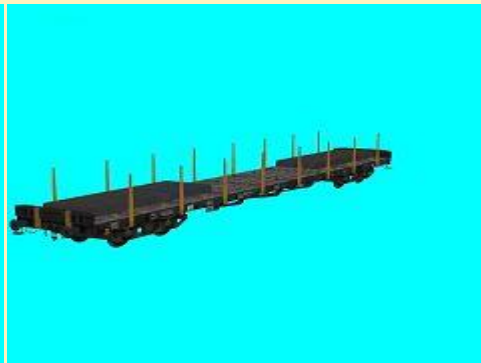
---

05.10.2017

**Vierachsige Flachwagen vom Typ Rs 680 (Variante DB-Gleisbau)**



DBG\_Rs-680\_Lad01\_DB1



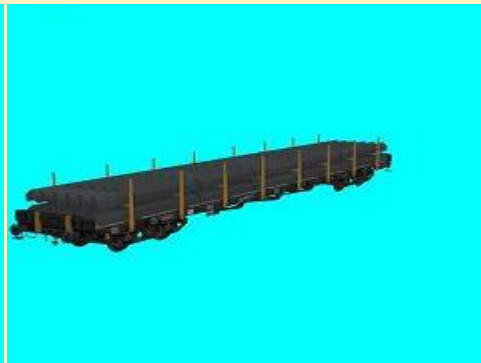
DBG\_Rs-680\_Lad02\_DB1



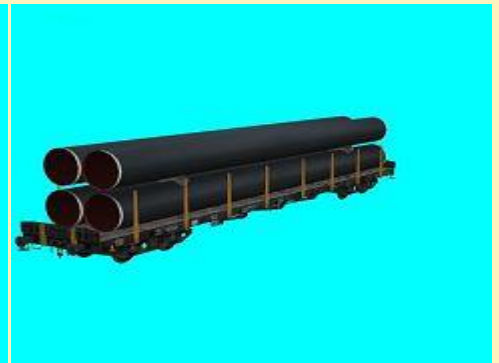
DBG\_Rs-680\_Lad03\_DB1



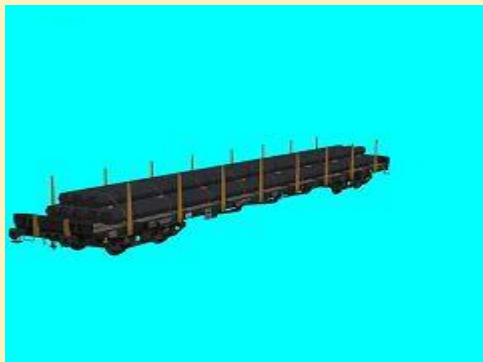
DBG\_Rs-680\_Lad04\_DB1



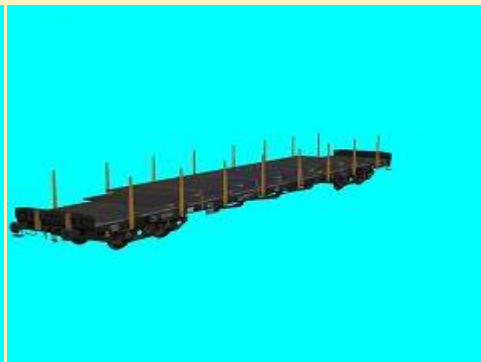
DBG\_Rs-680\_Lad05\_DB1



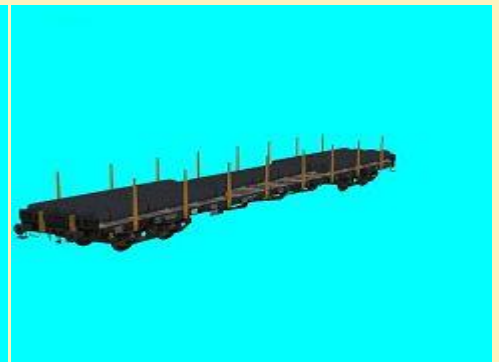
DBG\_Rs-680\_Lad06\_DB1



DBG\_Rs-680\_Lad07\_DB1



DBG\_Rs-680\_Lad08\_DB1



DBG\_Rs-680\_Lad09\_DB1



DBG\_Rs-680\_Lad10\_DB1



DBG\_Rs-680\_Lad11\_DB1



DBG\_Rs-680\_Lad12\_DB1



DBG\_Rs-680\_Lad13\_DB1



DBG\_Rs-680\_Lad14\_DB1



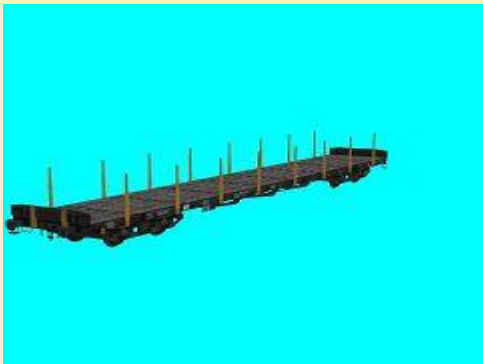
DBG\_Rs-680\_Lad15\_DB1



DBG\_Rs-680\_Lad16\_DB1



DBG\_Rs-680\_Lad17\_DB1



DBG\_Rs-680\_leer1\_DB1



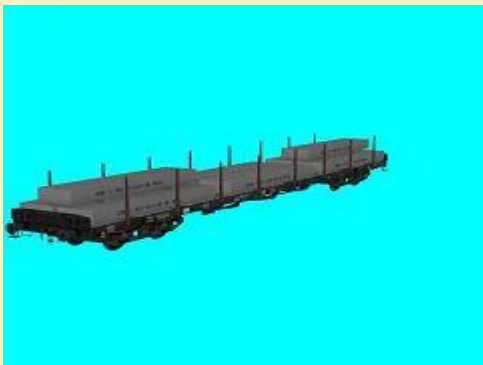
DBG\_Rs-680\_leer2\_DB1

**Vora-Shop**  
**Trend-Shop**

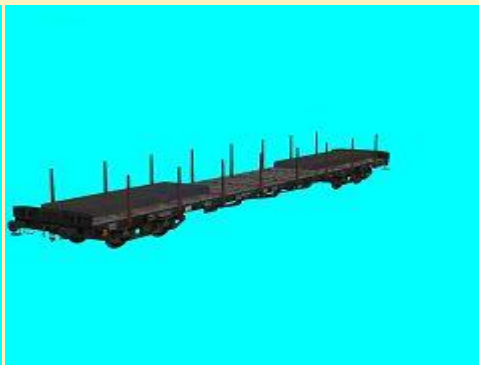
*DB100307.zip*  
*V60NDB10307.zip*

*05.10.2017*

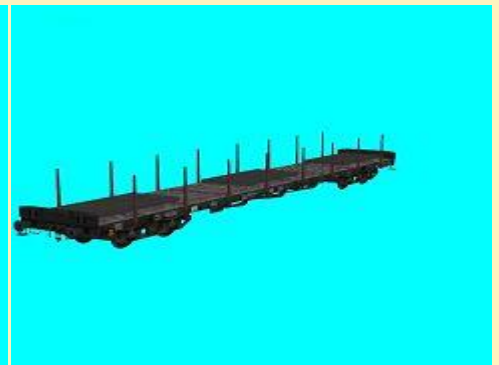
**Vierachsige Flachwagen vom Typ Rs 680 (Variante DBAG)**



DBAG\_Rs-680\_Lad01\_DB1



DBAG\_Rs-680\_Lad02\_DB1

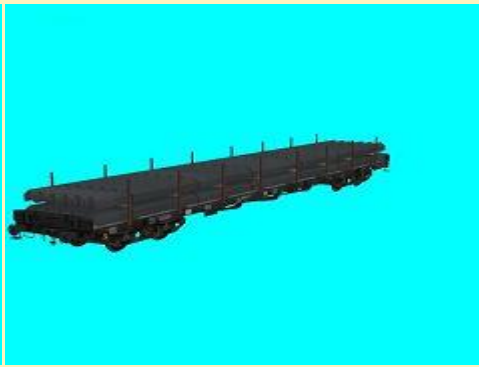


DBAG\_Rs-680\_Lad03\_DB1





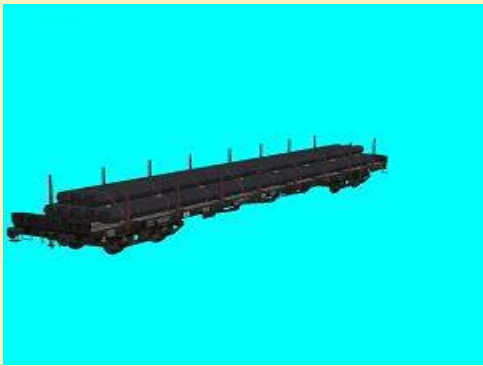
DBAG\_Rs-680\_Lad04\_DB1



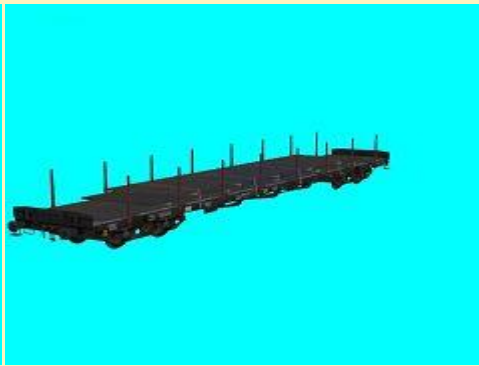
DBAG\_Rs-680\_Lad05\_DB1



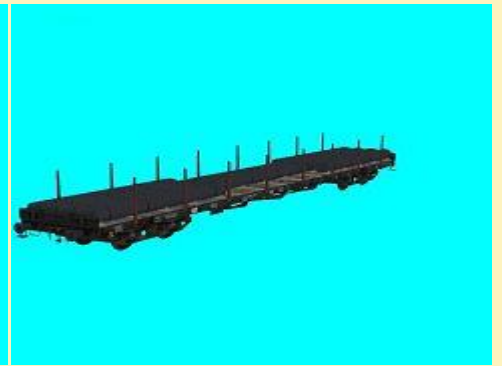
DBAG\_Rs-680\_Lad06\_DB1



DBAG\_Rs-680\_Lad07\_DB1



DBAG\_Rs-680\_Lad08\_DB1



DBAG\_Rs-680\_Lad09\_DB1



DBAG\_Rs-680\_Lad10\_DB1



DBAG\_Rs-680\_Lad11\_DB1



DBAG\_Rs-680\_Lad12\_DB1



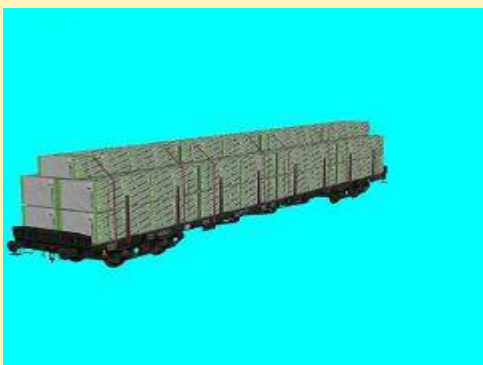
DBAG\_Rs-680\_Lad13\_DB1



DBAG\_Rs-680\_Lad14\_DB1



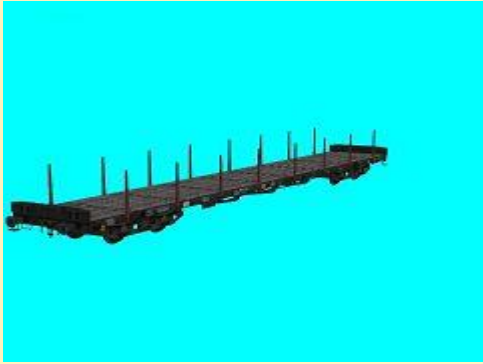
DBAG\_Rs-680\_Lad15\_DB1



DBAG\_Rs-680\_Lad16\_DB1



DBAG\_Rs-680\_Lad17\_DB1



DBAG\_Rs-680\_leer1\_DB1



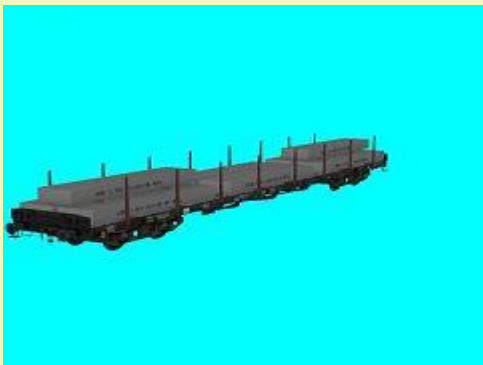
DBAG\_Rs-680\_leer2\_DB1

Vora-Shop  
Trend-Shop

DB100306.zip  
V60NDB10306.zip

05.10.2017

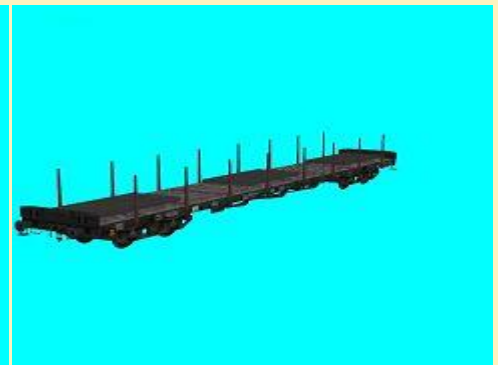
**Vierachsige Flachwagen vom Typ Rs 680 (Variante DB)**



DB\_Rs-680\_Lad01\_DB1



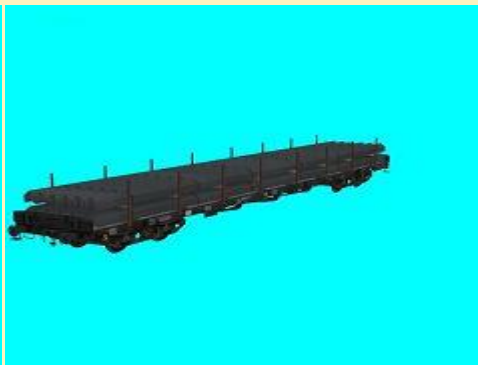
DB\_Rs-680\_Lad02\_DB1



DB\_Rs-680\_Lad03\_DB1



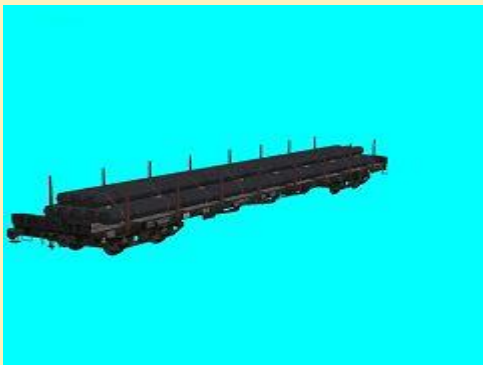
DB\_Rs-680\_Lad04\_DB1



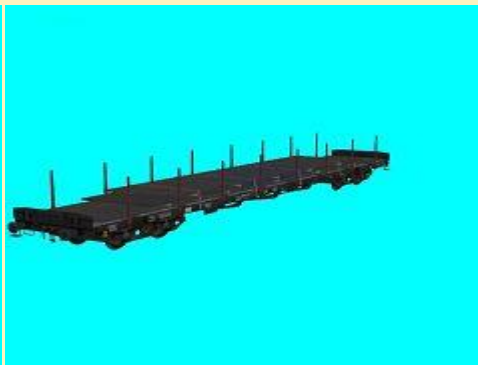
DB\_Rs-680\_Lad05\_DB1



DB\_Rs-680\_Lad06\_DB1



DB\_Rs-680\_Lad07\_DB1



DB\_Rs-680\_Lad08\_DB1



DB\_Rs-680\_Lad09\_DB1



DB\_Rs-680\_Lad10\_DB1



DB\_Rs-680\_Lad11\_DB1



DB\_Rs-680\_Lad12\_DB1



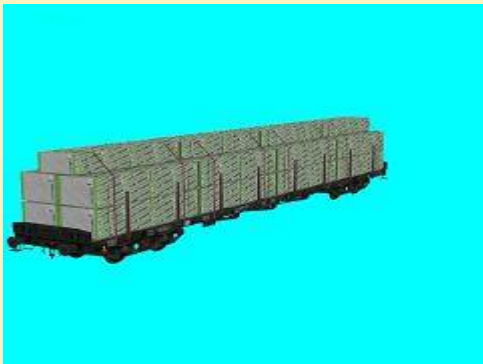
DB\_Rs-680\_Lad13\_DB1



DB\_Rs-680\_Lad14\_DB1



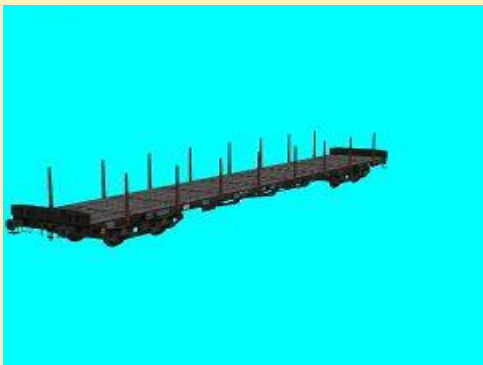
DB\_Rs-680\_Lad15\_DB1



DB\_Rs-680\_Lad16\_DB1



DB\_Rs-680\_Lad17\_DB1



DB\_Rs-680\_leer1\_DB1



DB\_Rs-680\_leer2\_DB1

**Vora-Shop**  
**Trend-Shop**

*DB100305.zip*  
*V60NDB10305.zip*

02.10.2017

**Freemodell passend zu den Motorfahrrädern**

*Für die speziellen Eigenschaften die beiliegende PDF beachten!*

---



Motorfahrrad\_F

---

**Vora-Shop**

FF1fr020.zip

02.10.2017

**französische Motorfahrräder der Marke Solex**

---

*Rollmaterial:*



Motorfahrrad\_A



Motorfahrrad\_B



Motorfahrrad\_C

---



Motorfahrrad\_D



Motorfahrrad\_E



Motorfahrrad\_Lastendreirad

---

*Immobilien:*



Motorfahrrad\_im



Motorfahrrad\_Lastendreirad\_im

**Vora-Shop**  
**Trend-Shop**

*FF100097.zip*  
*V60NFF10097.zip*