

25.11.2017

Marineoffiziere und Matrosen für die Epochen II-III

Rollmaterial:

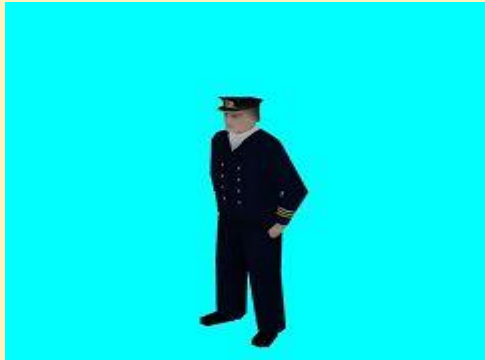


MarineOffz-EpII-III-1_BH1
MarineOffz-EpII-III-1_Str_BH1



Matrose-EpII-III-1_BH1
Matrose-EpII-III-1_Str_BH1

Immobilien:



MarineOffz_Ep-II-III_01_BH1



MarineOffz_Ep-II-III_02_BH1



Matrose_Ep-II-III_01_BH1



Matrose_Ep-II-III_02_BH1



Matrose_Ep-II-III_03_BH1



Matrose_Ep-II-III_04_BH1

18.11.2017

Baumbänke-Set (Freemodelle)



Baumbank-Holz



Baumbank-braun



Baumbank-gelb



Baumbank-gruen

Vora-Shop

vr1f020.zip

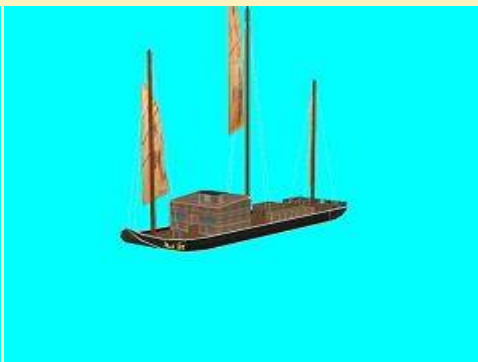
18.11.2017

Drei-Dschunken-Set

Rollmaterial:



Dschunke_Dao_Lin_Hay_JE2



Dschunke_Mau_Yee_JE2

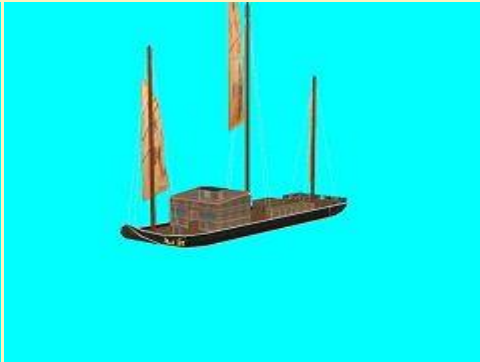


Dschunke_Suzie_Wong_JE2

Immobilien:



Dschunke_Dao_Lin_Hay_IMO_JE2



Dschunke_Mau_Yee_IMO_JE2



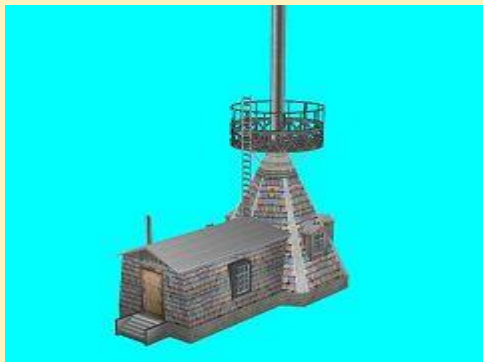
Dschunke_Suzie_Wong_IMO_JE2

Vora-Shop

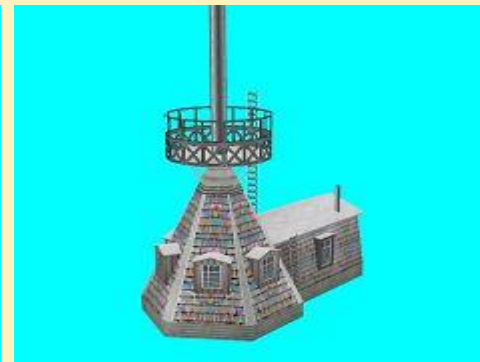
JE200180.zip

18.11.2017

Wetterwarte



Wetterwarte_JE2



Wetterwarte_Wi_JE2

Vora-Shop

JE200179.zip

14.11.2017

LINT41 Dieseltriebwagen Oberpfalzbahn



DLB_648_209_MK1



DLB_648_709_MK1

Vora-Shop

MK100220.zip

Trend-Shop

V60NMK10220.zip

14.11.2017

Blautalhalle



Blautalhalle_JE2



Blautalhalle_Wi_JE2

Vora-Shop

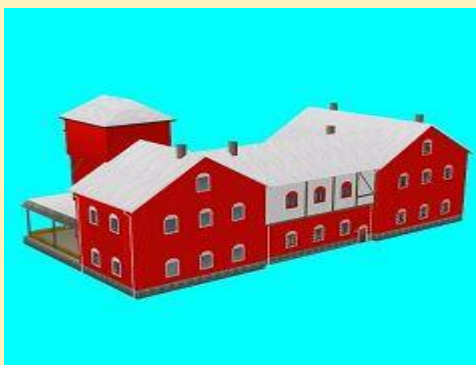
JE200178.zip

11.11.2017

Alte Färberei



Alte_Faerberei_JE2



Alte_Faerberei_Wi_JE2

Vora-Shop

JE200177.zip

11.11.2017

Zweiteilige Taschentrugwagen Typ Sdggmrss ExpressRail



ExRa_Sdggmrss-A-Lad01_DB1



ExRa_Sdggmrss-B-Lad01_DB1



ExRa_Sdggmrss-A-Lad02_DB1



ExRa_Sdggmrss-B-Lad02_DB1



ExRa_Sdggmrss-A-Lad03_DB1



ExRa_Sdggmrss-B-Lad03_DB1



ExRa_Sdggmrss-A-Lad04_DB1



ExRa_Sdggmrss-B-Lad04_DB1



ExRa_Sdggmrss-A-Lad05_DB1



ExRa_Sdggmrss-B-Lad05_DB1



ExRa_Sdggmrss-A-Lad06_DB1



ExRa_Sdggmrss-B-Lad06_DB1



ExRa_Sdggmrss-A-Lad07_DB1



ExRa_Sdggmrss-B-Lad07_DB1



ExRa_Sdggmrss-A-Lad08_DB1



ExRa_Sdggmrss-B-Lad08_DB1



ExRa_Sdggmrss-A-Lad09_DB1



ExRa_Sdggmrss-B-Lad09_DB1



ExRa_Sdggmrss-A-Lad10_DB1



ExRa_Sdggmrss-B-Lad10_DB1



ExRa_Sdggmrss-A-leer_DB1



ExRa_Sdggmrss-B-leer_DB1

Vora-Shop

Trend-Shop

DB100310.zip

V60NDB10310.zip

11.11.2017

Zweiteilige Taschentragewagen Typ Sdggmrss DBAG



DBAG_Sdggmrss-A-Lad01_DB1



DBAG_Sdggmrss-B-Lad01_DB1



DBAG_Sdggmrss-A-Lad02_DB1



DBAG_Sdggmrss-B-Lad02_DB1



DBAG_Sdggmrss-A-Lad03_DB1



DBAG_Sdggmrss-B-Lad03_DB1



DBAG_Sdggmrss-A-Lad04_DB1



DBAG_Sdggmrss-B-Lad04_DB1



DBAG_Sdggmrss-A-Lad05_DB1



DBAG_Sdggmrss-B-Lad05_DB1



DBAG_Sdggmrss-A-Lad06_DB1



DBAG_Sdggmrss-B-Lad06_DB1



DBAG_Sdggmrss-A-Lad07_DB1



DBAG_Sdggmrss-B-Lad07_DB1



DBAG_Sdggmrss-A-Lad08_DB1



DBAG_Sdggmrss-B-Lad08_DB1



DBAG_Sdggmrss-A-Lad09_DB1



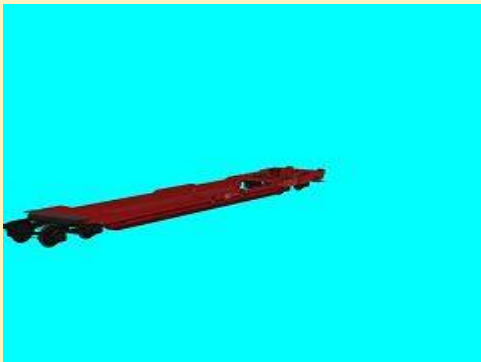
DBAG_Sdggmrss-B-Lad09_DB1



DBAG_Sdggmrss-A-Lad10_DB1



DBAG_Sdggmrss-B-Lad10_DB1



DBAG_Sdggmrss-A-leer_DB1



DBAG_Sdggmrss-B-leer_DB1

Vora-Shop
Trend-Shop

DB100309.zip
V60NDB10309.zip

11.11.2017

Anlage "Weit durchs Land"

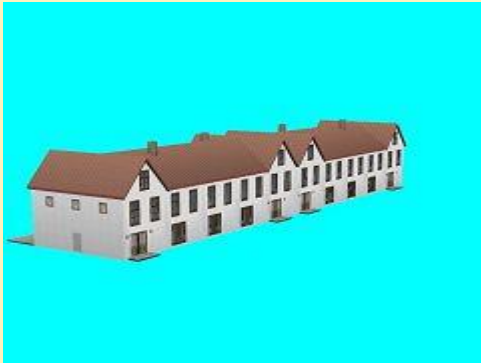
Die Anlage "Weit durchs Land" von Andreas Grote wurde nur mit Modellen der Grundversion ausgestaltet. Deshalb gibt es keine Bilder, die nicht anderswo schon existieren würden...

Vora-Shop

AGR00001.zip

09.11.2017

Reihenhaus 44



Reihenhaus_44_JE2



Reihenhaus_44_Wi_JE2

Vora-Shop

JE200176.zip

09.11.2017

Reihenhaus 43



Reihenhaus_43_JE2



Reihenhaus_43_Wi_JE2

Vora-Shop

JE200175.zip

09.11.2017

Ingelfinger Fass



Ingelfinger_Fass_JE2



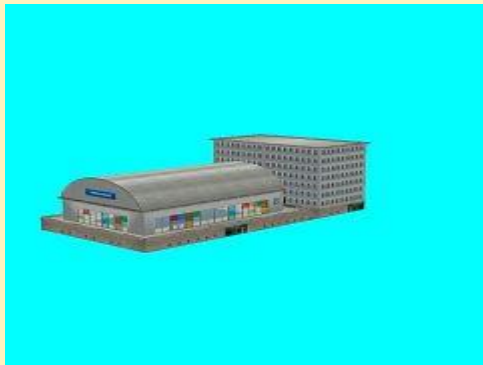
Ingelfinger_Fass_Wi_JE2

Vora-Shop

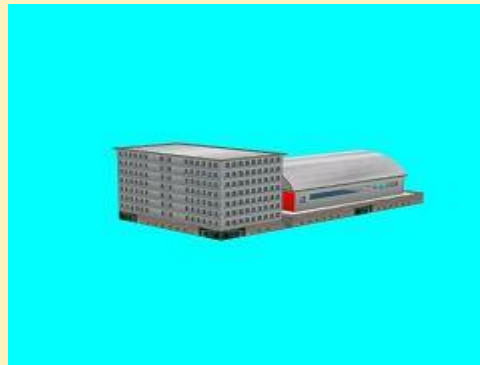
JE200174.zip

09.11.2017

Hallenbad West



Hallenbad_West_JE2



Hallenbad_West_Wi_JE2

Vora-Shop

JE200173.zip

02.11.2017

Diesellokomotive ÖBB 2045



OBB_2045-02



OBB_2045-12



OBB_2045-13

Vora-Shop

FF100098.zip

Trend-Shop

V60NFF10098.zip