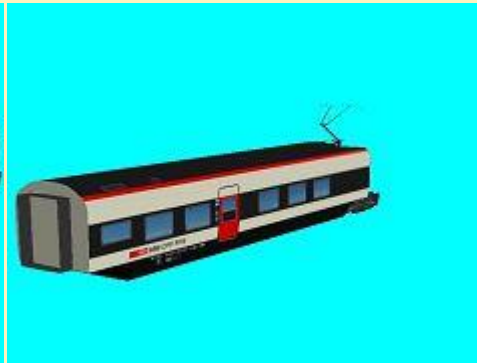


25.02.2019

**Giruno-Triebzug der SBB**



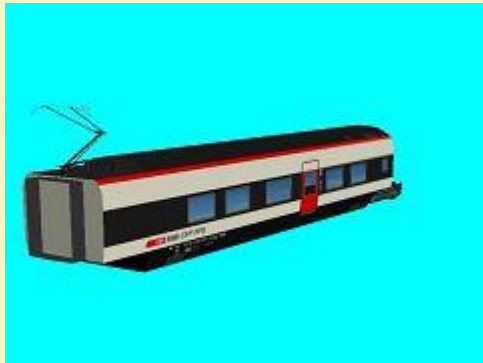
RABe501\_100\_1\_MK1



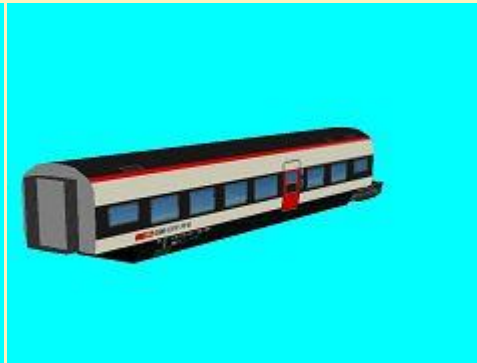
RABe501\_100\_2\_MK1



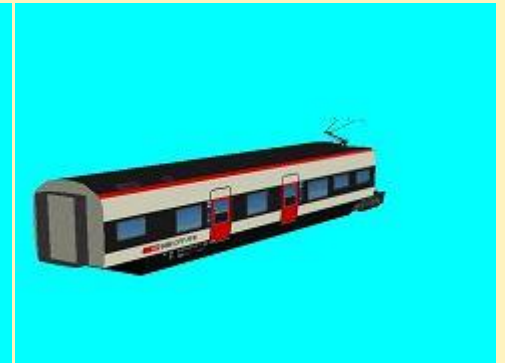
RABe501\_100\_3\_MK1



RABe501\_100\_4\_MK1



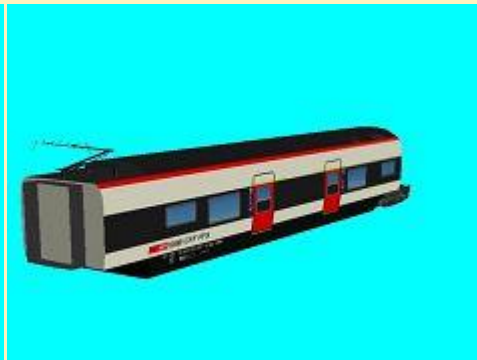
RABe501\_100\_5\_MK1



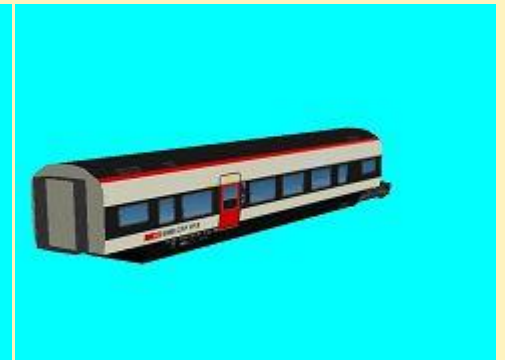
RABe501\_100\_6\_MK1



RABe501\_100\_7\_MK1



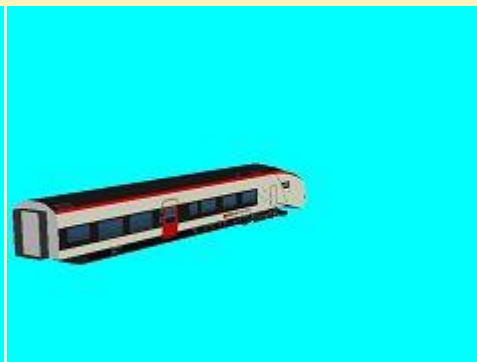
RABe501\_100\_8\_MK1



RABe501\_100\_9\_MK1



RABe501\_100\_10\_MK1



RABe501\_100\_11\_MK1

**Vora-Shop**  
**Trend-Shop**

*MK100224.zip*  
*V60NMK10228.zip*

25.02.2019

**Krupp MUSTANG Pritschengespanne weinrot-weiss**

---

Rollmaterial:



Krupp-MUSTANG\_PritPlan-offen  
\_wrot-ws\_BH1



Krupp-MUSTANG\_PritPlan-zu  
\_wrot-ws\_BH1



Anh\_2Achs\_PritPlan-offen  
\_wrot-ws\_BH1



Anh\_2Achs\_PritPlan-zu  
\_wrot-ws\_BH1

Immobilien:



Krupp-MUSTANG\_PritPlan-offen  
\_wrot-ws\_IM\_BH1



Krupp-MUSTANG\_PritPlan-zu  
\_wrot-ws\_IM\_BH1



Anh\_2Achs\_PritPlan-offen\_wrot-ws  
\_IM\_BH1



Anh\_2Achs\_PritPlan-zu\_wrot-ws  
\_IM\_BH1

23.02.2019

Altstadtimpressionen (Set 57, Stadthaus Bausatz 4)



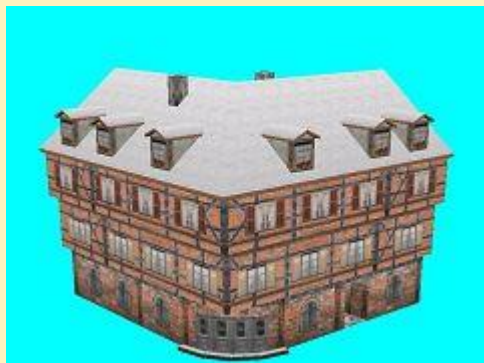
AI\_Stadthaus106\_Eck2\_JE2



AI\_Stadthaus106\_H\_JE2



AI\_Stadthaus106\_I\_JE2



AI\_Stadthaus106\_Eck2\_Wi\_JE2



AI\_Stadthaus106\_H\_Wi\_JE2



AI\_Stadthaus106\_I\_Wi\_JE2



AI\_Stadthaus106\_K\_JE2



AI\_Stadthaus106\_K\_Wi\_JE2

23.02.2019

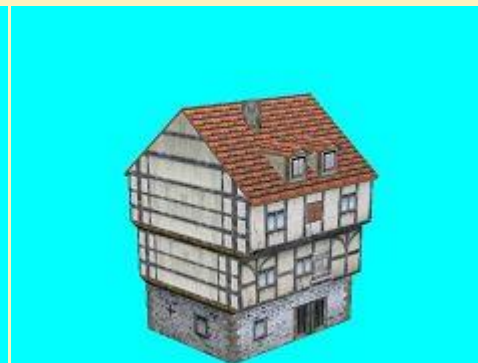
**Altstadtimpressionen (Set 56, Stadthaus Bausatz 3)**



AI\_Stadthaus106\_Eck1\_JE2



AI\_Stadthaus106\_G\_JE2



AI\_Stadthaus106\_L\_JE2



AI\_Stadthaus106\_Eck1\_Wi\_JE2



AI\_Stadthaus106\_G\_Wi\_JE2



AI\_Stadthaus106\_L\_Wi\_JE2

**Vora-Shop**

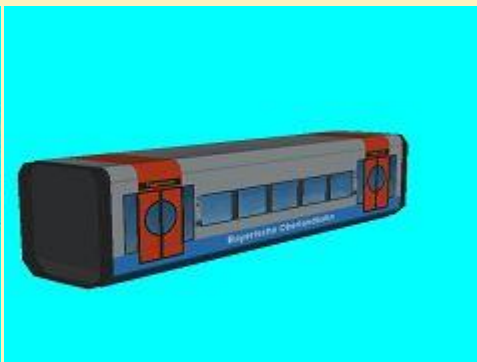
*JE200347.zip*

17.02.2019

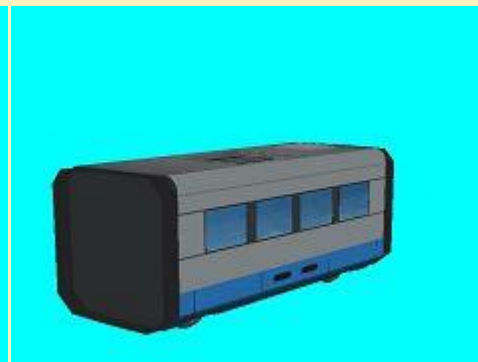
**BOB Dieseltriebzug Integral**



BOB\_Integral\_1\_MK1



BOB\_Integral\_2\_MK1



BOB\_Integral\_3\_MK1



BOB\_Integral\_4\_MK1



BOB\_Integral\_5\_MK1

**Vora-Shop**

**Trend-Shop**

*MK100223.zip*

*V60NMK10227.zip*

17.02.2019

**Altstadtimpressionen (Set 55, Stadthaus Bausatz 2)**



AI\_Stadthaus106\_D\_JE2



AI\_Stadthaus106\_E\_JE2



AI\_Stadthaus106\_F\_JE2



AI\_Stadthaus106\_D\_Wi\_JE2



AI\_Stadthaus106\_E\_Wi\_JE2



AI\_Stadthaus106\_F\_Wi\_JE2

**Vora-Shop**

*JE200346.zip*

17.02.2019

**Altstadtimpressionen (Set 54, Stadthaus Bausatz 1)**



AI\_Stadthaus106\_A\_JE2



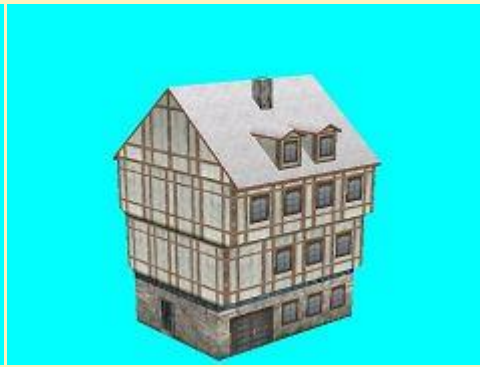
AI\_Stadthaus106\_B\_JE2



AI\_Stadthaus106\_C\_JE2



AI\_Stadthaus106\_A\_Wi\_JE2



AI\_Stadthaus106\_B\_Wi\_JE2



AI\_Stadthaus106\_C\_Wi\_JE2

**Vora-Shop**

*JE200345.zip*

*17.02.2019*

**Krupp MUSTANG Pritschengespanne blau-weiss**

*Rollmaterial:*



Krupp-MUSTANG\_PritPlan-offen  
\_blau-ws\_BH1



Krupp-MUSTANG\_PritPlan-zu  
\_blau-ws\_BH1



Anh\_2Achs\_PritPlan-offen  
\_blau-ws\_BH1



Anh\_2Achs\_PritPlan-zu  
\_blau-ws\_BH1

*Immobilien:*



Krupp-MUSTANG\_PritPlan-offen  
\_blau-ws\_IM\_BH1



Krupp-MUSTANG\_PritPlan-zu  
\_blau-ws\_IM\_BH1



Anh\_2Achs\_PritPlan-offen\_blau-ws  
\_IM\_BH1



Anh\_2Achs\_PritPlan-zu\_blau-ws  
\_IM\_BH1

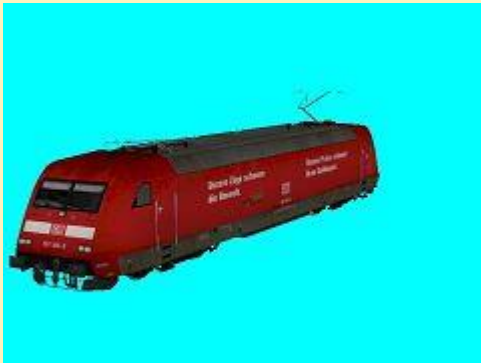
**Vora-Shop**

*BH100300.zip*

*14.02.2019*

**DB 101 105 (Freemodell zum Valentinstag)**

*In Zusammenarbeit mit René E.:*



DBAG\_101\_114\_K\_EpVI

**Vora-Shop**

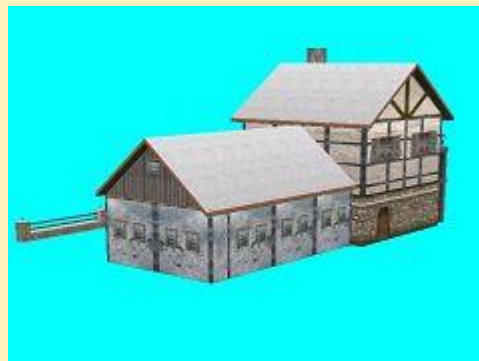
*vr1fr036.zip*

*14.02.2019*

**Altstadtimpressionen (Set 53)**



AI\_Pferdestall\_JE2



AI\_Pferdestall\_Wi\_JE2

**Vora-Shop**

*JE200344.zip*

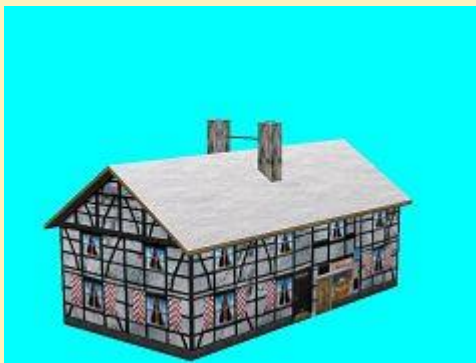
14.02.2019

**Altstadtimpressionen (Set 52)**

---



AI\_Haus\_111\_JE2



AI\_Haus\_111\_Wi\_JE2

**Vora-Shop**

*JE200343.zip*

11.02.2019

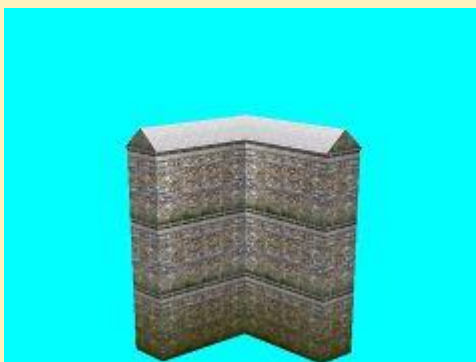
**Altstadtimpressionen Stadtmauerecke ohne Turm (Userwunsch, Freemodell)**

*Für die korrekte Darstellung ist das Set JE200331 (Altstadtimpressionen Set 42) erforderlich!*

---



AI\_Stadtmauer\_Eck\_ohneTurm\_JE2



AI\_Stadtmauer\_Eck\_ohneTurm\_Wi\_JE2

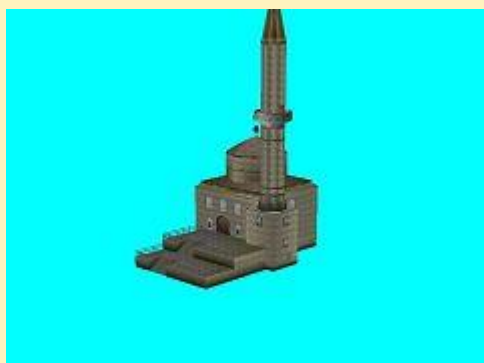
**Vora-Shop**

*JE2fr112.zip*

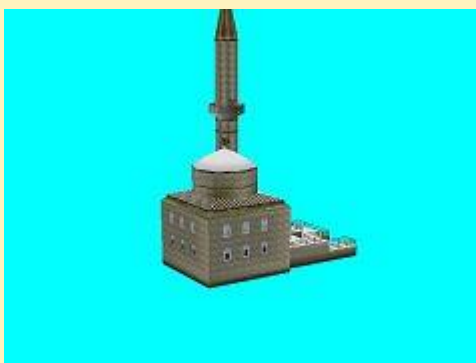
11.02.2019

**Altstadtimpressionen (Set 51)**

---



AI\_Moschee102\_JE2



AI\_Moschee102\_Wi\_JE2

**Vora-Shop**

*JE200342.zip*



11.02.2019

**Hotel am Westring**

---



Hotel\_am\_Westring\_JE2



Hotel\_am\_Westring\_Wi\_JE2

**Vora-Shop**

*JE200341.zip*

---

07.02.2019

**Verwaltungsgebäude**

---



Verwaltungsgebäude\_JE2



Verwaltungsgebäude\_Wi\_JE2

**Vora-Shop**

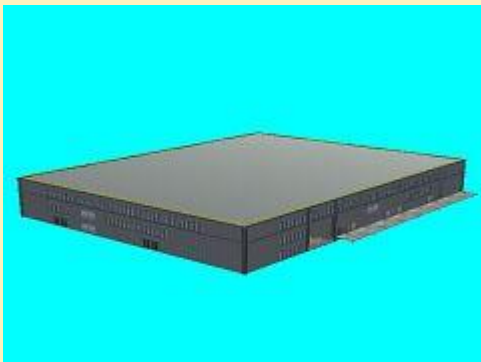
*JE200340.zip*

---

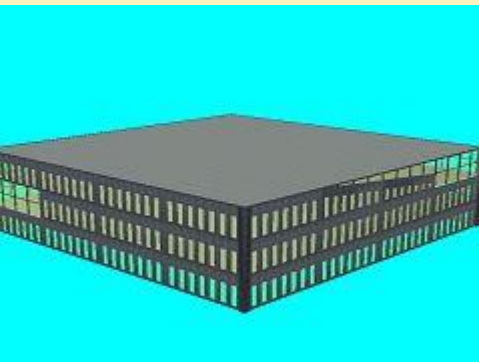
07.02.2019

**Bausatz für eine Vertikal-Farm**

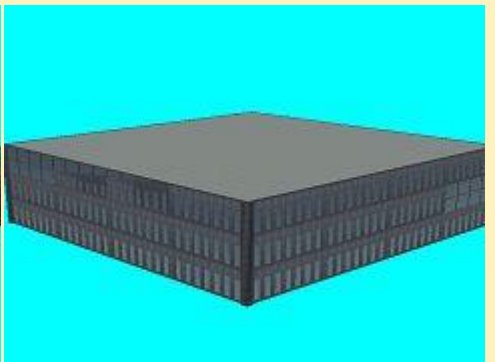
---



Vert\_Farm\_Basis\_JE2

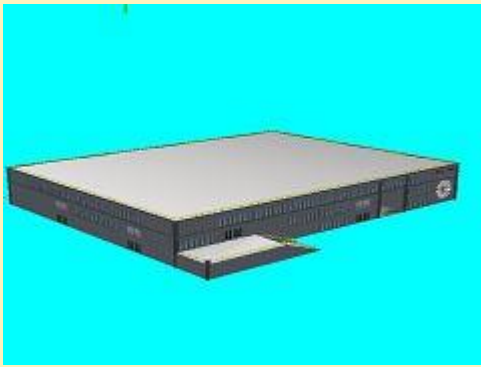


Vert\_Farm\_Tumelement\_JE2

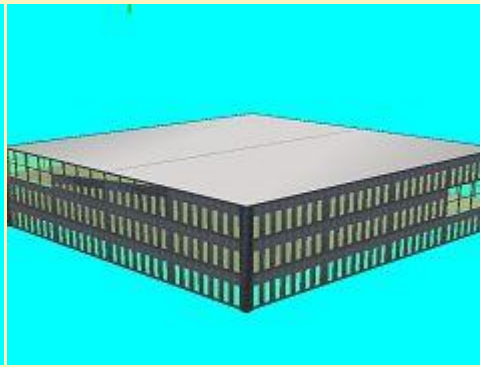


Vert\_Farm\_Tumelement\_Simpel\_JE2

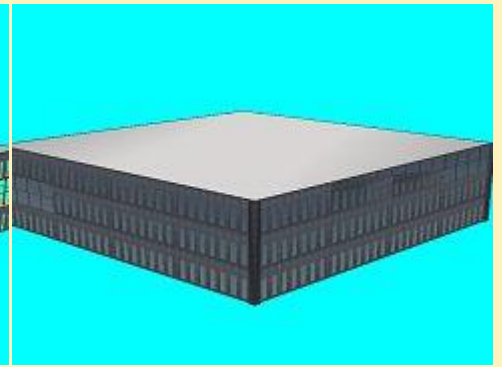
---



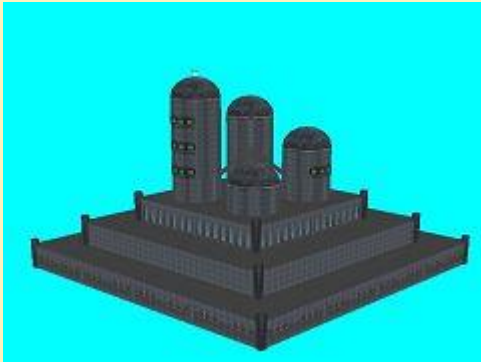
Vert\_Farm\_Basis\_Wi\_JE2



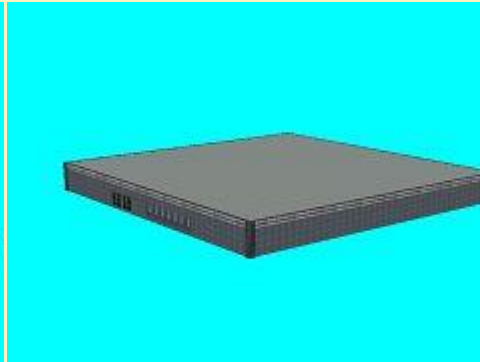
Vert\_Farm\_Tumelement\_Wi\_JE2



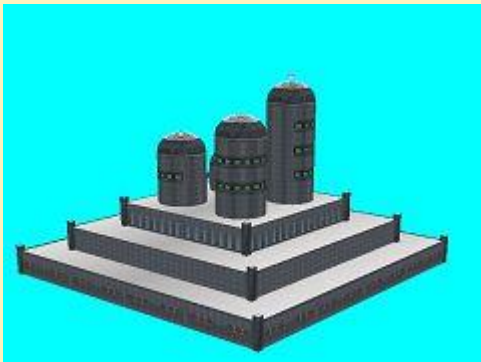
Vert\_Farm\_Tumelement\_Simpel\_Wi\_JE2



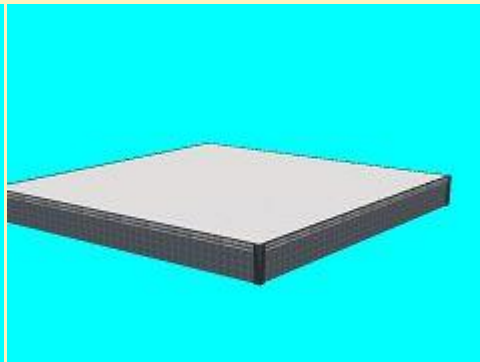
Vert\_Farm\_Turmabschluss\_JE2



Vert\_Farm\_Turmsockel\_JE2



Vert\_Farm\_Turmabschluss\_Wi\_JE2



Vert\_Farm\_Turmsockel\_Wi\_JE2

**Vora-Shop**

*JE200339.zip*

03.02.2019

**DB 101 114 "D'r Zoch kütt" (Freemodell)**

*In Zusammenarbeit mit René E.:*



DBAG\_101\_114\_K\_EpVI

**Vora-Shop**

*vr1fr036.zip*

03.02.2019

**Altstadtimpressionen (Set 50, Freemodell)**

---



AI\_Metzgerei\_JE2



AI\_Metzgerei\_Wi\_JE2

**Vora-Shop**

*je2fr111.zip*

---

03.02.2019

**Schneepflug für meterspurige Zahnradbahnen (Freemodell)**

*Dem Set liegt ein passender Spline bei. Bitte die Anweisungen für die Verwendung in EEP 6 und älteren Versionen beachten!*

---



Schneepflug\_FF1\_1000mm



(Rückansicht)

**Vora-Shop**

*ff1fr023.zip*

---

02.02.2019

**Altstadtimpressionen (Set 49)**

---



AI\_Spital\_JE2



AI\_Spital\_Wi\_JE2

**Vora-Shop**

*JE200338.zip*

---

02.02.2019

**Altstadtimpressionen (Set 48)**

---



AI\_Haus\_110\_JE2



AI\_Haus\_110\_Wi\_JE2



AI\_Kirche109\_JE2



AI\_Kirche109\_Wi\_JE2

**Vora-Shop**

*JE200337.zip*

---

02.02.2019

**Anbau-Schneesleuder**

---



Schneesleuder\_FF1 (Immobilie)



Schneesleuder\_A\_FF1



Schneesleuder\_B\_FF1



LKW\_U401\_P\_var

**Vora-Shop**

*ff100110.zip*

---