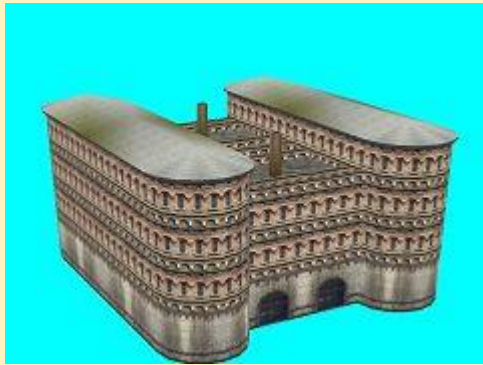
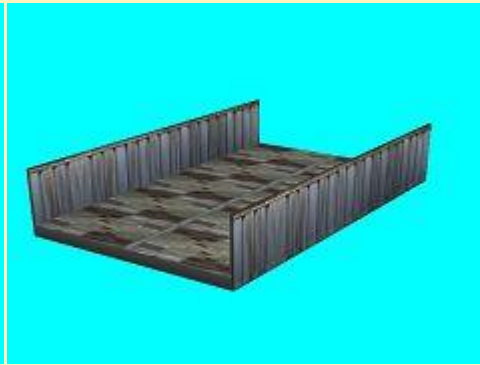


26.03.2019

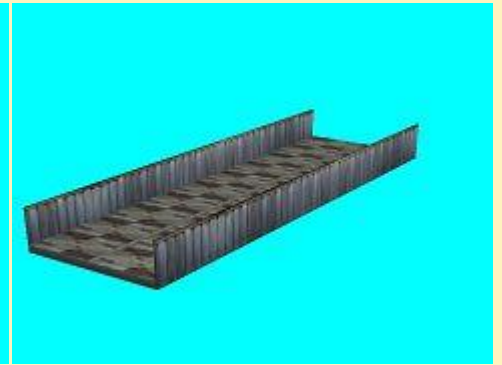
Altstadtimpressionen (Set 66, Bastion Bausatz)



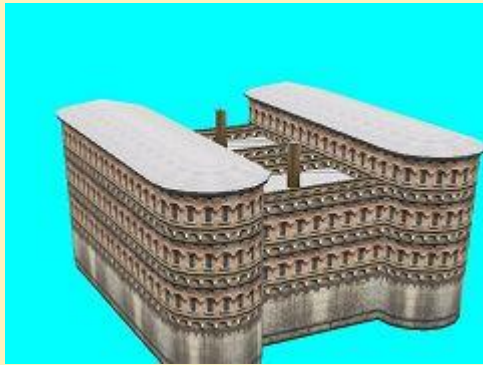
AI_Bastion_JE2



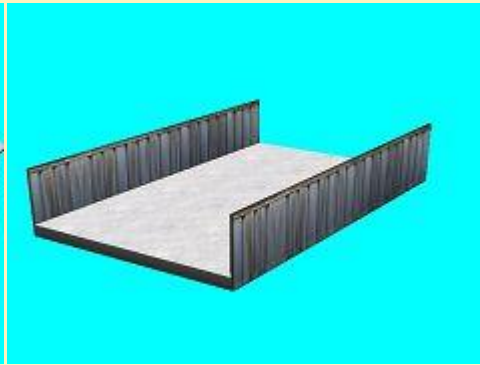
AI_Bastion_Steg_5m_JE2



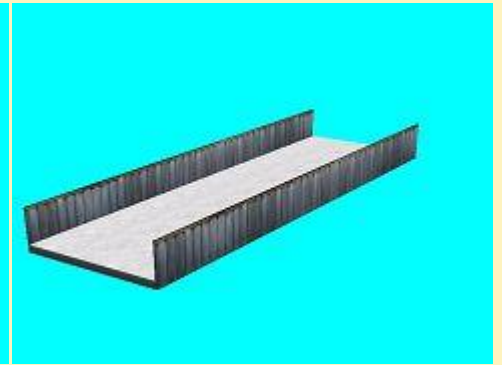
AI_Bastion_Steg_10m_JE2



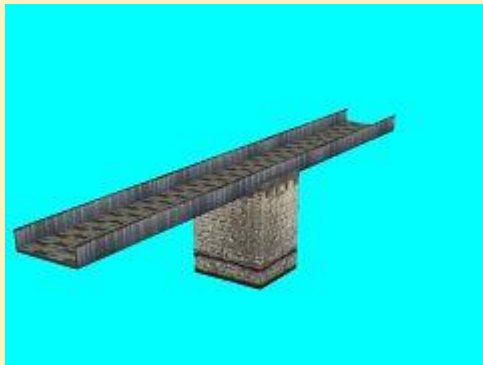
AI_Bastion_Wi_JE2



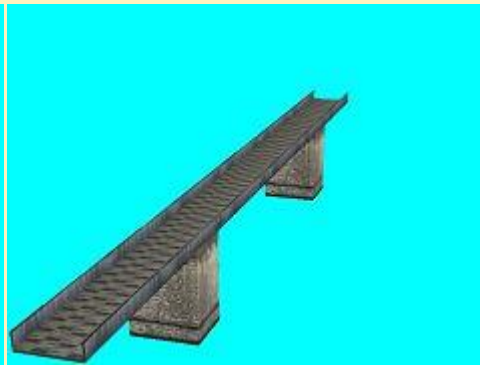
AI_Bastion_Steg_5m_Wi_JE2



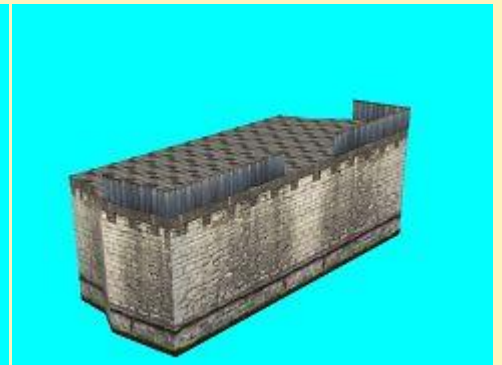
AI_Bastion_Steg_10m_Wi_JE2



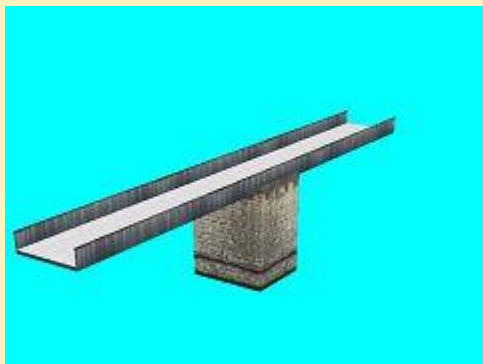
AI_Bastion_Steg_25m_JE2



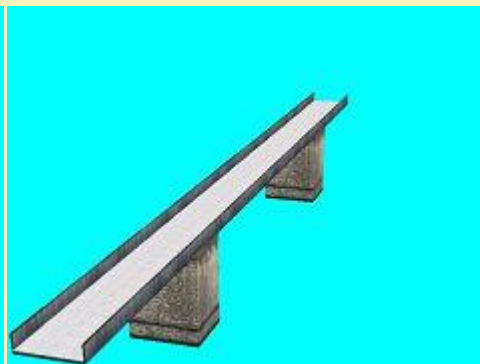
AI_Bastion_Steg_50m_JE2



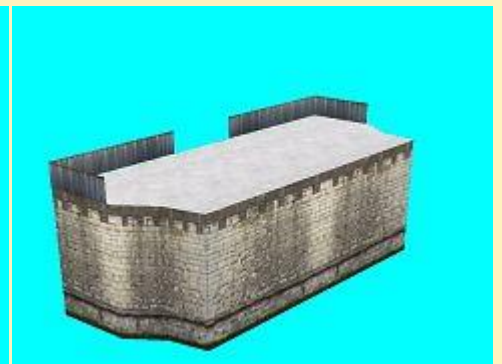
AI_Bastion_Steg_Opt_Ende_JE2



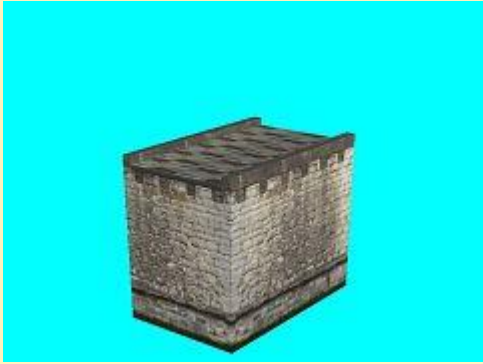
AI_Bastion_Steg_25m_Wi_JE2



AI_Bastion_Steg_50m_Wi_JE2



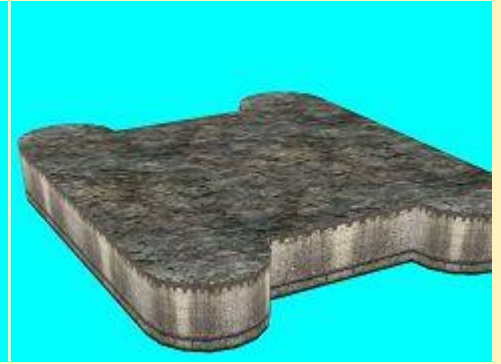
AI_Bastion_Steg_Opt_Ende_Wi_JE2



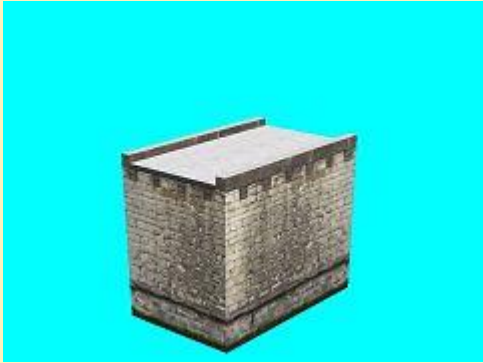
AI_Bastion_Steg_Start_JE2



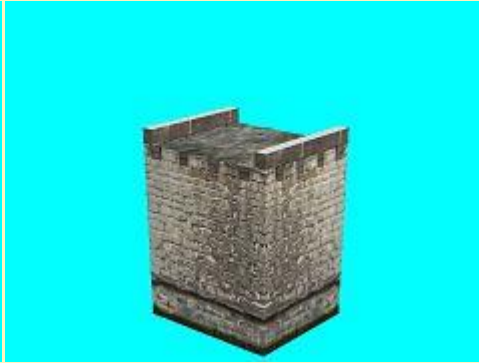
AI_Bastion_Stegpfeiler_JE2



AI_Bastion_Basis_JE2



AI_Bastion_Steg_Start_Wi_JE2



AI_Bastion_Stegpfeiler_Wi_JE2



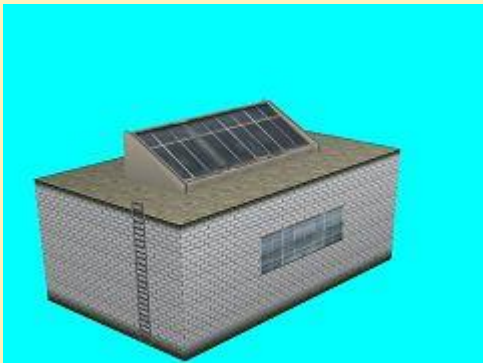
AI_Bastion_Stegpfeiler_Basis_JE2

Vora-Shop

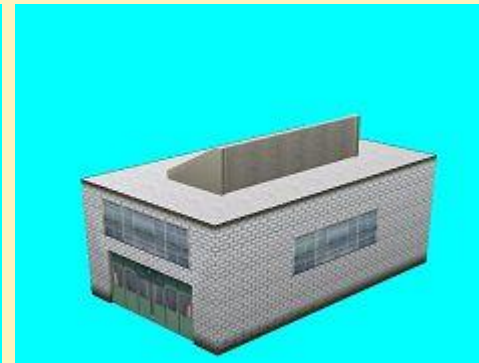
JE200362.zip

26.03.2019

Bausatz Kläranlage - Set 5



Klaeranlage_Anbauhalle_JE2



Klaeranlage_Anbauhalle_Wi_JE2



Klaeranlage_Buero_JE2



Klaeranlage_Buero_Wi_JE2



Klaeranlage_FG_Tank_JE2
(FG = Faulgas)



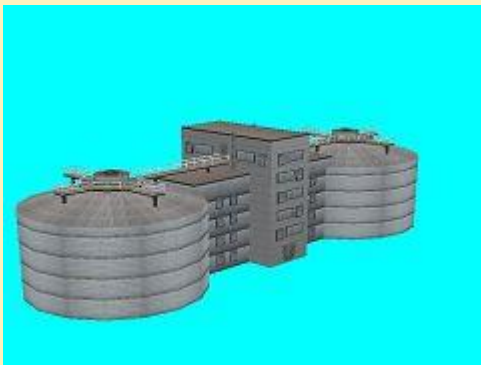
Klaeranlage_FG_Tank_Wi_JE2

Vora-Shop

JE200361.zip

18.03.2019

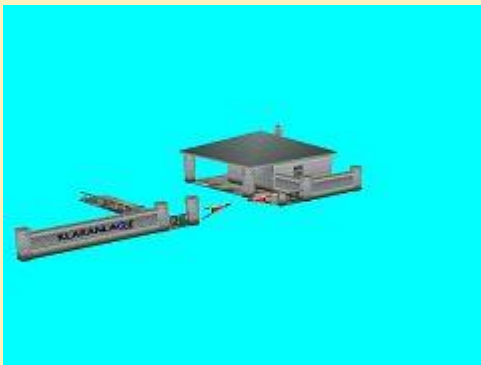
Bausatz Kläranlage - Set 4



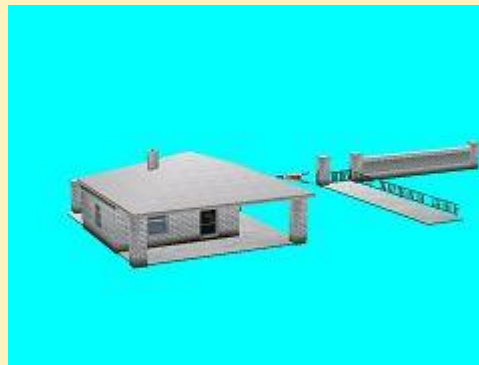
Faulturm_JE2



Faulturm_Wi_JE2



Klaeranlage_Pforte_JE2



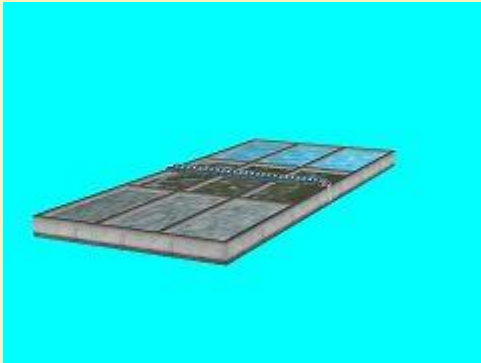
Klaeranlage_Pforte_Wi_JE2

Vora-Shop

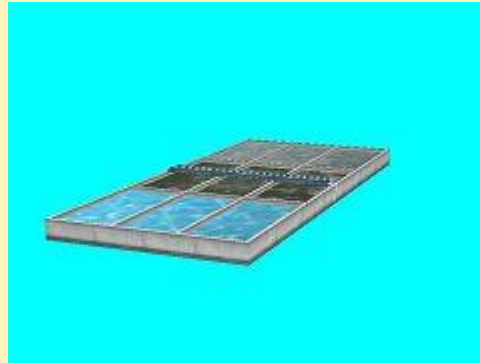
JE200360.zip

18.03.2019

Bausatz Kläranlage - Set 3



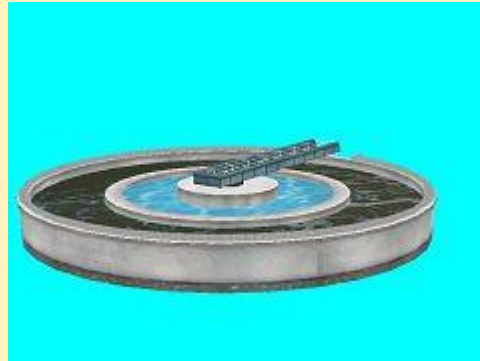
Klaerbecken_3_JE2



Klaerbecken_3_Wi_JE2



Klaerbecken_4_JE2



Klaerbecken_4_Wi_JE2

Vora-Shop

JE200359.zip

18.03.2019

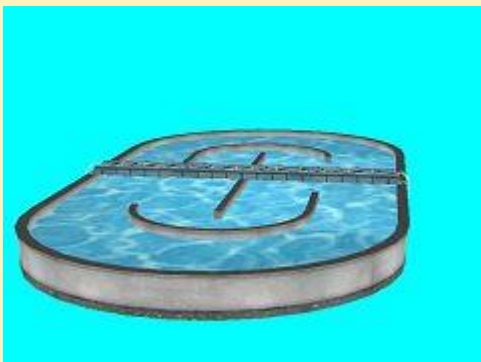
Bausatz Kläranlage - Set 2



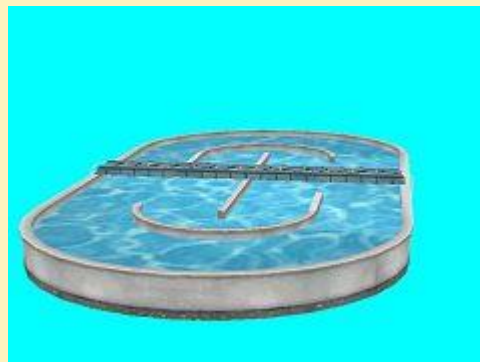
Klaerbecken_2_bubble_JE2



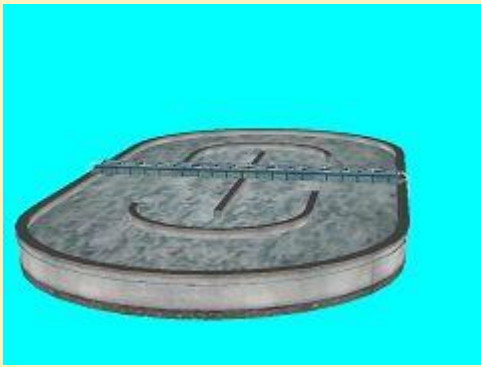
Klaerbecken_2_bubble_Wi_JE2



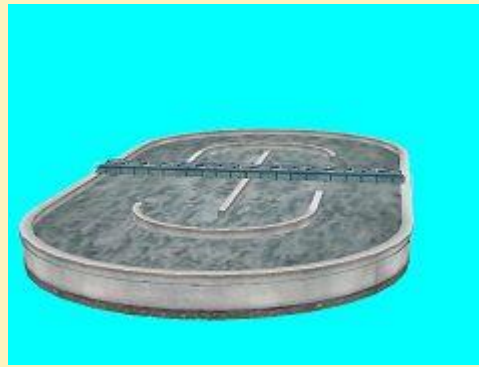
Klaerbecken_2_clean_JE2



Klaerbecken_2_clean_Wi_JE2



Klaerbecken_2_dirty_JE2



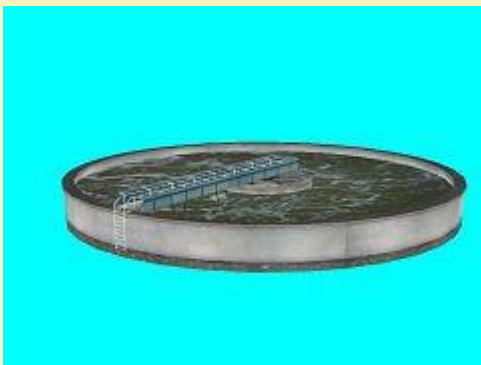
Klaerbecken_2_dirty_Wi_JE2

Vora-Shop

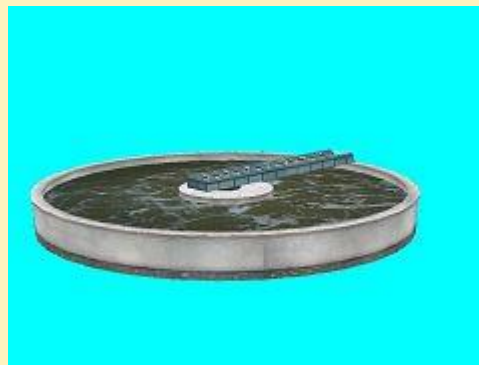
JE200358.zip

18.03.2019

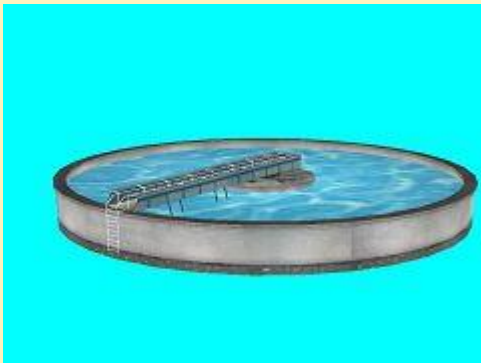
Bausatz Kläranlage - Set 1



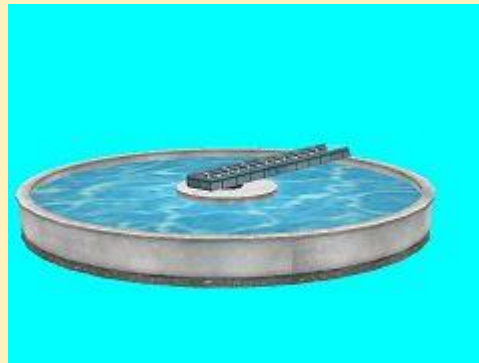
Klaerbecken_1_bubble_JE2



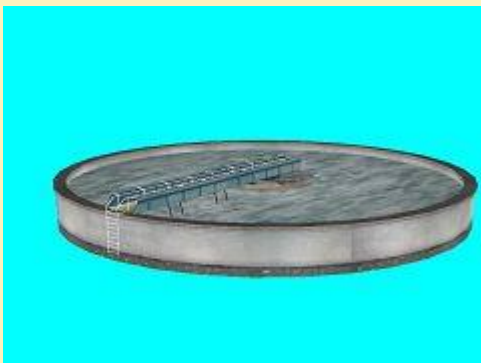
Klaerbecken_1_bubble_Wi_JE2



Klaerbecken_1_clean_JE2



Klaerbecken_1_clean_Wi_JE2



Klaerbecken_1_dirty_JE2



Klaerbecken_1_dirty_Wi_JE2



Klaerbecken_1_leer_JE2



Klaerbecken_1_leer_Wi_JE2

Vora-Shop

JE200357.zip

13.03.2019

Altstadtimpressionen (Set 65, Stadthaus Bausatz 12)



AI_Stadthaus106_Y_JE2



AI_Stadthaus106_Z_JE2



AI_Stadthaus106_Y_Wi_JE2



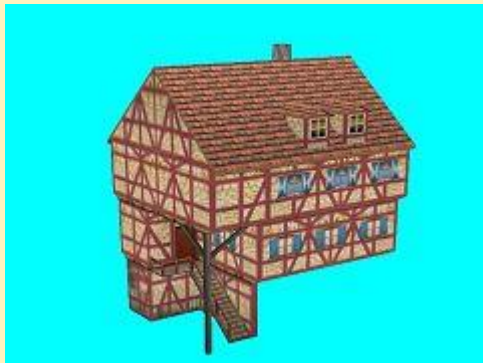
AI_Stadthaus106_Z_Wi_JE2

Vora-Shop

JE200356.zip

13.03.2019

Altstadtimpressionen (Set 64, Stadthaus Bausatz 11)



AI_Stadthaus106_J_JE2



AI_Stadthaus106_X_JE2



AI_Stadthaus106_J_Wi_JE2



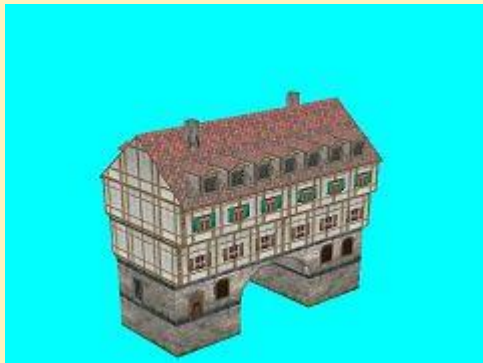
AI_Stadthaus106_X_Wi_JE2

Vora-Shop

JE200355.zip

08.03.2019

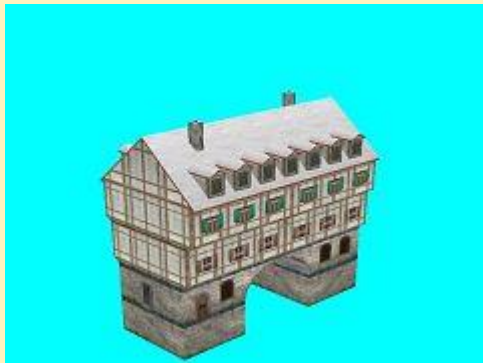
Altstadtimpressionen (Set 63, Stadthaus Bausatz 10)



AI_Stadthaus106_V_JE2



AI_Stadthaus106_W_JE2



AI_Stadthaus106_V_Wi_JE2



AI_Stadthaus106_W_Wi_JE2

Vora-Shop

JE200354.zip

08.03.2019

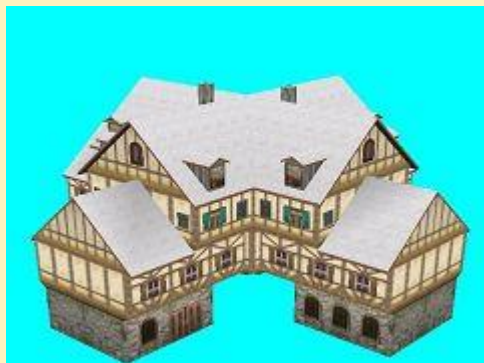
Altstadtimpressionen (Set 62, Stadthaus Bausatz 9)



AI_Stadthaus106_Kreuz_JE2



AI_Stadthaus106_U_JE2



AI_Stadthaus106_Kreuz_Wi_JE2



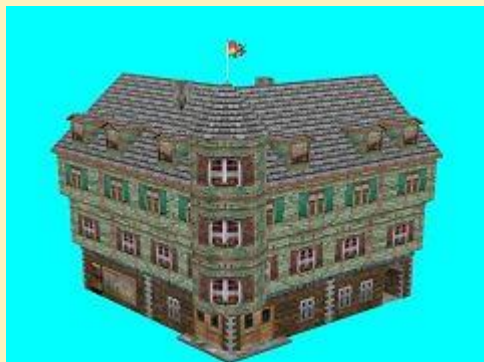
AI_Stadthaus106_U_Wi_JE2

Vora-Shop

JE200353.zip

05.03.2019

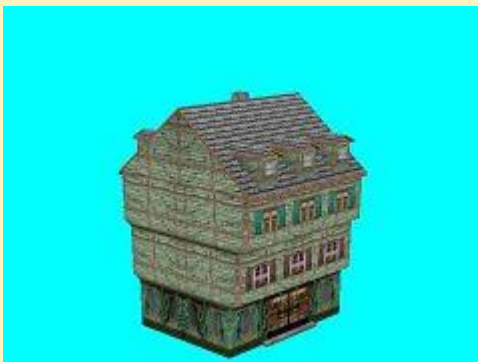
Altstadtimpressionen (Set 61, Stadthaus Bausatz 8)



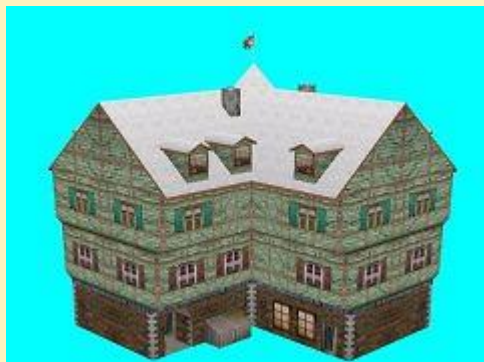
AI_Stadthaus106_Eck3_JE2



AI_Stadthaus106_S_JE2



AI_Stadthaus106_T_JE2



AI_Stadthaus106_Eck3_Wi_JE2



AI_Stadthaus106_S_Wi_JE2



AI_Stadthaus106_T_Wi_JE2

Vora-Shop

JE200352.zip

05.03.2019

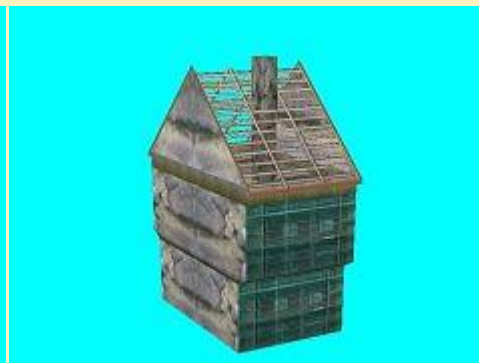
Altstadtimpressionen (Set 60, Stadthaus Bausatz 7)



AI_Stadthaus106_P_JE2



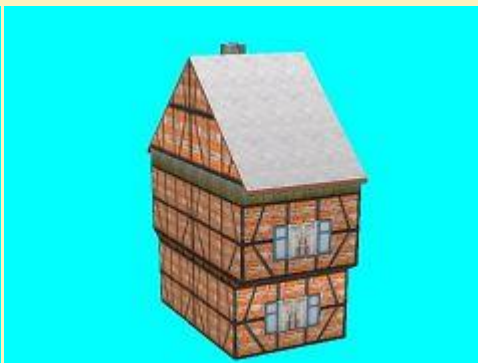
AI_Stadthaus106_Q_JE2



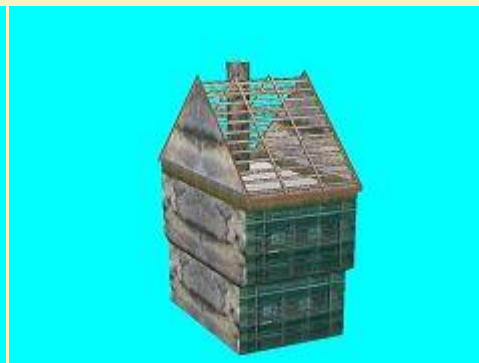
AI_Stadthaus106_R_JE2



AI_Stadthaus106_P_Wi_JE2



AI_Stadthaus106_Q_Wi_JE2



AI_Stadthaus106_R_Wi_JE2

Vora-Shop

JE200351.zip

05.03.2019

Containertragwagen Typ Sgnss Hupac Set 2



Hupac_Sgnss3-Lad01_DB1



Hupac_Sgnss3-Lad02_DB1



Hupac_Sgnss3-Lad03_DB1



Hupac_Sgnss3-Lad04_DB1



Hupac_Sgnss3-Lad05_DB1



Hupac_Sgnss3-Lad06_DB1



Hupac_Sgnss3-Lad07_DB1



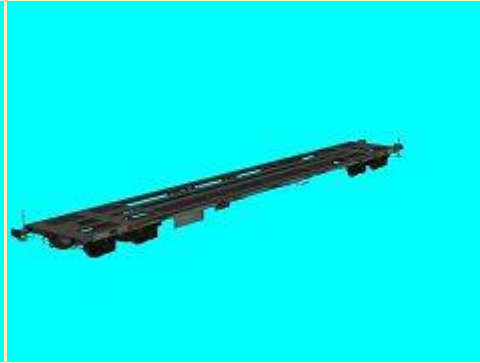
Hupac_Sgnss3-Lad08_DB1



Hupac_Sgnss3-Lad09_DB1



Hupac_Sgnss3-Lad10_DB1



Hupac_Sgnss3-leer_DB1

Vora-Shop
Trend-Shop

DB100350.zip
V60NDB10350.zip

05.03.2019

Containertragwagen Typ Sgnss Hupac Set 1



Hupac_Sgnss2-Lad01_DB1



Hupac_Sgnss2-Lad02_DB1



Hupac_Sgnss2-Lad03_DB1



Hupac_Sgnss2-Lad04_DB1



Hupac_Sgnss2-Lad05_DB1



Hupac_Sgnss2-Lad06_DB1



Hupac_Sgnss2-Lad07_DB1



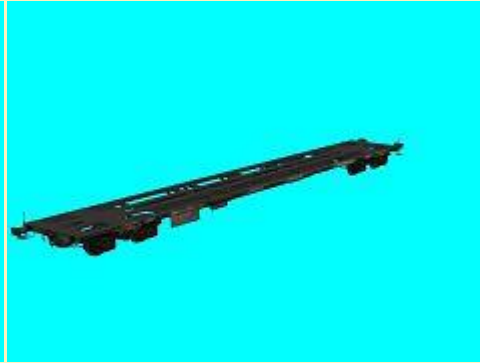
Hupac_Sgnss2-Lad08_DB1



Hupac_Sgnss2-Lad09_DB1



Hupac_Sgnss2-Lad10_DB1



Hupac_Sgnss2-leer_DB1

Vora-Shop
Trend-Shop

DB100349.zip
V60NDB10349.zip

05.03.2019

Containertragwagen Typ Sgns Hupac



Hupac_Sgns2-Lad01_DB1



Hupac_Sgns2-Lad02_DB1



Hupac_Sgns2-Lad03_DB1



Hupac_Sgns2-Lad04_DB1



Hupac_Sgns2-Lad05_DB1



Hupac_Sgns2-Lad06_DB1



Hupac_Sgns2-Lad07_DB1



Hupac_Sgns2-Lad08_DB1



Hupac_Sgns2-Lad09_DB1



Hupac_Sgns2-Lad10_DB1



Hupac_Sgns2-leer_DB1

Vora-Shop
Trend-Shop

DB100348.zip
V60NDB10348.zip

01.03.2019

diverse Bäume (Freemodelle)

Die Bäume wuchsen unter der Pflege des HomeNOS-Kon Karl-Heinz J.



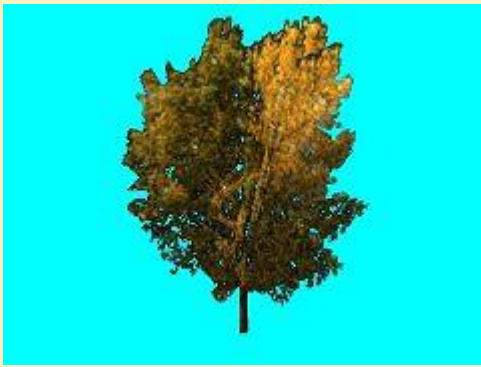
Baum_Neu1_6m

Baum_Neu1 in den Größen:
01m, 02m, 03m, 04m, 05m, 06m,
07m, 08m, 09m, 10m, 11m, 12m,
13m, 14m, 15m



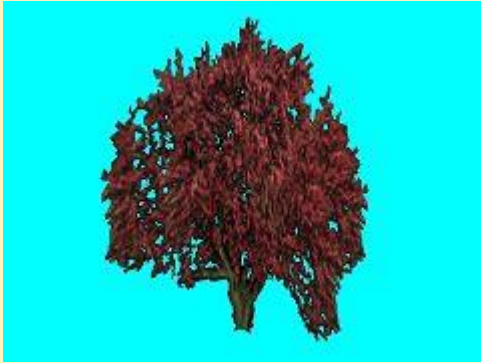
Baum_Neu2_6m

Baum_Neu2 in den Größen:
01m, 02m, 03m, 04m, 05m, 06m,
07m, 08m, 09m, 10m, 11m, 12m,
13m, 14m, 15m



Baum_Neu3 in den Größen:
01m, 02m, 03m, 04m, 05m, 06m,
07m, 08m, 09m, 10m, 11m, 12m,
13m, 14m, 15m

Baum_Neu3_6m



Baum_Neu4 in den Größen:
01m, 02m, 03m, 04m, 05m, 06m,
07m, 08m, 09m, 10m, 11m, 12m,
13m, 14m, 15m

Baum_Neu4_6m



Baum_Neu5 in den Größen:
01m, 02m, 03m, 04m, 05m, 06m,
07m, 08m, 09m, 10m, 11m, 12m,
13m, 14m, 15m

Baum_Neu5_6m



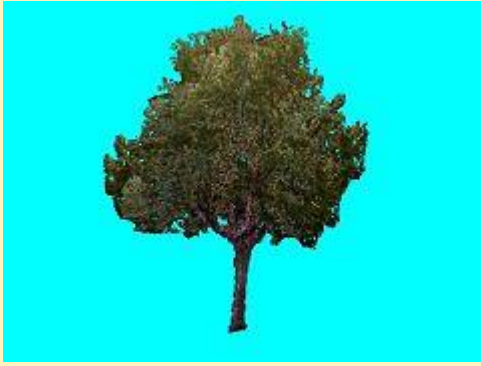
Baum_Neu6 in den Größen:
01m, 02m, 03m, 04m, 05m, 06m,
07m, 08m, 09m, 10m, 11m, 12m,
13m, 14m, 15m

Baum_Neu6_6m



Baum_Neu7 in den Größen:
01m, 02m, 03m, 04m, 05m, 06m,
07m, 08m, 09m, 10m, 11m, 12m,
13m, 14m, 15m

Baum_Neu7_6m



Baum_Neu8 in den Größen:
01m, 02m, 03m, 04m, 05m, 06m,
07m, 08m, 09m, 10m, 11m, 12m,
13m, 14m, 15m

Baum_Neu8_6m

Vora-Shop

vr1fr038.zip

01.03.2019

Altstadtimpressionen (Set 59, Stadthaus Bausatz 6)



AI_Stadthaus106_Kirche_JE2



AI_Stadthaus106_Kirche_Wi_JE2

Vora-Shop

JE200350.zip

01.03.2019

Altstadtimpressionen (Set 58, Stadthaus Bausatz 5)



AI_Stadthaus106_M_JE2



AI_Stadthaus106_N_JE2



AI_Stadthaus106_O_JE2



AI_Stadthaus106_M_Wi_JE2



AI_Stadthaus106_N_Wi_JE2



AI_Stadthaus106_O_Wi_JE2

Vora-Shop

JE200349.zip