

28.01.2020

Vierachsiger Containertragwagen Typ Sgnss Cemat



Cemat-Sgnss-Lad01_DB1



Cemat-Sgnss-Lad02_DB1



Cemat-Sgnss-Lad03_DB1



Cemat-Sgnss-Lad04_DB1



Cemat-Sgnss-Lad05_DB1



Cemat-Sgnss-Lad06_DB1



Cemat-Sgnss-Lad07_DB1



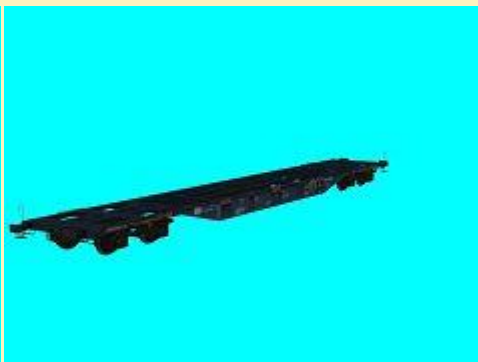
Cemat-Sgnss-Lad08_DB1



Cemat-Sgnss-Lad09_DB1



Cemat-Sgnss-Lad10_DB1



Cemat-Sgnss-leer_DB1

28.01.2020

Zweiteilige Taschentragswagen Typ Sdggmrss Mercitalia



Mercitalia_Sdggmrss-A-Lad01_DB1 Mercitalia_Sdggmrss-B-Lad01_DB1



Mercitalia_Sdggmrss-A-Lad02_DB1 Mercitalia_Sdggmrss-B-Lad02_DB1



Mercitalia_Sdggmrss-A-Lad03_DB1 Mercitalia_Sdggmrss-B-Lad03_DB1



Mercitalia_Sdggmrss-A-Lad04_DB1 Mercitalia_Sdggmrss-B-Lad04_DB1



Mercitalia_Sdggmrss-A-Lad05_DB1 Mercitalia_Sdggmrss-B-Lad05_DB1



Mercitalia_Sdggmrss-A-Lad06_DB1 Mercitalia_Sdggmrss-B-Lad06_DB1



Mercitalia_Sdggmrss-A-Lad07_DB1 Mercitalia_Sdggmrss-B-Lad07_DB1



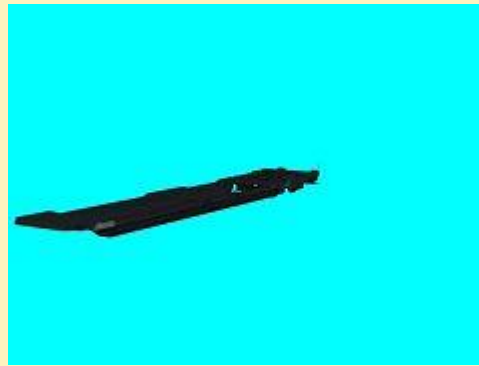
Mercitalia_Sdggmrss-A-Lad08_DB1 Mercitalia_Sdggmrss-B-Lad08_DB1



Mercitalia_Sdggmrss-A-Lad09_DB1 Mercitalia_Sdggmrss-B-Lad09_DB1



Mercitalia_Sdggmrss-A-Lad10_DB1 Mercitalia_Sdggmrss-B-Lad10_DB1



Mercitalia_Sdggmrss-A-leer_DB1 Mercitalia_Sdggmrss-B-leer_DB1

Vora-Shop
Trend-Shop

DB100402.zip
V60NDB10402.zip

15.01.2020
Stadthaus 21



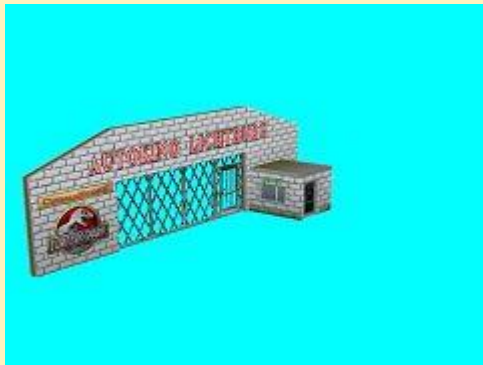
Stadthaus_21_JE2 Stadthaus_21_Wi_JE2

Vora-Shop

je200433.zip

10.01.2020

Autokino (Bausatz)



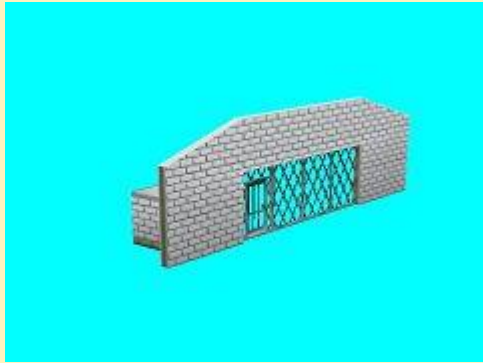
Autokino_Eingang_JE2



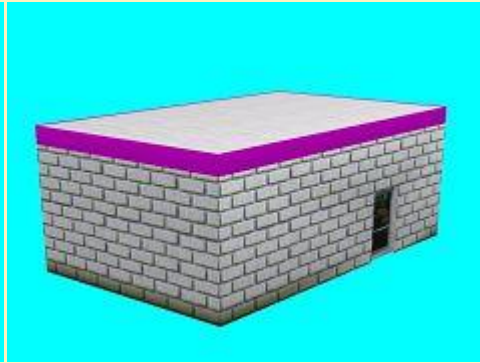
Autokino_Kiosk_JE2



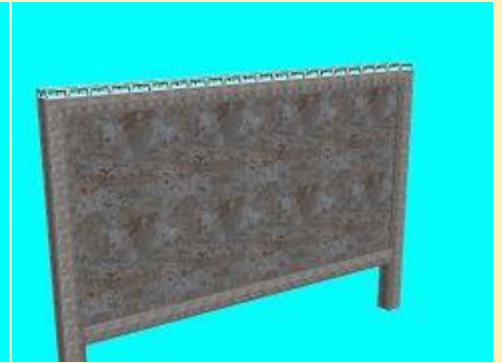
Autokino_Leinwand_JE2



Autokino_Eingang_Wi_JE2



Autokino_Kiosk_Wi_JE2



Autokino_Leinwand_Wi_JE2



Autokino_Verwaltung_JE2



Autokino_Zaun_2,5m_JE2



Autokino_Zaun_5m_JE2



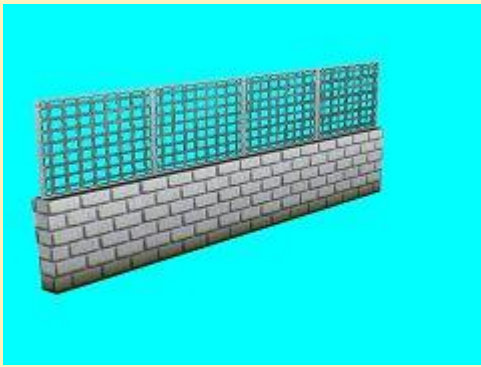
Autokino_Verwaltung_Wi_JE2



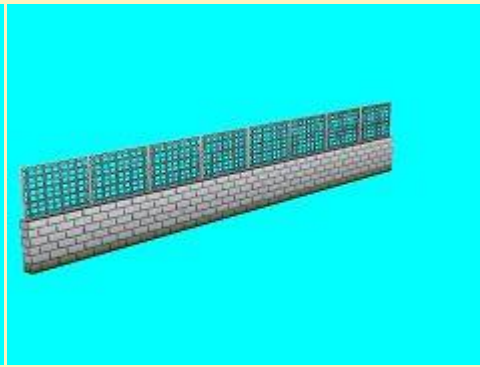
Autokino_Zaun_2,5m_Wi_JE2



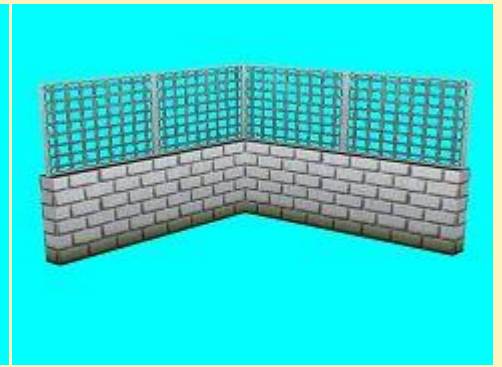
Autokino_Zaun_5m_Wi_JE2



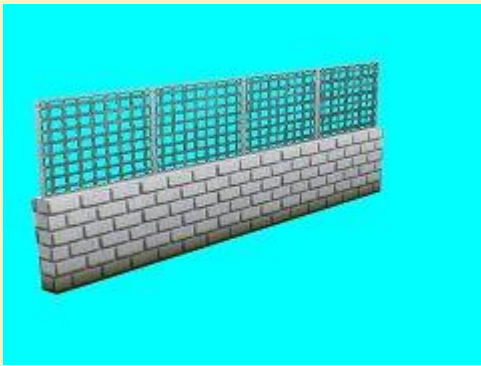
Autokino_Zaun_10m_JE2



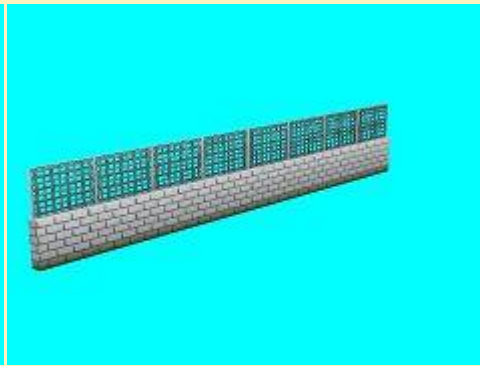
Autokino_Zaun_20m_JE2



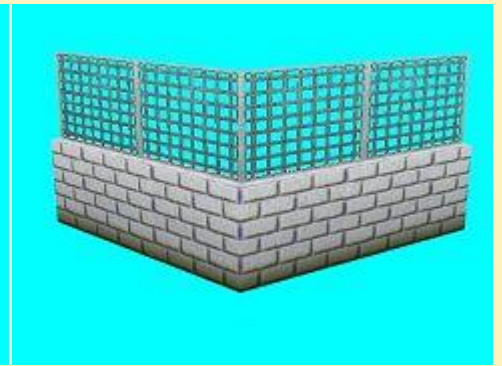
Autokino_Zaun_Eck_5x5m_JE2



Autokino_Zaun_10m_Wi_JE2



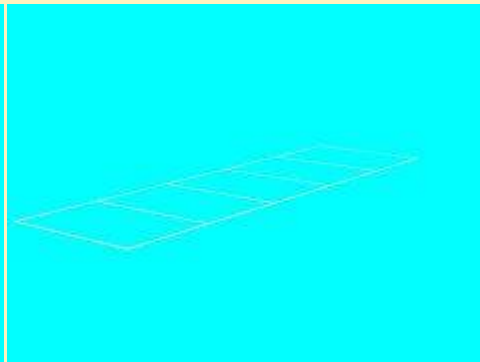
Autokino_Zaun_20m_Wi_JE2



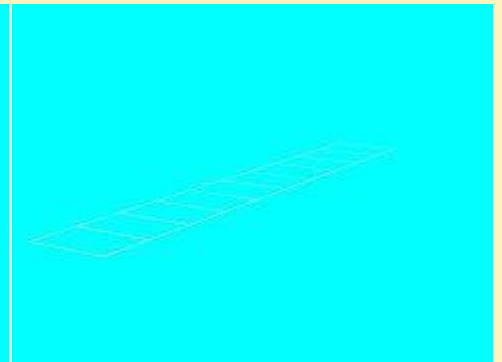
Autokino_Zaun_Eck_5x5m_Wi_JE2



Autokino_Zaunpfosten_JE2



Autokino_Standplaetze_5_JE2



Autokino_Standplaetze_10_JE2



Autokino_Zaunpfosten_Wi_JE2

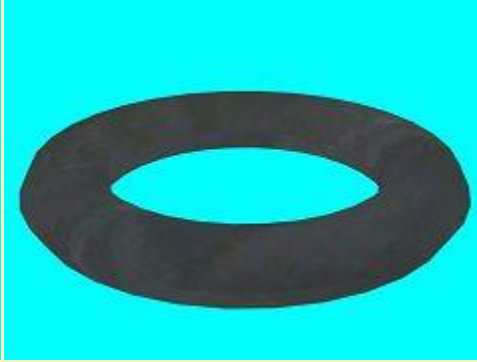
06.01.2017

Freemodelle zum "Hochneujahr" (Drei-Königs-Tag)

Das DUST Team (DU2):



Schwimmring1_Hippie_DU2



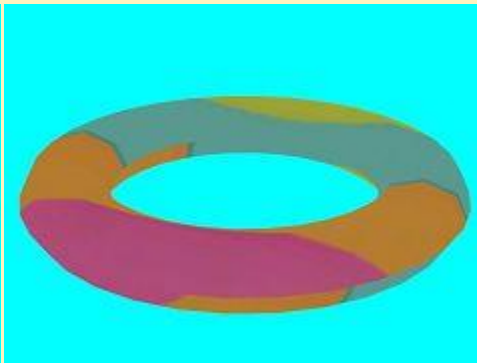
Schwimmring2_Lkw_Schlauch_DU2



Schwimmring3_Pneu_DU2



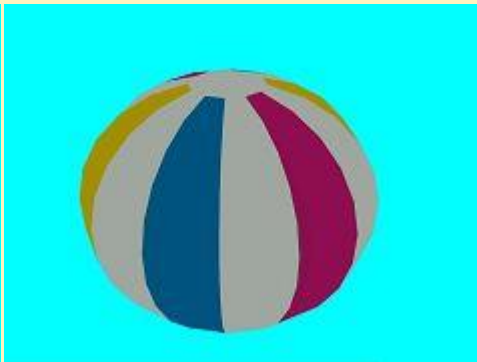
Schwimmring4_Donut_DU2



Schwimmring5_Bunt_DU2



Strandball1_Neon_DU2



Strandball2_4_Farben_DU2



Strandball3_Wassermelone_DU2



Strandball4_Schachbrett_DU2



Strandball5_Schwarz_Gold_DU2

Vora-Shop

neuh2020.zip

06.01.2020

Meissner-Mühle



Meissner_Muehle_JE2



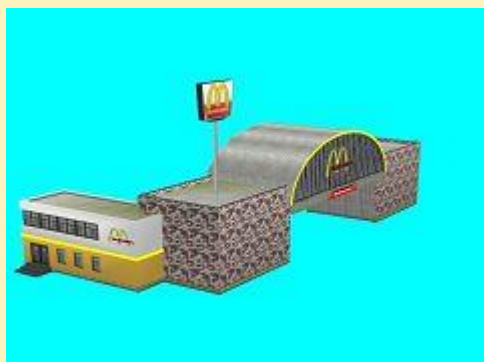
Meissner_Muehle_Wi_JE2

Vora-Shop

je200431.zip

06.01.2020

Entlang des High-Way (Set 15)



McDonalds_JE2



McDonalds_Wi_JE2

Vora-Shop

je200430.zip

03.01.2020

neue Exklusiv-Modelle für CD-Besteller

Paul Wessling (PW1):

Rollmaterial:



MB_L2_VORA_MI-594_Str_pw1



MB_L2_VORA_MI-617_Str_pw1



MB_L2_VORA_MI-659_Str_pw1



MB_L2_VORA_MI-937_Str_pw1

Immobilien:



MB_L2_VORA_MI-594_Im_pw1



MB_L2_VORA_PI1_MI-617_Im_pw1



MB_L2_VORA_MI-659_Im_pw1



MB_L2_VORA_PI2_MI-937_Im_pw1

Vora-Shop

bei CD-Bestellung

03.01.2020
Gästehaus 11



Gaestehaus_11_JE2



Gaestehaus_11_Wi_JE2

Vora-Shop

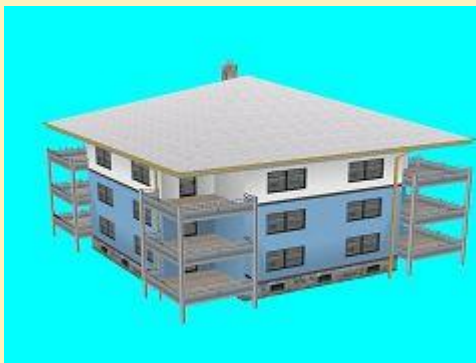
je200429.zip

03.01.2020

Set "Stadtvilla 11"



Stadtvilla_11_Blau_JE2



Stadtvilla_11_Blau_Wi_JE2



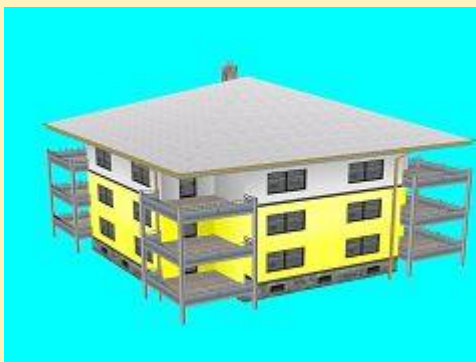
Stadtvilla_11_Braun_JE2



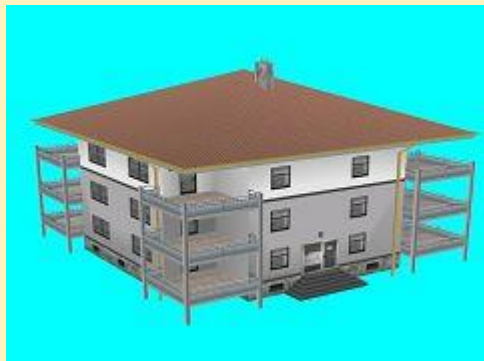
Stadtvilla_11_Braun_Wi_JE2



Stadtvilla_11_Gelb_JE2



Stadtvilla_11_Gelb_Wi_JE2



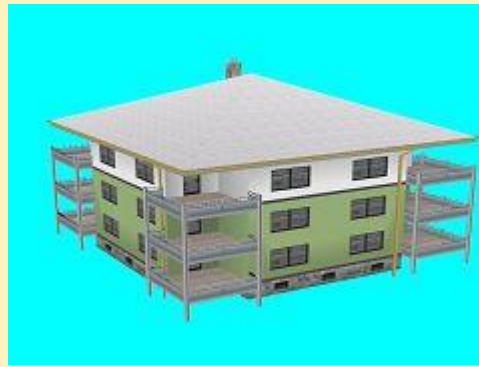
Stadtvilla_11_Grau_JE2



Stadtvilla_11_Grau_Wi_JE2



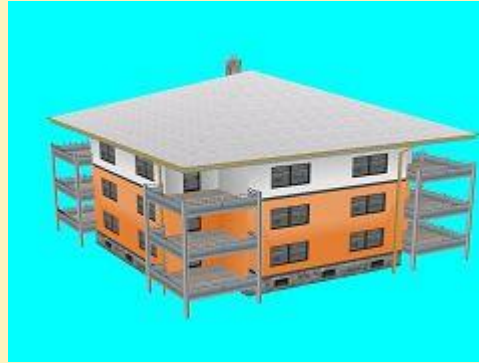
Stadtvilla_11_Gruen_JE2



Stadtvilla_11_Gruen_Wi_JE2



Stadtvilla_11_Orange_JE2



Stadtvilla_11_Orange_Wi_JE2



Stadtvilla_11_Rot_JE2



Stadtvilla_11_Rot_Wi_JE2

Vora-Shop

je200428.zip

01.01.2020

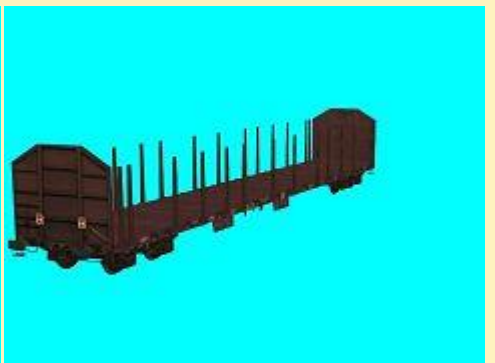
Freemodelle zu Neujahr von Dennis Bock (DB1)



CD_Roos-t639_Holz1_DB1



CD_Roos-t639_Holz2_DB1



CD_Roos-t639_leer_DB1

DB 1

Neujahr2020-CD-Cargo-Roos.zip

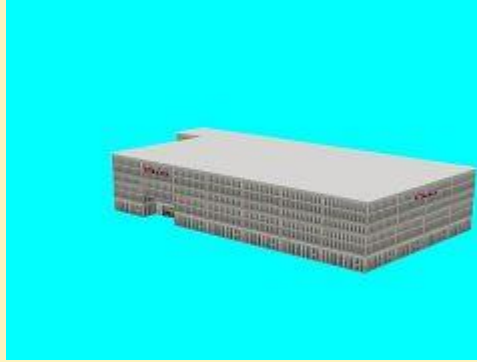
01.01.2020

Freemodelle zu Neujahr bei vora

Jürgen Einsiedler (JE2):



Hotel_Ramada_JE2



Hotel_Ramada_Wi_JE2

(JE2FR131)

Paul Wessling (PW1):



MB_L2_Weingut_IZ1428_Str_pw1



MB_L2_Weingut_IZ1428_Im_pw1

(PW1Neuj20)

Volkhard Ramsentaler (VR1) und Theo S.:



Splinepaket2.

Die Splines sind aufgrund der hohen ID-Nummer nur für EEP 6.1 (classic) verwendbar!

Enthalten sind:

- 4969_TS_Weidezaun-4x
- 4970_TS_Bruecken-Gelaender
- 4971_TS_Holzzaun-2

4972_TS_Holzzaun-1

4973_TS_Radweg

4974_TS_Rasengitter-Strasse-links

4975_TS_Rasengitter-Strasse-rechts

4976_TS_Rasengitter-Strasse

4977_TS_Leitplanke-schmal

4978_TS_Leitplanke-breit-Steg

4979_TS_Leitplanke-Schnee

(Splinepaket2)

Vora-Shop

neuj2020.zip