

25.10.2022

**US-Postamt**

---



US\_Post\_Office\_JE2\_JE2



US\_Post\_Office\_Wi\_JE2

**Vora-Shop**

*je200711.zip*

---

25.10.2022

**US-Bibliothek**

---



US\_Library\_JE2\_JE2



US\_Library\_Wi\_JE2

**Vora-Shop**

*je200710.zip*

---

21.10.2022

**Postgebäude mit Sendeturm (Bausatz)**

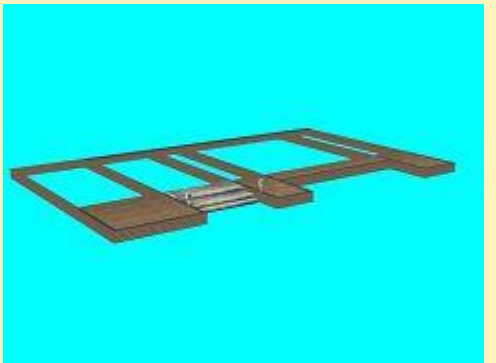
---



Post\_11\_JE2



Post\_11\_Sendeturm\_JE2



Post\_11\_Sockel\_JE2

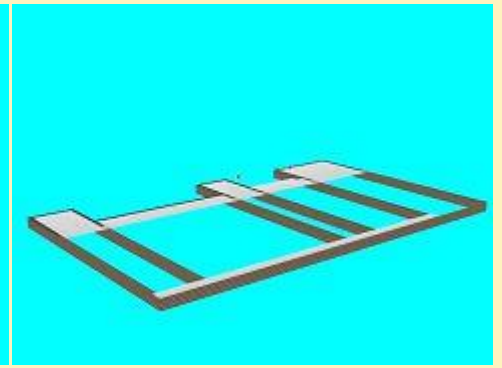
---



Post\_11\_Wi\_JE2



Post\_11\_Sendeturm\_Wi\_JE2



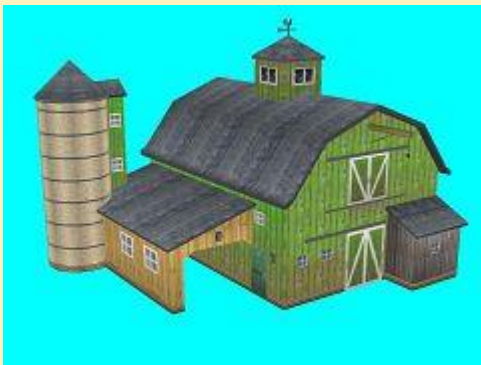
Post\_11\_Sockel\_Wi\_JE2

**Vora-Shop**

*je200709.zip*

21.10.2022

**US-Scheune 11**



US\_Scheune\_11\_JE2



US\_Scheune\_11\_Wi\_JE2

**Vora-Shop**

*je200708.zip*

15.10.2022

**US-PaketSERVICE**



US\_Paketversand\_JE2



US\_Paketversand\_Wi\_JE2

**Vora-Shop**

*je200707.zip*

15.10.2022

**Leuchtturm im Meer**

---



Leuchtturm\_im\_Meer\_JE2



Leuchtturm\_im\_Meer\_Wi\_JE2

**Vora-Shop**

*je200706.zip*

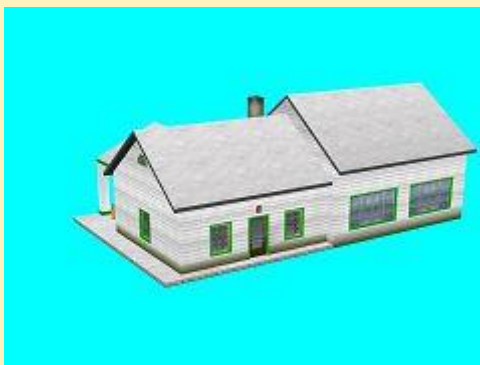
11.10.2022

**Entlang des High Way (Set 18)**

---



US\_Tankstelle\_01\_JE2



US\_Tankstelle\_01\_Wi\_JE2

**Vora-Shop**

*je200705.zip*

11.10.2022

**Entlang des High Way (Set 17)**

---



Cafe\_Aristo\_JE2



Cafe\_Aristo\_Wi\_JE2

**Vora-Shop**

*je200704.zip*

07.10.2022

**Planenwagen Typ Shimmns-tu 720 der DBAG und der NACCO (Set 1)**



DBAG\_Shimmns-tu-720-1\_DB1



DBAG\_Shimmns-tu-720-2\_DB1



DBAG\_Shimmns-tu-720-3\_DB1



DBAG\_Shimmns-tu-720-4\_DB1



Nacco\_Shimmns-tu-720-1\_DB1



Nacco\_Shimmns-tu-720-2\_DB1

**Vora-Shop**  
**Trend-Shop**

*db100487.zip*  
*V60NDB10487.zip*

07.10.2022

**Planenwagen Typ Shimmns-ttu 722 der DBAG (Set 1)**



DBAG\_Shimmns-ttu-722-1\_DB1



DBAG\_Shimmns-ttu-722-2\_DB1



DBAG\_Shimmns-ttu-722-3\_DB1



DBAG\_Shimmns-ttu-722-4\_DB1



DBAG\_Shimmns-ttu-722-5\_DB1



DBAG\_Shimmns-ttu-722-6\_DB1

Vora-Shop  
Trend-Shop

db100486.zip  
V60NDB10486.zip

06.10.2022

**S(-Bahn)-Säulen (Freemodelle)**

Ergänzend zum Set "PW1\_F039\_U\_Bahn\_Schilder".



S\_Saeule\_Klinker\_pw1



S\_Saeule\_Stahl-1\_pw1

Die ger - freie Modelle

S-Sauele-PW1.rar

05.10.2022

**Warnbaken Ep. V (Freemodelle)**



Warnbake-Pfeil\_Licht-1\_BH1



Warnbake-Pfeil\_Licht-2\_BH1



Warnbake-Pfeil\_Licht-aus\_BH1



Warnbake-Schraffen\_Licht-1\_BH1

Warnbake-Schraffen\_Licht-2\_BH1

Warnbake-Schraffen\_Licht-aus\_BH1



Warnbake-Pfeil\_ohne\_BH1

Warnbake-Schraffen\_ohne\_BH1

**FKG**

*BH1\_Warnbaken.rar*

05.10.2022

**Jagdhochhaus 10**



Jagdhochhaus\_10\_JE2

Jagdhochhaus\_10\_Wi\_JE2

**Vora-Shop**

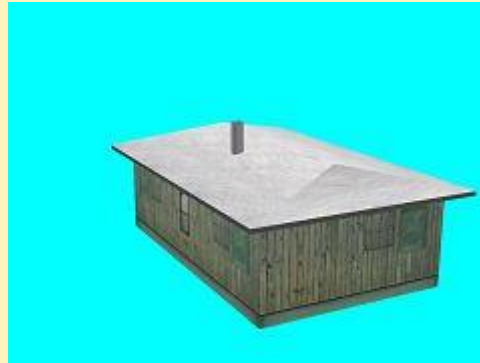
*je200703.zip*

05.10.2022  
Jagdhütte 10

---



Jagdhuetten\_10\_JE2



Jagdhuetten\_10\_Wi\_JE2

**Vora-Shop**

*je200702.zip*

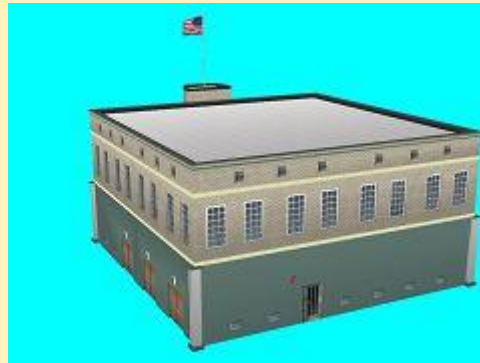
---

05.10.2022  
US-Kino 05

---



US\_Kino\_05\_JE2



US\_Kino\_05\_Wi\_JE2

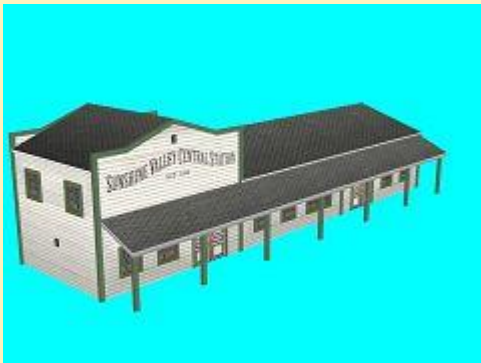
**Vora-Shop**

*je200701.zip*

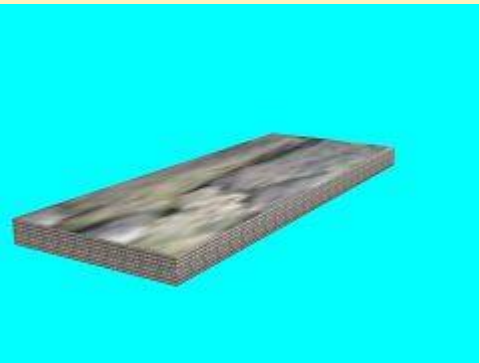
---

05.10.2022  
US-Bahnhof 01

---



US\_Bhf\_01\_JE2



Platte\_US\_Bhf\_01\_JE2



Treppe\_US\_Bhf\_01\_JE2

---



US\_Bhf\_01\_Wi\_JE2



Platte\_US\_Bhf\_01\_Wi\_JE2



Treppe\_US\_Bhf\_01\_Wi\_JE2

**Vora-Shop**

*je200700.zip*

03.10.2022

**V10-199-008-4\_Press (Freemodell)**

für den 750er Schmalspurbereich der Pressnitzalbahn



V10-199-008-4\_Press

**Vora-Shop**

*vr1fr049.zip*